

an exhibition of architecture and sculpture produced during the last 50 years

nek chand's rock garden



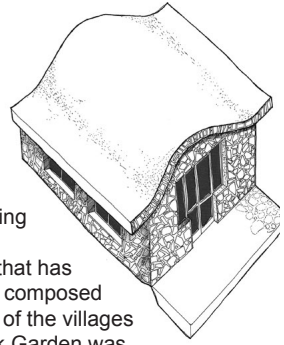
The RENEW Rooms: 82 Wood Street, Liverpool, L1 4DQ, UK. 10am - 4pm 7 days. Monday 16th April - Friday 11th May 2007



Arts & Humanities
Research Council



nek chand's rock garden



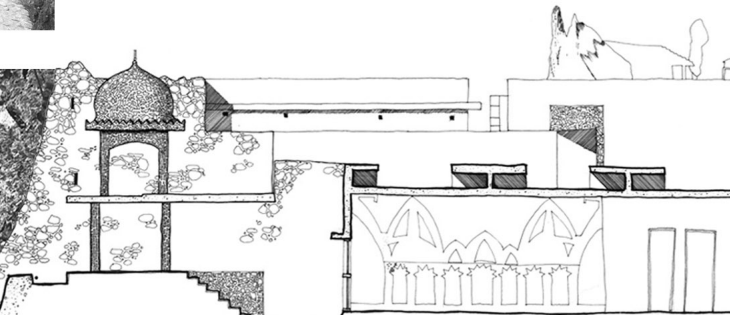
The city of Chandigarh, as well as being planned by Le Corbusier is home to 'The Rock Garden', a sculpture park that has emerged out of the city's detritus and composed partially from the gathered fragments of the villages that once occupied the site. The Rock Garden was built by Nek Chand, a self-taught artist. It has been under construction since 1958, initially illegally, as it occupies government land set aside as part of the city's greenbelt. The garden now contains over 3000 sculptures and an array of architectural works set within 18 acres of landscaped gardens. The garden initially began as a collection of stones arranged in a forest clearing adjacent to the stores where Nek Chand worked as a road inspector. He continued to gather other man-made objects that he used as sculpting materials and in particular used broken ceramics and glass bangles, as well as found stones, electrical components and glassware. He worked for fourteen years, in secret, before the authorities eventually discovered his garden. According to Chandigarh's strict planning rules the garden should have been immediately demolished, however following public support the garden was finally made legal in 1976.

Nek Chand was released from his employment as a city road inspector and was given a salary as well as a workforce to enable him to complete his vision. He is now eighty-two and still works on the garden daily.

This exhibition is the product of three years research, spent carefully recording, cataloguing and surveying the contents of the garden that were previously unknown.

The exhibition contains architectural drawings of the garden - a world first, as well as various photographic studies, a short film and "QuickTime Virtual Reality models" of the site.

Several smaller sculptures produced by Nek Chand and his team, will also be on display along side various artefacts that help to explain the garden's development.



A full exhibition catalogue is available. For catalogue and other information please contact Iain Jackson ijackson@liv.ac.uk or www.nekchand.info

