

## Special Thanks To The Volunteer Team For Making This All Possible

Sandy Brittion (Studio Lead)

Yunyi Wan

Shiran Xiao

Junzhe Zhang

Anastasia Smith

Emily Walker

Carla Fry

Ella Mead

Simran Dudhrah

Byan Ali M Basahey

Alfed Campion

Nathaniel Iglesias

William Peers

Fred Snell

Gage Egan

Class of 2023-24

# STUDIO PEN & INC

## ARCH 352 STUDENT PROJECT MODELS



UNIVERSITY OF  
LIVERPOOL

School of  
the Arts



Knowsley  
Council

Booklet Created By Nathaniel Iglesias

Nathanieliglesias24@outlook.com - @intheprcxs



# Studio Pen&Inc

This studio explores, through live collaboration, balances to be found between social, economic and environmental sustainability to create vibrant, happy, places to live and love.  
"It is impossible to build a better world if one cannot first imagine it." Lesley Lokko



Last day of studio (photograph by Martin Winchester)

### Overview

Passenger train travel, a revolutionary creation in mass mobility, began 200 hundred years ago, between stations of the Liverpool Manchester Railway. In 2030 operating train stations along this route will celebrate this bicentenary. Huyton Village will, we propose, host a series of events throughout the year, beginning and culminating via an Exhibition/ Carnival hub at its historic station. The Carnival will process its High Street from Tip to Top igniting community celebration and creative industry – *looking back at history to look forward to a fresh future.* Our pair of projects start and end this route.

In sememster one a demountable Carnival incubator hub is envisaged at its TIP, Huyton Station Gateway, followed in semester two by a Creative Culture hub at its TOP repurposing empty shop units to celebrate and serve its local community and reanimate the High Street spine . 2023 2024 scenarios are the third pair of Studio projects which collaborate with local stakeholders to critically think on the High Street renewal of Huyton. Walk the Plank and One Day Regeneration are guest project collaborators alongside partners; Knowsley Metropolitan Borough Council, Architectural Emporium and research group UFSS

### Students

- Samirah Ahmed

Byan Basahey

Jingxue Cao

Alfred Champion

Wenxin Dai

Xiaotong Dai

Pengjia Dai

Simran Dudhras

Harrison Farrar

Carla Fry

Sam Glossop

Nathaniel Iglesias

Sherry Ingham
- Kasey John

Haoyu Li

Yanxiao Liu

Jamie Malavi

Ella Mead

Situ Musokotwane

William Peers

Wenxin Qin

Xintong Shi

Ana Smith

Fred Snell

Theodora Townsend
- Emily Walker

Yunyi Wan

Yirong Wang

Xinyi Wen

Shiran Xiao

Yitong Xie

Yihan Yang

Yueqian Yang

Zhongqi Ye

Ziyu Zhang

Junzhe Zhang

Xin Zheng

### Tutors

- Sandy Britton

Sarah Green

Tony Lees

Simon Cadle

Sian Atherton

Jack Dunne

### Collaborators

- James Duncan (KMBC)

Mark Bingley (KMBC)

Fei Chen (LSA)

Luke Cooper (Architectural Emporium)

### Special Thanks

- Liz Pugh (Walk the Plank)

Chloe Clarke (One Day)

Matt Bell (One Day)

Giles Wheeldon (Ian Chalk Architects)

Rachel James (FCBSTudios)

Ardi Rexhepi (Ford Rexhepi)

Dave Gilkes ( DK Architects)

Mia Tagg (Make CIC )

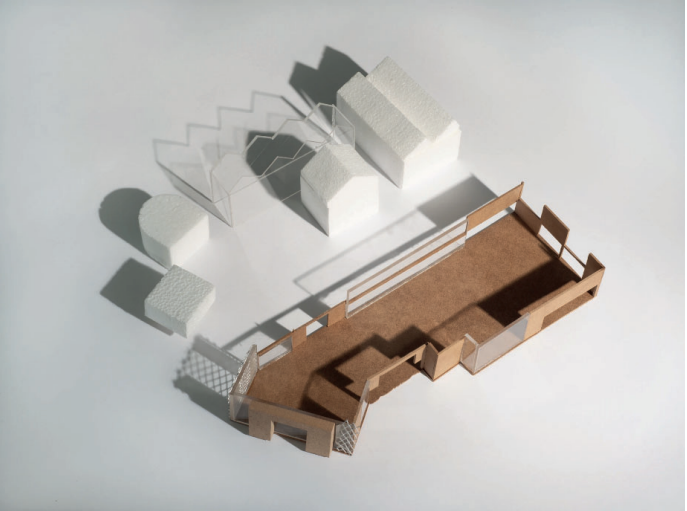
Leon Patel (Global Grooves)

Sophie Percival (Studio SP)
- Luca Csepely Knorr (LSA)

Junjie Xie (LSA)

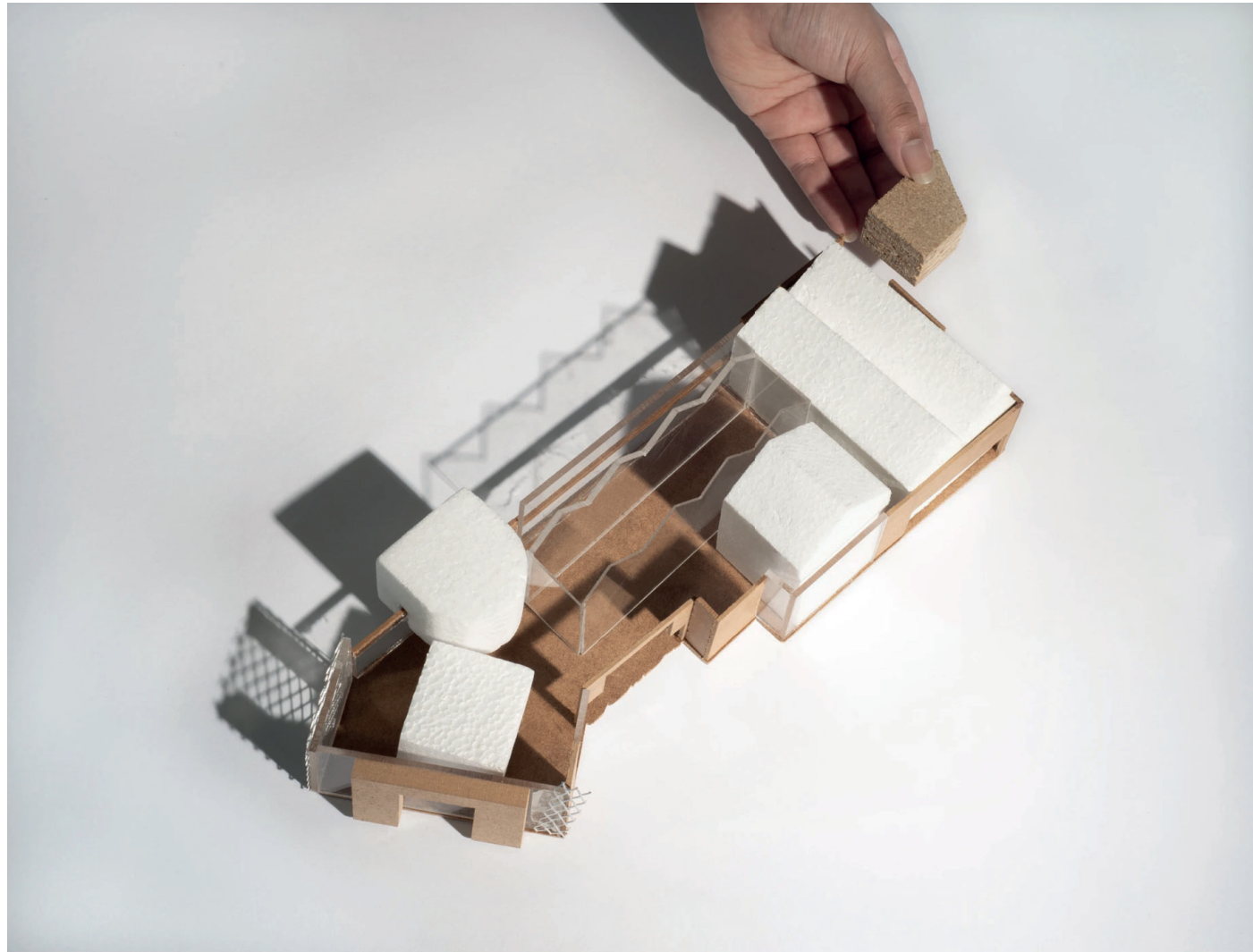
Carlos Medel Vera (LSA)

Stuart Gee (LSA)



Shot by Libre Studio @librestudioliverpool

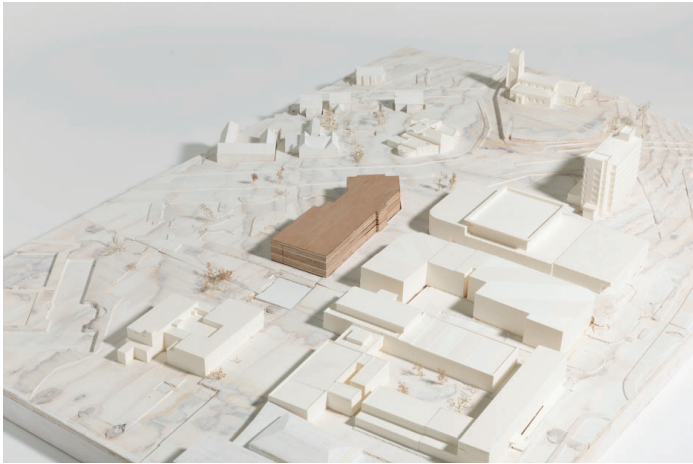




Roots

Simran Dudhrah Final Model

Huyton Village 1:200 Site Model



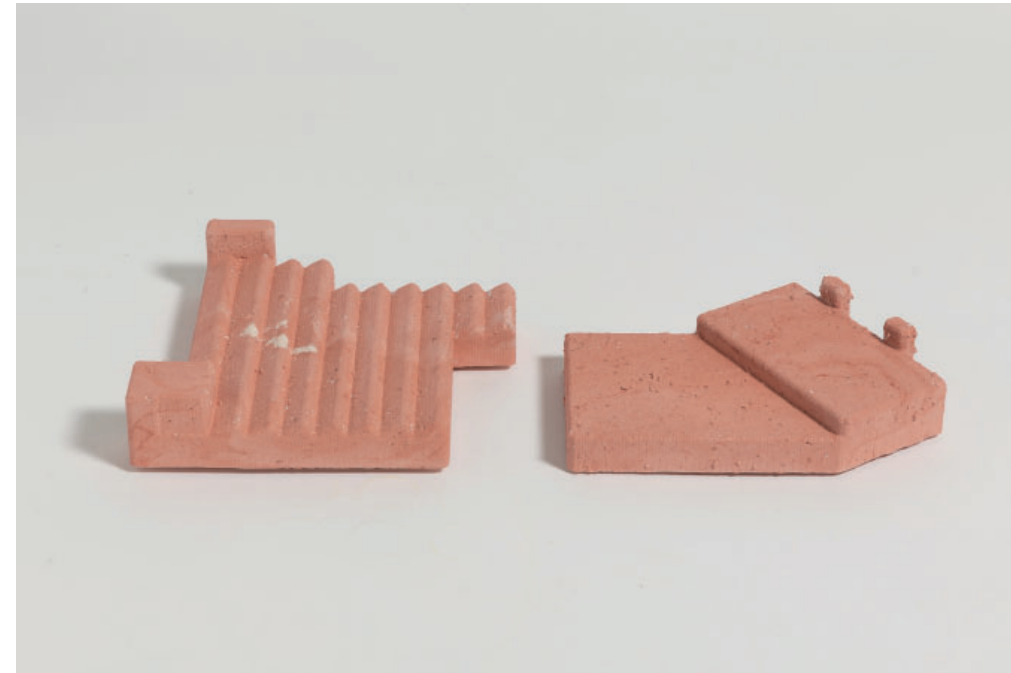
All photos taken by Sophie Percival  
[www.percival.studio](http://www.percival.studio)  
 @studio.s.p



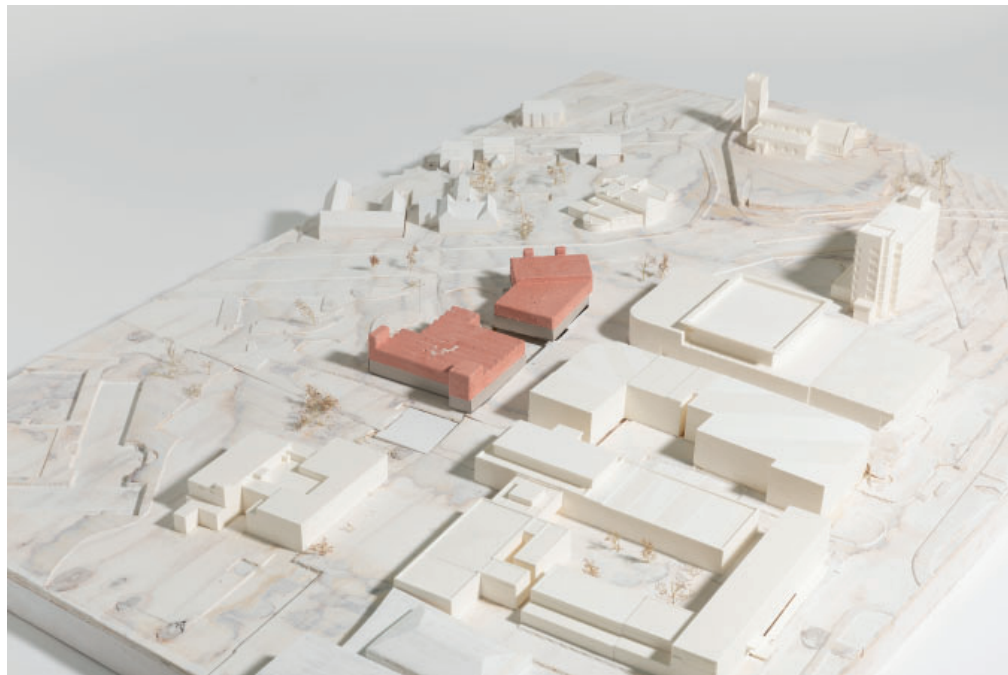


The Revive Workshop

Wenxin Dai Final Model



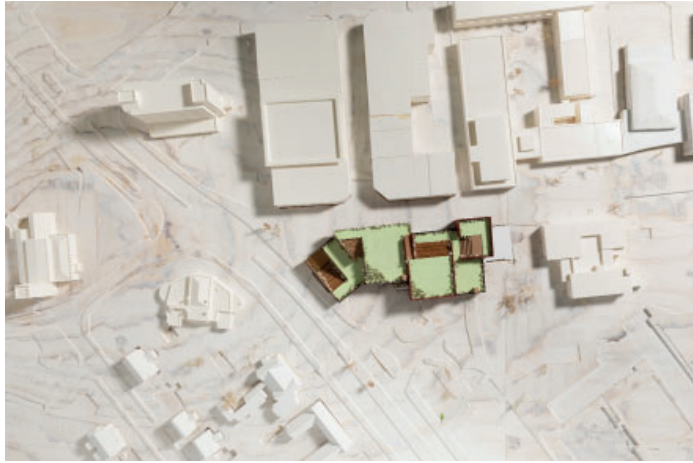




Huyton Bakehouse  
William Peers Final Model







Growing In Green

Shiran Xiao Final Model







Milling Tower Movement Model 1:50

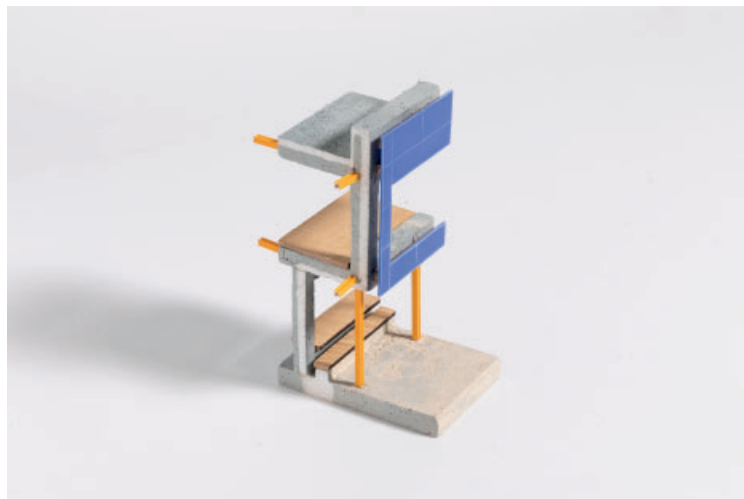
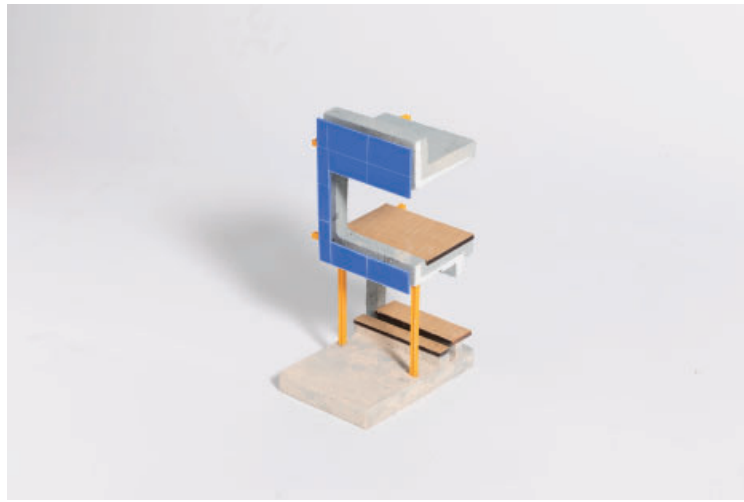
William Peers



The Kitchen Collective

Fred Snell Final Model





Section Model

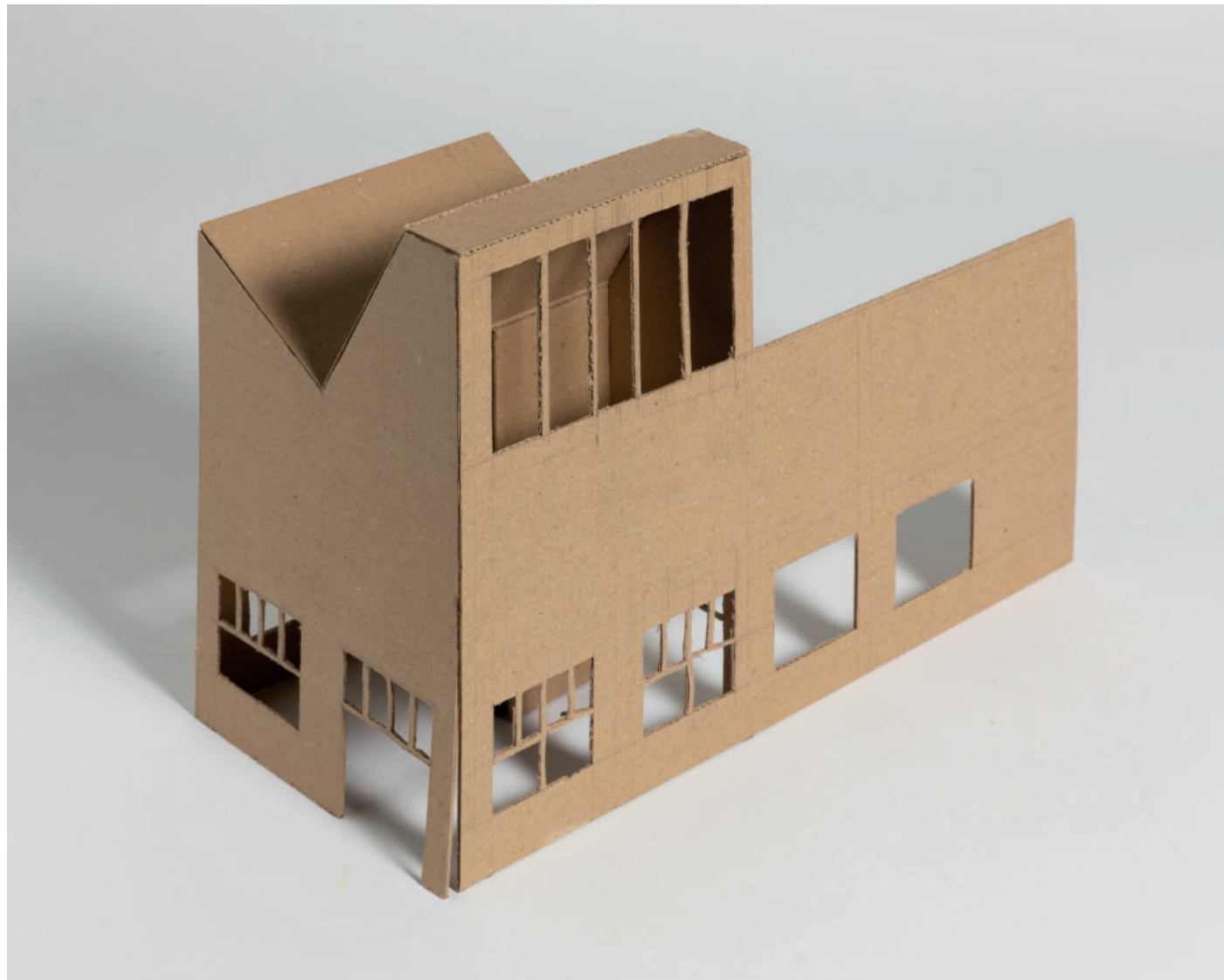
Huyton Bakehouse



Milling Tower Movement Model 1:50

William Peers





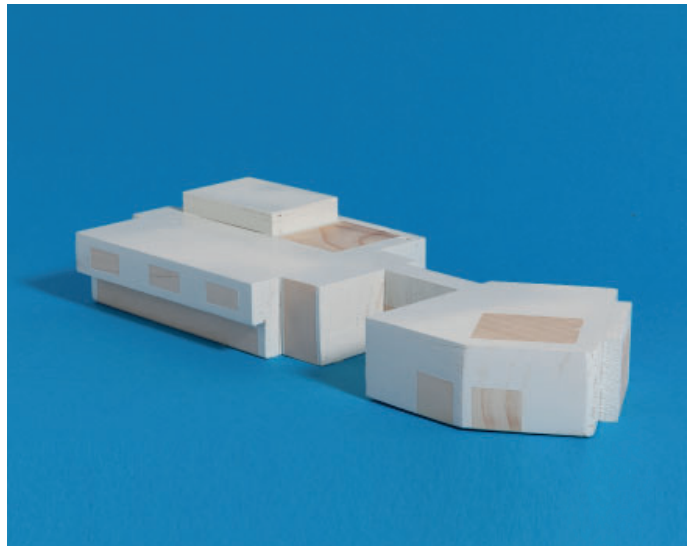
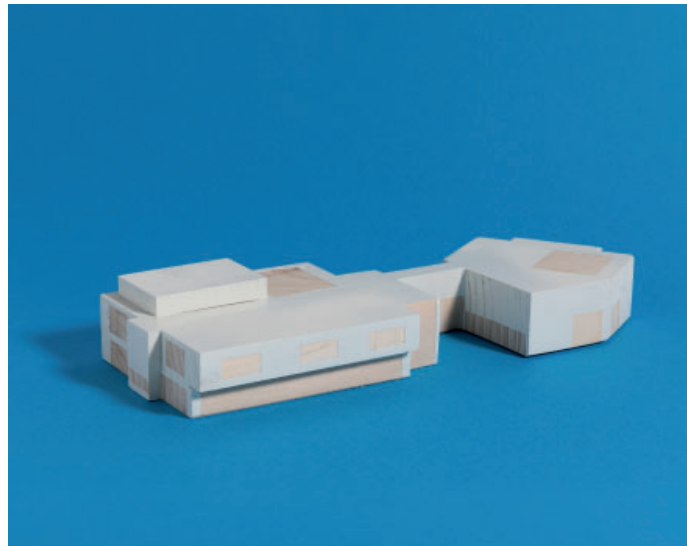
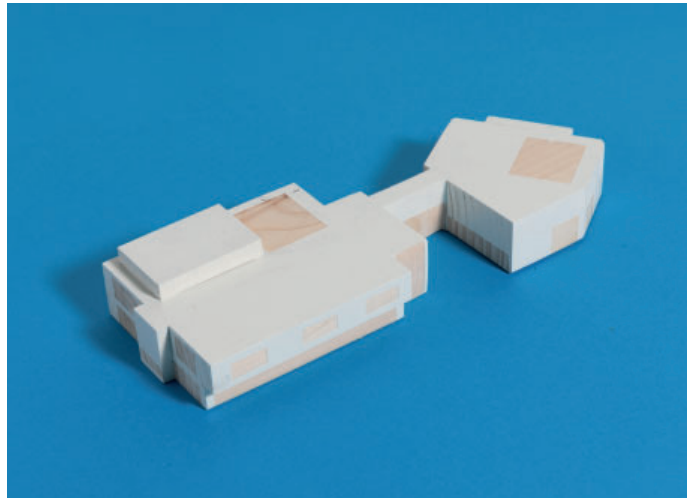
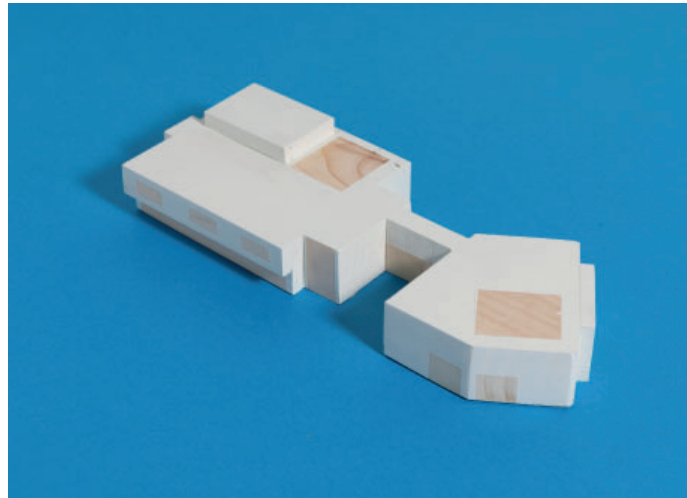
Entrance Model 1:50

Huyton Bakehouse

William Peers







Situ Musokotwane Final Model





Huyton Routes

Section Model



Alfred Campion Development Model





The Village Green

Alfred Campion Final Model

Huyton Routes

Situ Musokotwane Final Model





Huyton Culture House

Xiaotong Dai Final Model

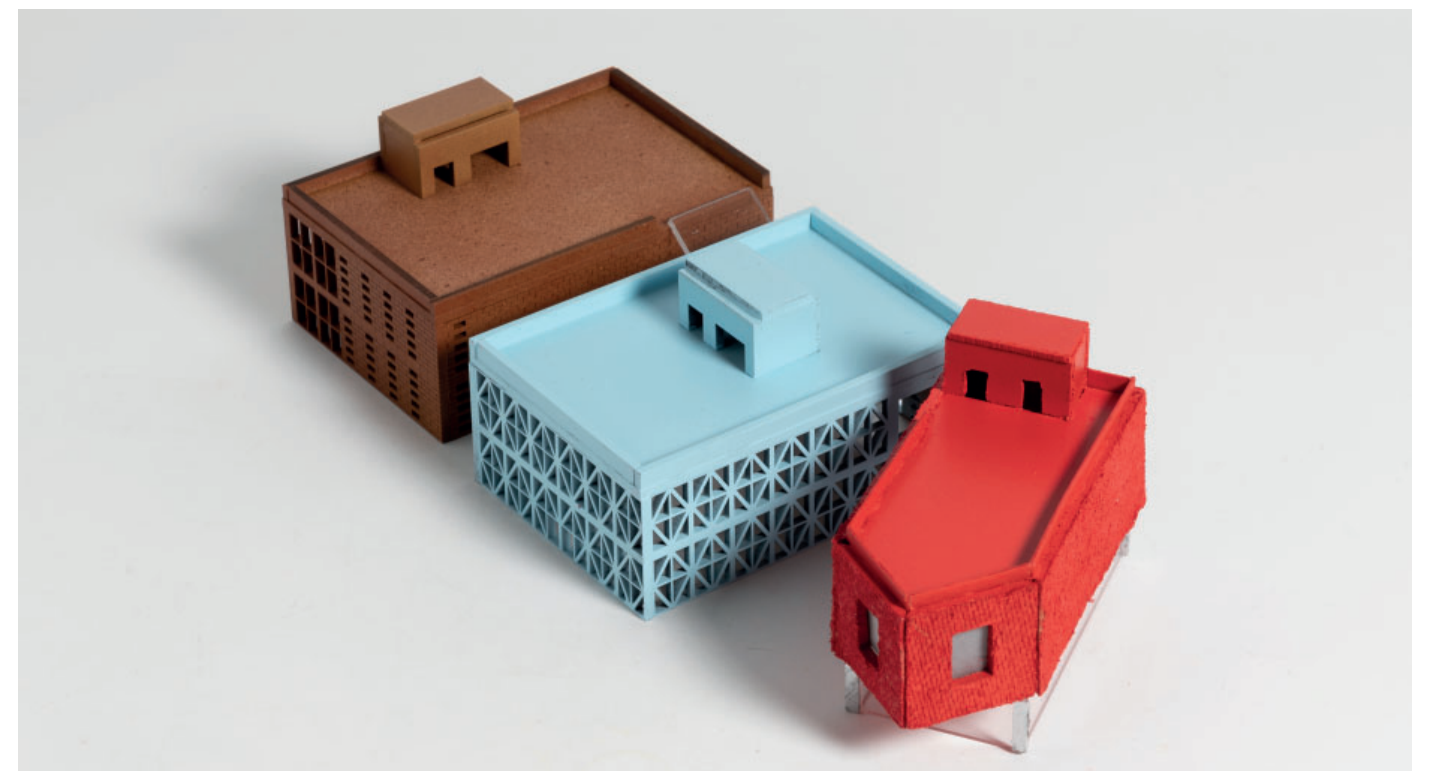
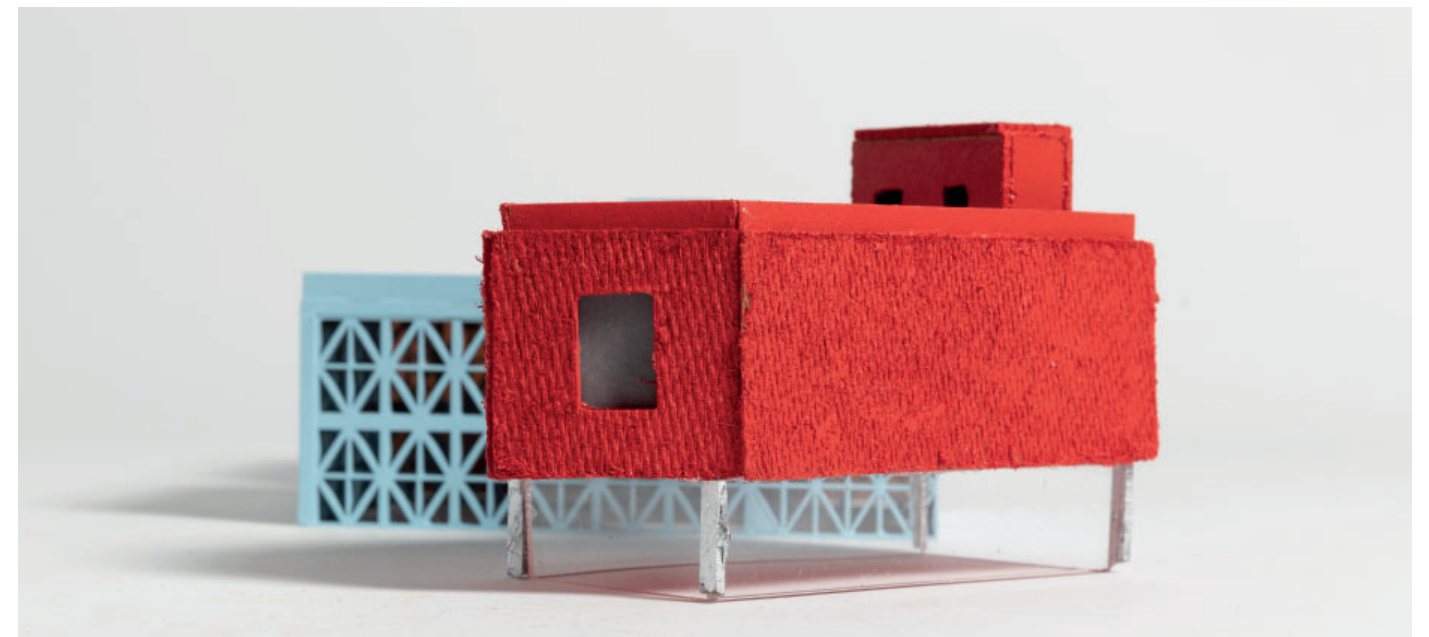






Huyton FABRICated

Emily Walker Final Model







Re-Connect



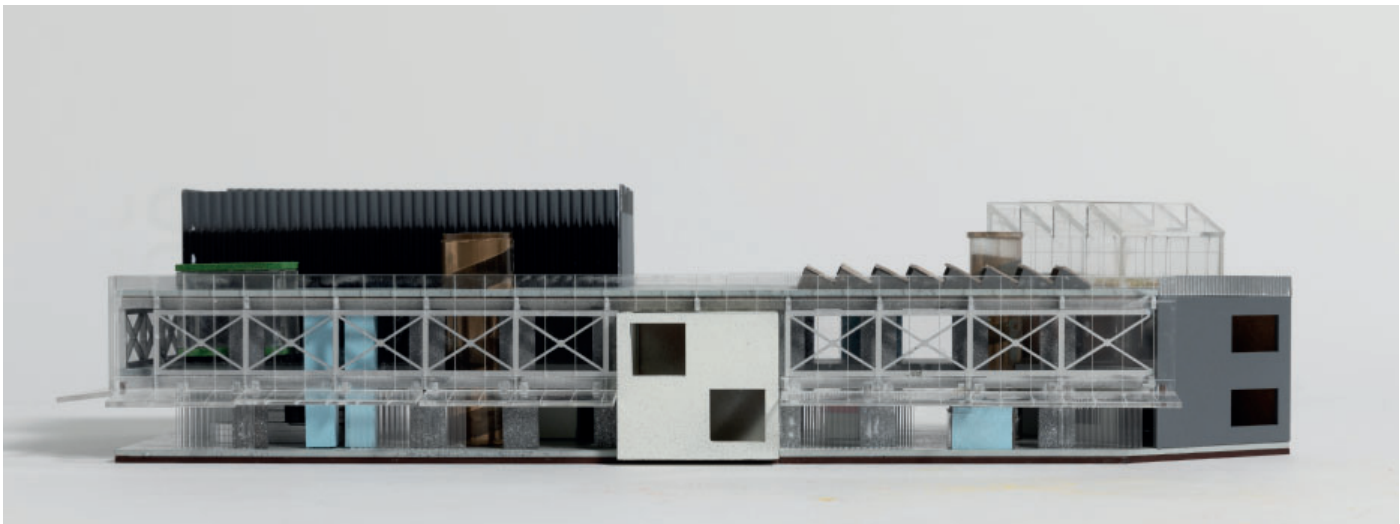
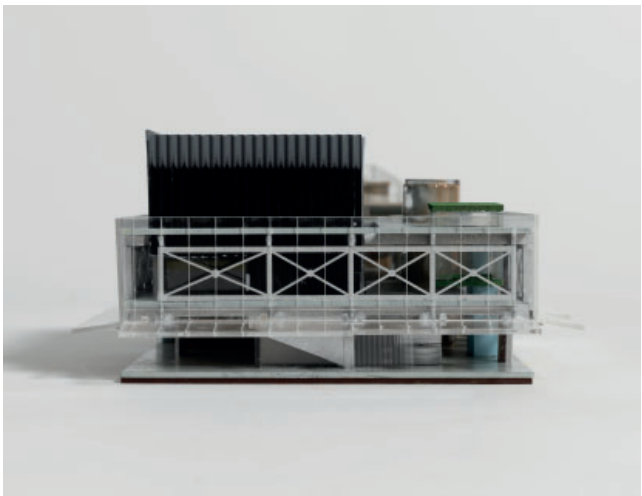
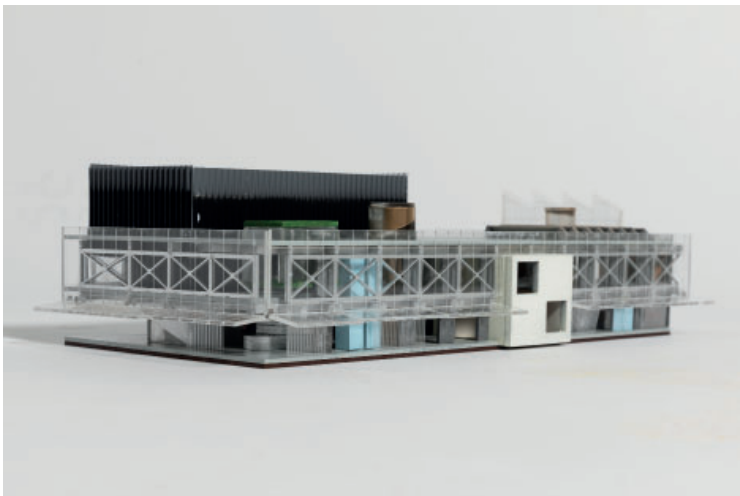
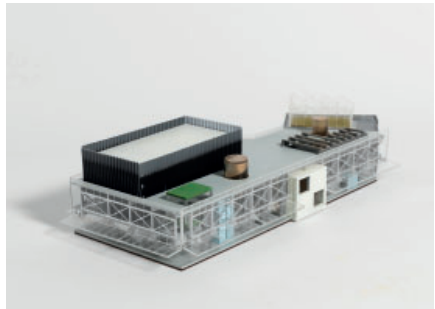
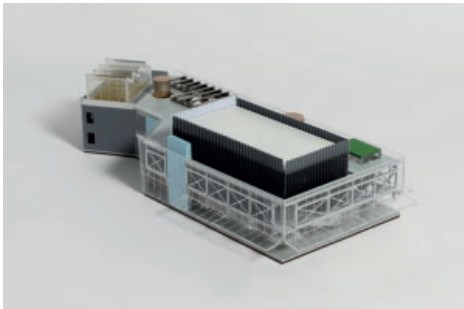
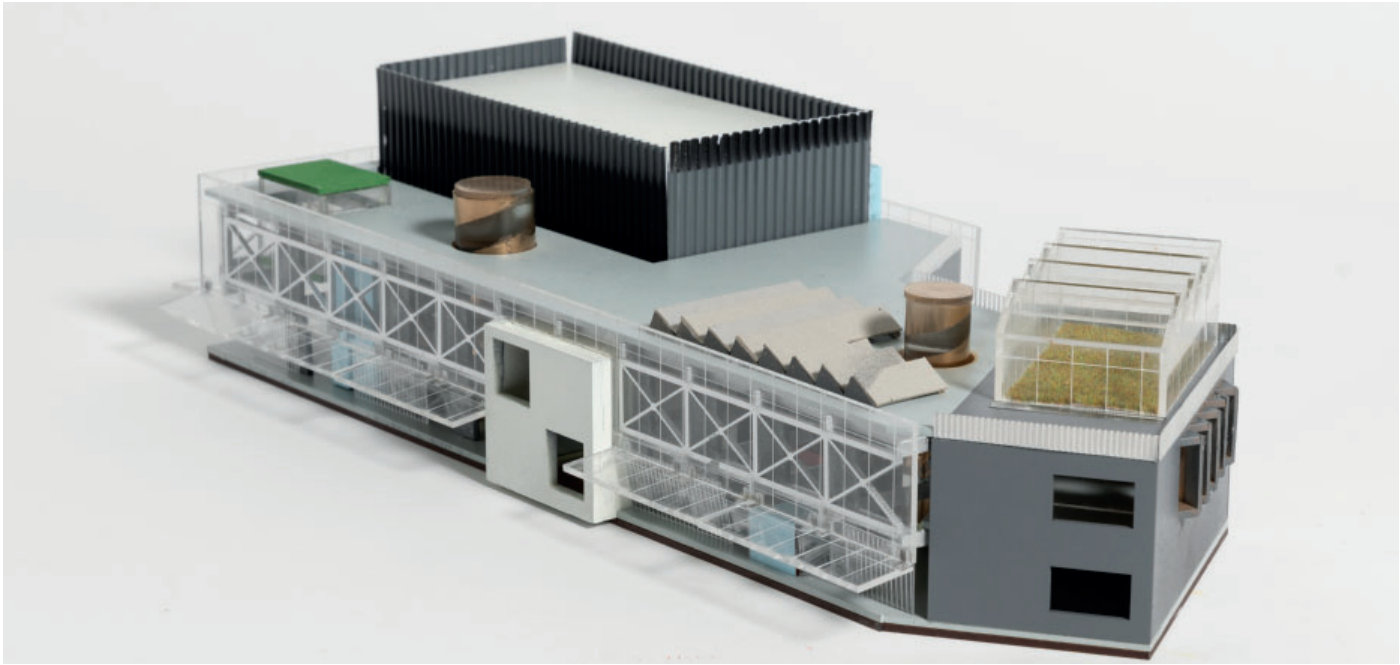
Xin Zheng Final Model





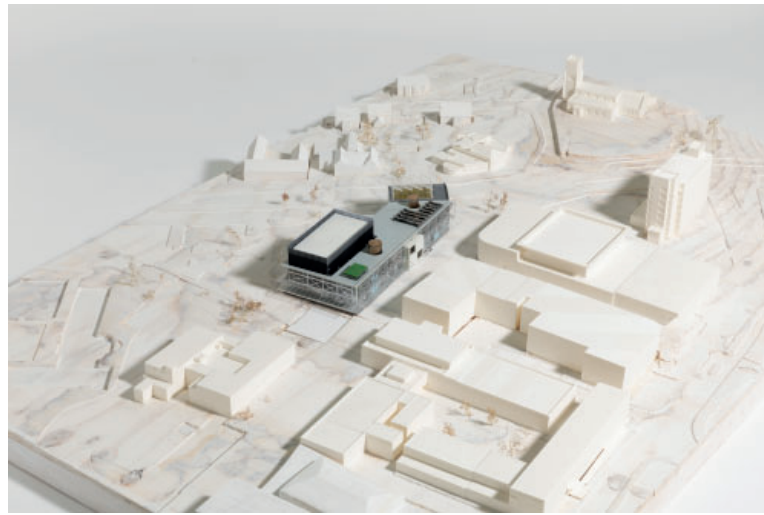
Community Belonging Lab

Yitong Xie Final Model

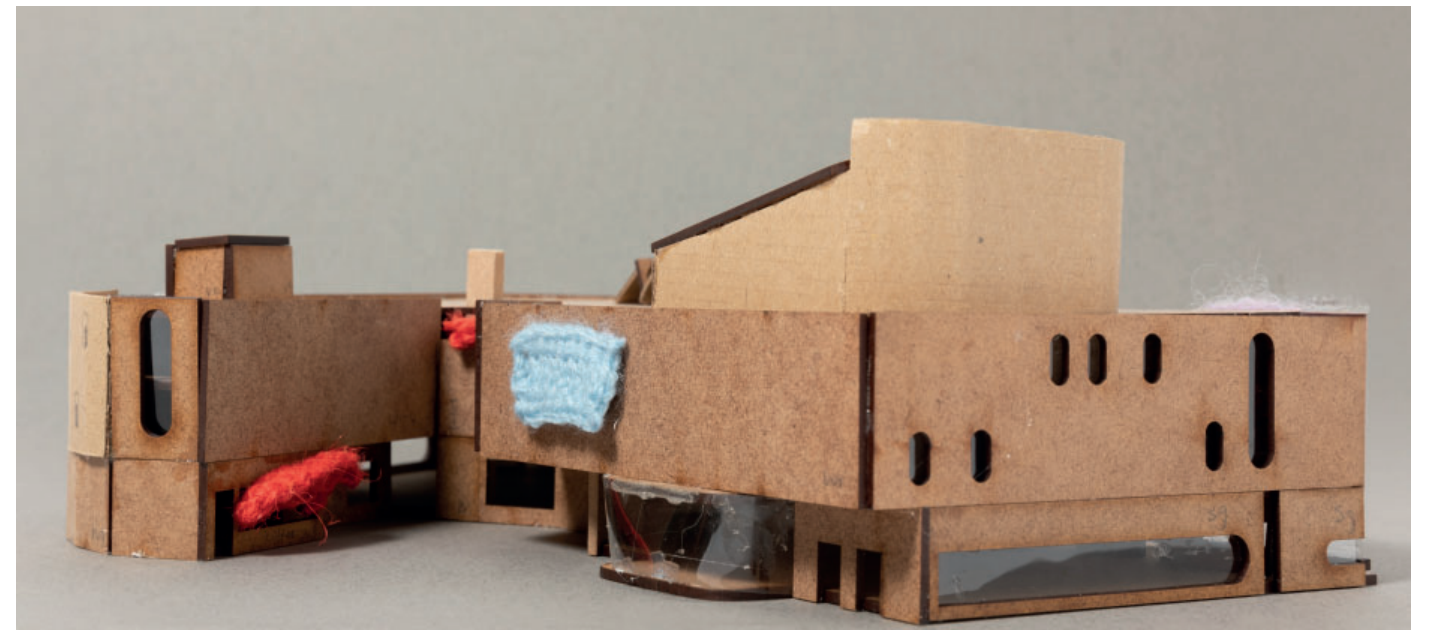
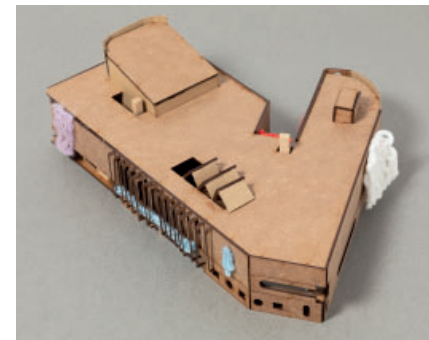
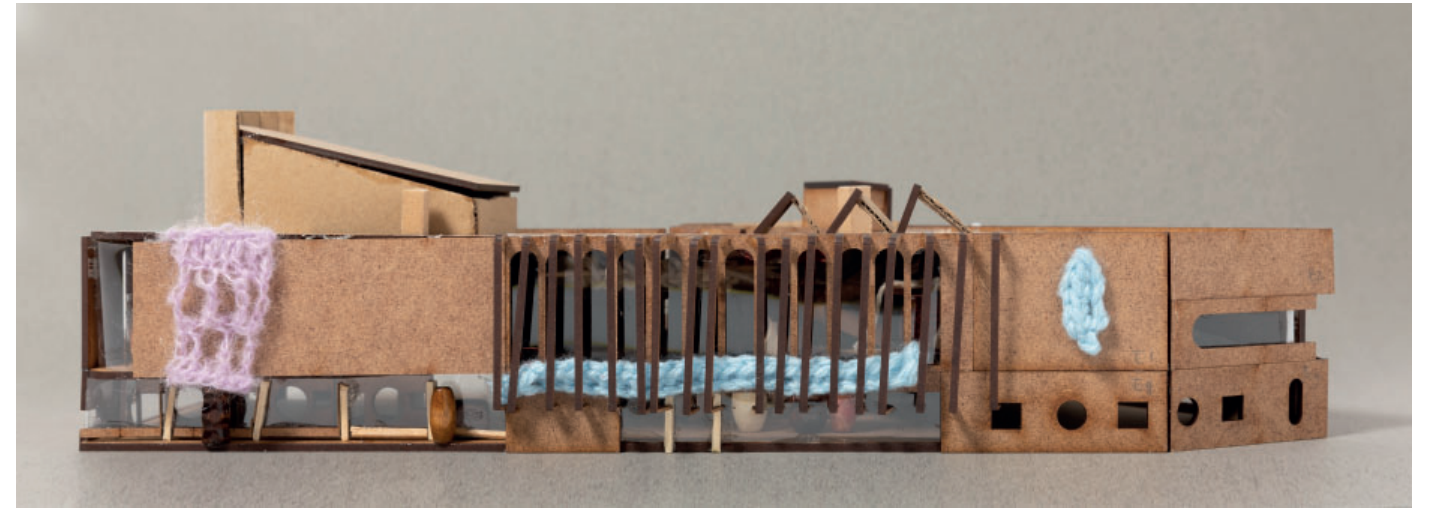


Zhongqi Ye Final Model





Inward Sprawl  
Huyton Village Hub

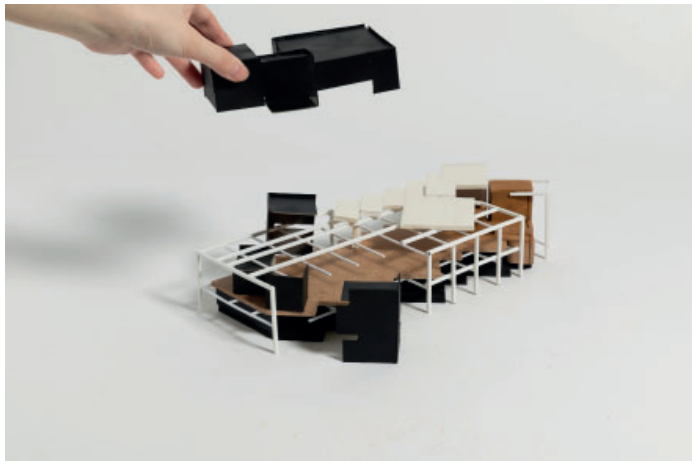
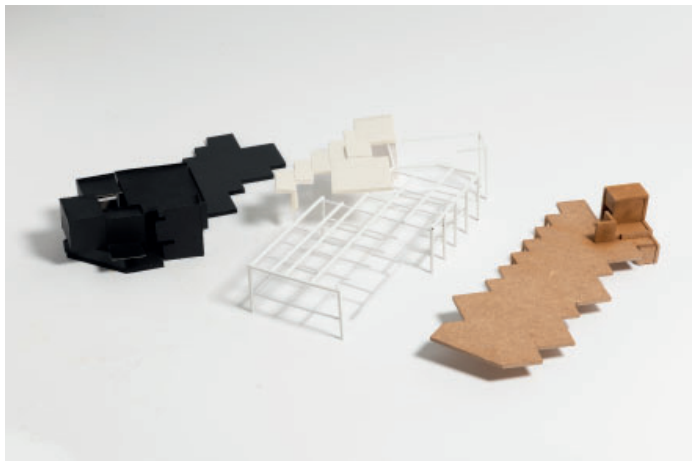






Togetherhness

Yanxiao Liu Final Model



Huyton Design

Wenxin Qin Final Model

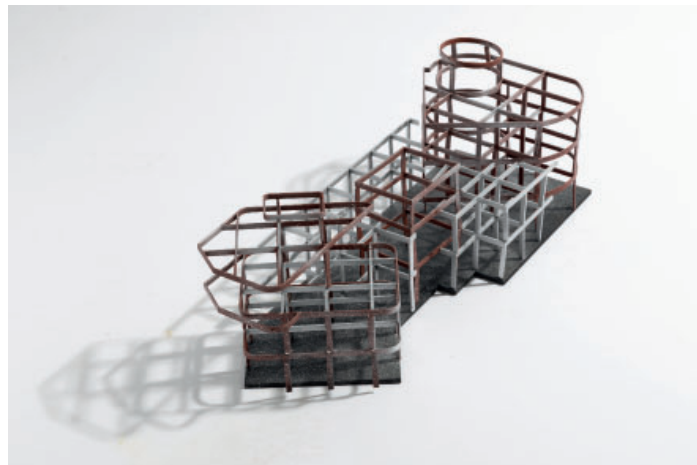




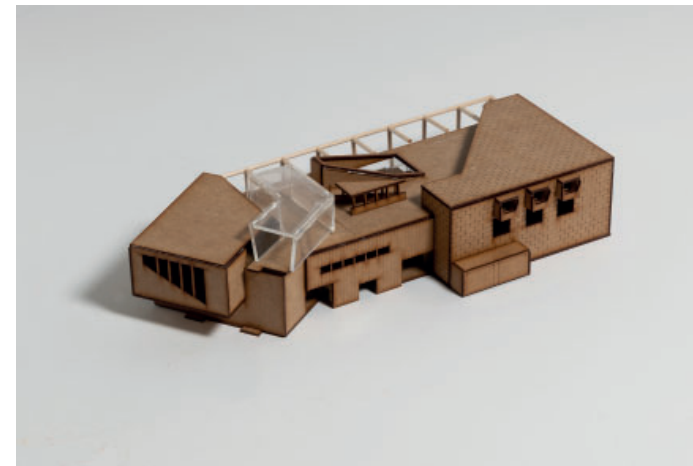
Structural Model

Yanxiao Liu





Yanxiao Liu



Indoor Journey  
Yihan Yang Final Model



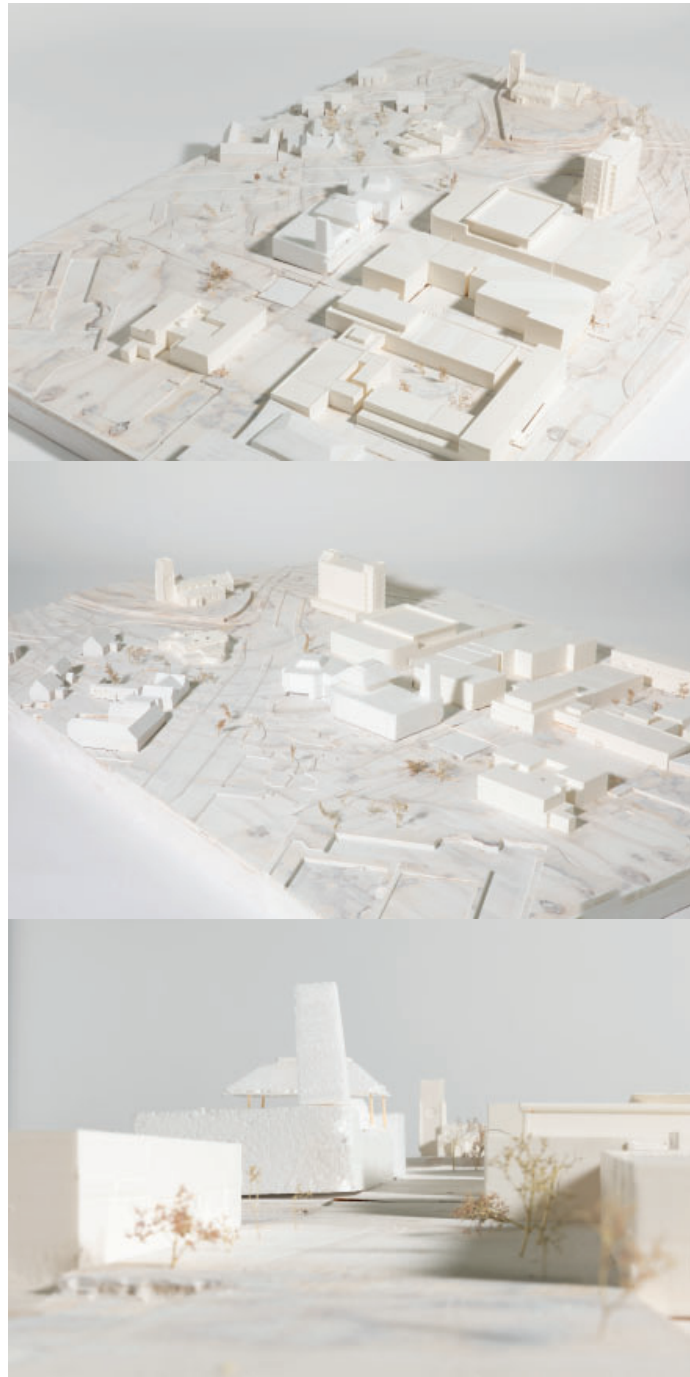




1:20 Tectonic Model

Yanxiao Liu





Huyton Hanger



Anastasia Smith Models

## Culture Connection



Junzhe Zhang Final Model



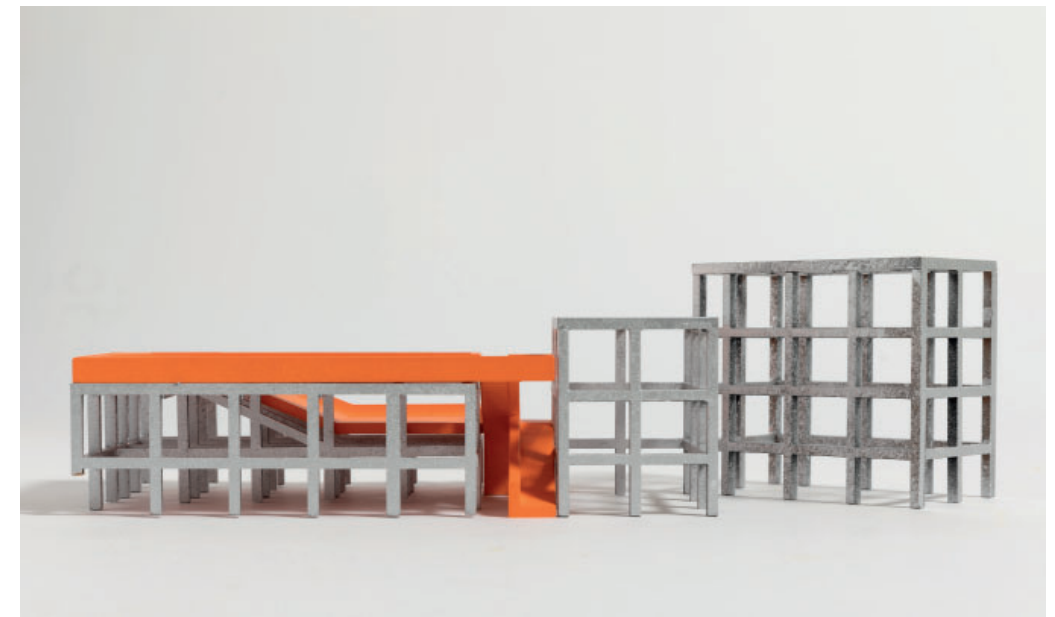




Huyton Hanger



Anastasia Smith Final Model



Culture Connection





Junzhe Zhang Model

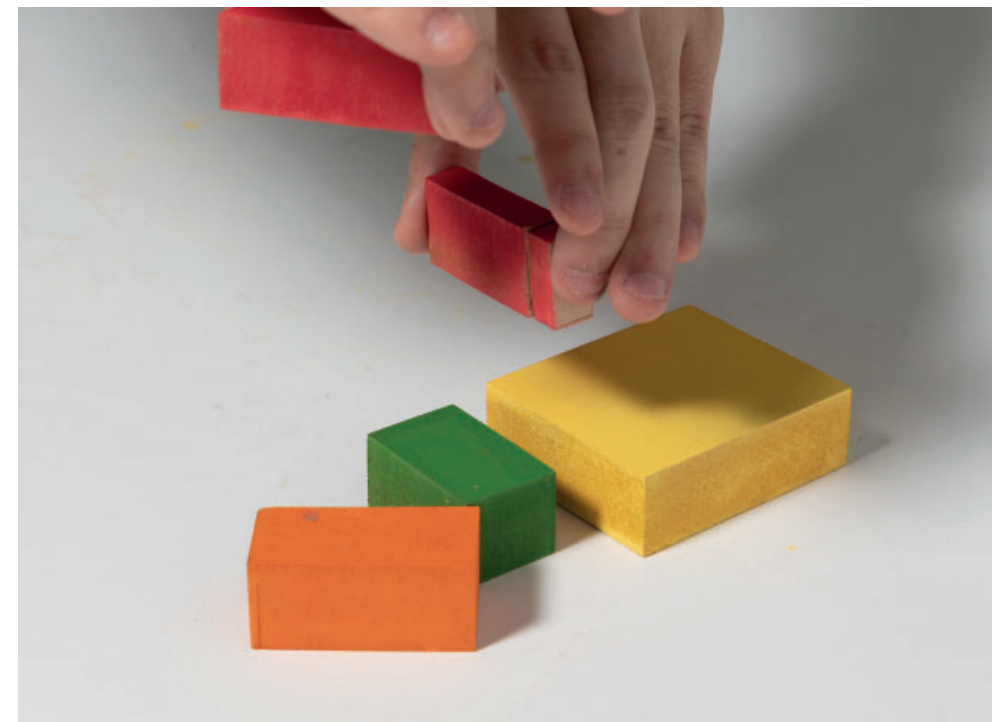
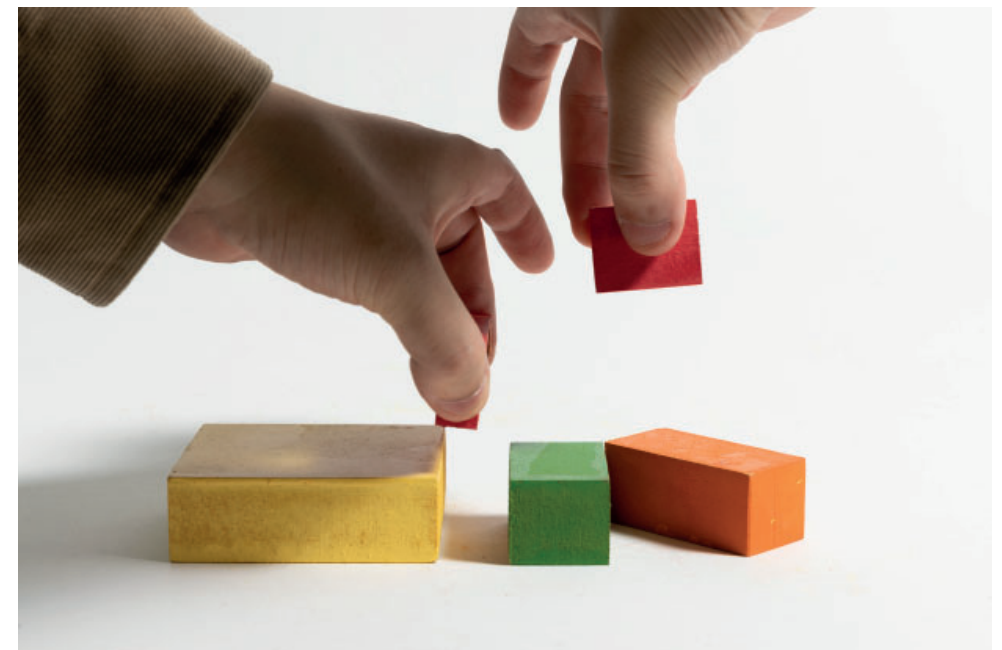
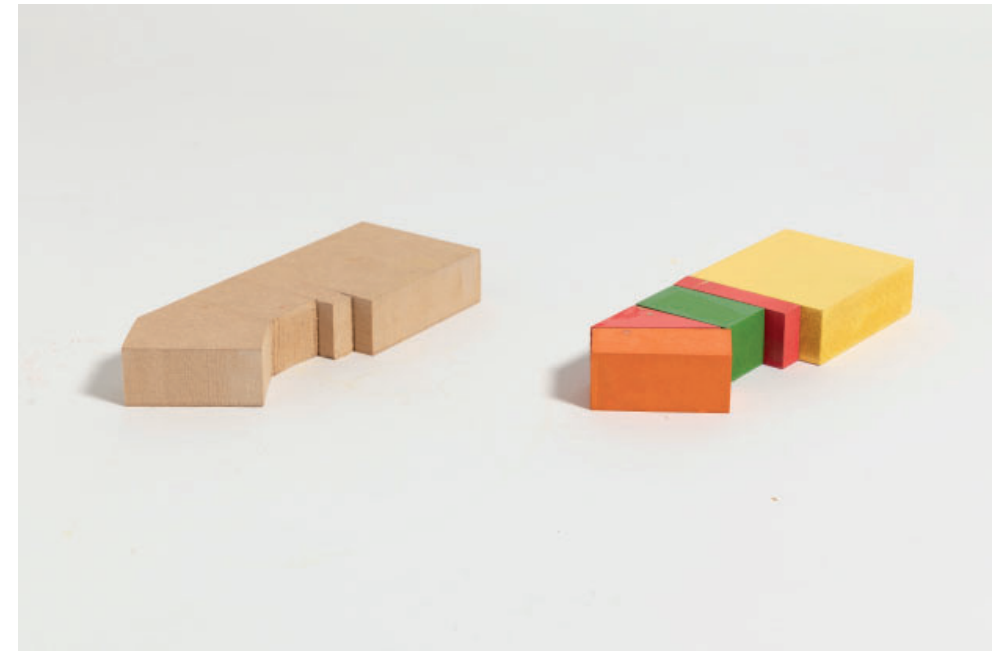
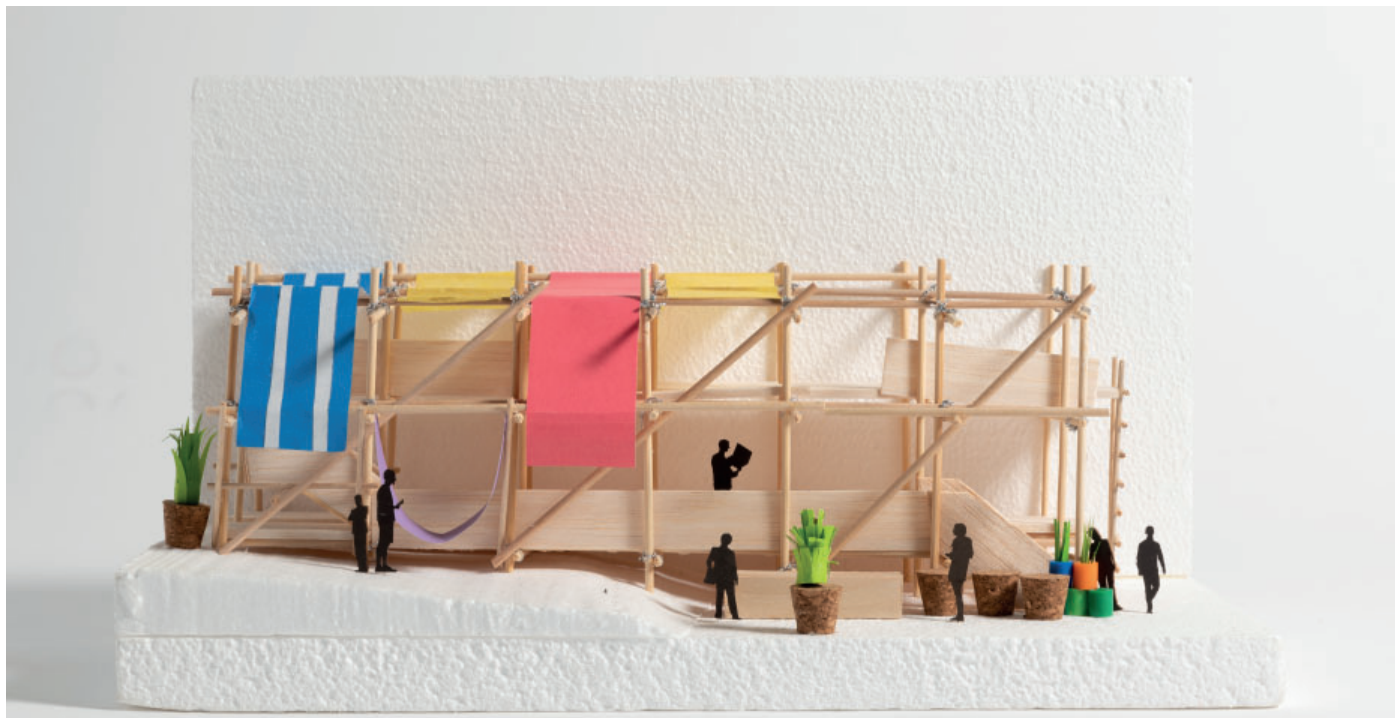
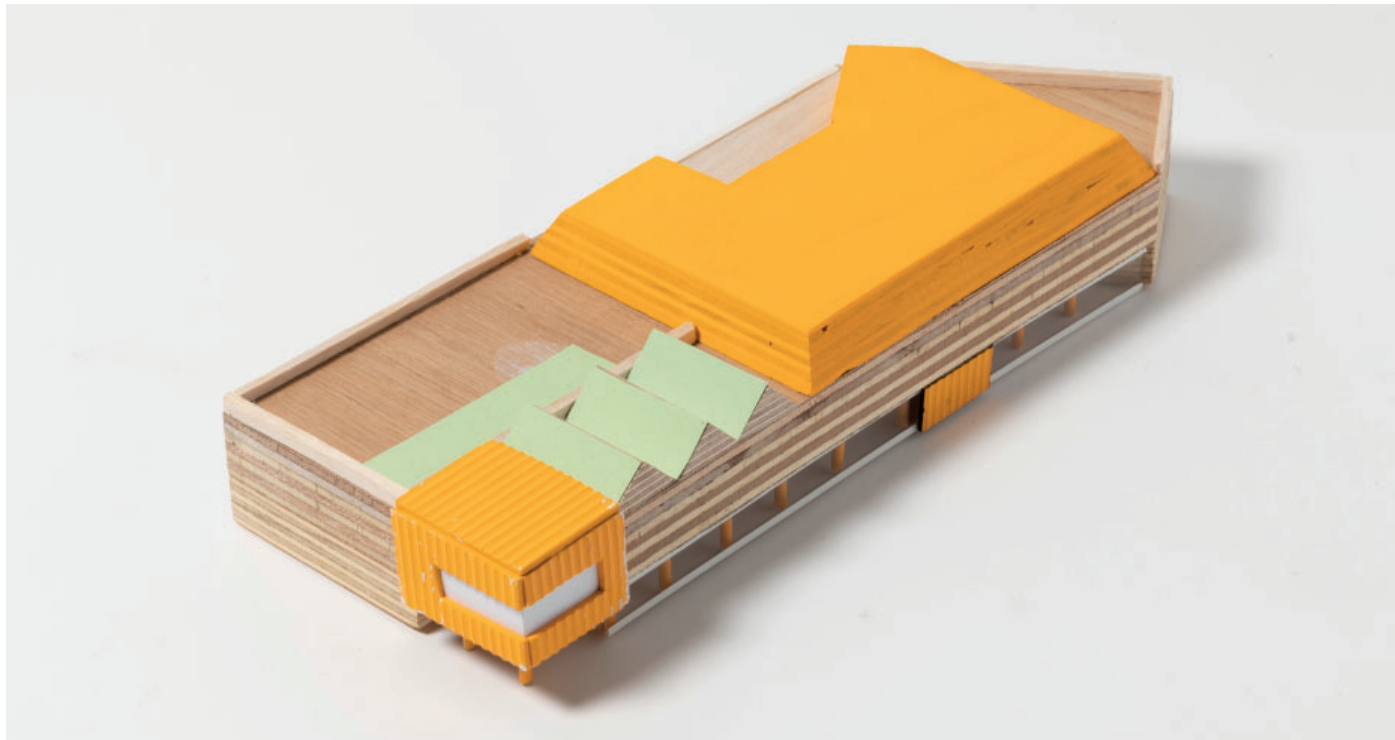
Development Model



Re-StoryHouse

Jamie Malavi Final Model





Culture Connection

Junzhe Zhang Model

Initial Model





Egg Shell Tile

Kasey John



Re-StoryHouse





Treeding On Eggshells

Kasey John Final Model





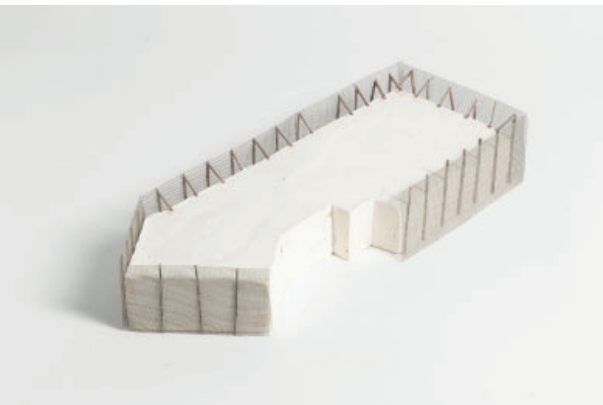
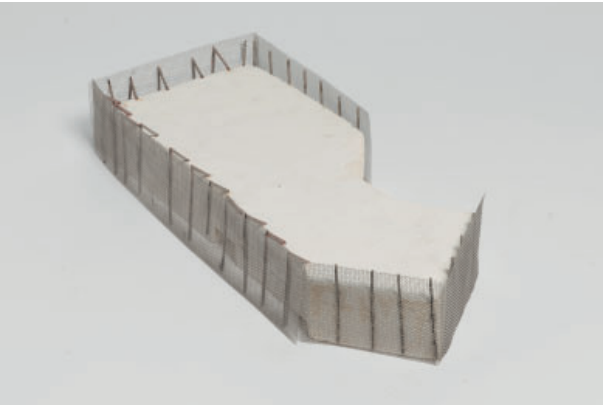
Huyton Village Beacon House

Nathaniel Iglesias Final Model





Playground



Carla Fry Final Model



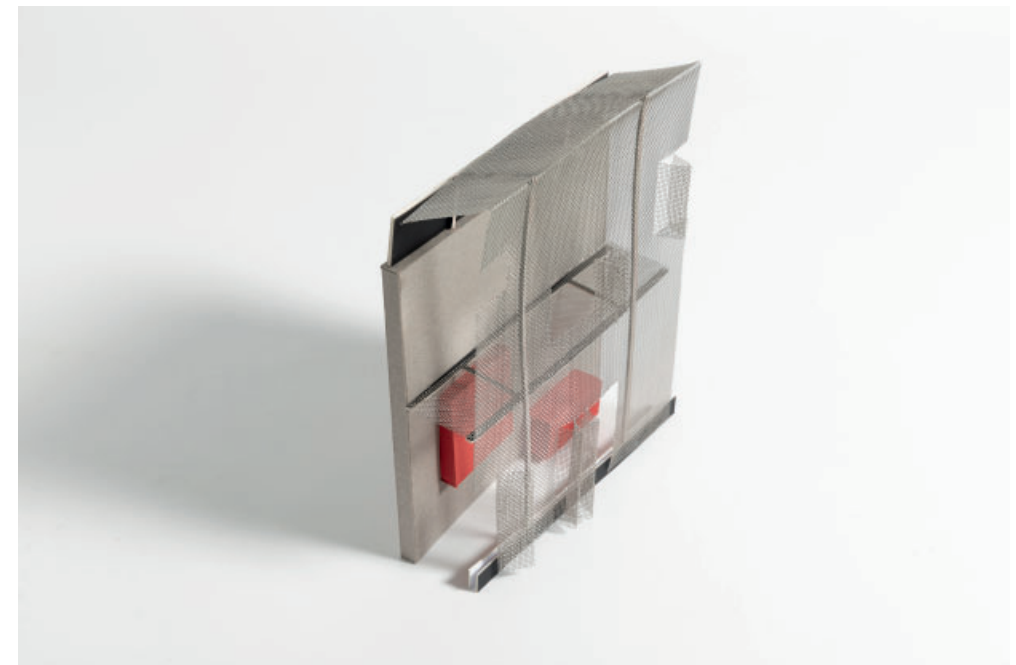
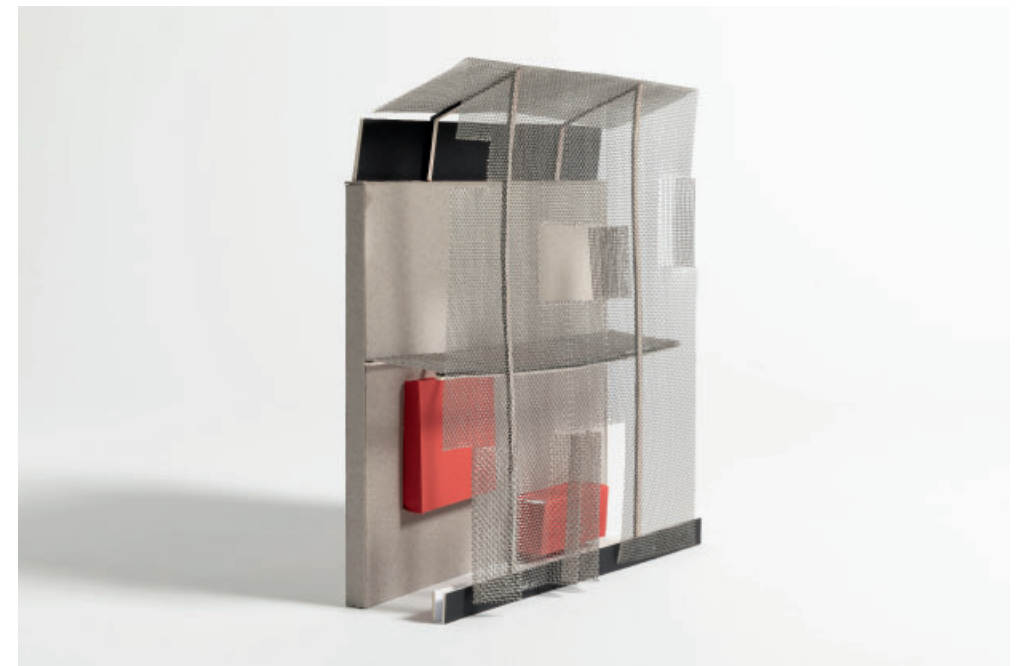
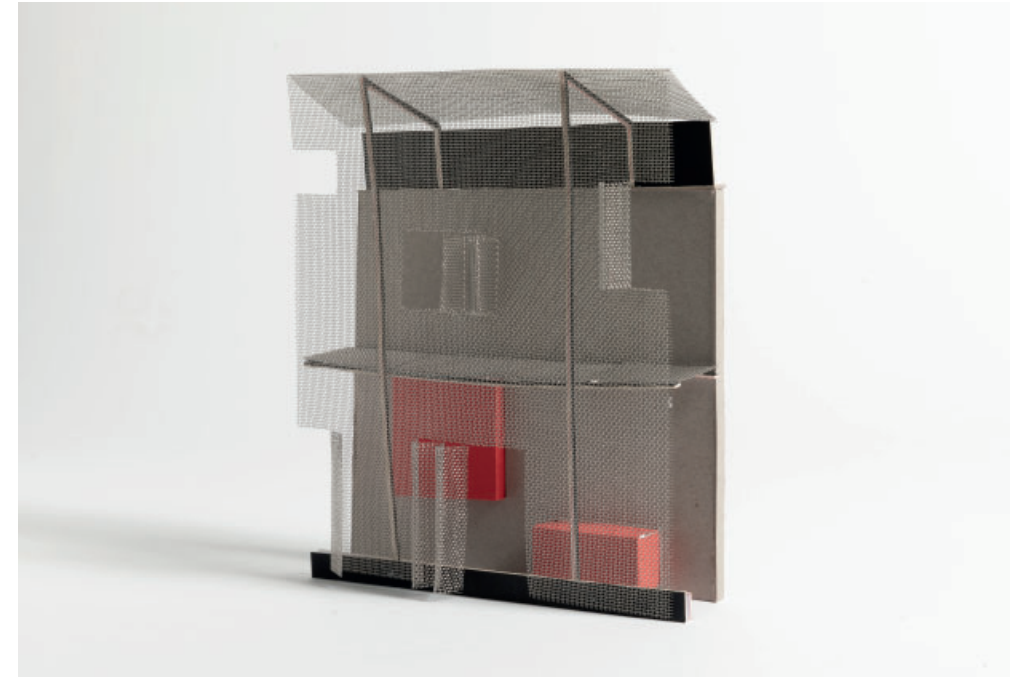
Treeding On Eggshells



Treeding On Eggshells

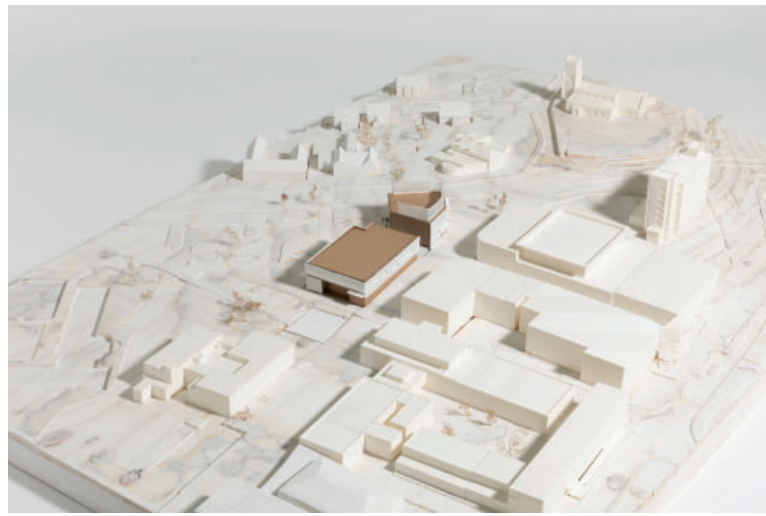


Kasey John Development Model



1:50 Sectional Model





For Huyton

Ella Mead