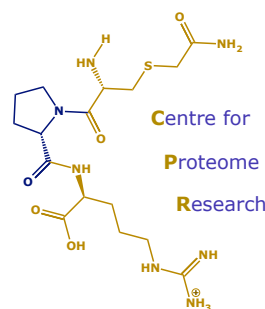


Safe and collegiate working in CPR

(March 2015)



Safety

- In an emergency the following can be found at the Health and Safety Station, located by the hand-wash sinks:
 - - Spill kits
 - Face masks
 - Eye-protection
 - First aid kit
 - Risk assessments
 - Guides for emergency procedures
 -
- The eyewash station is located at the opposite end of the lab, by the cold room.
- Risk assessments must be completed and signed off before work can start, a copy of the risk assessment should be given to Victoria Harman for CPR records.
- Lab coats must be worn at all times whilst in the lab.

Collegiality

- You must make a booking if you wish to use an instrument.
- You can only use instruments on which you have been trained and signed off by Philip Brownridge.
- If you use chemicals or consumables, please inform a member of the group if you notice stock is running low or run out.
- Please always shut the glass doors – they are there to maintain a constant temperature around the instruments.
- USB sticks should not be used with any of the instrument computers – data can be moved using the data drives.
- Your data should be removed from the instrument computer as soon as possible after your completed run.
- Samples/vials/plates etc. should be removed immediately after work is finished.
- Please leave your working area tidy and clean at the end of your work.