



UNIVERSITY OF
LIVERPOOL



Undergraduate

Open Day Guide

**Graduating to
Great Things.**

.....

Saturday 28 September 2013
Saturday 12 October 2013



Join the University of Liverpool and you'll be supported by committed, research leading staff who share a real passion for their subject through their teaching. They can help you get where you want to go, whatever your ambition and wherever your imagination might take you. Open Day is a great opportunity for you to meet some of them, but to find out more, why not visit www.liverpool.ac.uk/openday



**Graduating to
Great Things.**

.....

This is your day, a day to discover what it's really like at the University of Liverpool – one of the UK's leading universities. We hope you enjoy your visit.

We want Open Day to be as useful, informative and enjoyable as possible for you, so we've produced this guide to help you plan and get the most out of your visit. Within this guide you'll find information on the presentations and drop-in sessions you can attend, the tours you can go on, details of where to find everything and a handy planning tool to help you to structure your day.

When you arrive please make your way to one of the three Registration/Information Points. These are situated on University Square (Brownlow Hill, Grid Ref: D7), outside the Sydney Jones Library (Grid Ref: F3) and Ashton Street (Grid Ref: D9) – please refer to the Campus Map on page 35 in this guide.

If you have already pre-registered online please bring your letter/registration slip with you and deposit in the boxes provided. Alternatively you can register on the day. Once you have registered with us, you can head either to the Central Exhibition or to a department of your choice where there will be the opportunity to attend presentations and meet with staff (see pages 18-31). Throughout the day our current students will be on hand to assist with directions and to offer first-hand advice based on their experience of life at Liverpool.

Contents

Welcome	03
What's happening throughout the day?	04
Open day planner	05
Presentations	06
Drop-in	07
Tours	08
Central Exhibition	09
Welcome to Liverpool!	11
Plan your visit	14
Index	16
Departmental activities	18
Places to eat on campus	32
How to find us	34
Campus map	35
Campus map key	37
City map	38

Whatever you decide to do first, make sure you've read through this guide to see what's going on and use the helpful planner over the page to help you get as much out of the day as you can.



For me the whole experience was brilliant. I had a fantastic day and it confirmed to me that this is the university I wish to attend. The presentations for my subject choice were very informative, talking to current students was encouraging and the staff and students were friendly and helpful from getting off the train to finding my way around the campus to buying a meal at the student bar. A great day.



What's happening throughout the day?

Most activities take place on a rolling basis throughout the day and last between 20 minutes and 1 hour 30 minutes.

Time	Activity		Tickets Required
09.00-14.30	Presentations (page 06/07)	University of Liverpool Welcome Accommodation Liverpool Guild of Students/Sport Liverpool Student Finance and Funding Financial support for Allied Health and Nursing Professions Study Abroad Careers & Employability Service	No No No No No No No No
10.00-16.00	Drop in (page 07)	Library and Computing Facilities Honours Select Sport Liverpool	No No No
10.00-15.00			
09.30-15.00	Central Exhibition (page 09/10)	Key information on our programmes, the application process, accommodation, postgraduate study, student support and facilities, Liverpool Guild of Students and advice for international and mature students	No
09.30-15.00	Campus Tours (page 08)	Tours of the University's campus	No
From 09.00 onwards (see individual department entry)	Visits to Academic Departments (pages 18-31)	Academic departments are open for you to meet our current staff and students	Tickets required to visit: Dentistry (see page 21) Diagnostic Radiography Medical Imaging Lab Tours (see page 21) Management School (see pages 26/27) Medicine (see page 27) Occupational Therapy (see page 28) Physiotherapy (see page 30) Veterinary Science (see page 31)
10.00-15.00	Visits to the off-campus Halls of Residence (page 08)		No
10.00-15.00	Visits to the on-campus Halls of Residence (page 08)		Yes – collect from the Accommodation Stand in the Central Exhibition
11.00-14.30	Tours of Liverpool City Centre (page 08)		No
10.00-14.00	Tours of the Library Facilities (page 08)		No

Open day planner

We suggest you plan your visit around the timings of the activities in the department(s) you're most interested in. Please note the start and finish times as some activities close earlier than others – we wouldn't want you to miss anything!

Time	Event	Location
09.00		
09.30		
10.00		
10.30		
11.00		
11.30		
12.00		
12.30		
13.00		
13.30		
14.00		
14.30		
15.00		
15.30		
16.00		

Presentations

A series of talks on many aspects of life and study at the University of Liverpool.

Please note that spaces for these talks are limited and therefore places will be available on a first come first served basis.

UNIVERSITY OF LIVERPOOL WELCOME

Time: 09.00 and 09.45

Duration: approximately 20 minutes

Location: Lecture Theatres, Sherrington Building, Building No. 311 (Grid Ref: D9)

An overview of the University of Liverpool, highlighting our academic achievements and support facilities.

STUDENT FINANCE AND FUNDING

Time: 11.30 and 13.30

Duration: 30 minutes

Location: Lecture Theatre A, Central Teaching Hub, Building No. 221 (Grid Ref: F6)

An overview of the financial arrangements and managing on a budget from a student's perspective.

ACCOMMODATION

Time: 10.15, 11.00, 12.00, 13.00 and 14.00

Duration: approximately 20 minutes

Location: Lecture Theatre A, Central Teaching Hub, Building No. 221 (Grid Ref: F6)

What accommodation is available at the University of Liverpool, how do you apply and how much does it cost?

LIVERPOOL GUILD OF STUDENTS/SPORT LIVERPOOL

Time: 11.00 and 13.00

Duration: 30 minutes

Location: Lecture Theatre B, Central Teaching Hub, Building No. 221 (Grid Ref: F6)

The Guild of Students will offer an insight to the student experience when studying and living in Liverpool. An overview of the excellent sports facilities offered by the University, including details of the Sport Liverpool Scholarship Scheme for talented athletes.

STUDY ABROAD

Time: 10.30, 12.30 and 13.30

Duration: 20 minutes

(with time for Q&A afterwards)

Location: Lecture Theatre C, Central Teaching Hub, Building No. 221 (Grid Ref: F6)

Study Abroad is the opportunity for students from a wide-range of degree programmes to spend some time abroad as part of their University of Liverpool degree. Study Abroad allows you to enhance your degree, discover new places and cultures and increase your employability prospects after graduation. Best of all, you don't need to speak, or be studying, a foreign language to take up this opportunity. This talk will cover the basics of everything you need to know, including finance and funding, our partner universities and how to apply.

Don't forget to visit the Study Abroad stand in the Central Exhibition too, where staff from the Study Abroad Team and past study abroad students will be available all day for a chat.

FINANCIAL SUPPORT FOR ALLIED HEALTH AND NURSING PROFESSIONS

Time: 09.30 (unfortunately, to avoid disruption for other attendees, admittance to this talk will not be allowed after 09.35)

Duration: 40 minutes

Location: Thompson Yates Lecture Theatre, Thompson Yates Building, Building No. 301 (Grid Ref: C8)

This talk is provided by the Financial Support Team at the University and will outline the financial support available to allied health professions and nursing students. Students studying medicine and dentistry should visit the Financial Support Team information stand in the Central Exhibition for details on funding.

(Continued over)

Presentations (continued)

CAREERS & EMPLOYABILITY SERVICE

Time: 13.00

Duration: 30 minutes

Location: Lecture Theatre D, Central Teaching Hub, Building No. 221 (Grid Ref: F6)

Every student at the University of Liverpool has access to an extensive careers programme which enables you to develop your skills, meet with recruiters, gain work experience and get one-to-one guidance and support as you progress through your studies.

This talk will cover the wide range of opportunities you will have to increase your employability and how the Careers & Employability Service works with you from the start of your studies to beyond graduation to help you achieve your career goals.

You can also visit the Careers & Employability Service stand in the Central Exhibition (see page 09/10), where our staff will be available all day to answer any specific questions you may have.

Drop-in

LIBRARY AND COMPUTING FACILITIES

Time: 10.00-16.00

Location: Harold Cohen Library, Building No. 431 (Grid Ref: D8) and Sydney Jones Library, Building No. 433 (Grid Ref: F3)

The University has two main libraries which are accessible 24 hours a day Monday to Friday. The libraries hold over two million printed volumes and provide access to a further 520,000 electronic books and 40,000 electronic journals.

The libraries provide 1,830 study spaces and access to approximately 700 PCs. In total there are over 1,400 PCs for students on campus; all are networked with access to a wide range of services, such as email, the web and applications such as word processing, spreadsheet, database, bibliographic, programming languages, computer aided design and statistical software.

If you live in Halls you can connect to the network via the ResNet service. Wireless computing is available in numerous sites both on and off campus, including cafes and bars.

HONOURS SELECT

Time: 10.00-16.00

Location: Foyer, Rendall Building, Building No. 432 (Grid Ref: D2)

Honours Select is a new way of studying humanities and social sciences at Liverpool. It gives you the opportunity to study our subjects in more flexible ways. Pop along to the information table to discuss your options and ask any questions you might have.

SPORT LIVERPOOL

Time: 10.00-15.00

Location: Sports Centre, Building No. 511 (Grid Ref: D4/D5)

Please drop in at any time to look around our newly refurbished Sports & Fitness Centre. Pick up a map of the centre from the Sports Centre reception and staff will be available to answer any questions.
www.liverpool.ac.uk/sports

Tours

VISITS TO THE OFF-CAMPUS HALLS OF RESIDENCE

Time: 10.00-15.00 (Coaches leave every 10 mins)

Location: departing from Oxford Street, rear of Sydney Jones Library, Building No. 433 (Grid Ref: F4)

Duration: approximately 1 hour 30 minutes (including journey time)

Tickets NOT required: please note that visitors cannot visit the Halls independently. The Halls will close at 16.00

- Guided coach tours to University Halls of Residence
- Your chance to talk to students about life at the Halls of Residence
- Visit a student's room
- The Dining Rooms at Carnatic and Greenbank will be open between 10.30-14.30 for drink refreshments.

VISITS TO THE ON-CAMPUS HALLS OF RESIDENCE

Time: 10.00-15.00

Location: Vine Court, Building No. 804 (Grid Ref: F1)

Tickets required: available from the Accommodation stand in the Central Exhibition, Sports Centre, Building No. 511 (Grid Ref: D4/D5)



COACH TOURS OF LIVERPOOL CITY CENTRE

Time: 11.00-14.20 (Coaches leave throughout the day at 20 minute intervals, the last coach leaves at 14.20)

Location: departing outside the Hart Building on Mount Pleasant, Building No. 766 (Grid Ref: D6)

Duration: approximately 45 minutes

Tickets NOT required

Offered in conjunction with The Liverpool Tour Guide Service, this coach tour includes the River Mersey, Albert Dock, Pier Head, Liverpool City Centre and many of the city's famous landmarks.

TOURS OF UNIVERSITY CAMPUS

Time: at regular intervals between 09.30 and 15.00

Location: Campus Tour Stand, Guild Walk (Close to Sports Centre, Building No. 511, Grid Ref: D4/D5)

Duration: approximately 45 minutes

Tickets NOT required

On the tour you will visit the Sports Centre, a central Library, computing facilities and the Guild of Students (Students' Union). The tour offers you the opportunity to see the main features of our campus and, as all guides are current students, you will have the opportunity to hear a first hand account of the student experience.

TOURS OF THE LIBRARY FACILITIES

Time: 10.00-14.00

Location: Harold Cohen Library, Building No. 431 (Grid Ref: D8) and Sydney Jones Library, Building No. 433 (Grid Ref: F3)

Duration: 15 minutes

Tickets NOT required

On the tour you will hear about our services, and see our flexible study areas and computing facilities.

Central Exhibition

Call in any time between 09.30 and 15.00 in the Sports Centre, Building No. 511 (Grid Ref: D4/D5) to pick up information and talk to staff and University representatives.

Includes:

- Central Information Point
- General Enquiries and Admissions
- Student Finance
- Sport Liverpool
- VisitLiverpool.com

INTERNATIONAL STUDENTS

www.liverpool.ac.uk/international

A member of the International Team will be available to answer any questions you may have about life and study in Liverpool. You will also find information specifically for international students on issues such as scholarships and fees, accommodation choices, faith requirements and living costs.

MATURE STUDENTS

www.liverpool.ac.uk/study/undergraduate/adult

An adviser will be available at the Information Point to answer any questions you may have about life and study in Liverpool as a mature student.

POSTGRADUATE STUDY AT LIVERPOOL

www.liverpool.ac.uk/study/postgraduate

Open Days are a great opportunity for prospective postgraduate students to come and have a look around our campus too. There is a postgraduate stand in the Central Exhibition where visitors can pick up a prospectus and talk to staff about general admissions enquiries. There's also a chance to engage in the central activities on offer such as tours of the campus, facilities and departments.

For department specific postgraduate activities please visit www.liverpool.ac.uk/open-day/postgraduate.htm

STUDENT SUPPORT

www.liverpool.ac.uk/student-support

Advisers from our Student Support Services will be available to provide information about general welfare and practical living support at the University. Specialist advisers from our Disability and Financial Support Teams will also be available to give individual specialist advice.

Please do speak to any of the team if you have concerns or support needs.

GO HIGHER

www.liverpool.ac.uk/go-higher

Go Higher is an award-winning Access to Higher Education programme. One-year long and part-time, Go Higher prepares you for taking a university degree in the Faculty of Humanities and Social Sciences. If you have been away from study for a long time or have no formal qualifications then this could be the programme for you. Members of the teaching team and former students will be available to talk to you about the programme and answer any questions.

ACCOMMODATION OFFICE

www.liverpool.ac.uk/accommodation

Please visit the Accommodation stand in the Central Exhibition for full details of our popular off-campus student villages and our on-campus residences. University accommodation for 2014/15 includes the arrival of Crown Place offering 1,259 self-catered ensuite rooms located right in the heart of our Central Campus. This project will continue the University's strategy to provide a first class student experience.



CARMEL COLLEGE

www.liverpool.ac.uk/study/undergraduate/applying/foundation

The University of Liverpool offers a number of science, engineering and medical science-based degrees which include a Foundation year spent at Carmel College in St. Helens. Please visit the Carmel College stand in order to find out more about entry requirements.

CAREERS & EMPLOYABILITY SERVICE

www.liverpool.ac.uk/careers

The University of Liverpool's award-winning Careers & Employability Service is here to help you make the most of your time at university by providing a range of expert advice and information to give you a head start in the graduate job market. Visit our stand and talk to our staff about gaining experience, developing employability skills, choosing a graduate career and how studying at the University of Liverpool brings with it numerous career benefits.

LIVERPOOL GUILD OF STUDENTS

www.lgos.org

Liverpool Guild of Students (LGoS) supports students throughout the course of their studies. We offer advice, a range of extra-curricular activities, and are at the very heart of the social life on campus. As a charity, we have a clear mission to improve the quality of life for all Liverpool students.

We LISTEN to students – Our ultimate aim is to ensure that we can get more of what you like, and improve the things that you don't like.

We LOBBY for students – We take your ideas to improve your time in Liverpool.

We offer opportunities to LEAD – The Guild elects a President, Deputy and two Vice-Presidents each year to lead the work that we do.

We help you settle in – The Guild helps you to solve any problems you might have, by offering support at the start, as well as throughout your time at university.

We bring students together – The Guild does this through supporting student societies and volunteering, and by putting on gigs and events – particularly during Welcome Week.

In 2012/13 the Guild secured a £13.75 million investment from the University to refurbish our main building on Mount Pleasant. This will ultimately deliver high quality facilities, which will have a long lasting positive impact on the experience of students.

STUDY ABROAD

www.liverpool.ac.uk/goabroad

Studying abroad as an exchange student as part of your University of Liverpool degree offers unforgettable experiences and the chance to stand out in the graduate job market. Come and speak to a member of the Study Abroad Team to find out more about this amazing opportunity. Liverpool students who have already studied abroad will also be on hand to tell you first-hand about their experiences. Liverpool has a special partnership with Xi'an Jiaotong-Liverpool University (XJTLU) in China giving Liverpool students the chance to follow their Liverpool degree programme in China, delivered entirely in English. Open Day is a great opportunity to find out about Study Abroad in general and in particular our unique partnership with XJTLU.

📺 See what our current students have to say about studying and living in Liverpool www.liverpool.ac.uk/study/undergraduate/video

Welcome to Liverpool!

Liverpool. The very name conjures up images of a world-beating musical heritage, two of the Premiership's biggest football teams, a glorious maritime history and not one, but two majestically different Cathedrals. This Northwest city and the surrounding City Region is certainly all those things, but it is also so much more. Liverpool is undergoing a thrilling renaissance, recognised by its hugely successful year as European Capital of Culture.



CULTURE & HERITAGE

Art

Tate Liverpool is the home of the National Collection of Modern Art in the North and is staging a must-see major blockbuster exhibition, Chagall: Modern Master until 6 October.

The city has numerous permanent art attractions too. Don't miss the impressive **Open Eye Gallery**, one of the UK's first dedicated photographic galleries. Located near Tate Liverpool, Open Eye has recently moved to the iconic Mann Island buildings and is now twice the size of its former location. Visit the **Walker Art Gallery** too, the national gallery of the North – ask at reception for a helpful guide to the highlights, including works by Hockney, Degas, Turner and Rembrandt.

Heritage

Like the Great Wall of China and the Pyramids of Giza, Liverpool is a UNESCO World Heritage Site. Its impressive waterfront in addition to other areas of the city centre qualified the city for this status in 2004.

Stroll around **Albert Dock** to drink in some of the history then take a trip across the Mersey on one of the river's famous **Mersey Ferries** to see the awe inspiring view of Liverpool Waterfront, one of the most recognised waterfronts in the world. Spot the iconic **Royal Liver Building** and its two much-loved, mythical **Liver Birds** that watch over the city.

Museums

Liverpool has one of the most impressive collections of museums in the country, which have free entry except for special exhibitions. Among the most exciting is the fantastic new **Museum of Liverpool**. This opened in the Summer of 2011 and has attracted unprecedented visitor numbers ever since.

Many other museums are located around the **Albert Dock**, such as the **Merseyside Maritime Museum**, where you can find out all about the companies, people and ships connected to this great port. **World Museum Liverpool** is another fascinating spot, bulging with historic treasures from around the world, with an aquarium, bug house and planetarium.

Performance

The 11,000 seat **Echo Arena Liverpool** on the waterfront is the jewel in the city's crown of fantastic venues.

Permanent performance spaces include the legendary **Playhouse theatre** which stages premieres by local and international writers, while the **Liverpool Empire** is the home of popular West End productions.

MUSIC

Not to be missed is a trip to the **Beatles Story** at **Albert Dock**, a brilliant tour through The Beatles' lives, with fascinating memorabilia and insights from friends and family. You should also pop into the **Cavern Club** on Mathew Street, the most famous club in the world, for a lunchtime beer or some live music in the evening, or visit **Mendips** and **20 Forthlin Road** in Allerton, the childhood homes of John Lennon and Sir Paul McCartney, both National Trust properties.

Classical fans must take in a performance by the world renowned **Royal Liverpool Philharmonic Orchestra**, led by the charismatic Chief Conductor and honorary Professor of the University of Liverpool, Vasily Petrenko.

SPORT

Liverpool is sport mad. It is home to two of the Premiership's biggest football teams, making football a religion in the city and a topic that is the source of much heated debate in the city's pubs. A stadium tour is a great way to discover more about these clubs.

The **Liverpool City Region** is also renowned for golf. **England's Golf Coast**, the finest stretch of championship golf in the world, is home to three **Royal Links** courses and numerous other naturally beautiful golf courses.

Visit**Liverpool**.com



SHOP

Liverpool has one of the UK's very best and smartest retail developments right in the heart of the city, **Liverpool ONE**. This is home to more than 160 famous high street names and ultra-hip fashion brands including the only Beauty Bazaar, Harvey Nichols in the country.

Liverpool also has the exclusive **Metquarter** off Whitechapel, a designer shopping centre that houses rather select names such as MAC London, L.K. Bennett, cult beauty brand Illamasqua and the fabulously British outfitters, Jack Wills. Cavern Walks off Mathew Street is home to Vivienne Westwood and celebrity favourite Cricket.

EAT & DRINK

Head to **60 Hope Street** for classic, gourmet dishes and sample its signature dessert – a deep fried jam sandwich with Carnation milk ice cream. Alternatively visit its sister restaurant, the superb pan-Asian **HOST**, or check out the highly praised Puschka, also in Liverpool's Georgian Hope Street **The Quarter** – a funky, bohemian eatery, which specialises in super-fresh, locally sourced produce.

You can also enjoy fine dining and breathtaking 360° views across the city and over to **Wirral Peninsula** from **Panoramic 34**, on the 34th floor of West Tower.



Our sense of fun and love of a great night out guarantee that the city's bars are lively and its nightlife is legendary – so much in fact that the users of TripAdvisor voted Liverpool as Britain's **Best Nightlife Destination**.

Check out **The White Bar** at Radisson Blu, **Pima** at the Hilton Liverpool or the Plum Bar at Malmaison for a sophisticated cocktail or perfectly mixed gin & tonic. **Merchant's Bar & Restaurant**, within 62 Castle Street, is another über-stylish, contemporary cocktail lounge, housed in an impressive Grade 1 listed building. Be sure to dress to impress! Alternatively, you don't need to look far to find great value, independent restaurants offering tasty, everyday fare like Kasbah, Italian Club and Kimo's, it's all here.

EXPLORE

Should you wish to escape from the bright lights and buzz of Liverpool, there are lots of award-winning beaches and coastal walks nearby, plus stunning parks, botanic gardens and countryside spas where you can blow away the cobwebs.

Head across to **Wirral Peninsula** and stride out to **Hilbre Islands Local Nature Reserve** at West Kirby, not forgetting to check the tide timetable before you go! Explore the endless sand dunes along Sefton's coast; be rejuvenated by refreshing winds as you stroll along **Southport Pier** or the **Wirral Way** with its fabulous views across to the Welsh hills. Or take a trip to the University of Liverpool's Ness Botanic Gardens and admire the views across the Dee estuary.

Gardening enthusiasts might like to learn all about wildflowers at the **National Wildflower Centre**, set in the tranquil **Victorian Court Hey Park**.

Plan your visit with *VisitLiverpool.com*

With so much to see and do in the Liverpool City Region we hope that you will take some time out to explore the many sights and attractions on offer when you visit for Open Day.

STAY IN LIVERPOOL

Why not extend your visit and check into one of our hotels or apartments? There are plenty to choose from covering all budgets including **Hope Street Hotel**, the city's first boutique hotel, the fabulous four star Beatles themed **Hard Days Night Hotel**, right by **Mathew Street** or **Bridgestreet Apartments** right in the heart of **Liverpool ONE**.

WHAT'S ON?

Visit **Tate Liverpool** for this year's blockbuster exhibition Chagall: Modern Master (8 June-6 October) or laugh your socks off at the **Liverpool Comedy Festival**. A guided tour is always a good way to learn something new and the **RIBA Liverpool City Tour** tells the story of Liverpool past, present and future through the buildings and spaces that make up the city.

And with **VisitLiverpool.com** you can book accommodation, order tickets for attractions and tours, take advantage of the special offers and even view our full events programme.

If you would like more information about any of these events or need help getting to one of the many exciting museums, eateries, bars or shopping centres come and speak with us at our stand in the Central Exhibition (see page 09/10).

Key events in 2013

- Throughout the year until October: Elvis and Us, The Beatles Story (Pier Head)
- Throughout the year until end of December: Titanic and Liverpool: The Untold Story at Merseyside Maritime Museum
- 8 June-6 October: Chagall: Modern Master at Tate Liverpool
- Throughout September: Liverpool Heritage Month
- Throughout 2013: Beatles 50, venues across the city
- Until 12 January 2014: The Drawings of Edward Burne-Jones, Lady Lever Art Gallery
- 10-20 October: Liverpool Irish Festival, venues across the city
- 26 September-6 October: Liverpool Comedy Festival, venues across the city
- Until 21 December: 20th Century Chic, Sudley House
- Until 21 September 2014: April Ashley: Portrait of a Lady, Museum of Liverpool.

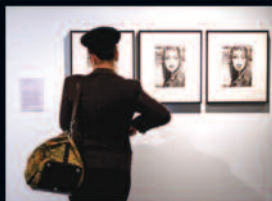
For the full events programme

VisitLiverpool.com

We look forward
to seeing you!

VisitLiverpool.com

If you love city breaks, you'll love **Liverpool**.



LIVERPOOL

Introducing a stunning collection featuring one of the best shopping cities in the UK, indulgent pampering and a legendary nightlife, plus an unbeatable music and sporting heritage.

You'll find chic hotels, fascinating museums, art galleries and the warmest of welcomes. It's all you could ask for the perfect city break. It's Liverpool.



Visit**Liverpool**.com



LIVERPOOL
CELEBRATES
50 YEARS OF
THE BEATLES



EUROPEAN UNION
Investing in Your Future
European Regional
Development Fund 2007-13

Index

A

Accounting and Finance	26
<i>see Management School</i>	
Aerospace Engineering	23
<i>see Engineering</i>	
American Studies	20
<i>see Cultures, Languages and Area Studies</i>	
Anatomy and Human Biology	25
<i>see Life Sciences</i>	
Ancient History	18
Archaeology	18
Architecture	18
Astrophysics	29
<i>see Physics</i>	

B

Biochemistry	25
<i>see Life Sciences</i>	
Biological Sciences	25
<i>see Life Sciences</i>	
Biological and Medical Sciences	25
<i>see Life Sciences</i>	
Bioveterinary Science	25
<i>see Life Sciences</i>	
Business Studies	26
<i>see Management School</i>	

C

Chemistry	19
Civic Design	30
<i>see Planning</i>	
Civil Engineering	23
<i>see Engineering</i>	
Classics and Classical Studies	19
Combined Honours	19
Communication and Media	19
Comparative American Studies	20
<i>see Cultures, Languages and Area Studies</i>	
Computer Science	20
Criminology	31
<i>see Sociology, Social Policy and Criminology</i>	
Cultures, Languages and Area Studies	20

D

Dentistry	21
Diagnostic Radiography	21, 24
<i>see also Health Sciences</i>	

E

Earth Sciences	21
Ecology and Marine Biology	22
Economics/Business Economics	26
<i>see Management School</i>	
Egyptology	22
Electrical Engineering and Electronics	22
Engineering	23
English	23
Environmental Science	23
Evolutionary Anthropology	23

F

Film Studies	20
<i>see Cultures, Languages and Area Studies</i>	
French	20
<i>see Cultures, Languages and Area Studies</i>	

G

Genetics	25
<i>see Life Sciences</i>	
Geography	24
Geology	21
<i>see Earth Sciences</i>	
Geophysics	21
<i>see Earth Sciences</i>	
German	20
<i>see Cultures, Languages and Area Studies</i>	

H

Health Sciences	24
History	24
Honours Select	25

I

Iberian and Latin American Studies	20
<i>see Cultures, Languages and Area Studies</i>	
International Business	26
<i>see Management School</i>	
Irish Studies	25
Italian	20
<i>see Cultures, Languages and Area Studies</i>	

L

Latin American Studies	20
<i>see Cultures, Languages and Area Studies</i>	
Law	25
Life Sciences	25

M	
Management School	26
Marketing	26
<i>see Management School</i>	
Marine Biology	21
<i>see Ecology and Marine Biology</i>	
Materials Engineering	23
<i>see Engineering</i>	
Mathematical Sciences	27
Mechanical Engineering	23
<i>see Engineering</i>	
Medicine	27
Microbiology	25
<i>see Life Sciences</i>	
Molecular Biology and Biotechnology	25
<i>see Life Sciences</i>	
Modern Languages	20
<i>see Cultures, Languages and Area Studies</i>	
Music	28
N	
Nursing	28, 24
<i>see also Health Sciences</i>	
O	
Occupational Therapy	28, 24
<i>see also Health Sciences</i>	
Ocean Sciences	28
Orthoptics	29, 24
<i>see also Health Sciences</i>	

P	
Pharmacology	25
<i>see Life Sciences</i>	
Philosophy	29
Physics	29
Physiology	25
<i>see Life Sciences</i>	
Physiotherapy	30, 24
<i>see also Health Sciences</i>	
Planning	30
Politics	30
Product Design	23
<i>see Engineering</i>	
Psychology	30
R	
Radiography	21, 24
<i>see Diagnostic Radiography and Health Sciences</i>	
Radiotherapy	30, 24
<i>see also Health Sciences</i>	
S	
Sociology, Social Policy and Criminology	31
Spanish	20
<i>see Cultures, Languages and Area Studies</i>	
T	
Tropical Disease Biology	25
<i>see Life Sciences</i>	
V	
Veterinary Science	31
Z	
Zoology	25
<i>see Life Sciences</i>	

Departmental activities

Open Day is a great opportunity to see for yourself what university life has to offer before you apply for admission. Our academic departments are open so you can meet current staff and students and ask any questions you may have about the University of Liverpool. Check the grid references on pages 35 and 36.

Department	Time	Location
AMERICAN STUDIES		
See Cultures, Languages and Area Studies.		
ANCIENT HISTORY		
Please drop in at any time to meet with staff and students for advice and information. You will also have the opportunity to visit the department's Garstang Museum of Archaeology and handle some of its objects.	09.30-15.30	Lecture Room 2, 9 Abercromby Square, Building No. 145 (Grid Ref: E3)
Talk: 'Studying Classics and Ancient History'.	11.00 and 13.00 (duration 30 mins)	Walbank Lecture Theatre, 12 Abercromby Square, Building No. 146 (Grid Ref: E3)
ARCHAEOLOGY		
Please drop in at any time to meet with staff and students for advice and information. You will also have the opportunity to visit the department's Garstang Museum of Archaeology and handle some of its objects.	09.30-15.30	Lecture Room 2, 9 Abercromby Square, Building No. 145 (Grid Ref: E3)
Talk: 'Studying Archaeology'.	11.30 (duration 30 mins)	Walbank Lecture Theatre, 12 Abercromby Square, Building No. 146 (Grid Ref: E3)
Talk: 'Archaeological Fieldwork and Professional Skills Training'.	12.00 (duration 30 mins)	Walbank Lecture Theatre, 12 Abercromby Square, Building No. 146 (Grid Ref: E3)
Cave Painting, Flint Knapping, Planetarium Shows: Visit our unique resources at the Central Teaching Labs, and see how these interactive activities can enhance your learning experience with us.	10.00-15.00* (duration 30 mins)	Atrium, Central Teaching Labs – 1st floor, Building No. 802 (Grid Ref: F5)
* Every effort is made to accommodate all visitors, however, please note that the planetarium can only accommodate 20 people at a time and at busy times you may have to wait.		
ARCHITECTURE		
Please drop in at any time to meet with staff and students for advice and information and to tour the facilities.	09.30-15.30	Architecture, Building No. 149 (Grid Ref: E4)
Talk: Welcome Talk and open question and answer session with staff and students.	11.50 and 13.30 (duration 30 mins)	Reilly Room, Architecture, Building No. 149 (Grid Ref: E4)

Department	Time	Location
CHEMISTRY		
Please drop in at any time to meet with staff and students for advice and information.	10.00-15.00	Central Teaching Labs – 2nd floor, Building No. 802 (Grid Ref: F5)
Talk: 'Chemistry at Liverpool'. Covering degree courses, careers and research.	11.15 and 13.15 (duration 30 mins)	Muspratt Lecture Theatre, Chemistry, Building No. 213 (Grid Ref: G5)
Staff will be available in the department for 30 minutes before and after the talk to answer any questions.	10.45-11.15, 11.45-12.15, 12.45-13.15 and 13.45-14.15	Foyer, Donnan Laboratories, Chemistry, Building No. 213 (Grid Ref: G5)
Guided tours of undergraduate laboratory facilities, conducted by current students.	10.00-15.00	Central Teaching Labs – 2nd floor, Building No. 802 (Grid Ref: F5)
CIVIC DESIGN		
See Planning.		
CLASSICS AND CLASSICAL STUDIES		
Please drop in at any time to meet with staff and students for advice and information. You will also have the opportunity to visit the department's Garstang Museum of Archaeology and handle some of its objects.	09.30-15.30	Lecture Room 2, 9 Abercromby Square, Building No. 145 (Grid Ref: E3)
Talk: 'Studying Classics and Ancient History'.	11.00 and 13.00 (duration 30 mins)	Walbank Lecture Theatre, 12 Abercromby Square, Building No. 146 (Grid Ref: E3)
COMBINED HONOURS – BA and BSc programmes		
Information desk for informal discussions and advice on any of our three programmes in Combined Honours: BA (Hons) with 2-subject first year – L000 BA (Hons) with 3-subject first year – Y001 BSc (Hons) – BCG0	10.00-15.30	Rendall Building Foyer, Building No. 432 (Grid Ref: D2)
Talk: 'Five good reasons to do a Combined Honours degree'.	13.15 and 14.00 (duration 30 mins)	Lecture Theatre 3, Rendall Building, Building No. 432 (Grid Ref: D2)
COMMUNICATION AND MEDIA		
Please drop in at any time to meet with staff and students for advice and information.	09.30-15.30	19 Abercromby Square, Building No. 148 (Grid Ref: E4)
Talk: 'Communication and Media at Liverpool' followed by a question and answer session.	12.00 and 13.45 (duration 30 mins)	Lecture Theatre 5, Rendall Building, Building No. 432 (Grid Ref: D2)



Keep up-to-date with what's happening on Open Day by following our live twitter and facebook news feeds and download our new Open Day iPhone App at <http://opendays.liv.ac.uk>

@livopenday #livopenday

www.facebook.com/livopenday

@livuni #livopenday

Department	Time	Location
COMPARATIVE AMERICAN STUDIES		
See Cultures, Languages and Area Studies.		
COMPUTER SCIENCE		
Please drop in at any time to meet with staff and students for advice and information, take a tour of the facilities and look at student demonstrations.	09.30-15.00	Computer Science, Ashton Building, Building No. 422 (Grid Ref: D7)
Talk: 'Computer Science at Liverpool'.	11.00 and 14.00 (duration 40 mins)	Ashton Building Lecture Theatre, Computer Science, Building No. 422 (Grid Ref: D7)
Talk: 'Computer Science at Liverpool: A Student's Perspective'.	12.00 (duration 30 mins)	Ashton Building Lecture Theatre, Computer Science, Building No. 422 (Grid Ref: D7)
CULTURES, LANGUAGES AND AREA STUDIES		
Please drop in at any time to meet with staff and students for advice and information, visit the language laboratories and tour the language library.	09.30-15.30	Lecture Theatre 4 and Foyer, Rendall Building, Building No. 432 (Grid Ref: D2)
Talk: 'Introduction to Cultures, Languages and Area Studies'.	10.30 (duration 20 mins)	Lecture Theatre 3, Rendall Building, Building No. 432 (Grid Ref: D2)
Talk: 'Spanish, Iberian and Latin American Studies at Liverpool'.	11.00, 12.00 and 12.30 (duration 20 mins)	At 11.00 and 12.30: Lecture Theatre 2, Rendall Building, Building No. 432 (Grid Ref: D2) At 12.00: Lecture Theatre 8, Rendall Building, Building No. 432 (Grid Ref: D2)
Talk: 'Going Places? Modern Language Careers'.	11.00 and 12.00 (duration 20 mins)	At 11.00: Lecture Theatre 5, Rendall Building, Building No. 432 (Grid Ref: D2) At 12.00: Lecture Theatre 3, Rendall Building, Building No. 432 (Grid Ref: D2)
Talk: 'French at Liverpool'.	11.15, 13.00 and 13.45 (duration 20 mins)	At 11.15: Lecture Theatre 3, Rendall Building, Building No. 432 (Grid Ref: D2) At 13.00 and 13.45: Lecture Theatre 1, Rendall Building, Building No. 432 (Grid Ref: D2)
Talk: 'Italian at Liverpool'.	11.30 (duration 20 mins)	Lecture Theatre 1, Rendall Building, Building No. 432 (Grid Ref: D2)
Talk: 'Comparative American Studies at Liverpool'.	11.45 (duration 20 mins)	Lecture Theatre 2, Rendall Building, Building No. 432 (Grid Ref: D2)
Talk: 'The Year Abroad'.	12.00 and 13.00 (duration 20 mins)	At 12.00: Lecture Theatre 7, Rendall Building, Building No. 432 (Grid Ref: D2) At 13.00: Lecture Theatre 5, Rendall Building, Building No. 432 (Grid Ref: D2)
Talk: 'German at Liverpool'.	12.15 (duration 20 mins)	Lecture Theatre 1, Rendall Building, Building No. 432 (Grid Ref: D2)
Talk: 'Film Studies at Liverpool'.	12.45 (duration 20 mins)	Lecture Theatre 7, Rendall Building, Building No. 432 (Grid Ref: D2)
Talk: 'Modern European Languages'.	13.00 (duration 20 mins)	Lecture Theatre 8, Rendall Building, Building No. 432 (Grid Ref: D2)

Department	Time	Location
DENTISTRY		
Please drop in at any time to meet with staff and students for advice and information about the BDS and Combined Diploma in Dental Hygiene and Dental Therapy programmes.	10.30-15.00	Seminar Room 1, Dental School, Building No. 322 (Grid Ref: C10)
Talk: 'Applying for Dentistry'.	11.00, 12.00 and 13.00 (duration 40 mins)	Upper Lecture Theatre, Dental School, Building No. 322 (Grid Ref: C10)
(Tickets required) Three weeks prior to the event, you will receive an email acknowledgement directing you to our e-ticket booking facility. Once booked onto a talk, please print out your e-ticket and bring this with you otherwise entry to the talk may be declined.		
Due to the large number of applicants, we regret it will not be possible to visit the School's facilities. Candidates who are invited for interview will have the opportunity to visit the School.		
DIAGNOSTIC RADIOGRAPHY		
Please drop in at any time to meet with staff and students for advice and information.	09.30-15.00	Rooms BG23 and BG24, Block B, Waterhouse Building, Building No. 352 (Grid Ref: C9) (access via Dover Street car park)
Talk: 'Training to be a Diagnostic Radiographer at the University of Liverpool' given by the Admissions Tutor.	11.00 (duration 45 mins)	Thompson Yates Lecture Theatre, Building No. 301 (Grid Ref: C8)
The Medical Imaging suite and lab will be available to visit with tours taking place every half an hour at the following times. Places are limited and therefore we are only able to accommodate the student.	10.00, 10.30, 12.15, 12.45, 13.15 and 13.45	Block B Waterhouse Building, Building No. 352 (Grid Ref: C9) (access via Dover Street car park)
(Tickets required) Three weeks prior to the event, you will receive an email acknowledgement directing you to our e-ticket booking facility. Once booked onto a tour, please print out your e-ticket and bring this with you otherwise the offer of a tour may be declined.		
Please see 'Health Sciences' (page 24) for information about additional events relevant to anyone considering a degree in Health Sciences.		
EARTH SCIENCES – GEOLOGY AND GEOPHYSICS		
Talk: 'Geology at the University of Liverpool'.	12.00 and 15.00 (duration 20 mins)	Rotblat Lecture Theatre, Chadwick Building, Building No. 207 (Grid Ref: E5/E6)
Talk: 'What is Geophysics?'	12.20 and 15.20 (duration 20 mins)	Rotblat Lecture Theatre, Chadwick Building, Building No. 207 (Grid Ref: E5/E6)
Question and answer session with staff and students.	12.40 and 15.40 (duration 20 mins)	Rotblat Lecture Theatre, Chadwick Building, Building No. 207 (Grid Ref: E5/E6)
Staff and current students will be on hand to answer your questions, show you our facilities, and demonstrate geological and geophysical techniques and equipment.	10.00-16.00	Central Teaching Labs – 1st floor, Building No. 802 (Grid Ref: F5)

Continued over



Keep up-to-date with what's happening on Open Day by following our live twitter and facebook news feeds and download our new Open Day iPhone App at <http://opendays.liv.ac.uk>

@livopenday #livopenday

www.facebook.com/livopenday

@livuni #livopenday

Department	Time	Location
EARTH SCIENCES – GEOLOGY AND GEOPHYSICS <i>(continued)</i>		
Planetarium Shows: Staff and students will give you a tour of the night sky and explain how the planetarium can be used in your learning.	10.00-15.00* (duration 30 mins)	Atrium, Central Teaching Labs – 1st floor, Building No. 802 (Grid Ref: F5)
* Every effort is made to accommodate all visitors, however, please note that the planetarium can only accommodate 20 people at a time and at busy times you may have to wait.		
ECOLOGY AND MARINE BIOLOGY		
Talk: 'Marine Biology at the University of Liverpool'.	10.00 and 13.00 (duration 20 mins)	Rotblat Lecture Theatre, Chadwick Building, Building No. 207 (Grid Ref: E5/E6)
Question and answer session with students: Marine Biology and Ocean Sciences.	10.40 and 13.40 (duration 20 mins)	Rotblat Lecture Theatre, Chadwick Building, Building No. 207 (Grid Ref: E5/E6)
Talk: 'Ecology and Environment at the University of Liverpool'.	11.20 and 14.20 (duration 20 mins)	Rotblat Lecture Theatre, Chadwick Building, Building No. 207 (Grid Ref: E5/E6)
Question and answer session with students: Ecology/Environment.	11.40 and 14.40 (duration 20 mins)	Rotblat Lecture Theatre, Chadwick Building, Building No. 207 (Grid Ref: E5/E6)
Live Marine Biology experiments.	12.00 and 15.00	Central Teaching Labs – 1st floor, Building No. 802 (Grid Ref: F5)
Live Ecology experiments.	12.40 and 15.40	Central Teaching Labs – 1st floor, Building No. 802 (Grid Ref: F5)
Staff and current students will be on hand to answer your questions.	10.00-16.00	Central Teaching Labs – 1st floor, Building No. 802 (Grid Ref: F5)
EGYPTOLOGY		
Please drop in at any time to meet with staff and students for advice and information. You will also have the opportunity to visit the department's Garstang Museum of Archaeology and handle some of its objects.	09.30-15.30	Lecture Room 2, 9 Abercromby Square, Building No. 145 (Grid Ref: E3)
Talk: 'Studying Egyptology'.	10.30 and 13.30 (duration 30 mins)	Walbank Lecture Theatre, 12 Abercromby Square, Building No. 146 (Grid Ref: E3)
Cave Painting, Flint Knapping, Planetarium Shows: Visit our unique resources at the Central Teaching Labs, and see how these interactive activities can enhance your learning experience with us.	10.00-15.00* (duration 30 mins)	Atrium, Central Teaching Labs – 1st floor, Building No. 802 (Grid Ref: F5)
* Every effort is made to accommodate all visitors, however, please note that the planetarium can only accommodate 20 people at a time and at busy times you may have to wait.		
ELECTRICAL ENGINEERING AND ELECTRONICS		
Please drop in at any time to meet with staff and students for advice and information.	09.30-14.30	Foyer, Electrical Engineering and Electronics Building, Building No. 235 (Grid Ref: E7)
Talk: 'Electrical Engineering and Electronics at Liverpool'.	12.00 (duration 45 mins)	Lecture Room E2, Electrical Engineering and Electronics Building, Building No. 235 (Grid Ref: E7)
Guided tours of the Department.	10.45, 12.45 and 14.00	Foyer, Electrical Engineering and Electronics Building, Building No. 235 (Grid Ref: E7)

Department	Time	Location
ENGINEERING – AEROSPACE, CIVIL, MATERIALS, MECHANICAL AND GENERAL ENGINEERING		
Please drop in at any time to meet with staff and students for advice and information.	09.30-14.30	Foyer, Harrison Hughes Building, Building No. 238 (Grid Ref: C7)
Talk: 'Engineering at Liverpool'.	10.45 and 13.30 (duration 40 mins)	Foyer, Harrison Hughes Building, Building No. 238 (Grid Ref: C7)
Taster Lecture: An opportunity for prospective students to experience a lecture and our innovative teaching techniques.	12.00 and 13.00 (duration 30 mins)	Foyer, Harrison Hughes Building, Building No. 238 (Grid Ref: C7)
Exhibitions and Demonstrations: Staff and students will be available throughout the day to talk to you about studying at the School of Engineering.	09.30-14.30	Foyer, Harrison Hughes Building, Building No. 238 (Grid Ref: C7)
ENGLISH		
Please drop in at any time to meet with staff and students for advice and information.	09.30-15.30	19 Abercromby Square, Building No. 148 (Grid Ref: E4)
Series of talks: Professor Siobhan Chapman, Head of English will give an informal talk. This will be followed by two short sample lectures from members of staff. There will also be a short Q&A session.	11.00 and 14.25 (duration 50 mins)	Lecture Theatre 7, Rendall Building, Building No. 432 (Grid Ref: D2)
ENVIRONMENTAL SCIENCE		
Please drop in to meet with staff and students for advice and information.	09.30-10.00 and 12.30-13.00	Foyer, Roxby Building, Building No. 107 (Grid Ref: E2)
Talk: 'Environmental Science at the University of Liverpool'.	11.00 and 14.00 (duration 20 mins)	Rotblat Lecture Theatre, Chadwick Building, Building No. 207 (Grid Ref: E5/E6)
Environmental Science Demonstrations.	11.30 and 14.30 (duration 30 mins)	Central Teaching Labs – 1st floor, Building No. 802 (Grid Ref: F5)
Environmental Science drop in question and answer session with staff and students.	12.00-12.30 and 15.00-15.30 (drop in anytime)	Central Teaching Labs – 1st floor, Building No. 802 (Grid Ref: F5)
Planetarium Shows: Staff and students will give you a tour of the night sky and explain how the planetarium can be used in your learning.	10.00-15.00* (duration 30 mins)	Atrium, Central Teaching Labs – 1st floor, Building No. 802 (Grid Ref: F5)
* Every effort is made to accommodate all visitors, however, please note that the planetarium can only accommodate 20 people at a time and at busy times you may have to wait.		
EVOLUTIONARY ANTHROPOLOGY		
Please drop in at any time to meet with staff and students for advice and information. You will also have the opportunity to visit the department's Garstang Museum of Archaeology and handle some of its objects.	09.30-15.30	Lecture Room 2, 9 Abercromby Square, Building No. 145 (Grid Ref: E3)
Talk: 'Studying Evolutionary Anthropology'.	12.30 (duration 30 mins)	Walbank Lecture Theatre, 12 Abercromby Square, Building No. 146 (Grid Ref: E3)



Keep up-to-date with what's happening on Open Day by following our live twitter and facebook news feeds and download our new Open Day iPhone App at <http://opendays.liv.ac.uk>

@livopenday #livopenday

www.facebook.com/livopenday

@livuni #livopenday

Department	Time	Location
FILM STUDIES		
See Cultures, Languages and Area Studies.		
FRENCH		
See Cultures, Languages and Area Studies.		
GEOGRAPHY		
Please drop in to meet with staff and students for advice and information.	09.30-10.00 and 12.30-13.00	Foyer, Roxby Building, Building No. 107 (Grid Ref: E2)
Talk: 'Geography at the University of Liverpool'.	10.00 and 13.10 (duration 40 mins)	Lecture Theatre 7, Rendall Building, Building No. 432 (Grid Ref: D2)
Geography Demonstrations.	11.00 and 14.00 (duration 60 mins)	Central Teaching Labs – 1st floor, Building No. 802 (Grid Ref: F5)
Geography drop in question and answer session with staff and students.	12.00-12.30 and 15.00-15.30 (drop in anytime)	Central Teaching Labs – 1st floor, Building No. 802 (Grid Ref: F5)
GERMAN		
See Cultures, Languages and Area Studies.		
HEALTH SCIENCES		
Admissions Tutors, including the Head of the Institute of Learning and Teaching, Miss Eileen Thornton, CBE and students from Diagnostic Radiography, Nursing, Occupational Therapy, Orthoptics, Physiotherapy and Radiotherapy will be available to answer individual questions.	09.30-15.00	Block B, Ground Floor, Waterhouse Building, Building No. 352 (Grid Ref: C9) (access via Dover Street car park)
Foundation to Health Studies (Year 0) programme		
Please drop in at any time to meet with staff and students for advice and information. This is a unique opportunity to study on a one-year programme specifically designed for progression, on successful completion, to the Allied Health Professions and Nursing undergraduate programmes.	09.30-15.00	Block B, Waterhouse Building, Building No. 352 (Grid Ref: C9) (access via Dover Street car park)
Talk: 'Financial support for Allied Health and Nursing professions'.	09.30 * (duration 40 mins)	Thompson Yates Lecture Theatre, Thompson Yates Building, Building No. 301 (Grid Ref: C8)
* Unfortunately to avoid disruption for other attendees, admittance to this talk will not be allowed after 9.35am.		
Talk: 'Make your UCAS application the best – the guide to completing the UCAS form' (Pre-recorded presentation).	10.30, 12.00 and 13.00 (duration 15 mins)	Room 119, Thompson Yates Building, Building No. 301 (Grid Ref: C8)
Talk: 'Health Sciences at the University of Liverpool courses and careers' (Rolling DVD).	09.30-15.00 (except for pre-recorded presentation times)	Room 119, Thompson Yates Building, Building No. 301 (Grid Ref: C8)
HISTORY		
Please drop in at any time to meet with staff and students for advice and information.	09.30-15.30	Lecture Room 1, 9 Abercromby Square, Building No. 145 (Grid Ref: E3)
Talk: 'History at Liverpool'.	11.45, 13.15 and 14.45 (duration 30 mins)	Lecture Theatre 6, Rendall Building, Building No. 432 (Grid Ref: D2)

Department	Time	Location
HONOURS SELECT		
Please drop in at any time to meet with staff to discuss 'Honours Select' options.	10.00-16.00	Foyer, Rendall Building, Building No. 432 (Grid Ref: D2)
IBERIAN AND LATIN AMERICAN STUDIES		
See Cultures, Languages and Area Studies.		
IRISH STUDIES		
Please drop in at any time to meet with staff and students for advice and information.	09.30-15.30	Seminar Room 4, 9 Abercromby Square, Building No. 145 (Grid Ref: E3)
Talk: 'Irish Studies at Liverpool'.	11.30 and 13.00 (duration 30 mins)	Seminar Room 2, 9 Abercromby Square, Building No. 145 (Grid Ref: E3)
ITALIAN		
See Cultures, Languages and Area Studies.		
LAW		
Please drop in at any time to meet with staff and students for advice and information. This will include the chance to meet Law School Student Ambassadors, members of the Student Legal Society, Bar Society, Pro Bono Society and the Law Librarian.	10.00-15.00	Main Foyer, Liverpool Law School, Building No. 120 (Grid Ref: E2)
Talk: 'Studying Law: In Conversation' an interactive question and answer session with staff, Law students and the Director of Undergraduate Recruitment.	11.00 and 12.30 (duration 45 mins)	The Moot Room, Liverpool Law School, Building No. 120 (Grid Ref: E2)
LIFE SCIENCES		
Biochemistry, Biological and Medical Sciences, Biological Sciences, Bioveterinary Science, Genetics, Microbiology, Molecular Biology and Biotechnology, Tropical Disease Biology, Zoology. See separate sections below for Anatomy and Human Biology, Pharmacology and Physiology		
Information on the programmes, careers and admissions. Demonstrations and hands-on activities.	10.00-15.00	The Life Sciences Building, Building No. 215 (Grid Ref: F8)
Tour of the School of Life Sciences.	13.30 (duration 15 mins)	The Life Sciences Building, Building No. 215 (Grid Ref: F8)
Talk: 'Studying for a degree in the Life Sciences at Liverpool' Professor Alan McCarthy.	10.30 and 12.00 (duration 30 mins)	The Life Sciences Building, Building No. 215 (Grid Ref: F8)
Bioveterinary Science		
Talk: 'Studying Bioveterinary Science at Liverpool'.	11.30 and 13.00 (duration 15 mins)	The Life Sciences Building, Building No. 215 (Grid Ref: F8)
Anatomy and Human Biology		
Talk: 'Studying Anatomy at Liverpool' Dr Y Allen.	11.10, 12.10 and 13.10 (15 mins talk followed by 5 mins Q&A)	The Life Sciences Building, Building No. 215 (Grid Ref: F8)

Continued over



Keep up-to-date with what's happening on Open Day by following our live twitter and facebook news feeds and download our new Open Day iPhone App at <http://opendays.liv.ac.uk>

@livopenday #livopenday

www.facebook.com/livopenday

@livuni #livopenday

Department	Time	Location
LIFE SCIENCES <i>(continued)</i>		
Information desk for advice on applying to the BSc (Hons) Anatomy and Human Biology.	10.30-15.00	The Life Sciences Building, Building No. 215 (Grid Ref: F8)
Pharmacology		
Talk: 'Studying Pharmacology at Liverpool' Dr I G Edwards.	10.50, 11.50 and 12.50 (15 mins talk followed by 5 mins Q&A)	The Life Sciences Building, Building No. 215 (Grid Ref: F8)
Information desk for advice on applying to the BSc (Hons) Pharmacology.	10.30-15.00	The Life Sciences Building, Building No. 215 (Grid Ref: F8)
Physiology		
Talk: 'Studying Physiology at Liverpool' Dr T L Gleave, Physiology Admissions Tutor.	10.30, 11.30 and 12.30 (15 mins talk followed by 5 mins Q&A)	The Life Sciences Building, Building No. 215 (Grid Ref: F8)
Information desk for advice on applying to the BSc (Hons) Physiology.	10.30-15.00	The Life Sciences Building, Building No. 215 (Grid Ref: F8)
MANAGEMENT SCHOOL		
Exhibition		
Staff and students will be available throughout the day to welcome you and chat on a one-to-one basis about studying at the Management School. The exhibition will include information on the following: – degree courses – a year in industry – overseas study exchange – extra-curricular activities – career prospects.	10.00-15.30	Main Foyer, Management School, Building No. 427 (Grid Ref: F2)
Talk: 'Management School overview'. General information about the School and its provision.	10.00, 11.30 and 13.30 (duration 40 mins)	Barkla Lecture Theatre, Chadwick Building, Building No. 207 (Grid Ref: E5/E6)
Programme Talks		
Detailed information about the content and structure (including the year in industry) of the School's individual degree programmes (duration 50 mins).		
Talk: 'Business Studies'.	10.30 and 14.30	Chadwick Lecture Theatre, Chadwick Building, Building No. 207 (Grid Ref: E5/E6)
(Tickets required) Due to demand please note that the Business Studies programme talks are ticketed events. Once you register for Open Day, you will receive an email acknowledgement directing you to our e-ticket booking facility. Please print out your e-ticket and bring it with you to ensure entry.		
Talk: 'International Business'.	11.30	Chadwick Lecture Theatre, Chadwick Building, Building No. 207 (Grid Ref: E5/E6)
Talk: 'Accounting and Finance'.	12.30	Chadwick Lecture Theatre, Chadwick Building, Building No. 207 (Grid Ref: E5/E6)
Talk: 'Marketing'.	13.30	Chadwick Lecture Theatre, Chadwick Building, Building No. 207 (Grid Ref: E5/E6)
Talk: 'Economics/Business Economics'.	14.30	Seminar Room 5, Management School, Building No. 427 (Grid Ref: F2)

Continued over

Department	Time	Location
MANAGEMENT SCHOOL <i>(continued)</i>		
Talk: 'The Management School Student Experience'. Hear first-hand from current undergraduates about all aspects of student life at the Management School.	12.30 and 13.30 (duration 30 mins)	Seminar Room 5, Management School, Building No. 427 (Grid Ref: F2)
Interactive activity for prospective students		
An opportunity for prospective students to experience one of the innovative teaching techniques used in the Management School. Parents/guardians are welcome to join us at our drop in session in the Management School cafe.	11.30 and 13.30 (duration 1 hour)	Committee Room 2, Management School, Building No. 427 (Grid Ref: F2)
(Tickets required) Once you register for Open Day, you will receive an email acknowledgement directing you to our e-ticket booking facility. This is a popular activity so please print out your e-ticket and bring this with you to ensure your place.		
Drop-in session for parents/guardians		
An opportunity for parents/guardians to meet informally with staff/students to discuss the Management School's support for students over refreshments.	11.30 and 13.30	Cafe, Management School, Building No. 427 (Grid Ref: F2)
MATHEMATICAL SCIENCES		
Please drop in at any time to meet staff and students for advice and information.	10.00-14.00	Mathematical Sciences, Building No. 206 (Grid Ref: E6)
Talk: 'Why study Maths at University?'	10.15 and 12.30 (duration 30 mins)	Mathematical Sciences, Building No. 206 (Grid Ref: E6)
Exhibition Room: See demonstrations of some amazing maths and its application to real-world problems.	10.00-14.00	Mathematical Sciences, Building No. 206 (Grid Ref: E6)
Fun Maths Roadshow.	10.00-13.00	Mathematical Sciences, Building No. 206 (Grid Ref: E6)
MEDICINE		
Please drop in at any time to meet with staff and students for advice and information.	10.00-16.00	Foyer, Sherrington Building, Building No. 311 (Grid Ref: D9)
Unfortunately, the School of Medicine buildings are unable to accommodate the overwhelming number of visitors interested in our programmes. Due to the large number of applicants, we regret it will not be possible to visit the medical facilities. Candidates who are invited for interview will have the opportunity to visit the School.		
Talk: 'Applying for Medicine' followed by a question and answer session.	10.30 and 14.00 (duration 90 mins)	Lecture Theatre 2, Sherrington Building, Building No. 311 (Grid Ref: D9)
(Tickets required) Three weeks prior to the event, you will receive an email acknowledgement directing you to our e-ticket booking facility. Once booked onto a talk, please print out your e-ticket and bring this with you, otherwise entry to the talk may be declined.		
MODERN LANGUAGES		
See Cultures, Languages and Area Studies.		



Keep up-to-date with what's happening on Open Day by following our live twitter and facebook news feeds and download our new Open Day iPhone App at <http://opendays.liv.ac.uk>

@livopenday #livopenday

www.facebook.com/livopenday

@livuni #livopenday

Department	Time	Location
MUSIC		
Please drop in at any time to meet staff and students for advice and information and take a tour of the facilities.	09.30-15.30	Music, Building No. 104 (Grid Ref: D3)
Talk: 'Studying Music at Liverpool'.	11.00 and 14.00 (duration 45 mins)	Lecture Theatre 8, Rendall Building, Building No. 432 (Grid Ref: D2)
Demonstrations and workshops.	12.00-14.00	Music, Building No. 104 (Grid Ref: D3)
NURSING		
Please drop in at any time to meet staff and students for advice and information. This will include information on entry requirements and the theoretical and clinical components of the course. Students will also be available to talk about any aspect of the course including their experiences of their elective overseas placement.	09.30-15.00	Block B, Waterhouse Building, Building No. 352 (Grid Ref: C9) (access via Dover Street car park)
Talk: 'Nursing at Liverpool'.	11.45 (duration 45 mins)	Thompson Yates Lecture Theatre, Thompson Yates Building, Building No. 301 (Grid Ref: C8)
Please see 'Health Sciences' (page 24) for information about additional events relevant to anyone considering a degree in Health Sciences.		
OCCUPATIONAL THERAPY		
Please drop in at any time to meet staff and students for advice and information.	09.30-15.00	Rooms BG11 and BG12, Block B, Waterhouse Building, Building No. 352 (Grid Ref: C9) (access via Dover Street car park)
Talk: 'Occupational Therapy at the University of Liverpool' given by a member of the Occupational Therapy teaching team.	12.30 (duration 45 mins)	Thompson Yates Lecture Theatre, Thompson Yates Building, Building No. 301 (Grid Ref: C8)
Case Presentations		
An opportunity to hear how Occupational Therapy changes lives from the perspective of service users and/or students.	13.30 (duration 1.5 hours)	Block B, Waterhouse Building, Building No. 352 (Grid Ref: C9) (access via Dover Street car park)
(Tickets required) Three weeks prior to the event, you will receive an email acknowledgement directing you to our e-ticket booking facility. Once booked onto a talk, please print out your e-ticket and bring this with you otherwise entry to the talk may be declined.		
Please see 'Health Sciences' (page 24) for information about additional events relevant to anyone considering a degree in Health Sciences.		
OCEAN SCIENCES		
Talk: 'Ocean Sciences at the University of Liverpool'.	10.20 and 13.20 (duration 20 mins)	Rotblat Lecture Theatre, Chadwick Building, Building No. 207 (Grid Ref: E5/E6)
Question and answer session with staff and students: Ocean Sciences and Marine Biology.	10.40 and 13.40 (duration 20 mins)	Rotblat Lecture Theatre, Chadwick Building, Building No. 207 (Grid Ref: E5/E6)
Live Ocean Sciences experiments.	12.20 and 15.20	Central Teaching Labs – 1st floor, Building No. 802 (Grid Ref: F5)
Staff and current students will be on hand to answer your questions, show you our facilities, and demonstrate oceanographic principles, techniques and equipment.	10.00-16.00	Central Teaching Labs – 1st floor, Building No. 802 (Grid Ref: F5)

Department	Time	Location
ORTHOPTICS		
Please drop in at any time to meet with staff and students for advice and information. There will also be an opportunity to gain first-hand experience of the clinical tests undertaken by Orthoptist students and gain their perspective on being a student at Liverpool.	09.30-15.00	G08 Thompson Yates Building, Building No. 301 (Grid Ref: C8)
Talk: 'The Science of Seeing' given by an academic member of staff.	10.00, 11.30 and 13.00 (duration 25 mins)	G20, Ground Floor, Thompson Yates Building, Building No. 301 (Grid Ref: C8)
Talk: Applying for Orthoptics at Liverpool – a talk by the admissions tutor covering the frequently asked questions.	10.30 (duration 30 mins)	G20, Ground Floor, Thompson Yates Building, Building No. 301 (Grid Ref: C8)
Admissions advice drop in: The admissions tutor will be available for one to one advice on applying for Orthoptics.	11.00-13.00	Room G12, Ground Floor, Thompson Yates Building, Building No. 301 (Grid Ref: C8)
Please see 'Health Sciences' (page 24) for information about additional events relevant to anyone considering a degree in Health Sciences.		
PHILOSOPHY		
Please drop in at any time to meet with staff and students for advice and information, with philosophical puzzles and films.	09.30-15.30	19 Abercromby Square, Building No. 148 (Grid Ref: E4)
Series of talks: Find out 'What is Philosophy?' a short introduction to the idea of Philosophy, experience a 'Taster Lecture' first-hand, find out about 'Studying Philosophy at Liverpool' and listen to current Philosophy undergraduate students talk about 'What it's really like' on their course and life as a student in Liverpool. There will also be a short Q&A session.	09.45 and 13.30 (duration 1 hour 15 mins)	Lecture Theatre 2, Rendall Building, Building No. 432 (Grid Ref: D2)
PHYSICS		
Please drop in at any time to meet with staff and students for advice and information.	10.30-16.00	Ground Floor, Central Teaching Labs, Building No. 802 (Grid Ref: F6)
Talk: 'Physics at Liverpool' presentation by Admissions Tutors.	11.00, 13.00 and 15.00 (duration 45 mins)	Ground Floor, Central Teaching Labs, Building No. 802 (Grid Ref: F6)
Tour of Physics Labs with students.	11.45 and 13.45	Ground Floor, Central Teaching Labs, Building No. 802 (Grid Ref: F6)
Planetarium Shows: Staff and students will give you a tour of the night sky and explain how the planetarium can be used in your learning.	10.00-15.00* (duration 30 mins)	Atrium, Central Teaching Labs – 1st floor, Building No. 802 (Grid Ref: F5)
* Every effort is made to accommodate all visitors, however, please note that the planetarium can only accommodate 20 people at a time and at busy times you may have to wait.		



Department	Time	Location
PHYSIOTHERAPY		
Please drop in at any time to meet with staff and students for advice and information.	09.30-15.00	M05, Thompson Yates Building, Building No. 301 (Grid Ref: C8)
Talk: 'Application to Graduation'.	10.15 and 13.15 (duration 45 mins)	Thompson Yates Lecture Theatre, Thompson Yates Building, Building No. 301 (Grid Ref: C8)
(Tickets required) Three weeks prior to the event, you will receive an email acknowledgement directing you to our e-ticket booking facility. Once booked onto a talk, please print out your e-ticket and bring this with you otherwise entry to the talk may be declined.		
Please see 'Health Sciences' (page 24) for information about additional events relevant to anyone considering a degree in Health Sciences.		
PLANNING		
Talk: 'Planning: A Career?'	11.00 and 14.00 (duration 30 mins)	Lecture Theatre 1, Gordon Stephenson Building, Building No. 109 (Grid Ref: D3)
Tour of facilities.	11.45 and 12.45 (duration 15 mins)	Lecture Theatre 1, Gordon Stephenson Building, Building No. 109 (Grid Ref: D3)
Civic Design Exhibition and the opportunity to ask staff and students any questions you have about the department and the courses that we offer.	10.00-14.00	Studio, Ground Floor, Gordon Stephenson Building, Building No. 109 (Grid Ref: D3)
POLITICS		
Please drop in at any time to meet with staff and students for advice and information.	10.30-15.30	Seminar Room 1, 9 Abercromby Square, Building No. 145 (Grid Ref: E3)
Talk: 'Politics at Liverpool'.	11.00, 12.30 and 14.00 (duration 30 mins)	Lecture Theatre 6, Rendall Building, Building No. 432 (Grid Ref: D2)
PSYCHOLOGY		
Please drop in at any time to meet with staff and students for advice and information and to look at examples of student research.	09.30-14.30	Foyer, Eleanor Rathbone Building, Building No. 106 (Grid Ref: D2)
Talk: 'Psychology at the University'.	10.30 and 13.00 (duration 30 mins)	Eleanor Rathbone Theatre Eleanor Rathbone Building, Building No. 106 (Grid Ref: D2)
Talk: 'Sample lecture'.	11.00 and 13.30 (duration 20 mins)	Eleanor Rathbone Theatre, Eleanor Rathbone Building, Building No. 106 (Grid Ref: D2)
NB Unfortunately individual tours around the School's experimental laboratories will not be possible, however, these will be available if you choose to attend one of our post application visit days.		
RADIOTHERAPY		
Please drop in at any time to meet with staff and students for advice and information.	09.30-15.00	Room BG08, Block B, Waterhouse Building, Building No. 352 (Grid Ref: C9) (access via Dover Street car park)
Talk: 'Training to be a Therapy Radiographer at Liverpool' given by the Admissions Tutor.	10.00 (duration 1 hour)	Room BG08, Block B, Waterhouse Building, Building No. 352 (Grid Ref: C9) (access via Dover Street car park)
The VERT (Virtual Environment for Radiotherapy) facility will be available to visit between 09.30 and 15.00 (but not during the talk).	09.30-15.00	Room BG08, Block B, Waterhouse Building, Building No. 352 (Grid Ref: C9) (access via Dover Street car park)
Please see 'Health Sciences' (page 24) for information about additional events relevant to anyone considering a degree in Health Sciences.		

Department	Time	Location
SOCIOLOGY, SOCIAL POLICY AND CRIMINOLOGY		
Please drop in at any time to meet with staff and students for advice and information.	10.00-15.00	Main Foyer, Eleanor Rathbone Building, Building No. 106 (Grid Ref: D2)
Talk: 'Studying Sociology, Criminology and Social Policy: Why study here with us?' Including a question and answer session.	11.00 and 13.00 (duration 50 mins)	Hearnshaw Lecture Theatre, Eleanor Rathbone Building, Building No. 106 (Grid Ref: D2)
SPANISH		
See Cultures, Languages and Area Studies.		
VETERINARY SCIENCE		
Numbers are restricted due to high demand and space constraints. You must first register for the University Open Day at www.liverpool.ac.uk/openday and express an interest in BVSc Veterinary Science. This process will then provide you with a link to the online booking system. Online booking for the Veterinary specific events opens approximately three weeks prior to each Open Day.		
Talk: This talk focuses on how the course is taught, and details the admissions process. (Tickets required – see above)	10.00, 12.00 and 14.30 (duration 45 minutes including Q&A)	Lecture Theatre B, Central Teaching Hub, Building No. 221 (Grid Ref: F6)
Coach Trip to Leahurst		
This is a two-hour round trip (45 mins travel each way) and includes a tour of the Leahurst campus and the hospitals. (Tickets required – see above)	09.00, 10.00, 11.00, 12.00, 13.00 and 14.00	Depart outside Electrical Engineering and Electronics, Building No. 235 (Grid Ref: E7) on Brownlow Hill
NB Leahurst contains working hospitals. For reasons of patient welfare, biosecurity, and in order to allow as many applicants to see the hospital facilities, this coach trip is restricted to applicants only and visitors cannot visit Leahurst independently.		
Interactive Activities		
Test your knowledge and clinical skills at our interactive stands.	All day	VTS, Great Newton Street, Building No. 401 (Grid Ref: B8)
Refreshments/Meet Staff and Students		
Join our staff and students for a chat with refreshments provided.	All day	Vet School Home, Thompson Yates Building, Building No. 301 (Grid Ref: C8)
Admissions Clinic		
Our Admissions Team will be available to answer any questions about the admissions process. Please attend the admissions talk before visiting this clinic as many questions will be answered there.	All day	Vet School Home, Thompson Yates Building, Building No. 301 (Grid Ref: C8)



Keep up-to-date with what's happening on Open Day by following our live twitter and facebook news feeds and download our new Open Day iPhone App at <http://opendays.liv.ac.uk>

@livopenday #livopenday

www.facebook.com/livopenday

@livuni #livopenday

Places to eat on campus...

There are plenty of places to eat and drink during your day at Liverpool. The table below shows details of all the on-campus refreshment establishments, so you can refuel and plan your next activity. Check the building numbers in the last column of the table and use the campus map on page 35 to locate the most convenient place for you.

Outlet Name	Opening Times	Facilities/Services	Location
Sydney Jones Library Cafe	09.00-15.00	Proudly serving Starbucks Coffee, including traditional Lattes, Cappuccinos and Teas. A wide range of hot snacks, freshly prepared sandwiches and delicious homemade cakes are available.	Sydney Jones Library, Building No. 433 (Grid Ref: F3)
Liv2eat Restaurant	09.00-16.00	Serving a delicious range of breakfast items such as a traditional 'Full English', warm pastries and a Continental style buffet. Or join us for lunch and sample our diverse range of dishes from freshly prepared salads to mouth-watering desserts. A selection of hot and cold drinks are also available.	Vine Court Hall of Residence, Chatham Street, Building No. 804 (Grid Ref: F1)
Vine Court Cafe Bar	09.00-16.00	Relax in our Continental style cafe. Enjoy our range of bottled beers, wines, soft drinks, authentic coffee, speciality teas, tasty sandwiches and paninis. If you are in a hurry why not 'grab and go' from our take-away range.	Vine Court Hall of Residence, Chatham Street, Building No. 804 (Grid Ref: F1)
The Waterhouse Cafe, Victoria Gallery and Museum	08.30-16.00	The Waterhouse cafe provides a stunning backdrop of Victorian architecture, serving fresh locally produced food. The cafe offers a range of hot breakfast items, a varied lunchtime menu, delicious cakes and desserts, traditional coffees, teas and a selection of bottled beers and wines.	Victoria Gallery and Museum, Building No. 421 (Grid Ref: D7)
Catering Kiosks on University Square and Guild Walk	09.00-15.00	Join in the atmosphere on University Square at the heart of the campus and taste the flavours of our 'Street Food' BBQ, delicious pasta, traditional coffees, teas, soft drinks and much, much more.	Guild Walk, University Square (Grid Ref: D7)
Cafe on the Square	08.00-16.00	We look forward to welcoming you to our brand new cafe located on central campus. Offering a wide range of food and drink options such as hot breakfast items, traditional coffees, 'grab and go' items, delicious soups, freshly prepared salads, jacket potatoes, snacks, cakes and confectionery.	Above Blackwells Bookshop, University Square, Building No. 750 (Grid Ref: E7)

Continued over

Outlet Name	Opening Times	Facilities/ Services	Location
The Guild Cafe, Guild of Students	08.30-15.30	Great choice of Fairtrade teas, coffees and snacks. Breakfast items, paninis and soft drinks also available.	Guild of Students, 5 Abercromby Square, Building No. 503 (Grid Ref: D3/D4)
The Guild Shop, Guild of Students Courtyard	08.30-15.30	Stocks a wide range of sandwiches, snacks and University branded merchandise, including ranges of Fairtrade and ethically sourced products.	Guild of Students, entrance opposite the Metropolitan Cathedral, Building No. 501 and 502 (Grid Ref: D6)
The Guild Dining Room, Guild of Students	10.00-15.00	Bar service menu offering a wide range of hot meals, cooked to order including vegetarian options, salads and snacks. Menu contains many items that are locally sourced and grown in the guild's own roof garden.	Guild of Students, 5 Abercromby Square, Building No. 503 (Grid Ref: D3/D4)
Augustus John Public House	11.00-19.00	CAMRA Good Beer Guide recommended. Full bar service available including locally produced ales, real ciders and a wide range of soft drinks. Bar snacks, sandwiches and tasty Chicago Town pizza served all day.	Building No. 750, University Square (Grid Ref: E7, behind Blackwells Bookshop)
Madison's Cafe	08.30-16.00	Serving authentic Costa coffee and tea in our bright and spacious cafe. For breakfast we offer warm Danish pastries, croissants, toast and preserve and hot savoury options. For lunch we serve hot tasty snacks, fresh sandwiches and a range of salads. Delicious homemade cakes available.	Sherrington Building, Ashton Street, Building No. 311 (Grid Ref: D9)
Management School Cafe	09.00-15.00	Serving a diverse breakfast range, lunch options and sweet treats.	Management School, Chatham Building, Building No. 427 (Grid Ref: F2)
Foyer, University Lecture Rooms Building	All day	A quick stop for a range of hot and cold drinks, confectionary and snacks all available from vending machines.	University Lecture Rooms Building, Building No. 221 (Grid Ref: F6)
Roscoe and Gladstone Dining Room and Carnatic House Bar	10.00-15.00	A wide range of hot and cold drinks with biscuits and cakes is available.	Halls of Residence



How to find us

DIRECTIONS

For directions on how to find the main campus by road, rail, coach, ferry and air please refer to the University of Liverpool website www.liverpool.ac.uk/study/openday/getting-here.htm

CAR PARKING

Please note that unfortunately there is no Open Day Parking. There are a limited number of visitor car parks, offering a small number of spaces but parking on campus is severely restricted. Please see the website for information on which visitor car parks will be available on the open day you will be attending.

We advise that visitors use public transport wherever possible – the University campus is a short walk from Liverpool Lime Street station and the National Express coach station. If arriving by train, look out for our student ambassadors based at Lime Street station who will direct you to the University campus.

If arriving by car we strongly recommend that visitors use city centre car parks, details of which can be found on the City Map on page 38. The nearest NCP car park is Mount Pleasant, L3 5SD. Parking is also available adjacent to the Adelphi Hotel, Brownlow Hill, L3 5UL.

FACILITIES FOR DISABLED VISITORS

If you have any mobility or disability issues which require special arrangements with regard to Open Day tours, car parking, building access etc please contact a member of the Events Team on E: openday@liverpool.ac.uk or T: +44 (0)151 794 5832







campus map

Campus map key

For specific Open Day activities please refer to the map grid reference listed in the Departmental Activities on pages 18-31.

Accommodation Office	502
Alumni and Development Office	765
Archaeology, Classics and Egyptology	145, 146, 147, 253 (Grid Ref: E3/B8)
Architecture	149 (Grid Ref: E4)
Archive Studies	144
Ashton Building	422 (Grid Ref: D7)
Bedford House	505
Biological Sciences	215, 216
Biomedical Sciences	312, 313, 315
Blackwell Bookshop	750
Brodie Tower	233
Business Gateway	354
Cancer Research Centre	329
Careers and Employability Service	502
Central Teaching Laboratory	802
Centre for Lifelong Learning	114
Cedar House	360
Chadwick Building	207 (Grid Ref: E5/E6)
Chatham Building	425 (Grid Ref: F2)
Chemistry	213 (Grid Ref: G5)
Children's Centre	507 (Grid Ref: G5)
Civic Design	109 (Grid Ref: D3)
Combined Honours	432 (Grid Ref: D2)
Communication and Media	432 (Grid Ref: D2)
Computer Laboratory	224
Computer Science	231, 422 (Grid Ref: D8/D7)
Confucius Institute	114
Continuing Professional Development (CPD)	354
Counselling Service	436
Cultures, Languages and Area Studies (German, French, Italian, Hispanic)	108 (Grid Ref: E2)
Cypress Building	108 (Grid Ref: E2)
Dental Hospital	322 (Grid Ref: C10)
Dental School	322 (Grid Ref: C10)
Derby Building	252 (Grid Ref: B8)
Duncan Building	315
Earth, Ocean and Ecological Sciences	201, 203 (Grid Ref: B9)
Educational Opportunities	421
Edwards Building	321
Eleanor Rathbone Building	106 (Grid Ref: D2)
Electrical Engineering and Electronics	235 (Grid Ref: E7)
Energy Centre	314

Engineering	
– Active Learning Laboratory	
– Aerospace Engineering	
– Civil Engineering	
– Design and Manufacturing	
– Materials Engineering	
– Mechanical Engineering	238 (Grid Ref: C7)
English	108 (Grid Ref: E2)
English Language Unit	108
Foresight Centre (Block J)	359
Foundation Building	765
Garstang Museum	147 (Grid Ref: E3)
Geography	107, 148 (Grid Ref: E2/E4)
George Holt Building	231
Gordon Stephenson Building	109 (Grid Ref: D3)
Guild of Students	501, 502 (Grid Ref: D6)
Guild of Students (Temporarily)	503 (Grid Ref: D3/D4)
Harrison Hughes Building	238 (Grid Ref: C7)
Harold Cohen Library	431 (Grid Ref: D8)
Hart Building	766 (Grid Ref: D6)
Hartley Building	253
Health Sciences (Water Building B)	352 (Grid Ref: C9)
History	144 (Grid Ref: E3)
International Recruitment and Relations Team	765
Irish Studies, Institute of	145 (Grid Ref: E3)
Jane Herdman Building	201 (Grid Ref: B9)
Johnston Building	304
Jones Building	303
Latin America Studies	108, 432 (Grid Ref: E2/D2)
Law	120 (Grid Ref: E2)
Liverpool International College	148, 152
Life Sciences Building	215 (Grid Ref: F8)
Liverpool Student Homes	776
Management School (ULMS)	427 (Grid Ref: F2)
Mathematical Sciences	206 (Grid Ref: E6)
Medical School	311 (Grid Ref: D9)
Melville Grove Halls of Residence	679
Mount Pleasant	126, 114
Mount Pleasant	128, 776
Mountford Hall	501 (Grid Ref: D6)
Mulberry Court Halls of Residence	670
Muslim Prayer Room	433
Music	104 (Grid Ref: D3)

Muspratt Building	232
National Oceanography Centre	259 (Grid Ref: B9)
Nicholson Building	203 (Grid Ref: B9)
No. 5 Bistro	503
Nuclear Magnetic Resonance Centre	214
Oliver Lodge Laboratory	208 (Grid Ref: F4)
Halls of Residence	655
Philosophy	143 (Grid Ref: D3)
Physics	208, 802 (Grid Ref: F4/F5)
Politics	107 (Grid Ref: E2)
Popular Music, Institute of	104 (Grid Ref: D3)
Psychology	106 (Grid Ref: D2)
Public Health	302
Rendall Building	432 (Grid Ref: D2)
Royal Liverpool University Hospital	(RLUH) 316
Roxby Building	107 (Grid Ref: E2)
Sherrington Building	311 (Grid Ref: D9)
Sir Alistair Pilkington Building	152 (Grid Ref: D2)
Sociology and Social Policy	106 (Grid Ref: D2)
Sports and Fitness Centre	511 (Grid Ref: D4/D5)
Student Administration Centre	765
Student Health Service	502, 358 (Grid Ref: D5/C10)
Student Recruitment and Admissions Office	765
Student Services Centre	502 (Grid Ref: D5)
Students' Union	501, 502 (Grid Ref: D6)
Sydney Jones Library	433 (Grid Ref: F3)
Thompson Yates Building	301 (Grid Ref: C8)
Tropical Medicine, School of	346
Tudor Close Halls of Residence	675
University Lecture Rooms Building (ULRB)	221 (Grid Ref: F6)
Veterinary Science	301 (Grid Ref: C8)
Veterinary Teaching Suite	401 (Grid Ref: B8)
Victoria Building	421 (Grid Ref: D7)
Victoria Gallery and Museum	421 (Grid Ref: D7)
Vine Court	804, 805 (Grid Ref: F1)
Walker Building	237
Waterhouse Buildings	351, 352, 356, 357 (Grid Ref: C9/D9)
Whelan Building	302 (Grid Ref: C8)



Sat Nav
For Car Park
L35TR

● Crown Place
Halls of Residence
(under construction)

● Vine Court
Halls of Residence

● Greenbank
Student Village

● Camatic
Student Village

KEY
MAIN UNIVERSITY
PRECINCT

WALKING DISTANCE
UNIVERSITY TO LIME STREET STATION: 15 MINS
UNIVERSITY TO ALBERT DOCK: 25 MINS

**Student Recruitment
and Admissions Office**

The University of Liverpool L69 7ZX

T: +44 (0)151 794 5832

E: openday@liverpool.ac.uk

www.liverpool.ac.uk/openday


Inspiring Friendly Ambitious Original Global

Keep up-to-date with what's happening
on Open Day by following our live
twitter and facebook news feeds and
download our new Open Day iPhone
App at <http://opendays.liv.ac.uk>



 @livopenday #livopenday

 www.facebook.com/livopenday

 @livuni #livopenday