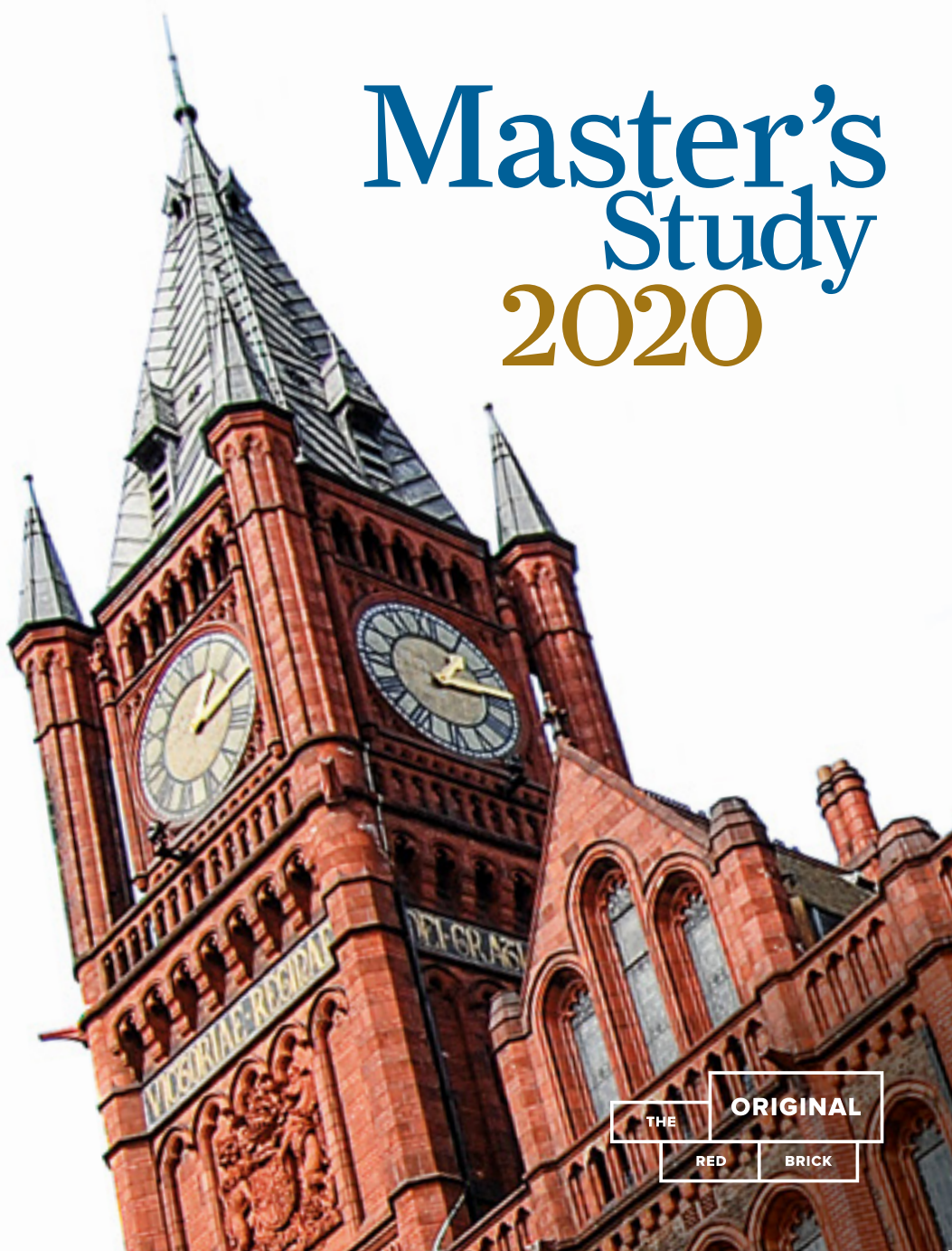




UNIVERSITY OF
LIVERPOOL

Master's Study 2020



THE ORIGINAL
RED BRICK

Contents

<i>The Original Redbrick</i>	01
<i>About the University of Liverpool</i>	02
<i>Progress to Postgraduate: Get to where you want to be</i>	04
<i>The University of Liverpool in London</i>	06
<i>Online programmes</i>	08
<i>A University of Liverpool degree in China</i>	09
<i>Careers and Employability: Achieve your aspirations</i>	10
<i>Life on campus</i>	14
English language support	14
Learning resources	15
Student Services Centre	15
Open Languages	16
Sport Liverpool	16
Liverpool Guild of Students	16
Continuing Education	16
<i>Accommodation</i>	17
<i>Alumni Community</i>	18
<i>Meet us</i>	19
<i>Life in the city</i>	20
<i>Choosing your programme of study</i>	22
Faculty of Humanities and Social Sciences	24
Faculty of Science and Engineering	28
Faculty of Health and Life Sciences	32
<i>Master's programmes 2020</i>	36
Faculty of Humanities and Social Sciences	36
Faculty of Science and Engineering	38
Faculty of Health and Life Sciences	39
<i>Contact us</i>	41

Our story began in 1881. We became one of the first civic universities. **The original redbrick.**

Nearly 140 years later, we're as original as ever.

We're still welcoming people from every walk of life.

Still colourful and creative.

Warm and welcoming.

Still advancing learning and ennobling life, just like we always have.

And uncovering world-firsts through our pioneering research.

Still marching to the beat of our own drum.

Still bursting with character. And characters.

Still shaping the spirit that makes Liverpool a one-of-a-kind city.

And helping our students forge their own path.

1881 is where our story started.

We were original then.

And we are original now.

Study with us, and stand out.

About this Guide

This Guide introduces you to the University of Liverpool and gives you an at-a-glance look at what we offer at master's level.

Every effort has been made to ensure that information contained within this Guide is accurate at the time of going to press (August 2019). However, for the very latest developments on all our master's programmes and financial information please visit liverpool.ac.uk/study/postgraduate-taught




TERMS AND CONDITIONS For further details please see liverpool.ac.uk/study/postgraduate-taught/applying/taught_policies/

About the University of Liverpool




Original

We are the original redbrick university.



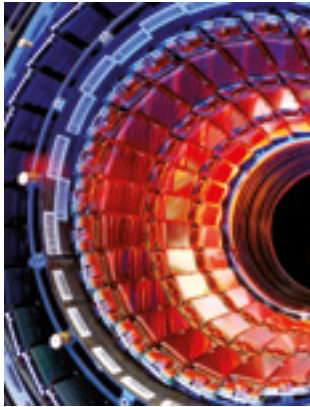
Nobel Laureates

Associated with nine Nobel Laureates.



35,000


students, 8,000 of whom travel from all over the world to study here.






1881

Established in 1881: in this year Queen Victoria reigned over Great Britain and the UK had its first street lit with electric light.



Russell Group

Member of the Russell Group.



Global links

We have a campus in London, and we were the first UK university to establish a joint venture university in China.



81%

of our research is ranked 'world-leading' and 'internationally excellent' in the latest Research Excellence Framework (REF).



£800 million

invested in our campus.



Top 200

Ranked in the top 200 universities worldwide (THE 2017/18, QS 2017/18, ARWU 2017).



£95.6 million

in funding to support research projects in 2017/18.



2,700


More than 2,700 research collaborations worldwide.



2,000+

active interdisciplinary research staff across three Faculties.





228,000

A global network of 228,000 alumni in 171 countries.

Progress to Postgraduate: Get to where you want to be

At Liverpool you'll gain a postgraduate qualification that is valued worldwide. Our master's programmes can help you to specialise in the subject you're passionate about, move in to a new field, or gain the qualifications and skills needed for your chosen career. But, more importantly, we can help you stand out from the crowd and achieve your ambitions.



Whether you're building on your undergraduate subject or switching discipline, if you're progressing straight from your undergraduate degree or returning to education, we offer a range of study options to suit you.

You can:

- Choose from full and part-time master's programmes, postgraduate diplomas and certificates
- Study at our global campuses in Liverpool, London and Suzhou, China
- Study wherever you are in the world through our online degrees
- Continue your Professional Development with our CPD opportunities.

Whichever programme or route you choose you will advance your knowledge by accessing world-leading research whilst enhancing your career prospects.

So, why Liverpool?

Worldwide reputation for excellence

The University of Liverpool is one of the UK's leading research institutions with an annual turnover of £523 million, including £95 million for research.

Associated with nine Nobel Laureates and consistently ranked in the top 200 universities worldwide, Liverpool is a member of the prestigious Russell Group of the UK's leading research universities.

At the forefront of innovation and discovery, our academics and researchers are advancing knowledge to improve lives. Our interdisciplinary research, unique model for collaborations and cutting-edge facilities, enable our research community to create global solutions aiming to improve health, create wealth and ensure social justice.

We have globally recognised research strengths in Advanced Materials, Personalised Health, Infectious Diseases, Digital, Heritage, and Starting, living and ageing well.

By joining a research-led university you will benefit from a high-quality education, learning from inspirational figures who will challenge and encourage you throughout your studies.

Research-led teaching

Our teaching, like our research, is at the forefront of knowledge and is delivered by leading and internationally renowned academics. As a master's student you will be learning about the latest advances in your subject and will benefit from being part of a department that is contributing to these developments.

We also deliver research focused modules on all of our master's programmes which equip you with the research and development skills needed, not only to successfully complete your dissertation, but to prepare you for your next steps whether that's further research or employment.

Investment in your student experience

The University is committed to continually improving the quality of its student experience and, following significant large scale capital investment, we are transforming our campus to provide you with high quality learning and teaching spaces and research environments.

Your global network

From the moment you join us at Liverpool you will join our global network and benefit from its reach. You will meet and study with students from across the globe and establish life-long networks and friendships that extend beyond your time studying here.

As a connected global university we attract staff and students from over 130 countries worldwide and we also create opportunities for all our staff and students to explore international opportunities around the world too. We achieve this through our global network which includes physical and virtual campuses as well as our research and mobility partnerships.

Creating opportunities and making a difference

As well as creating opportunities for our students, we are committed to making our ground-breaking research and frontier technologies available to our collaborators, for the benefit of the regional and national economies.

We are driving the city's knowledge economy through close collaboration with fellow universities, industry and the NHS, helping the Liverpool City Region to compete in the global business world.

And, we have been instrumental in Liverpool's Knowledge Quarter Development (KQ Liverpool), home to some of the world's most influential players in science, health, technology, education, music and the creative and performing arts.

KQ Liverpool is:

- Successfully attracting new investment
- Increasing the city's employment figures
- Improving graduate attraction and retention rates
- Establishing the city region as a key player in the Northern Powerhouse.

The University of Liverpool in London

In 2014 we decided to take the spirit of the city of Liverpool and the University to another great city, London.

London is the world's number one student city, home to over 100,000 international students from over 200 different nations.*

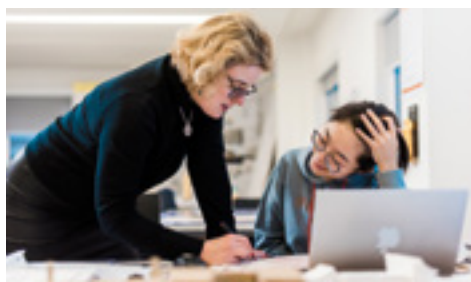


We were the first non-London based Russell Group university to open a campus in London; and our centre for excellence, in the heart of the city's financial district, offers innovative, professionally-focused CPD opportunities and master's programmes in the areas of:

- Accounting
- Finance
- Business
- Communication
- Design.

Our established professional, cultural, government and academic networks enable us to offer prospective and current students an unrivalled base from which to develop and explore a diverse range of opportunities.

*QS Best Student Cities 2018.



The quality of your postgraduate experience is our key priority – the University of Liverpool in London delivers a premium learning experience.

A carefully developed portfolio of programmes has been designed to produce highly-skilled, commercially aware, workforce-ready graduates; and our existing links with London-based employers, professional institutes and policy makers enable us to offer you the opportunity to enhance your capability in one of the world's most dynamic and inspiring cities.

All programmes are delivered by University of Liverpool staff, and benefit from the University's research excellence, ensuring you'll study at the very forefront of knowledge in your discipline.

Master's programmes taught at the London campus are listed on pages 36-40 of this guide.

For more information, visit liverpool.ac.uk/london



The chance to study a master's at the University of Liverpool in London was life changing for me.

Case Study

Yilan Wang, MSc Accounting graduate 2018
Now working as a Retail Banking and Wealth Management Graduate Trainee at HSBC

The most unique part of University of Liverpool in London is the location of the campus as it's based next to many big-name companies, like Bloomberg and Grant Thornton. I travelled to the University with business professionals commuting to work every day which inspired me to work harder to be like them.

Online programmes

An online qualification you can be proud of

The University of Liverpool has been offering online programmes since 2001, making us one of Europe's leading providers of wholly online postgraduate degrees.

We currently offer online degrees in a range of subjects, including health and life sciences, computer science and management.

It's very convenient to be able to go to class anytime, anywhere and get access to the University library 24/7. I absolutely love that flexibility.

Nick Mawani
Online student

Our online learning model can fit into busy lifestyles, offering flexibility within a framework that works across time zones.

Designed for professionals, our programmes draw on your existing expertise and experience to make the academic principles you learn real and relevant.

You'll be encouraged to apply your learning in your workplace where possible, and discuss the outcomes with fellow students who are also experienced professionals.

Online programmes are listed on pages 36-40 of this guide.

For more information, visit liverpool.ac.uk/study/online



A University of Liverpool degree in China

The University of Liverpool is unique in having established an independent international university in China through a joint venture with one of China's top universities. Xi'an Jiaotong-Liverpool University (XJTLU) has, after only 13 years, grown its student population to over 12,000 and is already ranked 79th in the 2019 QS Mainland China University rankings.

Postgraduate programmes at XJTLU are all taught in English and lead to a master's degree from the University of Liverpool – so you become a Liverpool graduate with a distinctive difference. Master's programmes start in September each year, typically taking 18 months to complete.

XJTLU brings together excellent research practice and expertise from both parent institutions, blending this to provide a unique international educational experience to give you the skills and knowledge you'll need to secure a career in a global marketplace.

XJTLU is based in the beautiful city of Suzhou, ranked as the most liveable in mainland China, and is located just 24 minutes from Shanghai by bullet train. The campus is located in Suzhou* Industrial Park (SIP), one of Asia's most successful business parks – a hub for foreign investors and home to 3,300 international organisations, including 84 Fortune 500 companies, SIP provides opportunities for extensive research and knowledge exchange initiatives.

For more information about studying for a University of Liverpool in China degree and to see the full list of master's programmes available visit xjtlu.edu.cn/en/find-a-programme

*The Economist Intelligence Unit



Careers and Employability: Achieve your aspirations

Whatever your motivation for studying at master's level our Careers and Employability team are here to support you in achieving your aspirations.

We're proud of our long standing relationship with the University of Liverpool

Gael Decoudu, Head of Data Science and Digital Analytics, ShopDirect

Our relationship seems to grow bigger and stronger every year. Having a world-class Russell Group university on our doorstep, especially one that puts emphasis on employability, is really important to us. There's a focus on applying academic theory to real life scenarios at the University, which means the students we speak to are able to start thinking and innovating commercially.

We've hired some excellent students, from undergraduates to PhDs from STEM subjects, to bolster our customer intelligence teams. We're also welcoming interns and MSc students for their final projects, developing research partnerships with the faculty on applied research topics and providing scholarships to PhD students. Conducting guest lectures has also allowed us to develop a two-way partnership.

Case Study

In 2018, 77% of *postgraduates* were found to be in *higher skilled* jobs compared to 65% of *graduates**

Department for Education: Graduate Labour Market Statistics 2018

On average, *postgraduates* earn £6,000 more per year than *graduates**

Department for Education: Graduate Labour Market Statistics 2018

We offer high-quality employability support during and after your time studying with us, blending advice and guidance with practical training that utilises the expertise we have developed as one of the UK's leading careers services.

Our Careers and Employability team support students across all subjects, and you will have full access to up-to-date resources and support in our Careers Studio in the heart of the campus.

Our careers support is focused on three themes, helping you to Apply, Connect, and Explore. Our Career Studio provides a welcoming space to work on job applications with our Career Coaches, meet leading employers, and to plan your career and discover the latest graduate opportunities.

As a postgraduate student you will have access to a comprehensive programme of careers related seminars, workshops, fairs and recruitment events. As well as on-campus activities we also offer online support, webinars, resources, and guidance.

We can help you with:

- Career planning
- Understanding the job market
- Making effective applications through CVs, letters and application forms
- Preparing for and attending job interviews
- Performing effectively at Assessment Centres
- Strengthening your networking skills, including digital networking
- Industry networking opportunities.

We have won several prestigious awards, most recently the University Career Service Best Practice award at the Global University Careers Development Conference 2019. For more information visit liverpool.ac.uk/careers

*Percentages based on all working age graduates and postgraduates.





I decided to undertake a master's course for personal interest, but also to help with my career. I completed my undergraduate degree six years ago so it has been quite refreshing and enjoyable for me to return to a learning environment and to be able to develop a deeper understanding of new and stimulating concepts.

Case Study

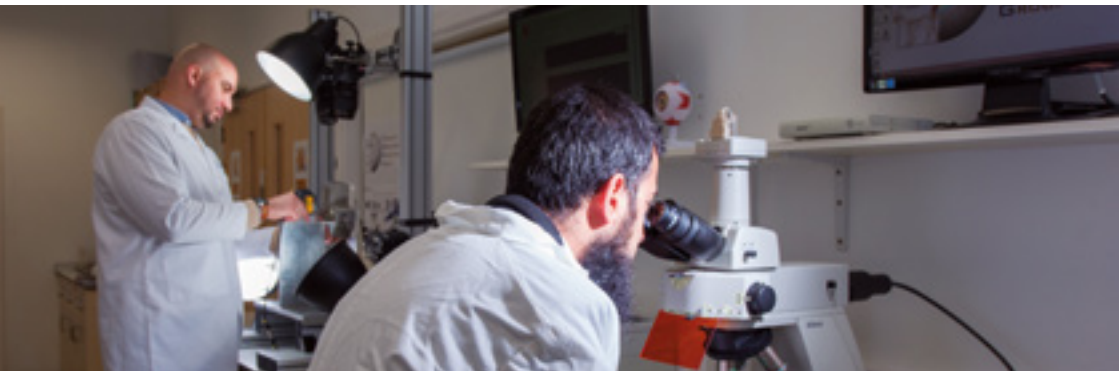
The combination of modules on my course fitted very well with the topic areas I wanted to pursue. The course is also accredited by the Institute of Environmental Management and Assessment (IEMA) and through completion of the required modules, I have been able to automatically upgrade my existing membership with IEMA. This was a particularly attractive feature for me as I currently work as an Environmental Consultant while studying part-time.

Juggling part-time study with a career comes with its own challenges and I have been very fortunate to have all the support from my tutors and the Careers and Employability Service who are just on the doorstep within the campus. They are incredibly knowledgeable and go the extra mile to provide help and guidance when needed. They definitely push you to realise your potential.

My advice to anyone considering postgraduate study would be to come prepared to put in the hours and to work hard! It will be challenging at times, however the knowledge, skills and postgraduate qualification you will gain at the end of it will be worth it.

Mwale Mutale, Environmental Assessment and Management MSc (Part-time) graduate

Mwale is now a Senior Consultant at WSP, one of the world's leading engineering professional services consulting firms.



Postgraduate study has allowed me to focus my career prospects whilst expanding my knowledge and lab-based skills. The master's has provided opportunities that would not have been available to me otherwise, which I value greatly. Postgraduate study was an investment into my own future that paid off with the help of the University of Liverpool.

Case Study

The company I now work for, 3D Life Prints, offered my cohort the opportunity for an industrial placement whilst at the University of Liverpool. I was fortunate enough to be taken on permanently upon the completion of my master's. For me, I feel that studying Biomedical Engineering at the University of Liverpool was a direct link to industry and allowed me to step into the profession I aspired to be in.

Postgraduate study broadens horizons whilst giving you a deeper understanding in your field of interest. Also, studying an accredited course, such as Biomedical Engineering MSc (Eng), places you in a very strong professional standing upon completion.

In summary, postgraduate study is a fulfilling and valuable experience for pursuing a career in both academia and industry – but be prepared to work for it!

Nick Turner, Biomedical Engineering MSc graduate

Nick is now a Lead Biomedical Engineer at 3D Life Prints where he undertook an industrial placement as part of his MSc.

Life on *campus*

Our master's students are valued members of our student community who are supported through our professional services teams and encouraged to become active members of the student community.



The facilities at Liverpool are second to none. I have always found everything I need, whether that be workspace, study materials or advice.

Marianne Scott
Mathematical Sciences MSc

English language support

The English Language Centre (ELC) is the University's specialist English language facility for international students.

If you need to improve your English before you start your master's programme we offer specially designed Pre-session courses ranging from short intensive courses to all year round study. We also provide a free comprehensive programme of In-session English support to run alongside your master's programme. These programmes can be discipline specific, focusing on relevant language used in particular subject areas, or general academic English suitable for all international students.

ELC is also a registered IELTS testing centre running over 20 tests a year and provides IELTS training year round. For more information, visit liverpool.ac.uk/english-language-centre



Learning resources

We have impressive on campus learning resources available to all our postgraduate students from our designated postgraduate study space, impressive libraries and high-tech computer services.

- 24 hour term-time opening
- Over 2 million books and 680,000 electronic books
- 65,000 electronic journals
- Special collections including the largest Science Fiction collection in Europe and rare books and manuscripts
- 2,400 PCs across campus
- Laptop loan service
- High speed wifi
- Access to our services online wherever you are
- 24 hour service desk
- Free email, file space and software
- Access course materials, submit assessments, contribute to discussions and group assignments through our virtual learning environment 'VITAL'.

For more information on our library services, visit liverpool.ac.uk/library. For more information on our computing services, visit liverpool.ac.uk/csd



Student Services Centre

We offer comprehensive support and welfare services to students through two teams: Student Welfare Advice and Guidance, and the Counselling and Mental Health Services.

Student Welfare Advice and Guidance

The team can offer you advice, support and information on a wide range of non-academic issues including finance, disability, issues relating to your general welfare and support for international students.

Counselling and Mental Health Services

The Counselling Service is here to help you address personal or emotional problems that get in the way of realising your full academic and personal potential. The service offers free and confidential advice to all students.

For more information on all of the advice and guidance available to you as a master's student, visit liverpool.ac.uk/studentsupport/



Open Languages

As a master's student you have the opportunity to learn a new language and open up your world even further through our Open Languages modules. Graduates who speak another language are in high demand in roles that extend well beyond interpretation and translation to encompass all elements of business transaction, international cooperation and politics. As a postgraduate student you can study language modules in French, German, Chinese (Mandarin), Italian, Spanish, Portuguese, Basque or Catalan as an extra-curricular option. For more information, visit liverpool.ac.uk/languages

Sport Liverpool

Whether you take part in organised activities or independent exercise, our sports services provide a great way to meet people, get connected and achieve a level of fitness and general wellbeing that can help you with the other, more demanding aspects of University life. For more information, visit liverpool.ac.uk/sports

Liverpool Guild of Students

As soon as you join the University of Liverpool, you automatically become a member of the Liverpool Guild of Students and from your first day as a student and throughout your university years, the Guild will make sure you enjoy your time at Liverpool.

You can also become a member of the Postgrad Society – run by postgraduates for postgraduates, the society aims to nurture an environment where students can feel both supported and encouraged in order to increase postgraduate wellbeing and engagement across the University.

For more information, visit liverpoolguild.org



Continuing Education

Continuing Education provides short courses, lectures, and events during the academic year. You can learn new skills, a new language, or simply learn for fun. Our flexible start times mean you can easily fit a Continuing Education course in around your study.

For more information, visit liverpool.ac.uk/continuing-education or follow us on Twitter [@livuniCE](https://twitter.com/livuniCE)



Liverpool
Guild of
Students

Accommodation

We are fortunate in Liverpool to have a wide variety of accommodation for our postgraduate students, with good facilities and at reasonable prices.

University accommodation

Postgraduate students can apply to stay at any of the University's accommodation. However, for your convenience and comfort, we endeavour to house all postgraduate students together, typically at our Philharmonic Court residences.

Philharmonic Court offers self-catered en-suite rooms all with double beds arranged around a central courtyard. It has its own social space, on-site laundry and study rooms. Rooms are all fully furnished, broadband-connected and finished to a high standard. The residence itself is gated with a private central courtyard, 24hr reception and on-site residential adviser team. The University campus and city centre are just a short walk away.

For more information, visit liverpool.ac.uk/accommodation

Privately rented accommodation

Liverpool is a large city with a wide variety of rented accommodation available. Type and standard of accommodation in Liverpool varies considerably – and so does the cost. If possible, you should come to Liverpool a few weeks before your programme starts to look for a suitable place.

For information regarding private housing in Liverpool visit Liverpool Student Homes at liverpoolstudenthomes.org/

Residential adviser opportunities

You can live at the heart of both our award winning campus and amazing city by becoming one of our Residential Advisers and save a minimum of £4,750 per year on accommodation! You'll provide support and guidance to our undergraduate students, with anything from lost keys or illness to wellbeing concerns or news of a family bereavement. We will provide you with the necessary training and you will have 24/7 back-up from our professional student support teams. In return, we can offer you accommodation at a reduced rate as well as the opportunity to gain some valuable experience to benefit your future career. For more information, visit liverpool.ac.uk/accommodation



Alumni Community

Globally connected for life

Your journey and relationship with the University doesn't end once you graduate; quite the opposite! As a University of Liverpool graduate you will have access to a wide range of benefits and services including event invitations and our professional interest networks which offer professional development support. With more than 228,000 graduates located all over the world, the University of Liverpool boasts a thriving alumni community which will be invaluable throughout your university journey and beyond.

As a graduate you can:

CONNECT with alumni around the world by joining one of our professional, academic, and social networks or by attending one of our many events.

LEARN new skills through discounted CPD study, free online journal access, and webinars.

DEVELOP your career by joining our new global eNetworking platform, Liverpool Connect, created exclusively for University of Liverpool alumni.

Liverpool Connect

Through Liverpool Connect you can benefit from the insight of our alumni community by networking and sharing professional experience. This online space allows you to network with other current students and graduates and share 'insider' information on job roles and career areas. If you're looking for a contact in a particular industry or sector, or thinking of changing careers, our online eNetworking platform lists the details of many University of Liverpool alumni, locally, nationally and internationally, so that you can find the contact you need to advance your career or develop your business.

We are enormously proud of our global alumni family and are confident that your University of Liverpool degree will be of great benefit throughout your career.

To find out more, visit liverpool.ac.uk/alumni



Liverpool graduates have become pioneers in every field and we are associated with nine Nobel Prize winners.

Other notable graduates include...



...the first female Director-General of MI5



...the first female judge to sit at the Old Bailey



...the first Chief executive of Hong Kong



...the founder of the Stirling prize for Architecture

Meet us

There are many ways to meet us to discuss the postgraduate opportunities we have on offer at the University of Liverpool.

Postgraduate Open Evenings

Join us at one of our Open Evenings to discover the exciting range of professional, creative and industry focused programmes that you could be studying in September 2020.

This year's events are taking place on:

- **Wednesday 20 November 2019**
- **Wednesday 18 March 2020**

For more information and to register, visit liverpool.ac.uk/pg/penday



Postgrad LIVE! 2020

We're also delighted to be hosting Postgrad LIVE! at our Liverpool campus on **Wednesday 12 February 2020**.

Postgrad LIVE! is your chance to:

- Meet representatives from top universities both in the UK and abroad – all in one place!
- Get master's and PhD application advice

- Attend free talks about everything to do with master's and PhD study
- Pick up an exclusive and comprehensive guide to UK postgraduate funding and speak to funding experts.

Register and attend for your chance to win a £1,000 study bursary!

For more information and to register, visit findamasters.com/LIVE

Virtual Open Day

If you are unable to visit the campus, our Virtual Open Day is an ideal way for you to explore the facilities we offer at our Liverpool and London campuses from wherever you are in the world.

To take a look, visit liverpool.ac.uk/virtual-open-day

Meet us where you are

We attend a number of postgraduate fairs and events both in the UK and across the globe throughout the year where you can speak to a University of Liverpool representative about our programmes and opportunities.

For details, visit liverpool.ac.uk/study/postgraduate-taught/meet-us



Life in *the city*

We are local colour and global perspectives. Blues, Reds, and every colour of the rainbow. Study with us, and find your home.

Liverpool is a city which is home to 50,000 students with a vibrant cultural and social scene – from music, art, and theatre to sport, shopping, and nightlife.

Our impressive waterfront is a UNESCO World Heritage Site, and we have more listed buildings than any other city in the UK outside of London.

Art and museums

Liverpool is an 'art-lovers' paradise; from old masters to modern masterpieces and cutting-edge film, photography and visual arts. Many of the city's museums celebrate Liverpool's rich and varied history.

Highlights include the Walker Art Gallery, Tate Liverpool, FACT, the Museum of Liverpool, Merseyside Maritime Museum and The Liverpool Slavery Museum.



Theatre and performance

Amongst Liverpool's many theatres, the Liverpool Playhouse stages premieres by both local and international writers, while the Liverpool Empire is home to popular touring West End productions including The Lion King, Wicked and Mamma Mia!

The Liverpool Everyman Theatre features a 400 seat auditorium, and its redevelopment was awarded the RIBA Stirling Prize for best new building of the year in 2014.

Music

Whether you prefer to see big names in stadium size venues or the newest unknown talent in underground clubs, Liverpool is the place to be. Classical music fans should not miss the world renowned Royal Liverpool Philharmonic Orchestra, led by the Chief Conductor and honorary Professor of the University of Liverpool, Vasily Petrenko.



Festivals

Year-round Liverpool draws crowds to its internationally acclaimed music and cultural festivals. Whether it's to see live music at Liverpool Sound City, the Liverpool International Music Festival, Africa Oyé and Creamfields; embrace the energy and passion at Brouhaha, Homotopia, Brazilica and Liverpool Pride; or experience our heritage and culture at the Mersey River Festival and Liverpool Light Night, you can be sure Liverpool is always celebrating something!



Sport

Liverpool is synonymous with sport. Home to two of the Premiership's biggest football teams, Liverpool and Everton, both home grounds are a mile or so from the city centre. Aintree Racecourse is home to the one of the highlights of the annual horse racing calendar, the Grand National. Locally there is County Cricket, golf on England's 'Golf Coast', Rugby League at St Helens and Widnes, and ample opportunities for water sports on the coastal outskirts of the city.



Shopping

Liverpool is a shopping destination to rival any city. Liverpool One houses 160 shops that are open late into the evening, along with restaurants and a multiplex cinema. Nearby, there is high-end and designer fashion at the Met Quarter and Cavern Walks and just a short walk from there you can find small, eclectic boutiques and quirky shops, offering a range of styles from urban streetwear to vintage.

Eating out

Aside from the many eateries dotted around campus, there is an incredible range of cafés, bistros and restaurants in Liverpool appealing to all tastes and budgets.

Nightlife

With over 250 city centre pubs and clubs, it is no surprise that we were voted Whatuni? 2018 winner of student choice award for best City Life.

Relaxing

In the south of the city you will find Calderstones and Sefton Parks and Lark Lane, home to chilled-out bars, restaurants and an eclectic mix of independent shops. Or head to the north of the city to find Formby which offers an unspoilt stretch of National Trust coastline, or to Crosby Beach to see Antony Gormley's 'Another Place' installation of 100 life-size statues.

Choosing your programme of study

The University is comprised of three faculties; the Faculty of Humanities and Social Sciences, the Faculty of Science and Engineering and the Faculty of Health and Life Sciences, and our strength lies in bringing together academics from across all our Faculties to produce interdisciplinary research that is globally relevant. We offer a diverse range of master's programmes across all three Faculties that are powered by this cutting-edge research.

Designed for you

We know that our master's students have different motivations for studying at this advanced level and we cater for all of their needs.

Most of the master's programmes at our Liverpool and London campuses can be studied full-time over 12 months, which is ideal if you're an undergraduate progressing straight on to a master's programme or an international student coming to the UK to study. If you have other commitments that you need to fit your studies around, most of our programmes can be studied part-time over two years too.

Typically, programmes start in September with taught modules taking place over two semesters, through to June the following year. Dissertations are completed over the summer and you graduate the following December.

For people who are in employment and trying to fit master's study into their busy lifestyles, a number of our master's programmes can be studied on a flexible basis as CPD modules, as a PG Certificate or a PG Diploma; allowing you to progress to the full master's programme at your own pace. Alternatively, you can join the 8,000 students who are studying one of our postgraduate qualifications online.

Many of our programmes now include internships, are professionally accredited, and benefit from guest speakers from industry – all of which enhance your experience and prospects.

Look out for the following symbols when you're browsing our master's programmes online.



Professionally accredited



Internships available



Modules available as CPD

Entry requirements

For entry on to our master's programmes, you will normally need a first class or 2:1 honour's degree in a relevant subject or the international equivalent (as recognised by the National Recognition Information Centre (NARIC) or the University's international recruitment office).

All applicants must have reached a minimum required standard of English language and are required to provide evidence of this.

Qualifications accepted by the University can be found on our International webpages. Please see liverpool.ac.uk/international for English language requirements specific to your country.

Some programmes may have additional or specific entry requirements, so please check the master's programme you are interested in before submitting your application.

How to apply

Once you have chosen your master's programme(s), the easiest way to apply is online. Go to liverpool.ac.uk/study/postgraduate-taught/applying

You'll be required to submit your:

- University/degree transcripts and certificates
- Evidence of English language ability (International/EU applicants only; visit our website for details)
- A personal statement explaining why you want to undertake the programme and why you feel you are a suitable candidate
- Two references.

We encourage all students to apply for their chosen programme as soon as possible. International students who require a visa to study in the UK should apply no later than 31 July of the year they wish to commence their studies. UK and EU students should apply no later than 31 August.

Fees and Scholarships

Tuition fees

The University's tuition fees represent excellent value for money for a Russell Group university. Fees cover the cost of your tuition, registration, examinations (but not resits) and graduation.

The level of fees you pay depends upon whether you are classified as a UK, EU or international student. The fees for each of our master's programmes are listed on pages 36 to 40.

Fee deposits

The University operates a fee deposit scheme for all international master's students. For more information, visit liverpool.ac.uk/study/international/tuition-fees-and-scholarships/fee-deposits/

Scholarships and awards

We also offer a range of generous scholarships and awards for UK, EU and international students.

Whilst some scholarships and awards are automatically awarded to eligible students, others require you to apply and have an application deadline. So, if you do require financial support, we suggest that you start to research how you're going to fund your master's programme at least 12 months in advance of your start date.

Look out for the  symbol for details of scholarships on our course webpages.

Postgraduate Progression Awards

If you're a current University of Liverpool undergraduate or alumni, including Study Abroad and Exchange students, progressing to either full or part-time postgraduate taught study you're eligible to receive one of our Postgraduate Progression Awards, a reduction in tuition fees. For more information, visit liverpool.ac.uk/progress

Master's Loans

If you plan to take a taught, research or professional master's course in 2020, you may be able to get a Government loan to help with course fees and living costs. In 2019 you could borrow up to £10,906, but this figure and the eligibility criteria may change for 2020.

For the very latest information on fees, including payment of fees and transferring funds from abroad, and loans and scholarships, visit liverpool.ac.uk/study/postgraduate-taught/finance

Faculty of Humanities and Social Sciences

We are culture to take in, and ideas to take forward.
A place where ambitions take shape, and visions are made real.
Study with us, and get immersed.

The Faculty of Humanities and Social Sciences is made up of:

University of Liverpool Management School

School of the Arts

- Architecture
- Communication and Media
- English
- Music
- Philosophy.

School of Histories, Languages and Cultures

- Archaeology, Classics and Egyptology
- History
- Irish Studies
- Modern Languages and Cultures
- Politics.

School of Law and Social Justice

- Law
- Sociology, Social Policy and Criminology.

You can study both Master of Arts (MA) and Master of Science (MSc) programmes within the Faculty, as well as Master of Research (MRes) programmes, which involve more independent study than the MAs and MScs, and are often a route to PhD study.

Architecture, Communication and Media, and the University of Liverpool Management School offer programmes at both our Liverpool and London campuses and you can study some Management programmes online.

Many of our master's programmes are professionally accredited and we also offer a number of specialised and professional master's degrees.

For details of all our master's programmes, visit liverpool.ac.uk/study/postgraduate-taught



Spotlight on research We are tapping into the power of music

Discovering how sounds help us to tune into history, culture and memory.

Whether it's the first song you ever bought, the songs that defined your school days or lamented a lost love, there's no denying the power of music to take us back to a happy or unhappy place.

Researchers at the University of Liverpool are now tapping into that power in a more methodological way, opening up new avenues and opportunities for it to enrich our lives. This includes an inclusive approach to music with regards to ageing, and a recognition that the adoption of technology and digital tools is tied not only to age but to gender, income, literacy and ethnicity.

Our work on place, heritage and memory has involved collaboration with various organisations, including Historic England, National Museums Liverpool, the Manchester Hallé Orchestra, and Liverpool's Open Eye Gallery, and has used music as a resource for autobiographical and collective remembering for people of all ages. In doing so, it has revealed hidden histories and heritages through exhibitions, maps and film, and helped the public access music that had been inaccessible or under-utilised.

Find out more about research at Liverpool at liverpool.ac.uk/research/ and our work on music at liverpool.ac.uk/research/research-at-liverpool/research-themes/heritage/music-matters/

liverpool.ac.uk/study/postgraduate-taught



Spotlight on
University of Liverpool Management School

Making a difference from a
vibrant and enterprising world
city of culture.

AACSB-Accredited, the University of Liverpool Management School is in the top 5% of business schools worldwide. Regarded as one of the most rigorous assessments, many top global recruiters will only consider candidates from AACSB Accredited schools – a clear signal that our programmes respond to the needs of business and meet specific standards of excellence.

The School offers a full range of postgraduate management education, encompassing master's and MBA programmes, including many MSc programmes that you can apply for regardless of the subject you studied at undergraduate level – opening up exciting, new and vocational career paths. These programmes include the Entrepreneurship MSc, Human Resource Management MSc, International Business MSc, Master in Management MIM, Marketing MSc and Sports Business Management MSc.

Meet our student, Henning Jaenisch, studying the Master in Management MIM.

The Master in Management MIM has been designed to provide you with an insight into what it means to be a manager in contemporary organisations. Developed to meet the demands of employers, graduates from the Master in Management programme can look forward to a successful career in middle and senior management across a range of organisations.

See pages 36 to 40 for a full list of the master's programmes we offer.



I love the atmosphere in Liverpool, there is always something going on and the city has a vibrant and exciting sensation and offers so many great experiences.

Before studying in Liverpool I was doing my bachelor's degree at the Berlin School for Economics and Law in Business Administration and Logistics. I also worked for Deutsche Bahn, the biggest Rail Transport Company in Europe, in the European Steel Sales sector.

I had travelled to Liverpool before studying here and really liked it. The city compares to my hometown in many ways so I felt very comfortable around here. I also received the Management School's Future Leaders Master's Scholarship and I am very honoured about that. It contributed greatly to my financial ability to do this master's.

The best thing about my master's at Liverpool is the practical knowledge I've gained combined with the great networks of the University. A student doesn't only get a degree, but you will have made new friends and found out how to develop a career. That combination, to me, resembles real value in education.

Henning Jaenisch, Master in Management MIM



Faculty of Science and Engineering

We are life-changing research and industry changing opinions.
The search for the unknown, and the discovery of the new.
Study with us, and create something for yourself.

The Faculty of Science and Engineering is made up of:

School of Electrical Engineering, Electronics and Computer Science

- Electrical Engineering and Electronics
- Computer Science.

School of Engineering

School of Environmental Sciences

- Earth, Ocean and Ecological Sciences
- Geography and Planning.

School of Physical Sciences

- Chemistry
- Mathematical Sciences
- Physics.

You can study Master of Science (MSc) programmes within the Faculty, as well as Master of Research (MRes) programmes, which involve more independent study than an MSc, and are often a route to PhD study.

We also offer master's programmes with a Year in Industry within the School of Electrical Engineering, Electronics and Computer Science.

Engineering, and Geography and Planning offer programmes at both our Liverpool and London campuses and you can study some Computer Science programmes online.

Many of our master's programmes are professionally accredited and we also offer a number of specialised and professional master's degrees.

For details of all our master's programmes, visit liverpool.ac.uk/study/postgraduate-taught



Spotlight on research We go where humans fear to tread

Every second in a hazardous place counts. We're pioneering computer technology that drives autonomous machines in nuclear disaster zones.

Just two hours! That's the amount of time some robots lasted when they were sent into the devastated Fukushima nuclear power plant, due to the crippling levels of radiation. And, that was in 2017, six years after the initial accident.

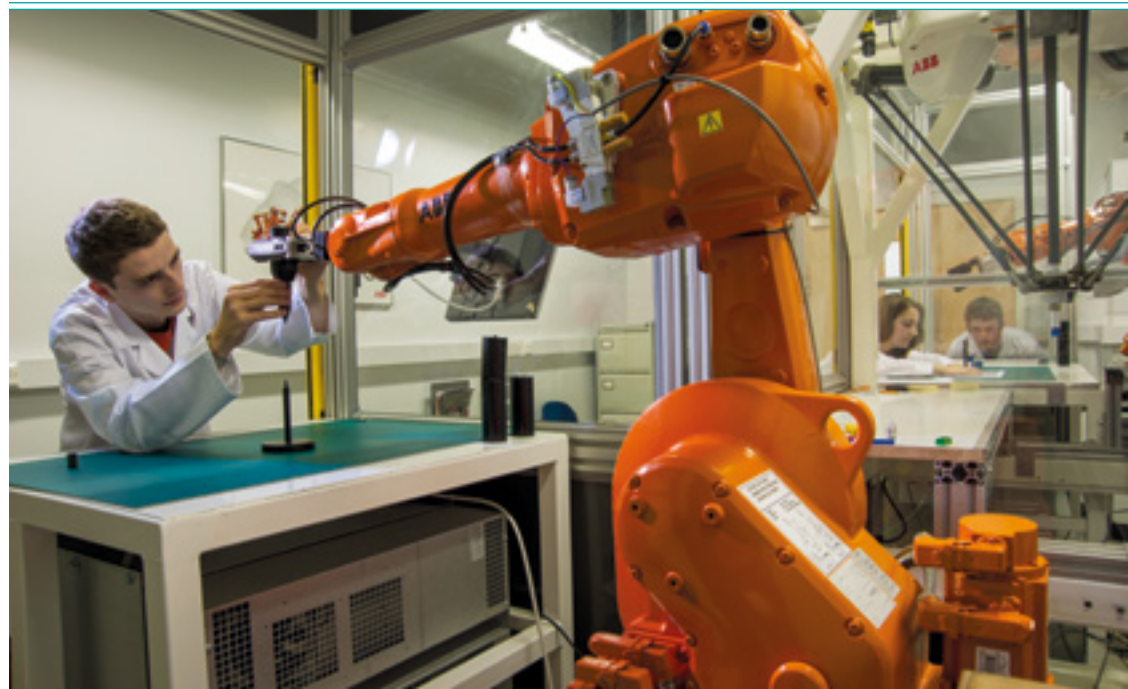
Now as the UK's 15 nuclear reactors and another 400+ around the world face astonishingly difficult decommissioning and scheduled maintenance operations, the need for intelligent autonomous robots to enter hazardous spaces and perform effectively has never been greater.

Developing computer programmes

Scientists at the University of Liverpool are at the vanguard of this effort to develop better computer programs for better autonomous machines, so that every second in such hazardous places counts. "We don't want people to go into these harmful areas, we want robots to go there instead," says Professor Michael Fisher from the Department of Computer Science. "We need to develop robots for roles in nuclear decommissioning, such as monitoring, reconnaissance and deconstruction."

When robots are in these hazardous environments, it's essential that they make the right decisions. Fisher and colleagues are tasked with generating, testing, and validating the computer code to make sure these decisions happen correctly every time.

Find out more about research at Liverpool at liverpool.ac.uk/research and our work on Autonomous Systems Technology at liverpool.ac.uk/autonomous-systems



Spotlight on The Faculty of Science and Engineering

The Faculty of Science and Engineering connects research strengths, technologies and experts from a unique, broad mix of disciplines. This places us in a strong position to develop innovative solutions and approaches to tackle many of today's complex social, economic and environmental challenges.

Our master's degrees combine advanced level teaching with a customised research project or dissertation, supervised by leading academics in their field. Innovative teaching methods, strong industry links combined with research-led and vocationally orientated master's programmes provide you with an opportunity to enhance your career prospects and equip you to meet tomorrow's challenges.

Meet our student, Pablo Astudillo Carbajosa, who studied Advanced Mechanical Engineering MSc in 2014, and is currently studying Computer Science MSc, part-time alongside a career at Bentley Motors.

The MSc in Advanced Computer Science is intended for graduates who already have a first degree in Computer Science or a closely related subject, and who wish to extend the knowledge gained in their undergraduate study with more advanced specialised material reflecting current research at the cutting edge of the discipline.

This programme is accredited by the British Computer Society and is also available to study with a year in industry.

The Advanced Mechanical Engineering MSc will develop your understanding and knowledge of the principles of Advanced Mechanical Engineering to an advanced level. Modules include specialist knowledge in thermo and fluid dynamics, combustion in IC engines, alternative and conventional energy generation methods and nuclear engineering. You will be taught techniques for managing projects and research, giving you highly desirable skills for working in industry.

This programme is fully accredited by the Institution of Mechanical Engineers.

See pages 36 to 40 for a full list of the master's programmes we offer.



I studied an MSc in Advanced Mechanical Engineering with a scholarship from Scottish Power back in 2014 and my experience at this University was fantastic. It not only provided me with the level of expertise I was looking for before getting into industry, but also helped me to secure my first job as a Graduate Engineer at Bentley Motors.

Case Study

Due to the skills requirements of my current job and the direction that companies are taking into digitalisation and technology, I wanted to broaden my skill-set and achieve a proficient level of expertise in programming and data science. The MSc in Computer Science at the University of Liverpool touches on every essential topic in this domain and at the same time guarantees great teaching quality and career opportunities.

My manager and organisation agreed and now allow me to work remotely two days per week so I undertake the MSc. This means I can attend the majority of lectures and tutorials over those two days. In addition, all of the lectures are recorded and my professors are very supportive, so if I do miss a lecture I'm able to catch up. I now dedicate the majority of my weekends to go through my assignments and to study, always leaving some time for sports and social life.

I am confident the MSc in Computer Science that I'm now studying will help me to continue succeeding in my career.

Pablo Astudillo Carbajosa, Advanced Mechanical Engineering MSc graduate 2014, currently studying Computer Science MSc, part-time alongside a career at Bentley Motors



Faculty of Health and Life Sciences

We are projects that make headlines and discoveries that make history. Shared success and personal journeys.
Study with us, and change your own world.

The Faculty of Health and Life Sciences is structured to bring together areas including Biological Sciences, Medicine, Psychology and Veterinary Science and to further promote the interdisciplinary and multidisciplinary approaches which are required for research excellence in the 21st century.

The Faculty is made up of eight institutes, five of which house research activities:

Institute of Ageing and Chronic Disease

Institute of Infection and Global Health

Institute of Integrative Biology

Institute of Psychology, Health and Society

Institute of Translational Medicine

And, three of which lead on teaching and learning, as follows:

Institute of Veterinary Sciences

Institute of Clinical Sciences

- School of Medicine
- School of Dentistry
- School of Health Sciences.

Institute of Life and Human Sciences

- School of Life Sciences
- School of Psychology.

You can study Master of Science (MSc) programmes within the Faculty, as well as MRes programmes, which involve more independent study than an MSc, and are often a route to PhD study.

You can study some programmes in Clinical Sciences and Medicine both on campus in Liverpool and online. Veterinary Sciences also offer programmes online.

Many of our master's programmes are professionally accredited and we also offer a number of specialised and professional master's degrees.

All Schools within the Faculty offer a diverse and comprehensive range of CPD modules and options.

For details of all our master's programmes, visit liverpool.ac.uk/study/postgraduate-taught



Spotlight on research

We are improving children's outcomes in paediatric medicine

Identifying what are the best drugs to choose when treating children, and what is the best dose.

Our current knowledge of the effects of paediatric medicine is incomplete because most clinical trials are undertaken in consenting adults. This has created vast gaps in our understanding of how a certain drug or therapy might work in younger people compared to adults.

The largest study conducted to date

Dr Dan Hawcutt's, from the Institute of Translational Medicine's Department of Women's and Children's Health, research covers pharmacokinetics, pharmacogenomics, and pharmacovigilance to better predict how young individuals and populations will react to drugs and the doses used.

One area of focus is whether variations in a person's DNA can cause side effects to the inhaled corticosteroids taken by hundreds of millions. Adrenal suppression appears to particularly affect children, with potentially fatal consequences. In this condition the body cannot produce enough cortisol when it really needs it, such as during infections or following injury. But there's no way to tell in advance who will be affected, and the current test is painful, invasive and hence unpopular.

Dr Hawcutt and colleagues undertook the largest study of adrenal suppression ever conducted, recruiting over 600 children. They identified, for the first time, variation in a gene associated with an increased chance of developing adrenal suppression in young people (and another respiratory condition, COPD, in older people). This important new finding is being keenly explored by other international research groups in the PiCA (Pharmacogenomics in Childhood Asthma) international consortium.

Find out more about research at Liverpool at liverpool.ac.uk/research and our work on Children's Health at liverpool.ac.uk/translational-medicine/departmentsandgroups/womens-and-childrens-health/child-health-research



Spotlight on School of Life Sciences

We've been teaching and researching Life Sciences for over 100 years and our scientists and students have helped deliver many scientific breakthroughs. We have a vibrant postgraduate community and offer life science pathways across the full spectrum of biology, from whole organisms, through molecular genetics, to biomedical sciences.

The School has developed bespoke pathways to MSc and MRes awards across all of its research areas, giving you the opportunity to develop your own postgraduate degree around your particular areas of interest.

We aim to make you an expert in one particular field, while having the ability to cross discipline boundaries – a combination of strengths that is highly attractive to prospective employers. You will be able to tackle the issues that dominate today's society and are of international relevance, such as food security, global warming, new energy sources, and the treatment of plant, animal and human diseases.

Our current pathways include:

- Animal Sciences
- Bioinformatics
- Biotechnology
- Cell Signalling
- Chemical Biology
- Conservation Biology
- Evolution and Behavioural Biology
- Functional and Comparative Genomics
- Host: Parasite Biology
- Human Immunity
- Microbiology
- Molecular Oncology
- Plant Sciences
- Structural Biology
- Sustainable Food Systems.

Meet our student, Alice Davies, studying the Advanced Biological Sciences MRes.

This MRes Advanced Biological Sciences lets you take your enthusiasm deeper with a research project carried out over a full calendar year supported by four modules that further develop your knowledge and skills ie Research Methods and Applications in Biological Sciences, plus three other modules directly related to your research project.

See pages 36 to 40 for a full list of the master's programmes we offer.



I chose to stay at the University of Liverpool for my master's course because I knew that I really enjoyed living here and I had found the teaching staff to be so enthusiastic, approachable and helpful.

Case Study

As well as the university itself, you should also think about the location, student lifestyle, societies and overall student experience to decide if a university is the right fit for you.

I've really enjoyed my MRes and the fact that you are encouraged to take the lead in your research project and drive the direction of your own project. On the MRes course, you can immerse yourself in your study and really take charge of it.

Today, a high proportion of young people go to university so having a postgraduate degree helps you stand out, especially if you want to enter a more competitive field. The MRes in particular is useful for students interested in pursuing a PhD, academic or research career later on.

Alice Davies, Advanced Biological Sciences MRes



Master's programmes 2020

Faculty of Humanities and Social Sciences

Programme	Home/ EU fees	Overseas fees	Full-time	Part-time	Campus
Archaeology, Classics and Egyptology					
Archaeology MA	£7,900	£17,050	12 months	24 months	Liverpool
Archaeology MSc	£7,900	£17,050	12 months	24 months	Liverpool
Archaeology MRes	£4,327*	£16,700*	12 months	24 months	Liverpool
Classics and Ancient History MA	£7,900	£17,050	12 months	24 months	Liverpool
Classics and Ancient History MRes	£4,327*	£16,700*	12 months	24 months	Liverpool
Egyptology MA	£7,900	£17,050	12 months	24 months	Liverpool
Egyptology MRes	£4,327*	£16,700*	12 months	24 months	Liverpool
Palaeoanthropology MSc	£7,900	£17,050	12 months	24 months	Liverpool
Palaeoanthropology MRes	£4,327*	£16,700*	12 months	24 months	Liverpool
Architecture					
Master of Architecture MArch	£9,250	£21,200	24 months		Liverpool
Architecture MA	£7,650	£17,850	12 months		Liverpool
Arts: Architecture MRes	£4,327*	£16,700*	12 months	24 months	Liverpool
Building Information Modelling MSc	£7,650	£17,850	12 months	24 months	Liverpool
Sustainable Environmental Design in Architecture (SEDA) MSc	£7,650	£17,850	12 months		Liverpool
Communication and Media					
Arts: Communication and Media MRes	£4,327*	£16,700*	12 months	24 months	Liverpool
Media and Communication MA (pathways in Digital Culture and Communication, and Media and Politics)	£7,800	£17,300	12 months	24 months	Liverpool
Strategic Communication MSc	£15,450	£22,600	12 months	24 month	London
English					
Applied Linguistics MA	£7,850	£17,750	12 months		Liverpool
Teaching English to Speakers of Other Languages (TESOL) MA	£7,850	£17,750	12 months		Liverpool
Arts: English MRes	£4,327*	£16,700*	12 months	24 months	Liverpool
English MA (pathways in Renaissance and Eighteenth-Century Literature, Victorian Literature, Modern and Contemporary Literature, and Science Fiction)	£7,650	£17,300	12 months	24 months	Liverpool
History					
Master in Archives and Records Management MARM	£8,850	£17,850	12 months	24 months	Liverpool
Master in Archives and Records Management (International pathway)	£8,850	£17,850	12 months	24 months	Liverpool
Archives MRes	£4,327*	£16,700*	12 months	24 months	Liverpool
History MA (pathways in Cultural History, Twentieth Century History, Eighteenth Century Worlds and Medieval and Renaissance Studies)	£7,400	£17,450	12 months	24 months	Liverpool
History MRes	£4,327*	£16,700*	12 months	24 months	Liverpool
International Slavery Studies MA	£7,400	£17,450	12 months	24 months	Liverpool

Programme	Home/ EU fees	Overseas fees	Full-time	Part-time	Campus
Irish Studies					
Irish Studies MRes	£4,327*	£16,700*	12 months	24 months	Liverpool
Law					
International Economic Law LLM	£7,800	£17,650	12 months	24 months	Liverpool
International Human Rights Law LLM	£7,800	£17,650	12 months	24 months	Liverpool
Law (General) LLM	£7,800	£17,650	12 months	24 months	Liverpool
Law, Medicine and Healthcare LLM	£7,800	£17,650	12 months	24 months	Liverpool
Management					
Accounting and Finance MSc	£11,000	£22,000	12 months		Liverpool
Business Analytics and Big Data MSc	£11,000	£22,000	12 months	24 months	Liverpool
Business Administration (Football Industries) PGCert	£5,960	£8,310	9 months		Liverpool
Economics MSc	£10,300	£19,000	12 months	24 months	Liverpool
Entrepreneurship MSc	£10,300	£19,000	12 months	24 months	Liverpool
Finance MSc	£11,000	£22,000	12 months	24 months	Liverpool
Football Industries MBA	£18,000	£24,950	12 months	24 months	Liverpool
Human Resource Management (CIPD Accredited) MSc	£10,650*	£20,150*	12 months	24 months	Liverpool
Occupational and Organisational Psychology MSc	£11,400	£20,000	12 months	24 months	Liverpool
International Business MSc	£10,500	£20,000	12 months	24 months	Liverpool
The Liverpool MBA	£18,000	£24,950	12 months	24 months	Liverpool
Master in Management MIM	£11,000	£22,000	12 months	24 months	Liverpool
Management MRes	£4,327*	£16,700*	12 months	24 months	Liverpool
Marketing MSc	£10,500	£20,000	12 months	24 months	Liverpool
Operations and Supply Chain Management MSc	£10,500	£20,000	12 months	24 months	Liverpool
Project Management MSc	£10,500	£20,000	12 months	24 months	Liverpool
Sports Business and Management MSc	£11,000	£22,000	12 months	24 months	Liverpool
Thoroughbred Horseracing Industries MBA	£18,000	£24,950		24 months	Liverpool
Accounting MSc	£14,000	£23,000	12 months		London
Finance and Investment Management MSc	£14,000	£23,000	12 months		London
International Accounting MSc	£14,000	£23,000	12 months		London
Sports Business and Management MSc**	See online	See online		Flexible	Online
Modern Languages and Cultures					
Latin American Studies MRes	£4,327*	£16,700*	12 months	24 months	Liverpool
Modern Languages MRes (pathways in Basque Studies, Catalan Studies, Chinese Studies, Film Studies, French Studies, German Studies, Hispanic Studies, Italian Studies, Portuguese Studies, Spanish Studies)	£4,327*	£16,700*	12 months	24 months	Liverpool
Music					
Arts: Music MRes	£4,327*	£16,700*	12 months	24 months	Liverpool
Classical Music Industry MA	£11,850	£21,850	12 months		Liverpool
Music Industry Studies MA	£7,800	£17,300	12 months	24 months	Liverpool
Performance MMus	£7,800	£17,300	12 months	24 months	Liverpool
Philosophy					
Arts: Philosophy MRes	£4,327*	£16,700*	12 months	24 months	Liverpool
Art, Aesthetics and Cultural Institutions MA	£7,800	£17,700	12 months	24 months	Liverpool
Philosophy MA	£7,800	£17,700	12 months	24 months	Liverpool

*Please note the fee shown for MRes programmes are for entry 2019/20 and will rise for entry 2020/21. They may also be subject to additional bench fees. **Subject to University approval. *Includes CIPD membership fee.

Faculty of Humanities and Social Sciences Continued

Programme	Home/ EU fees	Overseas fees	Full-time	Part-time	Campus
Politics					
International Relations and Security MA	£7,550	£17,050	12 months	24 months	Liverpool
International Relations and Security MRes	£4,327*	£16,700*	12 months	24 months	Liverpool
Sociology, Social Policy and Criminology					
Criminological Research MRes	£4,327*	£16,700*	12 months	24 months	Liverpool
Social Research MRes	£4,327*	£16,700*	12 months	24 months	Liverpool
Social Research Methods MA	£7,000	£15,850	12 months	24 months	Liverpool

*Please note the fee shown for MRes programmes are for entry 2019/20 and will rise for entry 2020/21. They may also be subject to additional bench fees. **Subject to University approval. †Includes CIPD membership fee.

Faculty of Science and Engineering

Programme	Home/ EU fees	Overseas fees	Full-time	Part-time	Campus
Chemistry					
Advanced Chemical Sciences MSc	£9,450	£22,250	12 months	24 months	Liverpool
Computer Science					
Advanced Computer Science MSc	£8,850	£21,600	12 months	24 months	Liverpool
Advanced Computer Science MSc with a Year in Industry	£10,620**	£25,950**	24 months		Liverpool
Advanced Computer Science with Internet Economics MSc	£8,850	£21,600	12 months	24 months	Liverpool
Advanced Computer Science with Internet Economics MSc with a Year in Industry	£10,620**	£25,950**	24 months		Liverpool
Big Data and High Performance Computing MSc	£8,850	£21,600	12 months	24 months	Liverpool
Big Data and High Performance Computing MSc with a Year in Industry	£10,620**	£25,950**	24 months		Liverpool
Computer Science MSc	£8,850	£21,600	12 months	24 months	Liverpool
Artificial Intelligence MSc***	See online	See online		Flexible	Online
Earth, Ocean and Ecological Sciences					
Petroleum Reservoir Geoscience MSc	£11,900	£27,450	12 months		Liverpool
Electrical Engineering and Electronics					
Energy and Power Systems MSc (Eng)	£9,300	£21,600	12 months	24 months	Liverpool
Energy and Power Systems MSc (Eng) with a Year in Industry	£11,160**	£25,950**	24 months		Liverpool
Microelectronic Systems MSc (Eng)	£9,300	£21,600	12 months	24 months	Liverpool
Microelectronic Systems MSc (Eng) with a Year in Industry	£11,160**	£25,950**	24 months		Liverpool
Telecommunications and Wireless Systems MSc (Eng)	£9,300	£21,600	12 months	24 months	Liverpool
Telecommunications and Wireless Systems MSc (Eng) with a Year in Industry	£11,160**	£25,950**	24 months		Liverpool

Programme	Home/ EU fees	Overseas fees	Full-time	Part-time	Campus
Engineering					
Advanced Aerospace Engineering MSc (Eng)	£9,250	£21,600	12 months		Liverpool
Advanced Manufacturing Systems and Technology MSc (Eng)	£9,250	£21,600	12 months		Liverpool
Advanced Mechanical Engineering MSc (Eng)	£9,250	£21,600	12 months		Liverpool
Biomedical Engineering MSc (Eng)	£9,250	£21,600	12 months		Liverpool
Product Design and Management MSc (Eng)	£9,250	£21,600	12 months		Liverpool
Risk and Uncertainty MSc (Eng)	£7,500	£17,000	12 months		Liverpool
Sustainable Civil and Structural Engineering MSc (Eng)	£9,250	£21,600	12 months		Liverpool
Advanced Transdisciplinary Design MSc	£12,100	£22,400	12 months	24 months	London
Geography and Planning					
Contemporary Human Geography (Research Methods) MA	£7,650	£16,650	12 months	24 months	Liverpool
Environmental Assessment and Management MSc	£8,400	£17,200	12 months	24 months	Liverpool
Environment and Climate Change MSc	£8,850	£20,850	12 months	24 months	Liverpool
Environmental Sciences MSc	£8,850	£20,850	12 months		Liverpool
Geographic Data Science MSc	£8,000	£17,700	12 months		Liverpool
Marine Planning and Management MSc	£8,400	£17,750	12 months	24 months	Liverpool
Town and Regional Planning MA	£7,650	£17,000	12 months	24 months	Liverpool
Town and Regional Planning MCD	£8,350	£17,200	12 months	24 months	Liverpool
Urban Design and Property Development MSc	£12,150	£22,400	12 months		London
Urban Planning MSc	£12,150	£22,400	12 months		London
Mathematical Sciences					
Financial Mathematics MSc	£9,450	£21,350	12 months		Liverpool
Mathematical Sciences MSc	£7,850	£17,400	12 months	24 months	Liverpool
Physics					
Nuclear Science and Technology MSc	ntec.co.uk	ntec.co.uk	12 months	36 months	Various
Radiometrics: Instrumentation and Modelling MSc	£9,300	£21,250	12 months	Up to 6 years	Liverpool

*Please note the fee shown for MRes programmes are for entry 2019/20 and will rise for entry 2020/21. They may also be subject to additional bench fees. **Total cost for the 24 month programme. ***Subject to University approval.

Faculty of Health and Life Sciences

Programme	Home/ EU fees	Overseas fees	Full-time	Part-time	Campus
Dentistry					
Endodontics DDSc	£17,863*	£40,940*		36 months	Liverpool
Orthodontics DDSc	£8,181*	£36,099*		36 months	Liverpool
Paediatric Dentistry DDSc	£7,571*	£36,099*		36 months	Liverpool
Health Sciences					
Advanced Practice in Healthcare MSc/PGDip/PGCert	£8,250	£19,900		3-6 years	Liverpool
Critical Care PGCert	£2,750	£6,650	12 months		Liverpool
Nursing MSc/PGDip/PGCert	£8,250	£19,900	12 months	Up to 6 years	Liverpool
Radiotherapy PGDip	£18,500**	n/a	24 months		Liverpool
Radiotherapy MSc^	£2,750	n/a		Up to 6 years	Liverpool

*Please note the fee shown for MRes and DDSc programmes are for entry 2019/20 and will rise for entry 2020/21. **Total cost the 24 month programme. ^60 credit top up module.

Faculty of Health and Life Sciences Continued

Programme	Home/ EU fees	Overseas fees	Full-time	Part-time	Campus
Institute of Ageing and Chronic Disease					
Clinical Sciences MRes (pathways in Clinical Infection and Global Health, Emerging and Zoonotic Infections, Eye and Vision Science, Infection Immunology, Microbial Pathogenesis, Musculoskeletal Biology, Neurological Infections, Obesity and Endocrinology, One Health, Translation Bacteriology, Veterinary Science)	£4,327*	£22,000*	12 months	24 months	Liverpool
Musculoskeletal Ageing MRes	£4,327*	£22,000*	12 months		Liverpool
Institute of Integrative Biology					
Advanced Biological Sciences MRes	£4,327*	£22,000*	12 months	24 months	Liverpool
Institute of Infection and Global Health					
Clinical Sciences MRes	£4,327*	£22,000*	12 months	24 months	Liverpool
Institute of Translational Medicine					
Biomedical Sciences and Translational Medicine MRes	£4,327*	£22,000*	12 months		Liverpool
Life Sciences					
Advanced Biological Sciences MSc (pathways in Animal Sciences, Bioinformatics, Biotechnology, Cell Signalling, Chemical Biology, Conservation Biology, Evolution and Behavioural Biology, Functional and Comparative Genomics, Host: Parasite Biology, Human Immunity, Microbiology, Molecular Oncology, Plant Sciences, Structural Biology, Sustainable Food Systems)	£9,300	£20,800	12 months	24 months	Liverpool
Medicine					
Master of Public Health MPH	£9,350	£20,450	12 months	24-36 months	Liverpool
Renal Transplantation Science MSc/PGDip/PGCert	See online	See online		Flexible	Online
Psychology					
Doctor of Clinical Psychology DClinPsy	See online	See online	36 months		Liverpool
Investigative and Forensic Psychology MSc	£9,350	£19,950	12 months		Liverpool
Research Methods in Psychology MSc	£9,100	£19,950	12 months		Liverpool
Veterinary Science					
Bovine Reproduction DBR	£10,700	£22,400		24 months	Liverpool
Certificate in Advanced Veterinary Practice CertAVP	See online	See online		Flexible	Online
Veterinary Business Management CertVBM	See online	See online		Flexible	Online
Veterinary Physiotherapy MSc/PGDip	See online	See online		Flexible	Online
Veterinary Professional Studies MSc/PGDip/PGCert	See online	See online		Flexible	Online

*Please note the fee shown for MRes and DDSc programmes are for entry 2019/20 and will rise for entry 2020/21.
**Total cost the 24 month programme. ^60 credit top up module.

Contact us

Enquiries Team

Our dedicated central enquiries team can help with all your queries about becoming a University of Liverpool student, and with questions regarding your application.



Please feel free to call us on
T: +44 (0)151 794 5927 and speak to one of our advisers. Our lines are open Monday to Friday, 9am to 5pm.



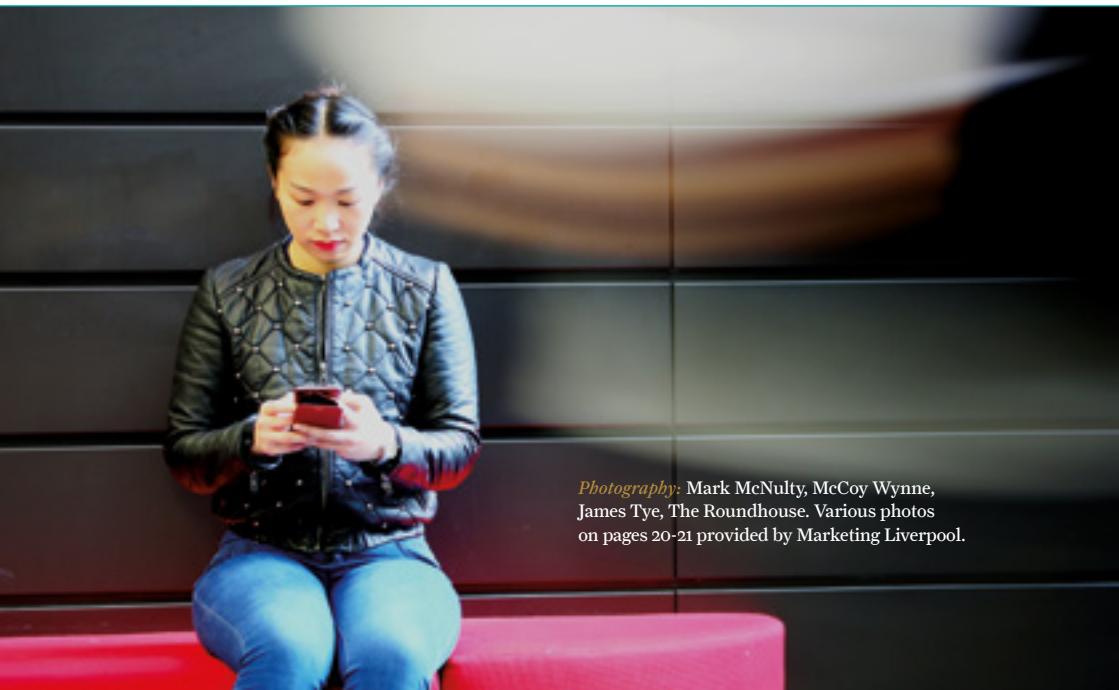
You can also reach us at
E: pgrecruitment@liverpool.ac.uk



View frequently asked questions, ask your own question or chat to us live at <http://ask.liv.ac.uk>

The best thing about my course is that every student completes an internship in different cultural institutions as part of the programme. This not only complements our theory study but also gives students work experience opportunities.

Yiwen Li
Art, Aesthetics and Cultural Institutions MA



Photography: Mark McNulty, McCoy Wynne, James Tye, The Roundhouse. Various photos on pages 20-21 provided by Marketing Liverpool.

We are different aspirations, and unique journeys.
Far-reaching ideas that tackle the big questions,
and personal breakthroughs that transform lives.
Study with us, and achieve your own way.

Master's Programmes

The University of Liverpool L69 7ZX
liverpool.ac.uk/study/postgraduate-taught

