



UNIVERSITY OF
LIVERPOOL

.....

Postgraduate *Prospectus* 2017



LIFE CHANGING
World Shaping

For
advancement
of learning
ennoblement
of life

A decorative, light blue swirl graphic is positioned on the left side of the text, partially overlapping the words 'of' and 'ennoblement'.

Inspiring people to learn and achieve, we help them make the most of life. And addressing some of the world's toughest challenges, we help make life better for people everywhere. Here you can do things you may never have thought possible. Because, just like the city of Liverpool, we celebrate individuality and ingenuity, energy and enterprise; and we see how the ideas of one person can reverberate around the world.

Life Changing, World Shaping



At the University of Liverpool there is a large group of active researchers engaged in pursuing fundamental, strategic and applied research, addressing many of the grand challenges that confront society and our planet. This research activity attracts around £115 million per year in external research grants and contracts. Our stimulating environment provides excellent research opportunities for postgraduate students and enhances the quality of the wide range of taught programmes which we offer at postgraduate level. I can assure you that if you decide to undertake postgraduate study at the University of Liverpool you will be joining a globally connected academic community where the ambitions of postgraduate students are realised.

Professor Janet Beer
Vice-Chancellor

| | |
|--|------------|
| <i>Progress to Postgraduate</i> | 06 |
| <i>International community</i> | 12 |
| <i>Visiting the University</i> | 18 |
| <i>Life on campus</i> | 20 |
| Your future career | 22 |
| Learning resources | 24 |
| Your support network | 25 |
| Accommodation | 26 |
| Sport Liverpool | 28 |
| The Liverpool Guild of Students | 29 |
| Alumni | 29 |
| <i>Our city</i> | 32 |
| <i>Faculty of Humanities and Social Sciences</i> | 38 |
| <i>Faculty of Science and Engineering</i> | 40 |
| <i>Faculty of Health and Life Sciences</i> | 42 |
| <i>Programmes of study</i> | 44 |
| <i>Taught programmes</i> | 46 |
| <i>Research programmes</i> | 98 |
| <i>Index of self-funded research programmes</i> | 100 |
| <i>How to apply</i> | 102 |
| <i>Terms and conditions</i> | 103 |
| <i>Campus map</i> | 104 |
| <i>Index</i> | 106 |

Taught programmes

| | |
|--|-----------|
| Archaeology, Classics and Egyptology | 46 |
| Architecture | 48 |
| Chemistry | 51 |
| Communication and Media | 52 |
| Computer Science | 54 |
| Dentistry | 56 |
| Earth Sciences | 58 |
| Ecology and Marine Biology | 59 |
| Electrical Engineering and Electronics | 60 |
| Engineering | 62 |
| English | 64 |
| Geography | 66 |
| Health Sciences | 68 |
| History | 70 |
| Irish Studies | 72 |
| Law | 74 |
| Life Sciences | 76 |
| Management | 77 |
| Mathematical Sciences | 82 |
| Medicine | 83 |
| Modern Languages and Cultures | 85 |
| Music | 86 |
| Ocean Sciences | 87 |
| Philosophy | 88 |
| Physics | 89 |
| Planning | 90 |
| Politics | 92 |
| Psychology | 93 |
| Sociology, Social Policy and Criminology | 94 |
| Veterinary Science | 96 |

Contacts

General Contact Information

T: +44 (0)151 794 2000
www.liverpool.ac.uk

Student Recruitment Enquiries

T: +44 (0)151 794 5927
E: pgrecruitment@liverpool.ac.uk
http://ask.liv.ac.uk

Induction and Welcome Week

18 September – 24 September 2017

Teaching Year 2017/2018

25 September – 15 December 2017
Exams: 15 January – 26 January 2018
29 January – 16 March 2018
9 April – 11 May 2018
Exams: 21 May – 1 June 2018

Semester Dates

Induction and Welcome Week:
18 September – 24 September 2017
Semester One:
25 September 2017 – 26 January 2018
Semester Two:
29 January – 1 June 2018

Sections of this prospectus can be made available in other formats, please contact:
T: +44 (0)151 794 5927

Prospectus Contributors

Produced by External Relations
Marketing and Communications,
University of Liverpool

Photography: Mark McNulty,
McCoy Wynne, The Roundhouse,
Shahid Khan

Design: The Roundhouse,
Newcastle upon Tyne

Printing: A McLay & Co Ltd, Cardiff
Published: July 2016

Copyright © 2016
The University of Liverpool
All rights reserved

A person wearing a blue protective suit, a white hairnet, and a white face mask is looking through a circular opening. The person is holding a clipboard and a pen. The background is dark and industrial, with some mechanical parts visible. The word "challenge" is overlaid in large white letters across the bottom of the image.

challenge

We engage in ground-breaking research that addresses some of the world's toughest challenges. By joining a research-led university you will benefit from a high-quality education, learning from inspirational figures who will challenge and encourage you throughout your studies.

nging

Progress to Postgraduate;

Get to where *you want to be*

At Liverpool, you'll gain a postgraduate qualification that is valued worldwide. Whether you want to get that perfect job, become an expert in the subject you're passionate about, progress to postgraduate research or become more employable, a postgraduate qualification from the University of Liverpool can help you to define yourself and stand out from the crowd.





We offer a myriad of postgraduate taught and research options at Liverpool, whether you're building on your undergraduate subject or switching discipline. We also offer a range of study options; full-time, part-time, Continuing Professional Development (CPD), on campus in Liverpool, London or China and online.

Be part of a dynamic and vibrant research environment

As a member of the Russell Group (the prestigious top 24 research-intensive institutions in the UK) and associated with nine Nobel prize winners to date, Liverpool has a rich heritage in pioneering research.

Our research and discoveries ultimately contribute to society, the economy and culture – and at a global level. In the latest Research Excellence Framework 2014, seven of our subjects ranked in the top 10 while we are ranked 20th overall in the UK for research power, a demonstration of both excellence and impact in research.

Our research was rated top in the UK for Chemistry and Computer Science, while Engineering (General Engineering), English, Architecture and Veterinary Science (Agriculture, Veterinary and Food Science) scooped top 10 positions. In total, 81% of the University's research is ranked in the highest categories of 4* (world-leading) and 3* (internationally excellent).

As a postgraduate research student you will be welcomed into our community and encouraged to become an active member of our Liverpool Doctoral College. See page 98 for more information or visit www.liverpool.ac.uk/doctoral-college

Experience excellence in teaching and learning

Our teaching, like our research, is at the forefront of knowledge and is delivered by leading and internationally renowned academics. As a taught postgraduate you will be learning about advances at the forefront of your subject and benefit from being part of a department that will be contributing to these developments.

Be part of world class facilities in a world famous city

Liverpool is a vibrant, creative, and cosmopolitan port-city that was ranked third in the Rough Guides top 10 world cities 2014. It is also one of the most cost effective student cities in the UK. Our modern 100-acre campus is situated in the heart of the city's Knowledge Quarter with £600 million alone being invested in groundbreaking learning and research facilities over the next 10 years.

We are
ranked 20th
in the UK for
research
power

▶ See what our postgraduates think of studying at Liverpool at www.liverpool.ac.uk/study/postgraduate/why

The University of Liverpool in London

Our global focus and pioneering approach led us to open a campus in the heart of the UK's capital, London. Close to the financial centre of the city, the University of Liverpool's London Campus offers prospective students a range of opportunities to maximise their professional impact. The campus benefits from a suite of vocationally focused programmes: Executive Education and Continuing Professional Development (CPD) courses that are aligned to the professions in the city of London in the areas of Finance, Accounting, Business and Communication, Design, Health and Leadership Management.

Our London Campus is:

Professional

You can boost your employability through a portfolio of professionally orientated programmes. In Accounting and Finance, our unique blend of professional and academic qualifications enables you to fast-track your future.

Global

The campus is another key hub in the University's global network and attitude. Close to the city, it is perfectly located for professionals.



Connected

You will benefit from excellent links to London based employers, industry, and third-sector institutions, exemplified by support from the Institute of Chartered Accountants in England and Wales (ICAEW) for our flagship Accounting programme.

Premium

Learning at Finsbury Square is supported by premium facilities, developed with the professions in mind.

Career focused

You will have access to a range of careers support from an award-winning careers and employability team, including webinars, on-site events and training, all designed to help your aspirations become a reality.

Available programmes are listed in this prospectus, but for the latest information, including new programmes, visit www.liverpool.ac.uk/study/london



Achieving your career goals with online learning

As Europe's largest provider of online degrees through our partnership with Laureate Online, we offer 36 fully online master's and doctoral degrees in a flexible, international and collaborative learning environment aimed at helping global working professionals to enhance their career prospects.

Available programmes are listed in this prospectus, but for more information visit www.liverpool.ac.uk/study/online



Our connections worldwide will give you incredible opportunities to study abroad and meet people from around the globe.

XJTLU is based in the world heritage city of Suzhou, which has a population of four million and is located half an hour from Shanghai by bullet train. The campus is located in Suzhou Industrial Park (SIP), one of Asia's most successful business parks – a hub for foreign investors, and home to 3,300 international organisations, including 84 Fortune 500 companies. SIP provides opportunities for extensive research and knowledge exchange initiatives.

For more information about studying for a University of Liverpool in China degree and to see the full list of postgraduate programmes available, visit www.xjtlu.edu.cn/en



A Liverpool degree in China

In 2006 the University opened Xi'an Jiaotong-Liverpool University (XJTLU) in partnership with Xi'an Jiaotong University – a top 10 university in China. XJTLU has been a phenomenal success and has grown rapidly since it was established, with more than 7,400 students now studying subjects including Computing, Maths, Engineering, Architecture, Biological and Chemical Sciences, Business and Civic Design.

XJTLU offers a unique international educational experience, and brings together excellent research practice and expertise from both institutions, giving students the skills and knowledge they need to secure careers in a global marketplace.

Postgraduate study at XJTLU leads to a doctoral or master's degree from the University of Liverpool – a Liverpool experience in China. There are a range of market-led taught programmes to choose from as well as opportunities for doctoral studies in XJTLU's priority research areas such as health technologies, sustainable urbanisation and nanotechnology.



Continuing Professional Development

Continuing Professional Development (CPD) at the University of Liverpool provides opportunities for individuals and organisations alike to gain maximum benefit from professional courses and executive training programmes, enabling them to remain at the top of their game in today's fast changing and competitive working environment.

The University's research-led approach to CPD ensures that whatever the format of the programme, it will be informed by leading edge knowledge on the subject and introduce the latest high level skills. We also have the capability to develop unique training courses, bespoke to your organisation's specific needs. Through drawing on expertise from a range of University disciplines, we can plan the perfect programme for you.

For more information visit www.liverpool.ac.uk/cpd

Ambit



ious

We are a global university with partnerships across the world, from our partner university in China to our campus in London. Join the University of Liverpool and these networks will open opportunities to travel, study abroad and make your own worldwide connections.

International. *community*

As a truly global university we welcome students from over 127 countries around the world. If you join us you will enjoy an amazing, life changing study experience in a diverse international community with a rich cultural mix.

Our International Recruitment, Relations and Study Abroad Team (IRRSA) is responsible for providing you with information and advice before you get to the University. This includes guiding you through our entry requirements and the admissions process, informing you of opportunities for scholarships and sending relevant information at the right time to help you prepare for your studies in Liverpool.

IRRSA's website www.liverpool.ac.uk/international aims to provide answers to all the questions you may have as an international applicant. If you can't find the information you need on our international pages you can go to <http://ask.liv.ac.uk> to ask any specific questions you might have.

We've also created individual pages for different countries that explain which local qualifications are acceptable for entry to postgraduate study www.liverpool.ac.uk/study/international/countries

Once you arrive in Liverpool, we are sure you'll feel at home in our friendly and welcoming city, which has a global reputation for sport, music, art and a wealth of culture for you to explore.

Liverpool is a traditional port-city so many communities from around the world have established themselves here, making it truly cosmopolitan.

- Liverpool was home to the first Mosque in the UK
- The University has an active Islamic Society who host Friday prayers in the new purpose built prayer room and break fast together during Ramadan
- Halal meat is widely available throughout the city
- Liverpool has the oldest Chinatown in Europe and Chinese New Year is celebrated in style each year, featuring street entertainers, music and dance
- Many supermarkets in the city sell international ingredients
- Home to Britain's most established African community

- Each year Liverpool hosts Africa Oye! – the biggest live free African music festival in Britain
- The Malay Speaking Circle unites Malay speakers from Malaysia, Indonesia, Brunei and Thailand each month
- Brazilica Music Festival is held in Liverpool every year.

Induction and Welcome Week

We offer a free 'meet and greet' service including registration to all our international students arriving at Manchester Airport over a three day period in September. Taking advantage of this service will ensure you arrive in Liverpool in time to attend important induction activities during Welcome Week.

In addition to departmental events, our International Support Team offer important sessions for international students such as BRP collection, police registration, specialist talks, tours of the campus and city as well as a number of fun social events. This is a great opportunity for you to meet people, make new friends and adjust to life in the UK.



Explore
Challenge
Enrich
Inspire

We currently have
7,700
*international and
EU students*

Entry requirements

We recognise a wide range of international qualifications for direct entry on to our postgraduate programmes. To find out if your qualifications are appropriate for direct entry to our programmes see www.liverpool.ac.uk/international/countries

However, because many countries have a different education system to that of the UK, you may require further preparation before you can start your main programme of study in the UK.

Graduate Pathway programmes

In conjunction with our partner organisations, Kaplan International Colleges, we offer a number of pathway routes that provide an entry route on to many of our programmes if your existing qualifications do not meet our current admissions requirements.

Pre-Master's programmes

International students not eligible for direct entry to our taught master's may first complete the Graduate Diploma at Liverpool International College, which is based on the University campus.

Two different pathways are available leading to a range of our postgraduate taught programmes:

- Graduate Diploma in Business, Law and Social Sciences
- Graduate Diploma in Science and Engineering.

Upon successful completion of the Graduate Diploma programme to the required level, you are guaranteed admission to a postgraduate taught degree at the University of Liverpool. For more information please visit www.liverpool.ac.uk/lic

Pre-Doctorate programmes

The University's partner, Kaplan International Colleges has also created a Pre-Doctorate at its London College. This is a special course designed exclusively for international students wishing to study a doctoral degree in the UK. The Pre-Doctorate equips you with a broad set of academic and research skills specifically needed for a doctoral degree. You will be supported throughout the course to develop key knowledge of the doctorate research and selection process, and to build a range of core skills to successfully apply and progress to doctoral study at a UK university, including the University of Liverpool. For more information visit www.kic.org.uk/pathways/pre-doctorate

English language requirements

As well as meeting academic requirements, students applying to study at Liverpool must demonstrate that they are competent in the use of English language and satisfy the University's English language requirements.

Our English Language Centre (ELC) is a specialist English language facility for international students that offers a range of pre-sessional EAP programmes if you need to improve your English before you start your main programme of study. ELC also provides free English classes throughout the academic year to ensure you make the most of your studies, visit www.liverpool.ac.uk/english-language-centre

T: +44 (0)151 794 2722
E: elc@liverpool.ac.uk

Visas

Most international students will need a visa to study in the UK. The UK operates a points based system (PBS) visa process. For official advice on how to obtain a visa to study in the UK please see the UK Visa and Immigration website at www.gov.uk/visas-immigration

During the application process, you will receive further information and advice from the University to help you prepare your visa application.

Further information

IRRSA also produce an International Guide that provides more detailed information on issues specifically relating to international postgraduate students. This is available online at www.liverpool.ac.uk/study/international/coming-to-liverpool/ or you can request a hard copy from the team.

International Recruitment, Relations and Study Abroad Team

University of Liverpool
 Foundation Building
 Brownlow Hill
 Liverpool L69 7ZX
 United Kingdom

T: +44 (0)151 794 6730
F: +44 (0)151 794 6733
E: irro@liverpool.ac.uk

www.liverpool.ac.uk/international
Twitter: @livuniglobal
www.facebook.com/liverpooluniversity



ng

We provide our staff and students with the best intellectual, social and physical environment in which to conduct research, teach and learn. You will benefit from our supportive, high-quality facilities designed to enhance both your time here and future after you graduate.



Liverpool
Campus
Postgraduate
Open Day:
22 March 2017

Visiting^{the} University

Postgraduate Open Days

The University holds its main Postgraduate Open Day at the Liverpool Campus each year where you can hear from speakers about topics such as fees and finance, applying, accommodation and careers and employability. There's also a central exhibition of academic departments where you can chat to staff and current students about specific course details.

Many of our departments, including our London Campus, host smaller postgraduate taught and research recruitment events throughout the year too. For further details, visit www.liverpool.ac.uk/study/postgraduate/events

Personalised visits

We appreciate that making the right decision about postgraduate study requires extensive research. Choosing the right university and programme is key. That's why we offer personalised visits to our campuses (Liverpool and London), on an individual or small group basis, so you can get the answers to your specific questions and see the facilities and buildings that are important to you.

To book a visit at our Liverpool Campus, visit www.liverpool.ac.uk/study/postgraduate/visit-us/

To book a visit at our London Campus, visit www.liverpool.ac.uk/london/visit-us/

Visit us where you are

Each year our recruitment teams attend events all over the globe to talk to prospective students about our exciting study options. If we're at an event near you, we'd love to see you there. For a full list of UK events we'll be attending, see www.liverpool.ac.uk/study/international/events

For a full list of international events we'll be attending, see www.liverpool.ac.uk/study/international/news

Virtual Open Day

If you're unable to get to our Liverpool or London Campuses or would like to look around before you arrive, our Virtual Open Day is an ideal way for you to explore the campus from wherever you are in the world. Visit www.liverpool.ac.uk/virtual-open-day/

Many Schools and Departments run postgraduate taught and research information events throughout the year, both on-campus (in Liverpool, London and China) and online. Keep checking www.liverpool.ac.uk/study/postgraduate/events for details.



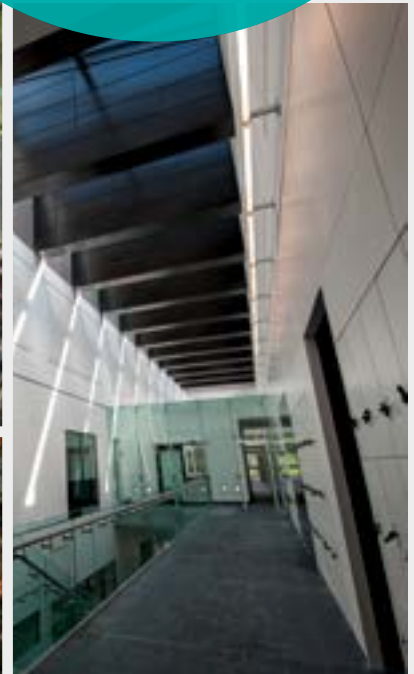


Life *on* *campus*





Our modern 100 acre campus is situated in the heart of the city's Knowledge Quarter with £600 million alone being invested in facilities over the next 10 years.





Your future career

Going to university represents a significant investment for students, particularly postgraduates. To give you the best start in the job market, we have developed a well connected, expert and accessible Careers & Employability Service.





For postgraduates, the Careers & Employability Service offers a comprehensive range of information, advice and guidance. Not only do we provide resources to help you research and develop your future career, but we also work extensively with local, national and international recruiters. Whatever your ambition, we're here to help.

Some of the services we currently offer include:

- Access to job vacancies and internships – both inside and outside academia
- Work-experience opportunities in Liverpool, across the UK and overseas
- Specialist help with CVs, applications and interviews, including our practice interview video facility
- Opportunities to meet organisations keen to recruit Liverpool postgraduates
- Individually tailored career advice and guidance.

Through our 'Careers Hub' portal, and via our Central Careers Resource Centre, you can access information on thousands of career options and opportunities – both in the UK and overseas.

If you are a research postgraduate, www.vitae.ac.uk is a site that helps postgraduate researchers to make the successful transition from their PhD studies to their future careers.

Employability and enterprise development

Each year, a programme of careers-related talks, seminars, fairs and workshops is held on topics such as completing applications and creating CVs, developing your employability studies, as well as comprehensive sector-specific information. If you are considering your own business, we have a comprehensive enterprise programme including workshops and one-to-one coaching.

Internships

We can offer you opportunities to apply for a range of local and national work experience and internship programmes through our Liverpool Interns Scheme.

Employment prospects

As you would expect from an internationally renowned university, our postgraduates secure employment in a range of public and private sector organisations in both the UK and overseas.

For more information, please contact our help desk or visit our website.

Careers & Employability Service

T: +44 (0)151 794 4647

E: careers@liverpool.ac.uk

www.liverpool.ac.uk/careers



@livunicareers



@liverpoolfairs



www.facebook.com/livunicareers



www.facebook.com

/#!/liverpool.fairs?sk=wall



Learning resources

We have impressive
on campus learning
resources available to
all our postgraduate
students.

Library

www.liverpool.ac.uk/library

We have:

- Two libraries located on campus
- 24 hour term-time opening
- Over 1.9 million books and 620,000 electronic books
- 85,200 electronic journals
- Special collections including the largest Science Fiction collection in Europe and rare books and manuscripts
- Dedicated postgraduate study space.

Computing services

www.liverpool.ac.uk/csd

We have:

- 2,400 PCs across campus
- High speed Wi-Fi
- Access to our services online wherever you are
- 24 hour service desk
- Free email, file space and software
- Access course materials, submit assessments, contribute to discussions and group assignments through our virtual learning environment 'VITAL'.

Learn a language

www.liverpool.ac.uk/conted

Through our Continuing Education Modern Languages programme, you can learn a wide range of languages from Arabic to Russian.

*We have over 2,400
student PC's on campus
and provide access to
services via mobile devices
to support your studies
anytime, anywhere.*

Duncan McCahill
Operations Manager
Computing Services



Your support network

Whatever help you may need at any point in your student life, we have a network of dedicated professionals to support you.

www.liverpool.ac.uk/studentsupport

Student Services Centre

Our Student Services Centre is the hub for all support services – if you are not sure where to go, this team will point you in the right direction. See www.liverpool.ac.uk/studentsupport

Money Advice and Guidance

The team can advise you on all aspects of your statutory funding and provide assistance for students in financial hardship. We can also offer debt advice and budgeting sessions. See www.liverpool.ac.uk/studentsupport/finance

Health

Brownlow Health is a full general practice on campus offering medical services to students. See www.brownlowhealth.co.uk

Religion

There are places of worship for virtually all faiths in Liverpool and we can help you find them. Faith Express is the hub for all faiths on campus. See www.faithexpress.net

Counselling Service

Our experienced counsellors run a drop-in service where you can talk about any issues that may be affecting your studies or general wellbeing. See www.liverpool.ac.uk/student-support/counselling

Childcare

There is a Children's Centre on campus, which also provides playschemes during the school holidays. See www.kidsinbloom.co.uk/portfolio/university-of-liverpool-nursery/

Mental Health Advisory Service

The Mental Health Advisory Service is available to offer confidential support to students with significant and complex mental health needs, as well as consultation and training to staff and students.

The service can offer support to you within the context of your academic studies but may also link with external services where appropriate to assist you in gaining relevant support. See www.liverpool.ac.uk/studentsupport/mentalhealth

Disability Advice and Guidance

We work closely with academic departments and students to ensure you can be supported as fully as possible. Every student has their own needs and we will work with you to establish a support system that works for you. If you would like to discuss your needs, please call T: +44 (0)151 794 5863, E: disteam@liverpool.ac.uk or visit www.liverpool.ac.uk/studentsupport/disability

Support for international students

Our International Advice and Guidance team works with students, academic departments and The Guild to support you. See www.liverpool.ac.uk/studentsupport/ist for more information.

We are fortunate in Liverpool to have a wide variety of accommodation for our postgraduate students, with good facilities and at reasonable prices. Postgraduate accommodation is all located on campus and is offered on a self-catering basis with single-occupancy private rooms (some en-suite).



Accomm



Self-catered campus residences

Postgraduate student accommodation is available at our Vine Court and Philharmonic Court Residences. Vine Court, the University's £44 million eco-residences, are a model of sustainable building and include solar heating, air source heat pumps, rainwater harvesting and systems to monitor energy consumption by room. These features ensure that, in addition to providing you with first class living accommodation, Vine Court is among the most energy efficient, sustainable university residences in the country.

Newly opened Philharmonic Court offers 350 self-catered single en-suite rooms. The residence itself is gated, with a manned 24hr reception and on-site residential advisor team.

The campus facilities, including sports centre, libraries and Guild, are close by to both residences and there are plenty of local bars, cafés and shops for your convenience.



odation

Residential adviser opportunities

You can live at the heart of both our award winning campus and amazing city by becoming one of our Residential Advisers and save a minimum of £4000 per year on accommodation! You'll provide support and guidance to our undergraduate students, including those living in our brand new £50 million Crown Place at the heart of the Liverpool Campus. This support could involve dealing with anything from lost keys or illness to well being concerns or news of a family bereavement.

We will provide you with the necessary training and you will have 24/7 back-up from our professional student support teams. In return we can offer you accommodation at a reduced rate as well as the opportunity to gain some valuable experience to benefit your future career.

For more information, visit www.liverpool.ac.uk/accommodation/support/residential-adviser-team/

Accommodation guarantee

The University guarantees to provide single international students with accommodation provided that they have applied online through the Accommodation website by 31 July. Single European and UK students who apply by this date can normally be offered similar accommodation on the same basis. A booking fee (£150) is payable when a room offer is made. All single postgraduates applying after the end of July will be assisted where at all possible.

Self-contained accommodation

For information regarding private housing in Liverpool please contact Liverpool Student Homes, visit www.liverpoolstudenthomes.org/

Privately rented accommodation

Liverpool is a large city with a wide variety of rented accommodation available. Type and standard of accommodation in Liverpool varies considerably – and so does the cost. If possible, you should come to Liverpool a few weeks before your programme starts to look for a suitable place.

More information

Accommodation Office

Student Services Centre
150 Mount Pleasant
Liverpool L69 3GD

T: +44 (0)151 795 0319

E: accommodation@liverpool.ac.uk

www.liverpool.ac.uk/accommodation

Liverpool Student Homes

140 Mount Pleasant
Liverpool L3 5SR

T: +44 (0)151 794 3296

E: lsh@liverpool.ac.uk

www.liverpoolstudenthomes.org/



Sport Liverpool

Whether you take part in organised activities or independent exercise, our sports services provide a great way to meet people, get connected and achieve a higher level of fitness and general wellbeing.



Sport at Liverpool is available at three levels so there is something for everyone:

Club Sport. Join one of our 47 student-led sport clubs most of which represent us in the British Universities and Colleges Sport leagues (BUCS) and with some clubs accepting beginners this is your chance to try something completely new!

Campus Sport. Campus Sport provides the opportunity to take part in sport at a recreational level. There are internal leagues in football, rugby, netball and hockey and also casual opportunities to play organised badminton and basketball.

The University's Campus Football programme is the first in England to be accredited through the FA's Charter Standard.

Casual. Keep fit and enjoy the sports that you love on an informal basis at your own pace.

Sports and Fitness Centre

Our Sports and Fitness Centre at the heart of campus offers a wide variety of facilities and services including:

- 25 metre swimming pool and shallow water area
- Two sports halls
- Four squash courts
- Fitness suite
- Weight training rooms
- Dance and spinning studios
- Boulder wall
- Sports Café.

We also organise daily sign-up/drop-in classes for all levels of ability including spinning, pilates and combat training and a five-a-side league.

Wyncote

Few university sports grounds can match the number of quality outdoor sports facilities we have at the University of Liverpool, including:

- 10 senior football and four rugby pitches
- One lacrosse pitch
- Two hockey/football pitches (full-size, sand-dressed, all-weather pitches)
- Floodlit rugby training area.

Outdoor Activity Base

In the heart of the Snowdonia National Park in the village of Deiniolen, near Llanberis, our Outdoor Activity Base offers basic accommodation for up to 18 people in two dormitories, perfect for an outdoor expedition around this beautiful part of North Wales. It is available for booking on a first come, first served basis, throughout the year.

For more information visit
www.liverpool.ac.uk/sports

Liverpool Guild of Students



As soon as you join the University of Liverpool, you automatically become a member of the Guild of Students. We are led by students, and we make sure you're at the heart of everything we do.

We offer:

Opportunities to boost your skills. We have 230 student-run societies which, as a postgraduate student, you can get involved in, not to mention our volunteer programmes and student-staff roles.

A fun and vibrant place where you can try new things and meet new people. Take part in Give it a Go trips, enjoy live music gigs and make the most of our other good quality, affordable services.

Campaigning for positive change. We are a democratic organisation and we listen to students to fight for the things which matter most to you. As our logo suggests, we fly the flag and provide effective representation for all students. For more information visit www.liverpoolguild.org

Liverpool Guild of Students is the representative body for students at the University of Liverpool. It is led by students for students. Come to Liverpool, be part of the Guild and have the time of your life!

Harry Anderson
President – Liverpool Guild of Students

Alumni

When you graduate you join a global community of more than 200,000 University of Liverpool alumni with access to a network of Ambassadors and Alumni Associations designed to support you wherever you are in the world.

Our alumni programme is not just designed to assist you during your transition from student to graduate but to help you to build a rewarding lifelong relationship with the University. With our support you will be able to forge relationships that can help to develop your career, opening up new opportunities with like-minded professionals, forming new friendships, and building invaluable social networks.

You will also have access to a wide range of benefits and services, including Continuing Professional Development, volunteering opportunities, and exclusive discounts and event invitations.

Liverpool is also one of the only universities in the Russell Group that offers free online journal access, with both Emerald and JSTOR available through the alumni website. On top of all this, you will receive our annual Alumni magazine and a regular e-newsletter. To find out more visit www.liverpool.ac.uk/alumni



A nighttime photograph of a city waterfront. In the center, a large, brightly lit Ferris wheel stands out against a dark blue sky with scattered clouds. To the right, a long, multi-story brick building with many lit windows reflects in the water. To the left, modern buildings with glass facades are also visible. In the foreground, a canal with several boats, including a blue and white boat, is visible. The word "Spirit" is overlaid in a large, white, stylized font across the bottom half of the image.

Spirit

The city of Liverpool shapes the University through its dynamic spirit, global outlook and pioneering opportunities and we shape the city through our extensive collaborative local network.

zed



Our *city*





Energetic,
spirited,
beautiful,
creative,
ambitious...

there is nowhere
quite like Liverpool.





Art and museums

With more galleries and museums than any city outside London, Liverpool is an 'art-lovers' paradise; from old masters to modern masterpieces and cutting-edge film, photography and visual arts. Not to mention the largest international contemporary art festival in the UK. Many of the city's museums celebrate Liverpool's rich and varied history.

- Walker Art Gallery
- Tate Liverpool
- FACT
- Open Eye Gallery
- Bluecoat
- Liverpool Biennial
- Museum of Liverpool
- The International Slavery Museum
- Merseyside Maritime Museum
- World Museum

Theatre and performance

Turn a corner in Liverpool and you will stumble across a theatre venue; the most renowned of which stage premieres by both local and international writers and host popular touring West End productions, including *The Lion King*, *Wicked* and *Mamma Mia!*

- Everyman
- Liverpool Playhouse
- Liverpool Empire
- Unity Theatre

Music

Whether you prefer to see big names in stadium size venues or the newest unknown talent in underground clubs, Liverpool is the place to be. Classical music fans should not miss the world renowned Royal Liverpool Philharmonic Orchestra, led by the Chief Conductor and honorary Professor of the University of Liverpool, Vasily Petrenko.

- Echo Arena Liverpool
- Liverpool Philharmonic
- LEAF
- Camp and Furnace
- The Shipping Forecast
- The Guild
- The Kazimier
- The Cavern Club

The Everyman Theatre was awarded the RIBA Stirling Prize for best new building of the year 2014.



Festivals

Year-round Liverpool draws crowds to its internationally acclaimed music and cultural festivals. You can be sure Liverpool is always celebrating something.

- Liverpool Sound City
- Liverpool International Music Festival
- Africa Oyé
- Creamfields
- Brouhaha
- Homotopia
- Brasília
- Liverpool Pride
- Mersey River Festival

Sport

Liverpool is synonymous with sport. Home to two of the Premiership's biggest football teams, both home grounds are a mile or so from the city centre. Aintree Racecourse is home to the one of the highlights of the annual horse racing calendar, the Grand National. Locally there is county cricket, golf on "England's Golf Coast", Rugby League at St Helens and Widnes, and ample opportunities for water sports on the coastal outskirts of the city.

- Liverpool FC
- Everton FC
- Aintree Racecourse
- Liverpool Cricket Club
- Royal Birkdale
- Royal Liverpool Golf Club

Shopping

Liverpool is a shopping destination to rival any city. Liverpool One houses 160 shops that are open late into the evening, along with restaurants and a multiplex cinema. Nearby, there is high-end and designer fashion at the Met Quarter and Cavern Walks and just a short walk from there you can find small, eclectic boutiques and quirky shops, offering a range of styles from urban streetwear to vintage.

- Liverpool ONE
- Met Quarter
- Cavern Walks
- Grand Central
- Bold Street

Lonely Planet rated Bold Street as one of the best shopping streets in the UK 2014.

Liverpool is a truly great city, one of the most vibrant and creative in the UK. Small enough to be manageable, yet large enough to have all the amenities you would expect in a large city, Liverpool is a lively, friendly and still relatively inexpensive place to live.

People feel at home, instantly, in Liverpool. We're a human sized city, with lungfuls of fresh air delivered straight in from the sea, breezy promenades to stroll along, and leafy green parks to stretch out in. www.itsliverpool.com



Eating out

There is an incredible range of cafés, bistros and restaurants in Liverpool appealing to all tastes and budgets. Aside from the many eateries dotted around the campus, just on the outskirts of campus there's hearty food to be had in chilled out, bohemian surroundings of Hope Street. Or, enjoy fine dining alongside breath taking 360° views across the city and over to the Wirral Peninsula from Panoramic 34, on the 34th floor of West Tower.

- Chinatown
- Panoramic 34
- The Quarter
- Host
- Kimo's
- 60 Hope Street
- Pen Factory

Nightlife

With over 250 city centre pubs and clubs, it is no surprise that the users of Trip Advisor voted Liverpool as Britain's Best Nightlife Destination – everything is within walking distance in the city centre.

- Shipping Forecast
- Pima at the Hilton
- Heebie Jeebies
- Parr Street Studios
- Palm Sugar
- 24 Kitchen Street

Relaxing

In the south of the city you will find Calderstones and Sefton Parks and Lark Lane, home to chilled-out bars, restaurants and an eclectic mix of independent shops. Or head to the north of the city to find Formby which offers an unspoilt stretch of National Trust coastline, or to Crosby Beach to see Antony Gormley's 'Another Place' installation of 100 life-size statues.

- Calderstones Park
- Sefton Park
- Lark Lane
- Formby
- Crosby Beach
- Lake District
- Peak District
- North Wales

Two of our recent graduates have developed Independent Liverpool, a 'go-to' guide for everything independent in the city, where members can benefit from discounts and special offers.

www.independent-liverpool.co.uk

Rio... Sarajevo... Liverpool...

Liverpool was ranked 3rd in the *ROUGH GUIDES* top 10 world cities 2014.
www.roughguides.com/best-places/2014/top-10-cities

Faculty of Humanities and Social Sciences

Challenging our world view

The Faculty of Humanities and Social Sciences is an important influencer in the social, political and cultural life of the city region and the UK, and makes a significant contribution to enhancing the University's research profile.

More than

20%

of staff submitting to REF were
early career researchers

Student numbers have grown by

50%

between 2010-2015

The Faculty of Humanities and Social Sciences is made up of:

School of the Arts

- Architecture
- Communication and Media
- English
- Music
- Philosophy

School of Histories, Languages and Cultures

- Archaeology, Classics and Egyptology
- History
- Irish Studies
- Modern Languages and Cultures
- Politics

School of Law and Social Justice

- Law
- Sociology, Social Policy and Criminology

University of Liverpool Management School

Across a broad range of disciplines we explore the impact of human behaviour and structures on the past and the present from diverse viewpoints. We use our knowledge to imagine different futures and explore the choices communities, organisations and governments make. We deploy both intellectual and emotional arguments to communicate our findings, experiences and concerns to enrich and inform society and stimulate the debate on how we can change social, political, economic and cultural behaviour for the better.



The integrity of UK elections

Two studies by Dr Stuart Wilks-Heeg from the School of Histories, Languages and Cultures have explored electoral malpractice and electoral registration. The first study examined the 'modernisation' of UK electoral processes under the Labour government, including the introduction of postal voting on demand. The research demonstrated that electoral fraud was greater than had previously been recognised. Stuart also examined the UK's electoral register, establishing that there had been a long-term decline in the completeness and accuracy of the electoral registers nationally.



Microfinance policy in rural India

Research undertaken by Dr Supriya Garikipati from the Management School has identified that microfinance is most beneficial to women when it enables them to enhance their livelihoods and participate in the local enterprise economy. It also highlighted that more than 80% of the loans in Andhra Pradesh, India, did not meet these conditions.

Using these research findings, Supriya directly lobbied the government of Andhra Pradesh. This has had an impact on banking organisations and other stakeholders within the microfinance industry and led to the introduction of the Livelihood Enhancement Plan (LEP), used at the time of loan application. Supriya's research impacts 500,000 women per year who join the programme, enabling participants to enhance their livelihoods.



The power of digitality

Research by the University's Centre for Architecture and the Visual Arts, and its cultural partners, is investigating the role of digitality (such as computer-aided design, audio-visual quality of space or moving image visualisations) on the design of contemporary urban spaces. Using a range of methods and techniques, including mapping, filming, projecting, 3D animations and augmented reality, the aim is to provide insight into the representation of, and engagement with, architectural and urban forms, narratives and practices.

Faculty of Science and Engineering

True Innovation

The Faculty of Science and Engineering connects research strengths, technologies and experts from a unique, broad mix of disciplines. This allows us to develop innovative solutions and approaches to tackle many of today's complex social, economic and environmental challenges.

637

*postgraduate
research students*

*Highest Science and Technology
Facilities Council grant
portfolio in the UK*

5

*ESPRC-funded Doctoral
Training Centres*

The Faculty of Science and Engineering is made up of:

School of Electrical Engineering, Electronics and Computer Science

- Computer Science
- Electrical Engineering and Electronics

School of Engineering

School of Environmental Sciences

- Earth, Ocean and Ecological Sciences
- Geography and Planning

School of Physical Sciences

- Chemistry
- Mathematical Sciences
- Physics

Our thriving research community enables our experts to explore novel concepts and take their research into new, ground-breaking directions. The outcome of REF 2014 demonstrated growth in world-leading research in the Faculty. Chemistry and Computer Science are ranked 1st in the UK for 4* and 3* research, with much of their research activity classed as world leading. Earth and Ocean Sciences achieved eighth in the sector for the proportion of world-leading publications.



Advanced materials

Liverpool is leading in the design of functional materials, changing the perception of what is possible in the field. Through a series of first-in-class Science and Nature papers we have introduced new classes of materials, and our Centre for Materials Discovery, Materials Innovation Factory and Leverhulme Research Centre developments are revolutionising this exciting area of science.



The Institute for Risk and Uncertainty

The nature and consequences of disasters and real world problems are becoming increasingly complex. To fully understand and address these challenges, we need to work together at the intersection of disciplines.

The Institute for Risk and Uncertainty brings together a multidisciplinary team to offer expertise and methodologies with which to quantify, mitigate and manage risk and uncertainty in many fields and industry sectors. One of its focus areas is the design of mechanisms and structures for optimal sharing of risks and benefits among various parties, for example in large energy projects. The results will provide a basis for informed investment, operating and policy decisions.



The Consumer Data Research Centre

Vast amounts of UK consumer data are generated each day, providing valuable insight to help organisations operate more efficiently. It's not just businesses that benefit. Researchers can utilise data to provide solutions that drive economic growth and improve our society.

Funded as part of a major investment in Big Data research and infrastructure by the Economic and Social Research Council, the University of Liverpool is one of only three sites in the UK to house secure data facilities, allowing staff and students to access a range of big data from within a controlled environment.

Faculty of Health and Life Sciences

Unrivalled expertise

The Faculty of Health and Life Sciences ranks among the top 100 universities in the world for clinical, pre-clinical and health subjects.

£73m

in research funding

200

*publications classed
as world leading in REF 2014*

The Faculty is structured to bring together areas including Biological Sciences, Medicine, Psychology and Veterinary Science and to further promote the interdisciplinary and multidisciplinary approaches which are required for research excellence in the 21st century. The Faculty is made up of eight institutes, five of which house research activities and three lead on teaching and learning, as follows:

Institute of Ageing and Chronic Disease

Institute of Infection and Global Health

Institute of Integrative Biology

Institute of Psychology, Health and Society

Institute of Translational Medicine

Institute of Clinical Sciences

● School of Medicine

● School of Dentistry

● School of Health Sciences

Institute of Veterinary Sciences

Institute of Life and Human Sciences

● School of Life Sciences

● School of Psychology

We offer a first-rate research environment with unrivalled access to technology platforms and academic expertise, and our research continues to grow, with new research funding awards increasing by more than a third to £73 million, including 14 awards valued at greater than £1 million. Through our partnerships with the NHS, industry and academia, we have the scale and expertise to drive future growth, bringing economic benefits and delivering significant improvements in human and animal health.



Personalised Health in Liverpool

We are uniquely positioned as a leader in the research and 'bench-to-bedside' delivery (clinical translation) of Personalised Health thanks to our partnerships and close association with Liverpool Health Partners and its nine Hospital Trusts.

The new Royal Liverpool University Hospital, due to open in July 2017, promises increased opportunities for the University of Liverpool, particularly with the hospital's commitment to hosting a dedicated Biomedical Research Centre and a doubling in size of its MHRA-accredited Phase I Clinical Research Unit.

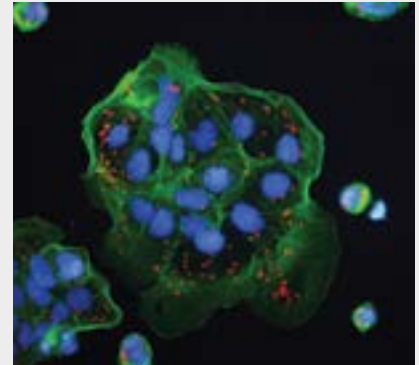
Our current work in Personalised Health research and implementation already benefits the region, while demonstrating the way of the future nationally and internationally.



Identifying new drugs to treat Ebola

Researchers from the Institute of Infection and Global Health, in collaboration with Public Health England, have investigated new ways to identify drugs that could be used to treat Ebola virus infection.

The team looked at which proteins inside a cell are critical for the functions of Ebola virus and are 'hijacked' by the virus to promote infection. Identifying these proteins allowed them find out whether any drugs were already in existence that could block the function of the particular protein. Their recently published research has shown how existing therapeutics can be identified and potentially repurposed for anti-viral therapy.



Developing nanomedicines for HIV therapy

An estimated 34 million people around the world are infected with HIV; however, global manufacturing capacity for some commonly used drugs is insufficient to meet the needs of all patients requiring therapy and there is a lack of suitable formulations for children.

To address this, a team from the Institute of Translational Medicine and the Department of Chemistry are applying nanomedicine formulation strategies to develop the antiretroviral medicines to combat HIV infection that will enable reduced doses by increasing the amount of drug absorbed into the body. Nanomedicines can deliver small quantities of a drug, which has the potential for cost savings, fewer side-effects and the treatment of more patients with existing drug supplies.

Programmes of study

Detailed information about all of our programmes, including research opportunities, are available on our webpages www.liverpool.ac.uk/study/postgraduate



Postgraduate taught programmes

Our on-campus master's programmes; both Master of Arts (MA) and Master of Science (MSc), typically take one year to complete full-time and two years part-time and involve a series of taught modules, delivered through lectures, seminars and practical activities.

You will be assessed by exams, coursework, group projects and a dissertation on the knowledge and skills that you have learned. You are able to apply for some of our programmes at a Postgraduate Certificate (PGCert) or Diploma (PGDip) level and can progress through these levels to achieve a full master's on successful completion of each stage.

- To achieve a PGCert you must successfully complete modules worth 60 credits
- To achieve a PGDip you must successfully complete modules worth 120 credits
- To achieve a full master's qualification you must successfully complete 180 credits, including a dissertation project.

If you apply for a full master's programme you can exit with either a PGCert or PGDip award on successful completion of the required number of credits.

Some of our master's programmes are taught through alternative modes of delivery ie:

Flexible learning – our flexible programmes are delivered wholly online and allow you choose when and where to study, following a clear programme structure that keeps you motivated. Please note that in some cases the content of our online and on-campus programmes differ. Please check our website for full details of programme content.

Blended learning – our blended learning approaches combine traditional classroom teaching, online learning and structured independent study time guided by the material in the lectures and skills developed during the classroom experience.





All our postgraduate taught programmes are listed in the tables on each department page in this prospectus alongside modes of delivery, the campus they're taught at and the related fees.

Postgraduate research opportunities

Research opportunities, including related fees, are detailed on pages 98-101.

Fees and finance

Fees cover the cost of your tuition, registration, examinations (but not resits) and graduation. The level of fees you pay and eligibility for studentships or funding depends upon whether you are classified as a UK, EU or international student. Details of PGT fees for entry 2017 are listed on each department page.

At the time of going to print the postgraduate research fees, including MRes programmes, for entry 2017 hadn't been set. As an indicative guide, 2016 PGR fees have been included, but these are set to rise for 2017.

For the very latest information on fees, including payment of fees and transferring funds from abroad, visit www.liverpool.ac.uk/study/postgraduate/finance

Funding and scholarships

The University of Liverpool offers a range of scholarships and awards for UK, EU and international students. For the very latest information, visit www.liverpool.ac.uk/study/postgraduate/finance

New Master's Loan

The Government has introduced a new Postgraduate Loan of up to £10,000 as a contribution towards your course and living costs while you're studying. The amount you can borrow **doesn't depend** on your household income.

If your course or programme is two years long or part-time you can get up to £5,000 in your first year and the rest in your second year.

The loan will be paid into your bank account in three instalments each academic year. You have to repay any Postgraduate Loan you borrow.

Who's eligible?

Students who will be studying a taught or research master's course or programme, who are under 60 years of age and normally live in England are eligible to apply.

For the most up to date information and details of how to apply visit www.thestudentroom.co.uk/studentfinance



Archaeology, Classics and Egyptology

We offer you the opportunity to engage in research-led teaching across a wide range of ancient civilisations and languages in an academically inspiring environment.

Bring theory to life

At Liverpool our teaching is not just paper-based; we have on-campus facilities that allow you to experience hands-on activities to complement your studies. You'll be taught in our newly refurbished Garstang Museum of Archaeology, which holds an outstanding 40,000 artefacts, including collections from Egypt, Al Mina and the Temple of Artemis Orthia at Sparta. You'll also be able to use archaeological facilities in the award-winning Central Teaching Laboratories, including equipment and replica material for scientific analysis and a Flint-Knapping laboratory.

Breadth of choice

We offer a unique breadth of taught master's degrees in Ancient History, Archaeology, Classics, Egyptology and Palaeoanthropology that offer you the chance to tailor a choice of modules to suit your interests.

Surround yourself with academic excellence

You'll be studying in one of the largest departments of its kind in the world, with a community of 40 full-time academic staff all engaged in internationally recognised research.

In the Research Excellence Framework (REF) 2014 our Department of Archaeology was ranked 5th in the UK. Our staff specialisms include Greek and Roman Literature, Ancient History, Mediterranean Archaeology, British Prehistoric and Historic Archaeology, Human Evolution (Evolutionary Anthropology), African Archaeology, Near Eastern Archaeology and Egyptology (the largest grouping of Egyptologists in the UK).

TAUGHT PROGRAMMES

Ancient History MA

This MA provides intensive preparation for further research in Ancient History, as well as transferable skills and training that employers will value. In addition to the core modules you'll study, you can choose from a unique range of specialist Greek and Roman history modules; all of which are taught in very small groups or one-to-one. This approach allows you to tailor a programme to suit your research interests and agenda.

| Taught programmes | Mode of delivery | Campus | UK and EU fees | International fees |
|-----------------------------------|------------------------|-----------|------------------|--------------------|
| Ancient History MA | Full-time Part-time | Liverpool | £5,600 £2,800 | £12,750 |
| Archaeology MSc | Full-Time Part-time | Liverpool | £5,600 £2,800 | £12,750 |
| Archaeology MA | Full-time Part-time | Liverpool | £5,600 £2,800 | £12,750 |
| Archaeology MRes | Full-time Part-time | Liverpool | £4,121 £2,060 | £14,100 |
| Classics MA | Full-time Part-time | Liverpool | £5,600 £2,800 | £12,750 |
| Classics and Ancient History MRes | Full-time Part-time | Liverpool | £4,121 £2,060 | £14,100 |
| Egyptology MA | Full-time Part-time | Liverpool | £5,600 £2,800 | £12,750 |
| Egyptology MRes | Full-time Part-time | Liverpool | £4,121 £2,060 | £14,100 |
| Palaeoanthropology MSc | Full-time | Liverpool | £5,600 | £12,750 |
| Palaeoanthropology MRes | Full-time Part-time | Liverpool | £4,121 £2,060 | £14,100 |

Please note that the fees shown for the MRes programmes are for entry 2016 and will rise for entry 2017.

For the very latest information on fees and scholarships, including Government loans and initiatives, visit www.liverpool.ac.uk/study/postgraduate/finance

Two of the second-semester options may be studied at the prestigious British School at Athens or the British School at Rome.

There are additional opportunities to study Greek and Latin at every level from beginners to advanced.

Archaeology MSc

This MSc programme concentrates on science-based archaeology and is ideal for you if you want to become post-excavation or artefact specialists in the museum or commercial sectors. There are two pathways to choose from: **Artefact** and **Landscape and Environment**. Both are suitable for graduates in archaeology or science subjects who want to start or further their careers in these exciting fields.

Archaeology MA/MRes

The MA in Archaeology is ideal if you want to study the major developments in human societies from the origins of settled life to the florescence of the great civilisations.

We'll teach you a variety of practical archaeological techniques and cover in depth the prehistory of the Mediterranean region, the Near East and Northern Europe or the archaeology of the classical world.

Our MRes programme involves more independent study than the MA and MSc and is often a route to a PhD. It provides a personalised and focused introduction to research allowing you to develop as an independent researcher with the support of an expert in that area.

Classics MA

The Classics MA provides intensive preparation for further research into the literature and culture of ancient Greece and Rome, whilst also providing more generic skills and training useful in any job. Following the core modules, you select courses in Classical literature and culture on topics reflecting the research specialisms of our staff. You have the option to complement this study by picking up or extending your skills in ancient Greek or Latin.

You may also select optional modules in the history, politics and society of ancient Greece and Rome. In this way you can direct your studies according to your individual interests and ambitions.

Classics and Ancient History MRes

Our MRes programme involves more independent study than the MA and is often a route to a PhD. It provides a personalised and focused introduction to research allowing you to develop as an independent researcher with the support of an expert in that area.

Egyptology MA/MRes

If you are a graduate in Egyptology or a related discipline, this MA will enable you to deepen your knowledge of Egyptian language and/or material culture.

The programme provides intensive preparation for research and offers you training in fields such as analytical and generic problem solving; skills that any employer will value. You can take advantage of the range of classes and available modules offered in the department dispensing breadth and depth of knowledge in the areas of study relevant to your research interest.

Our MRes programme involves more independent study than the MA and is often a route to a PhD. It provides a personalised and focused introduction to research allowing you to develop as an independent researcher with the support of an expert in that area.

Palaeoanthropology MSc/MRes

The MSc in Palaeoanthropology provides an up-to-date foundation in the study of human evolution for people interested in human origins. The programme is especially suitable for you if you have a first degree in Archaeology, Anthropology, Earth or Life Sciences. You'll be able to tailor your studies to reflect your interests by choosing from a diverse array of subjects such as the archaeology of early hominid sites, African archaeology, hominid palaeontology, evolutionary theory, primate evolution and science-based techniques in palaeoanthropological investigation.

Our MRes programme involves more independent study than the MSc and is often a route to a PhD. It provides a personalised and focused introduction to research allowing you to develop as an independent researcher with the support of an expert in that area.

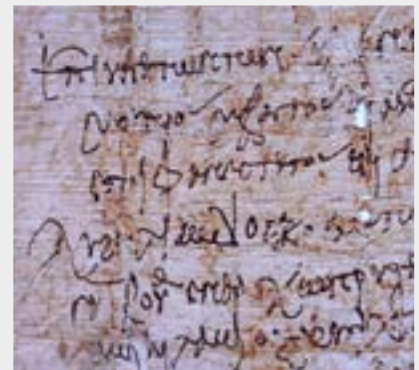
RESEARCH OPPORTUNITIES

Postgraduate research opportunities are listed on page 100. Full details can be found at www.liverpool.ac.uk/study/postgraduate/courses/research

Contacting Archaeology, Classics and Egyptology

E: hicevent@liverpool.ac.uk

www.liverpool.ac.uk/archaeology-classics-and-egyptology/



Architecture

RIBA  

Build your Architecture career on firm foundations by choosing to study at the world's oldest RIBA accredited department. We are driven by the pursuit of design excellence for the 21st century, inspired by the creativity of the city we call home and founded on providing the solid practical skills you will need in practice.

| Taught programmes | Mode of delivery | Campus | UK and EU fees | International fees |
|---|------------------------|-----------|------------------|--------------------|
| Master of Architecture MArch | Full-time | Liverpool | See online. | |
| Advanced Transdisciplinary Design MSc | Full-time Part-time | London | 10,000 5,000 | 18,400 |
| Architecture MA | Full-time | Liverpool | £5,600 | £12,750 |
| Architecture MSc* | Full-time | London | £9,800 | £17,800 |
| Arts MRes | Full-time Part-time | Liverpool | £4,121 £2,060 | £14,100 |
| Building Information Modelling MSc | Full-time Part-time | Liverpool | £5,600 £2,800 | £12,750 |
| Digital Integrated Design MSc | Full-time | Liverpool | £5,600 | £12,750 |
| Sustainable Environmental Design in Architecture (SEDA) MSc | Full-time | Liverpool | £5,600 | £12,750 |

Please note that the fees shown for the MRes programmes are for entry 2016 and will rise for entry 2017.

*This programme is currently under review.

Be inspired in a dynamic city setting

Our location in the heart of the world heritage port city of Liverpool means we respond to its outward-looking international focus. With impressive architectural heritage and award winning contemporary architecture – including the 2014 Stirling prize winning Everyman Theatre – Liverpool provides an excellent backdrop to our focus in both research and teaching on the design of cities and the urban situation.

Located at the heart of two world cities

We now run a number of postgraduate taught programmes at our London Campus. From the base in Finsbury Square, close to the cultural centre of the Barbican and the financial centre of the city of London, our programmes build links with leading architectural practices in the capital.

For the very latest information on fees and scholarships, including Government loans and initiatives, visit www.liverpool.ac.uk/study/postgraduate/finance

At the vanguard of architecture education

We are the oldest university School of Architecture; the first in the world to have Royal Institute of British Architects (RIBA) accredited programmes, gaining accreditation in 1906. We were therefore responsible for setting the standard for architectural education and have maintained it ever since. Our alumni include Sir James Stirling, after whom the RIBA Stirling Prize was named.

In the UK's top ten for Research Excellence

As part of the original 'redbrick' university, we are founded on the integration of original research and high-quality teaching and we are ranked in the top 10 in the UK for research excellence (Research Excellence Framework, 2014).



With Liverpool being the home of the original red-brick building, studying in this city has been both inspiring and invaluable. We are given access to fantastic facilities such as laser cutters and 3D printers so I am able to expand my knowledge and use various methods to make models.

Tao Bian
Architecture MA

TAUGHT PROGRAMMES – PROFESSIONALLY VALIDATED

Master of Architecture MArch

The Master of Architecture (MArch) programme is a professional/undergraduate master's qualification available to students with an appropriate first degree in Architecture and RIBA Part I. It leads to the RIBA Part II award.

This degree is validated by the RIBA and prescribed by ARB as a Part 2 qualification towards access to the Architectural Profession in Europe.

TAUGHT PROGRAMMES – NON-PROFESSIONALLY VALIDATED

Advanced Transdisciplinary Design MSc

This programme, run at our London Campus, equips you with digitally driven design skills that organisations across the globe are now seeking from their designers, engineers, architects and managers.

This unique programme pioneers a collaborative transdisciplinary approach between Architecture and Industrial Design disciplines sharing a design ethos and methodology; exploring the similarities and differences in a collaborative studio environment.

The programme is a collaboration between the schools of Architecture and Engineering that brings together the best of design teaching from different professions; from Industrial and Product Design, Architecture, alongside facilities at the technological forefront of digital design including Virtual Engineering, Virtual Reality and Rapid Prototyping.

Architecture MA

We've designed this programme for graduates wishing to specialise in architecture and for architects in practice wishing to develop their skills. You'll study a range of academic, research-based topics in specific areas that reflect your experience and interests.

You can personalise your studies with a number of specialisms including history and theory of architecture, architecture and the visual arts, digital techniques in architecture and design, and sustainable design.

Architecture MSc

The MSc Architecture is aimed at graduates from a number of disciplines who are interested in pursuing a non-professional degree in architecture or an area closely related to architecture. With a number of core modules that introduce you to detailed aspects of architecture led-research, you can take either a studio design based route drawing on both the rich heritage of the city of London and on the wider UK context, or a purely research based route if you prefer.

Arts MRes

The Arts MRes allows you to undertake a research project in one or more of the School of the Arts' key subject areas: Architecture, Communications and Media, English, Music and Philosophy. You will receive training in research skills and supervision from one or more academic specialists in their subject area(s).

The programme provides excellent preparation for you if you're intending to undertake a PhD in the Arts and Humanities, but is also a good choice if you wish to pursue a research project for purposes of professional development or personal interest.

Building Information Modelling MSc

Building Information Modelling (BIM) is a comprehensive, integrated and efficient approach to design and construction that builds on both architectural knowledge and technological progress.

By the modelling, analysis and use of intelligent models, BIM drives the production of more accurate and effective building plans. This programme has been developed for students or practitioners from architecture, engineering or construction professions seeking to develop skills in the theory and practice of BIM in design and construction.

Digital Integrated Design MSc

This exciting programme integrates the principles of digital integrated design and integrated collaborative design. You'll investigate the integration of digital media in architectural and urban design at all three levels; creative (eg parametric, generative), operational and collaborative (eg BIM). Through collaborative design exercises, you will gain practical experience of working with diverse digital media and techniques to generate, evaluate and communicate design intelligence and information.

Sustainable Environmental Design in Architecture (SEDA) MSc

The MSc in Sustainable Environmental Design in Architecture is available with specialist modules that include designing for climate change, sustainable architecture, low carbon technologies and computer modelling of sustainable environments.

Taught by our expert researchers, the programme is for graduates and professionals wanting to learn about the increasingly important area of sustainable design.

For full details of all the modules on offer consult the Architecture Postgraduate Brochure 2017, available on request, or visit www.liverpool.ac.uk/study/postgraduate/courses/taught

RESEARCH OPPORTUNITIES

Postgraduate research opportunities are listed on page 100. Full details can be found at www.liverpool.ac.uk/study/postgraduate/courses/research/

Contacting Architecture

Liverpool Campus taught enquiries

T: +44 (0)151 795 0500

E: sscarts@liverpool.ac.uk

Research enquiries

E: pgarts@liverpool.ac.uk

www.liverpool.ac.uk/architecture

London Campus enquiries

T: +44 (0)151 794 5927

E: archlond@liverpool.ac.uk

www.liverpool.ac.uk/london



Chemistry

The University of Liverpool is one of the most exciting places in the UK to study or research Chemistry. Academic and industrial researchers work side-by-side, sharing knowledge in highly advanced research labs, such as our Centre for Materials Discovery and our new £65 million Materials Innovation Factory.



| Taught programmes | Mode of delivery | Campus | UK and EU fees | International fees |
|--------------------------------|------------------------|-----------|------------------|--------------------|
| Advanced Chemical Sciences MSc | Full-time Part-time | Liverpool | £6,500 £3,250 | £18,300 |

For the very latest information on fees and scholarships, including Government loans and initiatives, visit www.liverpool.ac.uk/study/postgraduate/finance

Ranked 1st in the UK

We are ranked 1st in the UK for 4* and 3* research in the Research Excellence Framework 2014.

Outstanding facilities

Our award winning £23 million Central Teaching Laboratories offer a unique environment for the study of Physical Sciences. The Chemistry labs, which includes the Synthetic Chemistry and Physical Chemistry labs, are fully stocked with new equipment for a wide range of experiments.

The University, Unilever and the Higher Education Funding Council for England (HEFCE) have also co-invested £65 million to establish the Materials Innovation Factory – a new type of ‘knowledge factory’ based on a strong partnership between industry and academia.

The new facility, provides unparalleled open access to a suite of advanced equipment, technical staff and academic expertise at the forefront of materials chemistry research.

TAUGHT PROGRAMMES Advanced Chemical Sciences MSc

This MSc provides graduates, who have already studied chemistry to undergraduate level or equivalent, with the necessary additional skills and depth of knowledge to become professional chemists. Module topics range from core physical, inorganic and organic chemistry to specialist cutting-edge research areas. Choices can be made to suit your individual skills and interests.

RESEARCH OPPORTUNITIES

Postgraduate research opportunities are listed on page 101. Full details can be found at www.liverpool.ac.uk/study/postgraduate/courses/research

Contacting Chemistry

Dr Gita Sedghi
T: +44 (0)151 794 3372
E: rezaei@liverpool.ac.uk
www.liverpool.ac.uk/chemistry

Communication and Media

Communication and Media is a successful, growing and highly focused department whose staff are committed to providing the very best teaching, learning and research environment for you, enabling you to be successful in your academic career with us and beyond.

| Taught programmes | Mode of delivery | Campus | UK and EU fees | International fees |
|--|------------------------|-----------|-------------------|--------------------|
| Arts MRes | Full-time Part-time | Liverpool | £4,121 £2,060 | £14,100 |
| Media and Communication MA (Digital Culture and Communication pathway) | Full-time Part-time | Liverpool | £5,700 £2,850 | £13,000 |
| Media and Communication MA (Media and Politics pathway) | Full-time Part-time | Liverpool | £5,700 £2,850 | £13,000 |
| Strategic Communication MSc | Full-time Part-time | London | £12,400 £6,200 | £18,550 |

Please note that the fees shown for the MRes programmes are for entry 2016 and will rise for entry 2017.

For the very latest information on fees and scholarships, including Government loans and initiatives, visit www.liverpool.ac.uk/study/postgraduate/finance

We have, over many years, developed considerable expertise in many aspects of media research and teaching, including particular specialisms in political communication and screen media.

Immerse yourself in a city known as a political and creative force

The Department has close links to cultural industries and venues in the city, which has a reputation as a political and creative force, with a thriving production sector and a unique cultural heritage. So, what better place to immerse yourself in the subject than Liverpool?

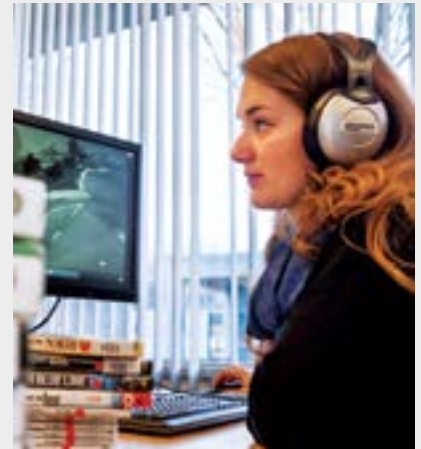
Active research

Key areas of our research strength include: political communication; media theory; political and independent cinema; gender and media; media and human rights; media and war; new media and digital communication; media discourse; global entertainment and media industries; media, space and place; media and heritage; media and cultural identity; financial and business communication and argumentation theory.

This broad range of research expertise underpins the programmes we offer. We also run two regular research seminar series – the Liverpool Film Seminar and the Media and Politics Seminar Series – which postgraduate students are encouraged to participate in.

Close-knit postgraduate community

We provide both taught and research programmes and you can benefit from a personalised approach which treats you as an individual and encourages you to become involved in the life of the department.



TAUGHT PROGRAMMES

Arts MRes

The Arts MRes allows you to undertake a research project in one or more of the School of the Arts' key subject areas: Architecture, Communications and Media, English, Music and Philosophy. You will receive training in research skills and supervision from one or more academic specialists in their subject area(s).

The programme provides excellent preparation for you if you're intending to undertake a PhD in the Arts and Humanities, but is also a good choice if you wish to pursue a research project for purposes of professional development or personal interest.

Media and Communication MA

This programme provides an excellent preparation for work in media and communication, politics, cultural industries, research and related fields. The programme has two specialised pathways: **Digital Culture and Communication** and **Media and Politics**, allowing you to pursue your particular research interest.

The **Digital Culture and Communication** pathway offers an excellent opportunity for you to engage with contemporary issues and debates on culture, media and society in the digital age. The pathway critically examines the relationship between media, technology and everyday life and it encourages students to analytically reflect on their own digital cultures, identities and everyday practices.

The **Media and Politics** pathway is a fantastic opportunity for you to engage with current debates about the constantly evolving role of media in national and international political life. The pathway uncovers the ways in which journalists and politicians attempt to set the political agenda or influence public opinion and also explores the ways in which the audiences, as public and as citizens, are involved in media as consumers and producers.

Strategic Communication MSc

This programme, delivered at our London Campus, combines a range of disciplines and perspectives to develop the conceptual and practical skills that are crucial for successful strategic communication. It serves as an excellent preparation for careers in the communication and information industries in the UK and abroad.

RESEARCH OPPORTUNITIES

Postgraduate research opportunities are listed on page 100. Full details can be found at www.liverpool.ac.uk/study/postgraduate/courses/research

Contacting Communication and Media

Taught programmes

T: +44 (0)151 795 0500

E: sscards@liverpool.ac.uk

Research programmes

E: pgarts@liverpool.ac.uk

www.liverpool.ac.uk/communication-and-media

Computer Science

In the recent Research Excellence Framework 2014, we were ranked top in the UK for research excellence at 4* and 3*. Research is supported by a mixture of European, National, and industrial funding, providing a balanced portfolio of activity that feeds back into teaching. This helps ensure our programmes go beyond the practical application of the subject to inspire our students about the possibilities of Computer Science.

Taught programmes

Mode of delivery

Campus

UK and EU fees

International fees

Advanced Computer Science
MSc/PGDip/PGCert
with a Year in Industry (Year 1)
with a Year in Industry (Year 2)

Full-time
Full-time
Full-time

Liverpool
Liverpool
Liverpool

£6,000
£4,000
£2,000

£16,850
£11,250
£5,600

Advanced Computer Science with
Internet Economics MSc/PGDip/
PGCert
with a Year in Industry (Year 1)
with a Year in Industry (Year 2)

Full-time
Full-time
Full-time

Liverpool
Liverpool
Liverpool

£6,000
£4,000
£2,000

£16,850
£11,250
£5,600

Big Data and High Performance
Computing MSc/PGDip/PGCert
with a Year in Industry (Year 1)
with a Year in Industry (Year 2)

Full-time
Full-time
Full-time

Liverpool
Liverpool
Liverpool

£6,000
£4,000
£2,000

£16,850
£11,250
£5,600

Computer and Information
Security MSc/PGCert

Flexible

Online

Visit www.liverpool.ac.uk/study/online/

Computer Science MSc/PGDip/
PGCert

Full-time

Liverpool

£6,000 £16,850

Information Systems
Management MSc/PGCert

Flexible

Online

Visit www.liverpool.ac.uk/study/online/

Information Systems Project
Management MSc/PGCert

Flexible

Online

Visit www.liverpool.ac.uk/study/online/

Information Technology
MSc/PGCert

Flexible

Online

Visit www.liverpool.ac.uk/study/online/

Software Engineering MSc/PGCert

Flexible

Online

Visit www.liverpool.ac.uk/study/online/

Web Sciences and Big Data
MSc/PGCert

Flexible

Online

Visit www.liverpool.ac.uk/study/online/

Exceptional facilities and equipment

Following a recent refurbishment, our labs provide extensive state-of-the-art facilities including well equipped electrical and computing laboratories and specialist sections for research activities, as well as technical staff on hand to help and offer expert advice and support. The postgraduate labs incorporate the latest research facilities and instrumentation.

Postgraduate taught programmes

The taught components of our on campus MScs cover a range of contemporary computing topics and provide you with a strong theoretical basis, as well as develop critical analysis and practical skills.

We are also market leaders in the design, development and delivery of online Computer Science MScs. Our pioneering activities in this area offer flexible learning opportunities and group support via virtual classrooms.

Postgraduate opportunities with a year in industry

To meet the increasing demand for MSc students to have industry experience, we have introduced three new two-year MSc programmes. The two-year MScs offer you the opportunity to develop advanced knowledge and skills in Computer Science, which you can put into practice through valuable work experience during a one-year industrial placement.

For the very latest information on fees and scholarships, including Government loans and initiatives, visit www.liverpool.ac.uk/study/postgraduate/finance



TAUGHT PROGRAMMES

Advanced Computer Science MSc/PGDip/PGCert*

The MSc in Advanced Computer Science is intended for you if you already have a first degree in Computer Science or a closely related subject, and wish to extend the knowledge gained in your undergraduate study with more advanced specialised material reflecting current cutting-edge research.

The programme is accredited by the British Computer Society:

- CITP (Chartered IT Professional) with Further Learning Elements
- Partial CSci accreditation
- Partial CEng accreditation.



Hartree Centre

Science & Technology Facilities Council

Advanced Computer Science with Internet Economics MSc/PGDip/PGCert*

This unique programme, the first of its kind in Europe, offers a range of modern topics that range from optimisation and computational game theory to network games, and modern applications in electronic commerce, such as Google sponsored search auctions. It is offered by the Computer Science Department, with contributions from the University of Liverpool Management School.

Big Data and High Performance Computing MSc/PGDip/PGCert*

The MSc in Big Data and High Performance Computing is designed to address the impending skills gap in the field of big data and provide you with the necessary abilities, highly desirable within the employment market, to address big data centric problems in the context of High Performance Computing (HPC).

The programme has been designed, and operates in close collaboration, with the STFC Hartree Centre for intense computing. Hartree houses the UK's most advanced supercomputing infrastructure dedicated to industrial engagement – and focuses on practical application of Big Data and HPC technology to real-life industry and academic projects.

* This programme can also be studied full-time over two years, with the latter year spent undertaking an industrial placement either in the UK or overseas.

Computer Science MSc/PGDip/PGCert

This MSc in Computer Science is suitable for you if you don't have a first degree in Computer Science and wish to supplement the knowledge acquired in your undergraduate study with a substantial element of computer science.

For full details of all the modules on offer consult the School of Electrical Engineering, Electronics and Computer Science Postgraduate Brochure 2017, available on request, or visit www.liverpool.ac.uk/study/postgraduate/courses/taught

Online programmes

Full details of our online programmes can be found at www.liverpool.ac.uk/study/online/programmes

RESEARCH OPPORTUNITIES

Postgraduate research opportunities are listed on page 101. Full details can be found at www.liverpool.ac.uk/study/postgraduate/courses/research

Contacting Computer Science

Postgraduate taught programmes

Dr Martin Gairing

T: +44 (0)151 795 4264

E: gairing@liverpool.ac.uk

www.liverpool.ac.uk/computer-science

Dentistry

As one of the UK’s leading dental schools, we specialise in helping people build successful dental careers. Join us and you’ll be learning from highly experienced, practising professionals, in state of the art learning facilities.

| Taught programmes | Mode of delivery | Campus | UK and EU fees | International fees |
|-----------------------------|------------------|-----------|----------------|--------------------|
| Endodontics DDSc | Full-time | Liverpool | TBC | TBC |
| Orthodontics DDSc | Full-time | Liverpool | TBC | TBC |
| Special Care Dentistry DDSc | Full-time | Liverpool | TBC | TBC |

For the very latest information on fees and scholarships, including Government loans and initiatives, visit www.liverpool.ac.uk/study/postgraduate/finance

Diverse range of programmes for all members of the dental team
Programmes in the School of Dentistry extend from short courses, aimed at updating the general dental practitioner, to full-time studentships leading to higher degrees, with a large variety of research based or professional training programmes in between. We have an expanding range of verifiable CPD courses for all members of the dental team. For more information visit www.liverpool.ac.uk/dentistry/cpd

Professional Doctorates
We offer three Professional Doctorates, which are taught and research qualifications that contain Professional Skills Training. The programmes fulfil the need for dental practitioners to have access to a higher dental degree which provides specialist clinical training in Endodontics, Orthodontics and Special Care Dentistry.

TAUGHT PROGRAMMES
Endodontics DDSc
On successful completion of this three-year clinical programme you will be awarded the DDSc (Endodontics) from the University of Liverpool and a MEndo from the Royal College of Surgeons (RCS) of Edinburgh. Both Endodontics Specialist Curriculum and the Royal College of Surgeons of Edinburgh blueprints in Endodontics are embedded into the programme.

The programme trains future Endodontists to be equipped with the required knowledge and skills to provide the highest level of care. The research modules are designed to encourage cutting-edge research and innovation in Endodontology while maintaining a focus on clinical applications. Our DDSc Endodontics graduates have progressed in to a range of career pathways, including Endodontic practice, teaching and academia.

Orthodontics DDSc
This three-year Doctorate prepares you for the Royal College of Surgeons examinations for the award of Membership in Orthodontics or further orthodontic qualifications. In order to apply you should already have passed the FDS/MFDS examination or an equivalent. Funded specialist trainee appointments are competitively available to appropriately qualified candidates on this programme with application through the national recruitment process.

Special Care Dentistry DDSc
This DDSc pathway prepares UK students for the Tri-Collegiate Diploma of Membership in Special Care Dentistry examinations to become a specialist. International students undertaking this pathway would be eligible to apply for the International Membership in Special Care Dentistry.

RESEARCH OPPORTUNITIES
Postgraduate research opportunities offered by the Faculty of Health and Life Sciences are listed on page 101. Full details can be found at www.liverpool.ac.uk/study/postgraduate/courses/research

Contacting the School of Dentistry
University of Liverpool School of Dentistry
Pembroke Place, Liverpool L3 5PS
T: +44 (0)151 706 5231
F: +44 (0)151 706 5652
E: dentenq@liverpool.ac.uk
www.liverpool.ac.uk/dentistry



Earth Sciences

Earth Sciences at Liverpool comprises the disciplines of Geology and Geophysics. The Department is enriched with cutting-edge research by experts acknowledged in their fields and is focused on the needs of students as they prepare for their careers.



| Taught programmes | Mode of delivery | Campus | UK and EU fees | International fees |
|------------------------------------|------------------|-----------|----------------|--------------------|
| Petroleum Reservoir Geoscience MSc | Full-time | Liverpool | £9,800 | £23,050 |

For the very latest information on fees and scholarships, including Government loans and initiatives, visit www.liverpool.ac.uk/study/postgraduate/finance

Unique MSc programme

The new MSc in Petroleum Reservoir Geoscience is unique in the UK and links in closely with oil and gas industry professionals to develop graduates with specific knowledge and focus on the reservoir side of Petroleum Geoscience. The MSc develops Geology, Geophysics and general Geoscience knowledge and skills, giving you the opportunity to gain expertise and experience highly sought after by employers and preparing you for your future career.

This MSc reflects the slow change of emphasis from exploration to production geoscience in mature basins such as the North Sea and Europe's Atlantic Margin.

This MSc will explore the basinal context of petroleum reservoirs and introduce you to petroleum economics and risk & uncertainty analysis. You will gain in depth knowledge of how to define the shape, structure, stratigraphy and volume of reservoirs using remote sensing and geological models, as well as how to define rock properties with advanced seismic techniques. You will work with petrophysical data acquired from wells, to develop your understanding of structure and stratigraphy of the reservoir and incorporate data from drill-core.

TAUGHT PROGRAMMES

Petroleum Reservoir Geoscience MSc

Petroleum geology (oil and gas geology) is a large sector which employs 1000s of graduates every year. Globally there is an increasing demand for skilled petroleum geoscientists who can provide the quantitative, reservoir-focused geoscience skills needed by the hydrocarbon industry to maximise the rate of production and optimise recovery (total oil/gas) from a field.

In addition, you will develop your knowledge of reservoir sedimentology, fluid geochemistry and dynamic data analysis and simulation to refine the geological model. Outcrop studies and field work will include visits to rural and coastal locations at sites where many of the reservoirs in the North Sea and other UK basins outcrop at the surface.

For full details of all the modules on offer consult the School of Environmental Sciences Postgraduate Brochure 2017, available on request, or visit www.liverpool.ac.uk/study/postgraduate/courses/taught

RESEARCH OPPORTUNITIES

Postgraduate research opportunities are listed on page 101. Full details can be found at www.liverpool.ac.uk/study/postgraduate/courses/research

Contacting Earth Sciences

T: +44 (0)151 794 3125

E: soesresearch@liverpool.ac.uk

www.liverpool.ac.uk/earth-ocean-and-ecological-sciences/

Ecology and Marine Biology

Liverpool has long led the way in the study of Ecology and Marine Biology. Not only were we the first UK university to offer a degree in Marine Biology, we are also an established leader in Ecology. We are part of the School of Environmental Sciences so your studies will benefit from our shared links with Ocean Sciences, Geography and the School of Life Sciences.

TAUGHT PROGRAMMES Conservation and Resource Management MSc/MRes

There has never been a more exciting time to study conservation biology and resource management. Our one-year programmes train you to an advanced level in conservation science and resource management, enabling you to become conservation professionals in research or the government, non-governmental organisation, and consultancy sectors.

Modules include fieldwork, Advanced Statistics for Biological Research, Tackling Environmental issues, Project Design and Management, Politics of The Environment and Geographical Information Systems.

Our MRes programme involves more independent study than the MSc and is often a route to a PhD. It provides a personalised and focused introduction to research allowing you to develop as an independent researcher with the support of an expert in that area.

For full details of all the modules on offer consult the School of Environmental Sciences Postgraduate Brochure 2017, available on request, or visit www.liverpool.ac.uk/study/postgraduate/courses/taught

RESEARCH OPPORTUNITIES

Postgraduate research opportunities are listed on page 101. Full details can be found at www.liverpool.ac.uk/study/postgraduate/courses/research

Contacting Ecology and Marine Biology

T: +44 (0)151 794 3125

E: soesresearch@liverpool.ac.uk
www.liverpool.ac.uk/ecology

| Taught programmes | Mode of delivery | Campus | UK and EU fees | International fees |
|---|------------------|-----------|--|---|
| Conservation and Resource Management MSc | Full-time | Liverpool | £6,700 (including Research Support Fees) | £17,500 (including Research Support Fees) |
| Conservation and Resource Management MRes | Full-time | Liverpool | £6,700 (including Research Support Fees) | £17,500 (including Research Support Fees) |

Please note that the fees shown for the MRes programmes are for entry 2016 and will rise for entry 2017.

For the very latest information on fees and scholarships, including Government loans and initiatives, visit www.liverpool.ac.uk/study/postgraduate/finance

Be part of a department whose world-leading research is helping to tackle today's greatest environmental challenges

Our research into the vulnerability of marine species and habitats to fishing and coastal development is helping the Department for Environment, Food and Rural Affairs and the International Council for the Exploration of the Sea to develop sustainable management plans.

Benefit from our excellent facilities and partnerships

Our outstanding facilities include the Biology Teaching Centre, our custom-built research vessel, Marisa, and the award-winning Central Teaching Laboratories (CTL). Liverpool is also one of two hosting partners for the National Oceanography Centre (NOC).

Electrical Engineering and Electronics

Electrical Engineering and Electronics at Liverpool is at the forefront of research in this fast-moving discipline and our postgraduate body is one of the largest in the University, encompassing world-class fundamental and applied research. We offer an exciting, theoretical and practical range of degree programmes which address all of the major subject areas underpinning the new IT based modern economy.

| Taught programmes | Mode of delivery | Campus | UK and EU fees | International fees |
|---|--------------------|-----------|----------------|--------------------|
| Energy and Power Systems MSc (Eng) | Full-time | Liverpool | £6,000 | £16,850 |
| Energy and Power Systems with a Year in Industry MSc (Eng) | Full-time (Year 1) | Liverpool | £4,000 | £11,250 |
| | Full-time (Year 2) | Liverpool | £2,000 | £5,600 |
| Microelectronic Systems MSc (Eng) | Full-time | Liverpool | £6,000 | £16,850 |
| | Part-time | | £3,000 | |
| Microelectronic Systems with a Year in Industry MSc (Eng) | Full-time (Year 1) | Liverpool | £4,000 | £11,250 |
| | Full-time (Year 2) | Liverpool | £2,000 | £5,600 |
| Telecommunications and Wireless Systems MSc (Eng) | Full-time | Liverpool | £6,000 | £16,850 |
| | Part-time | | £3,000 | |
| Telecommunications and Wireless Systems with a Year in Industry MSc (Eng) | Full-time (Year 1) | Liverpool | £4,000 | £11,250 |
| | Full-time (Year 2) | Liverpool | £2,000 | £5,600 |

World-class facilities, including top industry standard laboratories

We have specialist facilities for processing semiconductor devices, optical imaging spectroscopy and sensing, technological plasmas, equipment for testing switch gear, specialist robot laboratories, clean room laboratories, e-automation, RF Engineering, bio-nano engineering labs and excellent mechanical and electrical workshops.

A leading centre for electrical and electronic engineering expertise

We are closely involved with over 50 prominent companies and research organisations worldwide, many of which not only fund and collaborate with us but also make a vital contribution to developing our students.

For the very latest information on fees and scholarships, including Government loans and initiatives, visit www.liverpool.ac.uk/study/postgraduate/finance

Postgraduate opportunities with a year in industry

To meet the increasing demand for MSc students to have industry experience, we have introduced three new two-year MSc programmes.

The two-year MScs offer you the opportunity to develop advanced knowledge and skills in Electrical Engineering and Electronic subjects, which you can put into practice through valuable work experience during a one-year industrial placement.

TAUGHT PROGRAMMES Energy and Power Systems MSc (Eng)

This programme will provide you with an in-depth knowledge of the electrical power generation, transmission, distribution and networks. The operating principles, monitoring, optimisation and control of modern power systems are discussed in detail. The programme has been carefully developed for graduates with electrical/electronic or related background to meet the increasing demand from the energy and power industry.

This programme can also be studied full-time over two years, with the latter year spent undertaking an industrial placement either in the UK or overseas.

Microelectronic Systems MSc (Eng)

On this well-established MSc programme you will develop advanced knowledge and skills in key aspects of telecommunications and wireless systems. The content is updated annually to maintain industry relevance and to reflect the latest developments.

This programme can also be studied full-time over two years, with the latter year spent undertaking an industrial placement either in the UK or overseas.

Telecommunications and Wireless Systems MSc (Eng)

This MSc programme will develop your knowledge and skills to an advanced level in key aspects of telecommunications and wireless systems.

This programme can also be studied full-time over two years, with the latter year spent undertaking an industrial placement either in the UK or overseas.

For full details of all the modules on offer consult the Electrical Engineering, Electronics and Computer Science Postgraduate Brochure 2017, available on request, or visit www.liverpool.ac.uk/study/postgraduate/courses/taught

RESEARCH OPPORTUNITIES

Postgraduate research opportunities are listed on page 101. Full details can be found at www.liverpool.ac.uk/study/postgraduate/courses/research

Contacting Electrical Engineering and Electronics Postgraduate taught programmes

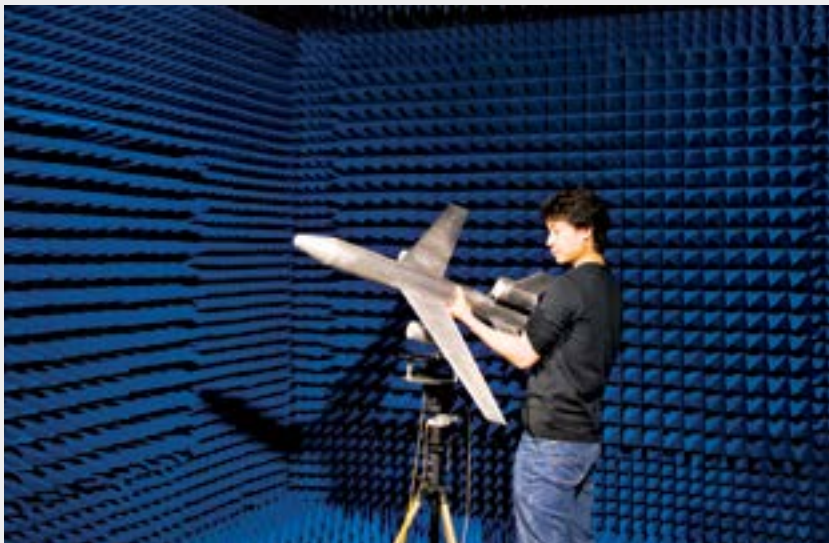
Professor Yi Huang

T: +44 (0)151 794 4553

F: +44 (0)151 794 4540

E: msceee@liverpool.ac.uk

www.liverpool.ac.uk/eee



Engineering ice



Whether you are looking to enhance your engineering CV in a key area, complete the accredited study requirement for membership of your professional institution or kick start your research career in engineering science, Liverpool is the place to do it.

TAUGHT PROGRAMMES

Advanced Aerospace Engineering MSc (Eng)

The MSc (Eng) Advanced Aerospace Engineering focuses on the understanding of the core subjects in Aerospace Engineering, along with knowledge and skills in mathematics, computing, design and business studies. The modules give you the knowledge and skills to integrate technical insight and manage projects to tackle 'whole aircraft' issues in the industry. Topics include Configurational Aerodynamics, Aerostructures and Aeroelasticity, Rotorcraft Flight, Flight Handling Qualities and IC Engines. You will have access to our state-of-the-art research standard, full motion flight simulators (one of which is unique within the academic world), wind tunnels and the Virtual Engineering Centre, one of the UK's leading virtual facilities.

Advanced Manufacturing Systems and Technology MSc (Eng)

The Advanced Manufacturing Systems and Technology MSc has been developed in conjunction with industry partners to develop industry ready engineers. The programme is designed to provide advanced level knowledge, breadth and depth for modern manufacturing engineers and managers. Fully accredited by the Institution of Mechanical Engineers UK, this programme is constantly updated to reflect the latest developments in technology, management tools and methodologies.

| Taught programmes | Mode of delivery | Campus | UK and EU fees | International fees |
|---|------------------------|-----------|-------------------|--------------------|
| Advanced Aerospace Engineering MSc (Eng) | Full-time | Liverpool | £6,000 | £16,850 |
| Advanced Manufacturing Systems and Technology MSc (Eng) | Full-time | Liverpool | £6,000 | £16,850 |
| Advanced Mechanical Engineering MSc (Eng) | Full-time | Liverpool | £6,000 | £16,850 |
| Advanced Transdisciplinary Design MSc* | Full-time Part-time | London | £10,000 £5,000 | £18,400 |
| Biomedical Engineering MSc (Eng) | Full-time | Liverpool | £6,000 | £16,850 |
| Product Design and Management MSc (Eng) | Full-time | Liverpool | £6,000 | £16,850 |
| Risk and Uncertainty MSc (Eng) | Full-time | Liverpool | £6,000 | £13,950 |
| Sustainable Civil and Structural Engineering MSc (Eng) | Full-time Part-time | Liverpool | £6,000 £3,000 | £16,850 |

*For more information on the Advanced Transdisciplinary Design MSc, see Architecture on page 48.

For the very latest information on fees and scholarships, including Government loans and initiatives, visit www.liverpool.ac.uk/study/postgraduate/finance

In the Research Excellence Framework 2014, our research was ranked 5th in UK for 4* and 3* research (world leading and internationally excellent research)

Our teaching programmes are also highly rated and this is underpinned by an extensive programme of research.

Outstanding facilities

The School of Engineering has a well-deserved and highly respected reputation for its excellent experimental and computational facilities. Our £32 million redevelopment includes the state-of-the-art 'Active Learning Labs', a cutting-edge teaching facility, one of the largest and best equipped in Europe. We have two research-standard full motion flight simulators (one of which is unique in the academic world), mechanical robotics, wind turbines, water flumes, additive layer manufacturing and many more facilities.

Advanced Mechanical Engineering MSc (Eng)

This programme will provide you with a sound understanding of Advanced Mechanical Engineering principles and the ability to undertake teamwork and communicate ideas. It will develop your understanding and knowledge of the principles of Advanced Mechanical Engineering to an advanced level.

You'll develop specialist knowledge in thermo and fluid dynamics, combustion in IC engines, alternative and conventional energy generation methods and nuclear engineering. You will be taught techniques for managing projects and research, giving you highly desirable skills for working in industry.

Biomedical Engineering MSc (Eng)

The growth of biomedical engineering is being driven by the demand for new treatments for diseases for the ageing worldwide population. It is the fastest growing engineering discipline worldwide, with a projected 72% increase in biomedical engineering jobs in the USA alone over the next 10 years. The Biomedical Engineering MSc at the University of Liverpool is at the forefront of advancing these areas. You will develop specialist knowledge in the main biomedical engineering areas including biomechanics, tissue engineering and biomaterials.

Product Design and Management MSc (Eng)

This programme provides advanced training in all major aspects of product design from conceptual design and product modelling to prototyping to a high level of competence. This programme will train you to develop reliable, high quality products with true market appeal, within the budgets and tight timescales demanded by competitive businesses. This programme is fully accredited by the Institution of Mechanical Engineers.

Risk and Uncertainty MSc (Eng)

The MSc in Risk and Uncertainty aims at providing students with both qualitative and quantitative tools for structuring problems, describing uncertainty, assessing risks, and reaching decisions. This MSc programme provides a unique opportunity for training professionals and graduates who are able to communicate across the boundaries of traditional disciplines, such as architecture, computer science, engineering, environmental sciences, finance, law, management, mathematics, psychology and social sciences.

Sustainable Civil and Structural Engineering MSc (Eng)

The Sustainable Civil and Structural Engineering MSc provides an opportunity for you to develop advanced specialist knowledge in structural engineering, understand how to address the increasing challenges for the industry and develop your skills for the working environment. The modules focus on sustainability and durability of construction, whilst exploring in depth the influences and impact that climate change has on building and water related environments.

For full details of all the modules on offer consult the Engineering Postgraduate Brochure 2017, available on request, or visit www.liverpool.ac.uk/study/postgraduate/courses/taught

RESEARCH OPPORTUNITIES

Postgraduate research opportunities are listed on page 101. Full details can be found at www.liverpool.ac.uk/study/postgraduate/courses/research

Contacting Engineering

Postgraduate Admissions Tutor

T: +44 (0)151 794 4902

E: pgeng@liverpool.ac.uk

www.liverpool.ac.uk/engineering



English

We are one of the highest-rated research-led English departments in the UK (Ranked 10th in the UK for 4* and 3* research in the Research Excellence Framework 2014). We offer opportunities to study literature from a wide variety of periods and genres, and a range of approaches to understanding the way in which the English language works. You will be taught by leading experts who draw on cutting-edge research to inform their teaching practice.

TAUGHT PROGRAMMES

Applied Linguistics MA

We've designed this programme for teachers, teacher trainers and materials writers in the field of Foreign Language Teaching (particularly English as a Foreign Language). Our tutors have many years' experience of teaching English to speakers of other languages, in Britain and overseas, and they're very experienced teacher trainers, with active research interests in Applied Linguistics and TESOL related areas. Normally you'll need a first degree and relevant professional experience before applying for this programme.

Teaching English to Speakers of Other Languages (TESOL) MA

This is the ideal programme if you'd like to teach English as a foreign language or are already doing so but would like more training. This is a demanding programme, especially for non-native English speakers, so we provide excellent guidance and support, through Study Skills sessions and individual coaching.

Our tutors have many years' experience of teaching English to speakers of other languages, in Britain and overseas, and they're very experienced teacher trainers, with active research interests in TESOL related areas.



| Taught programmes | Mode of delivery | Campus | UK and EU fees | International fees |
|--|------------------|-----------|----------------|--------------------|
| Applied Linguistics MA | Full-time | Liverpool | £5,700 | £13,000 |
| Teaching English to Speakers of Other Languages (TESOL) MA | Full-time | Liverpool | £6,100 | £13,950 |
| Arts MRes | Full-time | Liverpool | £4,121 | £14,100 |
| | Part-time | | £2,060 | |
| English MA | Full-time | Liverpool | £5,700 | £13,000 |
| | Part-time | | £2,850 | |
| English: Modern and Contemporary Literature MA | Full-time | Liverpool | £5,700 | £13,000 |
| | Part-time | | £2,850 | |
| English: Victorian Literature MA | Full-time | Liverpool | £5,700 | £13,000 |
| | Part-time | | £2,850 | |
| English: Renaissance and Eighteenth-Century Literature MA | Full-time | Liverpool | £5,700 | £13,000 |
| | Part-time | | £2,850 | |

Please note that the fees shown for the MRes programmes are for entry 2016 and will rise for entry 2017.

For the very latest information on fees and scholarships, including Government loans and initiatives, visit www.liverpool.ac.uk/study/postgraduate/finance

Arts MRes

The Arts MRes allows you to undertake a research project in one or more of the School of the Arts' key subject areas: Architecture, Communications and Media, English, Music and Philosophy. You will receive training in research skills and supervision from one or more academic specialists in their subject area(s).

The programme provides excellent preparation for you if you're intending to undertake a PhD in the Arts and Humanities, but is also a good choice if you wish to pursue a research project for purposes of professional development or personal interest.

English MA

The MA in English offers a superb spread of taught literature modules ranging chronologically from the Renaissance to the present. Reflecting the wide and distinctive expertise of staff in the Department of English, the MA embraces subjects from early travel writing to Science Fiction, from Victorian realism to contemporary poetry.

You may want to explore literature from across several different periods, making your own choices from the modules we offer – and making your own connections between the texts you read. You can enrol on the MA in English and choose from any of our taught literature modules.

Alternatively, you may know already that you would like to specialise in a particular period. If so, we offer three period-specific pathways (Renaissance and Eighteenth-Century Literature, Victorian Literature and Modern and Contemporary Literature) as part of our English MA which will allow you to develop your understanding in depth.

English MA pathway options

English: Modern and Contemporary Literature MA

Modules offered on the Modern and Contemporary Literature pathway draw on the expertise of a cluster of academic staff whose research focuses on modernism, postmodernism, postcolonialism, and contemporary poetry. Your studies will be shaped and informed by some of the leading researchers in the literature and culture of the twentieth and twenty-first centuries who will teach you in small group tutorials which aim to develop your own interests in the field.

Regular visits by a range of international writers and poets will enhance your study and you will have the opportunity to participate in an annual master class taught by a critically acclaimed contemporary writer or thinker.

English: Victorian Literature MA

Whether you simply enjoy Victorian literature or are looking to prepare for further research, the Victorian Literature pathway provides a comprehensive training in nineteenth-century literature and culture. This pathway also offers the opportunity for students to go on organised visits to local Victorian heritage sites, and attend informal postgraduate colloquia with like-minded students from other local universities in the stunning surroundings of Gladstone's Library in North Wales.

English: Renaissance and Eighteenth Century Literature MA

This pathway explores The Renaissance and the 18th century periods; two of the richest periods in English literature, as well as areas in which some of the most exciting new critical and textual scholarship has been concentrated. The relations between these periods are made especially close by the conflicts as well as the continuities that can be traced between them.

For full details of all the modules on offer consult the English Postgraduate Brochure 2017, available on request, or visit www.liverpool.ac.uk/study/postgraduate/courses/taught

RESEARCH OPPORTUNITIES

Postgraduate research opportunities offered by English can be found on page 100. Full details can be found at www.liverpool.ac.uk/study/postgraduate/courses/research

Contacting English

Taught programmes

T: +44 (0)151 795 0500

E: sscarts@liverpool.ac.uk

Research programmes

E: pgarts@liverpool.ac.uk

www.liverpool.ac.uk/english



Geography

Geography at the University of Liverpool has a thriving postgraduate community. Our taught programmes offer the opportunity to learn from leading researchers in Human or Physical Geography and give you access to our award winning and world class facilities.

Excellent support for all postgraduate students

Our class sizes tend to be smaller than other institutions and the transition from undergraduate to postgraduate study is well supported. You will have access to excellent facilities and there is dedicated space for both taught and research students.

Strong collaborations

We are part of the ESRC North West Doctoral Training Centre, the NERC Manchester and Liverpool Doctoral Training programme, and the multidisciplinary EPSRC and ESRC Centre for Doctoral Training on Quantification and Management of Risk and Uncertainty. This offers opportunities for funding for PhD study. Our Contemporary Human Geography (Research Methods) MA, Geographic Data Science MSc and Population and Health MSc are ESRC recognised for 1+3 study.

TAUGHT PROGRAMMES

Contemporary Human Geography (Research Methods) MA

This programme will provide advanced training in geographical thought and analysis. You can choose either of two pathways; Social/Cultural Geography or Population Studies. These pathway areas are based on the research expertise of the Human Geography staff within the Department.

| Taught programmes | Mode of delivery | Campus | UK and EU fees | International fees |
|--|------------------------|-----------|------------------|--------------------|
| Contemporary Human Geography (Research Methods) MA | Full-time Part-time | Liverpool | £6,000 £3,000 | £13,950 |
| Environment and Climate Change MSc | Full-time Part-time | Liverpool | £6,700 £3,350 | £17,500 |
| Environmental Sciences MSc | Full-time Part-time | Liverpool | £6,700 £3,350 | £17,500 |
| Geographic Data Science MSc | Full-time | Liverpool | £6,000 | £13,950 |
| Population and Health MSc | Full-time Part-time | Liverpool | £6,000 £3,000 | £13,950 |

For the very latest information on fees and scholarships, including Government loans and initiatives, visit www.liverpool.ac.uk/study/postgraduate/finance



Environment and Climate Change MSc

This programme is focused on understanding processes, both natural and anthropogenic, which have contributed to contemporary environmental problems and which threaten to transform our environment. The programme has a strong practical component with specialist training in a wide variety of field and laboratory techniques.

Environmental Sciences MSc

This programme is focused on developing high level understanding of the physical environment and how society interacts with it. There is considerable flexibility that allows you to develop your own postgraduate degree programme; the degree benefits from the development of the School of Environmental Sciences drawing on modules from across the School.

Geographic Data Science MSc

This programme develops a high level understanding of quantitative and computational geographical methods. This includes skills in GIS software and statistical programming languages, such as R or Python. Within an applied setting, emphasis is placed on developing skills in the visualisation, modelling and statistical analysis of spatial data using both web-based and traditional techniques.

Population and Health MSc

This programme provides insight into the challenges posed by population change and health dynamics in the contemporary world, giving you a deep understanding of population and health trends and competing explanations.

You will cover these issues from an interdisciplinary perspective, including geographic, demographic, sociological, environmental and epidemiological approaches, and receive advanced methodological training in how to explore societal change.

For full details of all the modules on offer consult the School of Environmental Sciences Postgraduate Brochure 2017, available on request, or visit www.liverpool.ac.uk/study/postgraduate/courses/taught

RESEARCH OPPORTUNITIES

Postgraduate research opportunities are listed on page 101. Full details can be found at www.liverpool.ac.uk/study/postgraduate/courses/research

Contacting Geography

Postgraduate Admissions Tutor

T: +44 (0)151 794 3125

E: soesresearch@liverpool.ac.uk

www.liverpool.ac.uk/geography



Health Sciences

We draw on over 100 years of teaching delivered by dedicated staff with real-world, practical experience, and are a hub for an extensive network of professionals, academics and researchers. You can be confident that a postgraduate qualification from the School of Health Sciences will prepare you for a lifelong career of making a difference in today’s multidisciplinary, patient-focused healthcare services.

| Taught programmes | Mode of delivery | Campus | UK and EU fees | International fees |
|--|------------------------|--|------------------|---|
| Advanced Practice in Healthcare MSc/PGDip/PGCert | Part-time | Liverpool | £6,800 | £16,700 |
| Nursing MSc* | Full-time Part-time | Liverpool | £6,800 £3,400 | £16,700 plus £3,000 English Language Support |
| Radiotherapy PGDip | Full-time (2 years) | Liverpool, plus clinical placements at North West Cancer Centres | TBC | TBC |
| Radiotherapy MSc | Part-time | Liverpool | TBC | TBC |

*Please note this programme is subject to University approval.

For the very latest information on fees and scholarships, including Government loans and initiatives, visit www.liverpool.ac.uk/study/postgraduate/finance

Clinical placement sites – second to none

We are the only Russell Group University delivering Radiotherapy education programmes.

Our radiotherapy clinical placements are delivered at three internationally renowned cancer centres; The Christie NHS Foundation Trust, the Clatterbridge Cancer Centre and Rosemere Cancer Centre.

21st century facilities and equipment

You’ll have access to our CT scanner, Virtual Reality Radiotherapy Suite, Human Anatomy Resource Centre, Oncology Management System, and Eclipse Treatment Planning System.

TAUGHT PROGRAMMES

Advanced Practice in Healthcare MSc

For students wanting to study a flexible programme, we have the Advanced Practice in Healthcare MSc. This progressive and flexible programme has an overarching theme of advanced practice in healthcare but permits healthcare professionals to structure their studies to meet their own professional needs.



The programme is also available to be studied at Postgraduate Certificate or Postgraduate Diploma level or individual modules can be studied as part of your continuing professional development. You can progress through these levels on successful completion of each stage.

Nursing MSc

The Nursing MSc aims to nurture innovative professional practitioners, who wish to advance their knowledge and develop nursing within their specialist fields. The programme is delivered through a series of modules which address the four cornerstones of professional nursing at an advanced level. The Nursing MSc provides you with a solid foundation for the further development of your nursing career, and is suitable for you if you wish to become a specialist nurse, nurse manager, nurse educators or nurse researcher.

The programme content exposes you to key issues and ideas relating to communication, leadership, education and research. The modular structure of the programme also allows you to focus your postgraduate studies on your own area of professional interest, and the dissertation module gives you an opportunity for in-depth study of your topic.

Radiotherapy PGDip

Successful completion of this two-year programme, allows you to practice as a Therapeutic Radiographer within the National Health Service or private health sector.

Therapeutic radiographers play a vital role in the treatment of cancer patients as they are the only health professional qualified to plan and deliver radiotherapy. Crucially, they also support and care for patients throughout their treatment.

The programme, a mixture of academic and clinical placement blocks, is studied full-time over two calendar years, commencing in January. 50 weeks of the programme are delivered at the University integrated with 43 weeks of professional, clinical placement. The blocks of radiotherapy clinical placement will be delivered in the three main Cancer Centres in the North West of England – The Christie NHS Foundation Trust (and its two satellite centres), the Clatterbridge Cancer Centre (and its satellite centre) and Rosemere Cancer Centre.

Radiotherapy MSc

On completion of the Radiotherapy PGDip, or an equivalent pre-registration postgraduate dipoloma, you are able to complete an additional 60 credits of research or independent study to gain the Radiotherapy MSc. Our Directorate staff have a wide range of expertise including medical physics in radiotherapy, computer treatment planning, imaging in radiotherapy, general cancer care and strategic planning of cancer services locally and nationally, so are able to support dissertations in all aspects of radiotherapy and cancer care.

RESEARCH OPPORTUNITIES

Postgraduate research opportunities offered within the Faculty of Health and Life Sciences are listed on page 101. Full details can be found at www.liverpool.ac.uk/study/postgraduate/courses/research

Contacting the School of Health Sciences

Advanced Practice in Healthcare MSc and Nursing MSc

Miss Teri Harding

T: +44 (0)151 794 5661

E: terih@liverpool.ac.uk

Radiotherapy PGDip

Mr Sean Hollywood

T: +44 (0)151 794 9490

E: pgdipshs@liverpool.ac.uk

Radiotherapy MSc

Mrs Flora Al-Samarraie

T: +44 (0)151 794 5013

E: falsam@liverpool.ac.uk

Miss Teri Harding

T: +44 (0)151 794 5661

E: terih@liverpool.ac.uk

www.liverpool.ac.uk/healthsciences



History

Our research builds on our renowned tradition of making history accessible and relevant and examines how the past points the way to the future, tackling international themes at the forefront of debate today, from slavery and human trafficking to gang culture.

The International pathway programme is available for overseas students who want to meet the practice requirements of their home countries and who need a master's award to do so.



History MA/MRes

The History MA is suitable for you whether you've recently graduated or had a career break and would like to return to university. The programme also provides excellent training for those wishing to proceed to doctoral research.

You can choose from one of our four distinctive named pathways: **Cultural History; Twentieth Century History; Eighteenth Century Worlds; Medieval and Renaissance Studies.**

The **Cultural History** pathway encourages you to investigate artefacts and ideas, material objects and mentalities, medical documents and museums, photographs and films and explore key themes that have shaped the past, including national identity, gender, race, sexuality and modernity.

The **Twentieth Century History** pathway gives you the opportunity to study and reflect on major 20th century events, such as total war, the rise and fall of communism, the collapse of the European empires, the changing place of women in western society and the decline of traditional religious belief.

The **Eighteenth Century Worlds** pathway at Liverpool will take you on an investigative journey through the history, literature and visual and material culture of Europe and its interactions with the wider world, from the Atlantic to Asia.

This highly original interdisciplinary programme gives you the opportunity to study in one of Britain's leading Atlantic ports; a city rich in eighteenth-century history, architecture and culture.

| Taught programmes | Mode of delivery | Campus | UK and EU fees | International fees |
|---|------------------------|-----------|------------------|--------------------|
| Master in Archives and Records Management | Full-time Part-time | Liverpool | £6,900 £3,450 | £15,000 |
| Master in Archives and Records Management (International pathway) | Full-time Part-time | Liverpool | £6,900 £3,450 | £15,000 |
| History MA | Full-time Part-time | Liverpool | £5,600 £2,800 | £12,750 |
| History MRes | Full-time Part-time | Liverpool | £4,121 £2,060 | £14,100 |
| International Slavery Studies MA | Full-time Part-time | Liverpool | £5,600 £2,800 | £12,750 |

Please note that the fees shown for the MRes programmes are for entry 2016 and will rise for entry 2017.

For the very latest information on fees and scholarships, including Government loans and initiatives, visit www.liverpool.ac.uk/study/postgraduate/finance

Links with the city

Our studies of Liverpool's past have helped shape visions of the future for the city, and the region. In the same way, the work of our historians in the Institute of Irish Studies has had a strong impact on discussions about the past and the future in Ireland.

Our close collaborations with public bodies such as National Museums Liverpool help to bring academic research to the widest possible audiences. Research into youth gangs in Victorian England gave rise to a successful collaboration with a theatre group and influenced practitioners in the education, criminal justice and tourism sectors.

TAUGHT PROGRAMMES

Master in Archives and Records Management

This professional master's degree is accredited by the Archives and Records Association as the recognised qualification for archivists and records managers in the UK and Ireland.

You'll gain the knowledge you need to pursue an archives and records career in research, business, government, academia – indeed anywhere that qualified professionals are needed.

On the **Medieval and Renaissance Studies** pathway you'll study the myriad ways in which power was understood, communicated and exercised during the Middle Ages and Renaissance period (c.300-c.1700 CE).

Our **MRes** programme involves more independent study than the MA and is often a route to a PhD. It provides a personalised and focused introduction to research allowing you to develop as an independent researcher with the support of an expert in that area.

International Slavery Studies MA

This programme is one of the few programmes in the world to offer students the chance to study forced labour and slavery in a wide variety of past and present contexts. Your seminars, research and tutorials will range broadly, challenging you to analyse historical forms of slavery, to critique modern responses to human trafficking, to evaluate the legacies and memorialisation of slavery in contemporary society, and to apply critical and literary theories to surviving representations of slavery.

Drawing expertise from researchers across the University you will benefit from our unique relationship with the International Slavery Museum. You will work with the Museum's staff to study the commemoration and memorialisation of slavery, while the broader MA programme is a flagship activity for the Centre for the Study of International Slavery – a successful venture between the Museum and the University.

RESEARCH OPPORTUNITIES

All postgraduate research opportunities are listed on page 100. Full details can be found at www.liverpool.ac.uk/study/postgraduate/courses/research

Contacting History

E: hicevent@liverpool.ac.uk
www.liverpool.ac.uk/history



Irish Studies

Historically, the city of Liverpool has always had strong links with the north and south of Ireland. It has long been the hub of Irish migration and you will be in an ideal position to experience living in a multicultural society with a distinctive Irish component.



| Taught programmes | Mode of delivery | Campus | UK and EU fees | International fees |
|--------------------------------------|------------------------|-----------|------------------|--------------------|
| Irish Studies MA/PGDip/MRes | Full-time Part-time | Liverpool | £5,600 £2,800 | £12,750 |
| Social Justice and Peace Building MA | Full-time Part-time | Liverpool | £5,600 £2,800 | £12,750 |

Please note that the fees shown for the MRes programmes are for entry 2016 and will rise for entry 2017.

For the very latest information on fees and scholarships, including Government loans and initiatives, visit www.liverpool.ac.uk/study/postgraduate/finance

An important and influential Institute

The Institute of Irish Studies has played a significant part in Ireland's recent history with its achievements recognised in the award of a £5 million Tony Blair Chair in Irish Studies. We offer a unique learning environment with access to historic collections of Irish newspapers and the specialist Irish Studies McLua library. Teaching is research-led with staff drawing on their original research to provide you with a cutting edge and stimulating learning experience.

Bespoke placements

With strong and embedded links to the business, voluntary and private sectors, we tailor placements to your career ambitions. Placements include the Irish Embassy in London, the Northern Ireland Assembly, Co-operation Ireland, Poleglass Community Group, Pontifical Council for Justice and Peace in Rome and the Centre for Democracy and Peace Building in London and Northern Ireland.

Links with the Irish community

There are excellent links between the Institute and the Liverpool Irish community providing a rich seam to be mined for research purposes as well as opportunities for students to get involved in voluntary work.

Renowned speakers

The high external esteem of the Institute is reflected in the calibre of public lecturers it regularly attracts. In recent years, speakers have included President Michael D. Higgins, former President Mary McAleese, former Irish President Mary Robinson, Roddy Doyle, the late Seamus Heaney, John Hume, Peter Mandelson, US Senator George Mitchell, Paul Muldoon, Tom Paulin, Fintan O'Toole, Jonathan Powell, Dr John Reid, the late David Ervine, the late Dr Mo Mowlam, Peter Robinson and David Trimble.

The Institute also hosts events for the Liverpool Irish Festival every October and these have included lectures by the authors Blake Morrison and Patrick McCabe, the late filmmaker Peter Lennan and the Keeper of Antiquities of the National Museum of Ireland Dr Eamonn Kelly.



TAUGHT PROGRAMMES

Irish Studies MA/PGDip/MRes

On this academically stimulating interdisciplinary programme you will gain advanced knowledge of many aspects of modern Ireland, together with the research skills that can help you develop your career in a professional capacity or in preparation for further study, such as a PhD.

The programme is taught on a full or part-time basis at Liverpool as a postgraduate diploma or a full master's. The programme is taught by experts in Irish history, politics, culture, literature and drama, as well as the processes of peace-building in Northern Ireland.

Modules explore the historical controversies surrounding the idea of 'Irishness' and the history and nature of conflict in Ulster; the greatest Irish writers in world literature; concepts of invisibility and oppression and research methods to provide you with the transferable skills necessary to research and write at an advanced level which provide a grounding for PhD study and career progression.

Our MRes programme involves more independent study than the MA and is often a route to a PhD. It provides a personalised and focused introduction to research allowing you to develop as an independent researcher with the support of an expert in that area.

Social Justice and Peace Building MA

On this programme you'll gain an advanced insight into conflict, its causes and the best ways to resolve it, both from a Northern Irish and comparative perspective. The programme brings together disciplines such as history, law, political science and philosophy.

You'll not only study with leading academics in the field, but will also be able to attend public lectures by diplomats and politicians who themselves have been involved in bringing numerous conflicts to peaceful resolutions. All modules are taught in a small-group seminar format with student presentations forming a key part of each session.

RESEARCH OPPORTUNITIES

Postgraduate research opportunities are listed on page 100. Full details can be found at www.liverpool.ac.uk/study/postgraduate/courses/research

Contacting Irish Studies

Liverpool enquiries

E: hlcevent@liverpool.ac.uk

www.liverpool.ac.uk/irish

Law

The School of Law and Social Justice provides its postgraduates with an intellectually challenging and supportive learning environment. We invite ambitious individuals seeking to enhance their professional and personal skills to join our vibrant community, enrich our culture of research and teaching excellence, and help promote our vision in using Law to create a more just and fair society.

Academic excellence

The School of Law and Social Justice challenges its student community to be passionate about learning and research. Academic excellence is a lifelong pursuit, which begins from the time you join us, and continues throughout your career. You will be an important part of our research clusters aiming to extend the boundaries of academic excellence.

Active research

Our modules draw on staffs' active research, and are designed to provide you with perspectives that promote critical awareness and understanding. Staff research has been presented at diverse events and locations such as national and international conferences, and political institutions.

Employability

In addition to providing postgraduates with an enriched and rewarding experience, we also believe that students studying at the School of Law and Social Justice are equipped with legal knowledge and skills to pursue their dream careers. Networking events with alumni and leading practitioners and participation in invited speaker events is intended to inspire and challenge students. Career advice and employability sessions are tailored to provide students with additional opportunities for support and development.

Our postgraduate taught programmes

All our programmes are available to be studied at Postgraduate Certificate, Postgraduate Diploma and LLM levels. You can progress through these levels on successful completion of each stage.

| Taught programmes | Mode of delivery | Campus | UK and EU fees | International fees |
|--------------------------------|------------------------|-----------|--|--------------------|
| LLM/PGDip/PGCert | Full-time Part-time | Liverpool | £5,700 £2,650 | £13,850 |
| Business Law and Economics MSc | Full-time | London | £12,400 | £18,550 |
| LLM International Business Law | Flexible | Online | Visit www.liverpool.ac.uk/study/online | |

For the very latest information on fees and scholarships, including Government loans and initiatives, visit www.liverpool.ac.uk/study/postgraduate/finance

Learn from leading experts

Postgraduates joining us in the School of Law and Social Justice will be integrated into a culture that constantly seeks to inspire excellence and encourage innovative perspectives towards grappling with complex economic, social and cultural issues and challenges. Our modules are delivered by researchers and experts in their fields and our workshops are designed to hone critical thinking and reflective skills. Opportunities are provided to collaborate with our innovative research centres and participate in exciting research, events and conferences.

Study at Liverpool Law School

As a postgraduate student you will have the opportunity to learn at a university which has a long tradition of providing students with a friendly and supportive environment for teaching and learning. You will be exposed to a diverse range of postgraduate programmes to accommodate your particular spheres of interest, as well as more eclectic tastes. Student learning and experience is an important part of our goal. In addition to enabling you to benefit from innovative teaching and learning techniques, we also enable you to network with legal, medical, humanitarian and commercial firms and organisations.



Ming Yong
LLM International Human Rights Law

The University of Liverpool was my first choice for postgraduate study, not only because I was a previous student of the university and could attest to its level of professionalism, but also because it offered a range of specialist modules which I had a genuine interest in studying.

TAUGHT PROGRAMMES

Our programmes are delivered either full or part-time at our Liverpool or London Campus or by flexible learning with online delivery and provide you with an in-depth knowledge and understanding of your chosen subject area. Modules are designed to draw on the experience and research excellence of the teaching staff. Active research interests of staff ensure specifically tailored and distinctive modules, with visits from respected guest speakers offering seminars on some programmes.

LLM/PGDip/PGCert

Please note that we are currently reviewing our portfolio of LLM programmes and pathways to offer research driven, distinctive and challenging programmes of study. For the very latest information, visit www.liverpool.ac.uk/study/postgraduate/courses/taught

Business Law and Economics MSc

This programme has been established by Liverpool Law School and our AACSB-Accredited Management School in response to growing demands from national and international employers for law and economics experts who can make informed choices in governance, competition and regulatory compliance issues increasingly facing firms in the international business environment.

During the programme you will work on analysing and solving the economic and legal problems which many organisations encounter from increasing global competition and at times opposing and clashing regulatory demands emanating from the national, EU and transnational legal systems. The programme will also familiarise you with economic dynamics underlying the legal and management choices made by firms. Our programme is sensitive to global justice caused by the increasing globalisation of business practices and the increasing competitive pressure facing businesses. This programme is delivered at our London Campus.

For full details of law modules and programmes on offer visit www.liverpool.ac.uk/study/postgraduate/courses/taught

Online programmes

Full details of our online programmes can be found at www.liverpool.ac.uk/study/online/programmes

RESEARCH OPPORTUNITIES

Postgraduate research opportunities are listed on page 100. Full details can be found at www.liverpool.ac.uk/study/postgraduate/courses/research

Contacting Liverpool Law School

Taught programmes
E: slsjenq@liverpool.ac.uk

Research programmes
E: slsjpgr@liverpool.ac.uk
www.liverpool.ac.uk/law



Life Sciences

You'll study in one of the largest Schools of Life Science in the UK drawing on over 100 years of teaching and research experience, meaning you can shape your studies by choosing modules from across the entire spectrum of the life sciences; a breadth of choice unique in the UK.

Pathways include:

- Animal Sciences
- Bioinformatics
- Biotechnology
- Cell Signalling
- Chemical Biology
- Conservation Biology
- Evolution and Behavioural Biology
- Food Security
- Functional and Comparative Genomics
- Host: Parasite Biology
- Human Immunity
- Microbiology
- Molecular Oncology
- Plant Sciences
- Post-Genomic Science
- Structural Biology

Our MRes programme involves more independent study than the MSc and is often a route to a PhD. It provides a personalised and focused introduction to research allowing you to develop as an independent researcher with the support of an expert in that area.

Full details of our MRes programme can be found at www.liverpool.ac.uk/study/postgraduate

RESEARCH OPPORTUNITIES

Postgraduate research opportunities offered within the Faculty of Health and Life Sciences are listed on page 101. Full details can be found at www.liverpool.ac.uk/study/postgraduate/courses/research

Contacting the School of Life Sciences

Keith Hatton
T: 0151 795 4415
F: 0151 795 5116
E: kjhatton@liverpool.ac.uk
www.liverpool.ac.uk/life-sciences

| Taught programmes | Mode of delivery | Campus | UK and EU fees | International fees |
|-----------------------------------|------------------|-----------|----------------|--------------------|
| Advanced Biological Sciences MSc | Full-time | Liverpool | £6,800 | £16,700 |
| Advanced Biological Sciences MRes | Full-time | Liverpool | £4,121 | £18,000 |

Please note that the fees shown for the MRes programmes are for entry 2016 and will rise for entry 2017.

For the very latest information on fees and scholarships, including Government loans and initiatives, visit www.liverpool.ac.uk/study/postgraduate/finance

Shape your study with real flexibility and choice

To complement your study in the School of Life Sciences, you'll also enjoy links to our Schools of Medicine, Dentistry and Veterinary Science, and the Liverpool School of Tropical Medicine.

Work in leading-edge facilities

Life science is at the leading-edge of science and so are our facilities. Over £30 million has recently been invested in the School's facilities, such as our Biology Teaching Centre, the state-of-the-art Biosciences Building, the Biomedical Sciences Building and the Human Anatomy Resource Centre. This ensures your studies are fully supported by the very best in teaching and research equipment.

TAUGHT PROGRAMMES

Advanced Biological Sciences MSc/MRes

Through the ethos of research-led teaching, our MSc in Advanced Biological Sciences will provide you with an innovative and rewarding experience within an excellent environment of state-of-the-art research laboratories, cutting-edge provision for proteomics, genomics, advanced genome sequencing and analysis, a cell imaging suite, transgenic plants facility and an NMR centre for protein structure analysis.

We have developed bespoke pathways to MSc awards across all of our research areas, affording you the opportunity to develop your own postgraduate degree programmes.

Management

AACSB-Accredited, the University of Liverpool Management School is in the top 5% of business schools worldwide. Regarded as one of the most rigorous assessments, many top global recruiters will only consider candidates from AACSB-Accredited schools – a clear signal that our programmes respond to the needs of business and meet specific standards of excellence.



| Taught programmes | Mode of delivery | Campus | UK and EU fees | International fees |
|--|------------------------|------------------------|--|--------------------|
| Accounting DPS | Full-time | London | TBC | TBC |
| Accounting MSc | Full-time | London | £12,400 | £20,000 |
| Big Data Management MSc/PGDip/PGCert | Full-time Part-time | Liverpool | £8,500 £4,250 | £16,500 |
| Business Administration (Football Industries) PGCert | Full-time | Liverpool | £5,000 | £7,167 |
| Business Law and Economics MSc | Full-time | London | £12,400 | £20,000 |
| Corporate Finance MSc/PGDip/PGCert | Flexible | Online | Visit www.liverpool.ac.uk/study/online/ | |
| Digital Business Enterprise Management MSc | Full-time Part-time | Liverpool | £8,500 £4,250 | £16,500 |
| Economics MSc | Full-time | Liverpool | £8,500 | £16,500 |
| Entrepreneurship MSc | Full-time Part-time | Liverpool | £8,500 £4,250 | £16,500 |
| Executive Healthcare Leadership and Management PGCert* | Part-time | London | Visit www.liverpool.ac.uk/management/executive/ | |
| Executive Masters in International Trade Compliance | Part-time | London | Visit www.liverpool.ac.uk/management/executive/international-trade-compliance/ | |
| Finance MSc/PGDip/PGCert | Full-time Part-time | Liverpool | £9,500 £4,750 | £18,000 |
| Finance and Investment Management MSc | Full-time | London | £12,400 | £20,000 |
| Financial Risk Management MSc | Full-time Part-time | Liverpool Liverpool | £9,500 £4,750 | £18,000 |

*Please note, this programme is subject to University approval.

Management *(Continued)*

| Taught programmes | Mode of delivery | Campus | UK and EU fees | International fees |
|---|------------------------------------|-------------------------|--|--------------------|
| Football Industries MBA | Full-time Part-time | Liverpool | £15,000 £7,500 | £21,500 |
| Human Resource Management MSc (CIPD Accredited) | Full-time Part-time | Liverpool | £8,650* £4,325 | £16,650* |
| Human Resource Management MSc/PGCert | Flexible | Online | Visit www.liverpool.ac.uk/study/online/ | |
| International Accounting and Finance MSc/PGDip/PGCert | Flexible | Online | Visit www.liverpool.ac.uk/study/online/ | |
| International Business MSc | Full-time Part-time | Liverpool | £8,500 £4,250 | £16,500 |
| Liverpool MBA | Full-time Part-time | Liverpool | £15,000 £7,500 | £21,500 |
| Management MSc | Full-time Part-time | Liverpool | £9,500 £4,750 | £18,000 |
| Management MSc/PGCert | Flexible | Online | Visit www.liverpool.ac.uk/study/online/ | |
| Management MRes | Full-time Part-time | Liverpool | £4,121 £2,060 | £14,100 |
| Management and Entrepreneurship MSc | Full-time Part-time | Liverpool | £8,500 £4,250 | £16,500 |
| Marketing MSc | Full-time Part-time | Liverpool | £8,500 £4,250 | £16,500 |
| Marketing MSc/PGCert | Flexible | Online | Visit www.liverpool.ac.uk/study/online/ | |
| Master of Business Administration MBA/PGCert | Flexible | Online | Visit www.liverpool.ac.uk/study/online/ | |
| Operations and Supply Chain Management MSc/PGDip/PGCert | Full-time Part-time Flexible | Liverpool Online | £9,500 £4,750 Visit www.liverpool.ac.uk/study/online/ | £18,000 |
| Programme and Project Management MSc | Full-time Part-time | Liverpool | £8,500 £4,250 | £16,500 |
| Project Management MSc/PGDip/PGCert | Flexible | Online | Visit www.liverpool.ac.uk/study/online/ | |
| Public Administration MPA/PGDip/PGCert | Flexible | Online | Visit www.liverpool.ac.uk/study/online/ | |
| Thoroughbred Horseracing Industries MBA | Full-time Part-time | Liverpool | £15,000 £7,500 | £21,500 |

*Includes CIPD EISO student membership fee.

Please note that the fees shown for the MRes programmes are for entry 2016 and will rise for entry 2017.

Study at a leading Management School

The School offers a full range of postgraduate management education, encompassing MBA, Master's, Executive Education and research programmes. Our general and specialist MBA programmes enable experienced managers to develop their leadership skills. We also deliver an International MBA in collaboration with Xi'an Jiatong-Liverpool University (XJTLU), an international university format in partnership between the University of Liverpool and Xi'an Jiaotong University in China.

Our MSc programmes are designed for people who wish to begin their career in management or who wish to study business and management subjects for the first time or those who want to specialise in a particular area.

Fit study into your life

We are able to offer flexible modes of studying, including part-time, online and blended learning. This gives you the opportunity to learn while remaining employed, with 24 hour flexibility. The London Campus also offers the opportunity to study with us in the capital.

Learn in outstanding facilities

In 2016, the School opened a £10 million extension with state-of-the-art facilities befitting a world-leading management school. The new building includes a trading floor, marketing suite and flexible teaching space.

TAUGHT PROGRAMMES

Accounting and Finance DPS (Diploma in Professional Studies)

If you want to switch direction from your undergraduate degree or embark on a career in accounting, this exciting conversion course is for you. You will graduate as a part-qualified accountant, with ICAEW and ACCA examination exemptions,* ready to progress on to our MSc Accounting or employment in an accounting firm.

*Pending approval.

Accounting MSc

This programme offers you the opportunity to attain a postgraduate degree from a Russell Group university and simultaneously gain exemptions (credit for prior learning) from Professional Level examinations for the Institute of Chartered Accountants in England and Wales (ICAEW), a prestigious globally respected professional accounting qualification. Additionally, students will be prepared for and, if successful in gaining credit for all the related Professional Level modules, be entered into ICAEW Advanced Level exams.

The programme provides postgraduate level education in core areas of accounting and finance including corporate reporting, assurance, business strategy, finance, taxation, marketing, corporate governance and ethics. The programme is run at our London Campus.

Big Data Management MSc/PGDip/PGCert

This programme will prepare you as one of tomorrow's managers and business executives with unique exposure to current business opportunities, challenges and developments in the area of Big Data Management.

Business Administration (Football Industries) PGCert

The Certificate in Business Administration Football Industries course provides those who hold an MBA (or international equivalent), with the opportunity to study the MBA Football Industries football-related modules. The modules, which are delivered in partnership with The National Football centre, St George's Park, focus on aspects of the football industry such as professionalism, business and marketing. The certificate is also suitable for those seeking to work in, or those already working in football, with modules suitable for clubs, governing bodies or related marketing, media and sponsorship companies.

Business Law and Economics MSc

The MSc Business Law and Economics programme has been established by our Law School and Management School in response to growing demands from national and international employers for law and economics experts who can make informed choices in governance, competition and regulatory compliance issues increasingly facing firms in the international business environment. This programme is run at our London Campus.

Digital Business Enterprise Management MSc

Designed by one of the UK's leading research groups in Digital Business and Operations and Supply Chain Management this programme is managed and delivered by the Marketing and Operations Group, which has an excellent record in research and industrial collaboration at a regional, national and international level. As a leader in its field, the Management School has selected to partner with SAP to support its teaching programmes. The Management School was one of the first to join the SAP UK Universities Alliance Programme and is currently a steering group member for the SAP UK Alliance Programme.

Economics MSc

MSc Economics places much emphasis on the area of mathematics and has been designed particularly for those students who intend to continue their studies on to PhD level, within the fields of Economics or Financial Economics, potentially pursuing a career in academia.

Entrepreneurship MSc

If you already run your own small business or have a clear idea of one you wish to start up, MSc Entrepreneurship can help you to update your skill set and achieve your ambitions. If you plan to work in your family business, this would also be the ideal programme for you.

You will learn the art of selling and the science of negotiation in this practical course which will prepare you for the realities of establishing and developing a new venture. You will take part in hands-on live projects where you will learn through cutting-edge forms of assessment in a unique approach to enterprise education.

Executive Healthcare Leadership and Management PGCert

A collaboration between the Postgraduate School of Medicine and the University Management School, this programme teaches knowledge and skills enabling students to become adaptive leaders who can deliver patient-centred healthcare. This programme meets the needs of senior clinicians and managers in the NHS and the healthcare industry globally today. Based at our London Campus, the four modules that comprise the Postgraduate Certificate are delivered in residential blocks, on a part-time basis, allowing students to continue working while they study.

Management *(Continued)*

Executive Masters in International Trade Compliance

Our fully accredited, part-time Executive Masters in International Trade Compliance (EMITC) is unique, ground-breaking and directly implementable to the workplace.

The University of Liverpool Management School created the EMITC in partnership with Full Circle Compliance (FCC), a leading International Trade Compliance consultancy with offices in Europe and Washington. Jointly, we have unparalleled access to government agencies and thought leaders in the field.

Our approach will ensure a deep learning process that leads to a sustainable change for you personally, for your organisation and for its Internal Compliance Programme (ICP).

Finance MSc/PGDip/PGCert

This programme provides a firm foundation in Finance, Financial Economics and Empirical Finance. The MSc is specifically designed to support career entry and development in the financial sectors, government agencies and to higher education.

Finance and Investment Management MSc

Based within minutes of London's financial heartland, the University of Liverpool in London is perfectly situated for students considering the MSc Finance and Investment programme. The MSc syllabus draws extensively from the Chartered Financial Analyst (CFA)[®] programme curriculum and students will be supported to sit the CFA Level 1 examination alongside their MSc programme studies. The CFA qualification is a globally recognised, postgraduate designation that provides a strong foundation of investment analysis and portfolio management skills along with the practical knowledge required in the modern investment industry. Successful candidates will therefore graduate with an MSc from a Russell Group institution and having passed Level 1 of the CFA qualification.

Financial Risk Management MSc

This programme will provide you with the mathematical and econometric skills and financial training necessary to address the issues related to quantifying, pricing and managing exposures to risk in the financial markets.

Football Industries MBA

The MBA Football Industries (FIMBA) programme is the original, and still the only, Football Industries MBA. As an MBA programme, it has the real business focus that management positions in modern sport demand. The MBA focuses on the professionalism and business of the beautiful game.

If you want to work in the global football industry, with clubs, governing bodies or related marketing, media and sponsorship companies, this is the MBA programme for you.

Human Resource Management MSc

Accredited by the Chartered Institute of Personnel and Development (CIPD), and based on cutting-edge research, this programme brings together practice and theory to give students a solid grounding in Human Resource Management. Students also have the opportunity to develop themselves as an individual. The programme is aimed at those who have not studied to any great depth in this subject area, who seek to develop the required knowledge and skills in order to pursue a career in Human Resource Management.

International Business MSc

The MSc International Business is for you if you want to pursue a career in international management. You may want to develop a more in-depth understanding of global business issues, or even study a business subject for the first time. The programme aims to provide a thorough understanding of management concepts as well as detailed knowledge of international business in theory and practice.

Liverpool MBA

If you're looking to develop your skills as an effective manager and potential leader, then the Liverpool MBA is the programme for you. You'll build a deeper understanding of core business and management disciplines and learn how they link together strategically and operationally.

Management MSc/MRes

This programme is suitable for students who would like to study management for the first time. The programme aims to provide a general overview of the processes of management and organisation and supports the development of subject specific and key transferable skills necessary for employment in management positions.

Our MRes programme involves more independent study than the MSc and is often a route to a PhD. It provides a personalised and focused introduction to research allowing you to develop as an independent researcher with the support of an expert in that area.

Management and Entrepreneurship MSc

This programme combines our core management modules with four entrepreneurship modules. The objective is to help develop your entrepreneurial skills which can then be used to start your own business or to help drive innovation and change in the context of larger organisations.

Marketing MSc

Accredited by the Chartered Institute of Marketing, this programme is ideal for developing a career as a marketing practitioner or in related professions. By successfully completing the programme, you will have exemption from the Strategic Marketing module on the CIM (Chartered Institute of Marketing) Level 6 professional qualification, which is highly sought after by marketing employers. You have three years after graduating to complete two further modules to gain the CIM Diploma.

Operations and Supply Chain Management MSc/PGDip/PGCert

Designed by one of the UK's leading Operations and Supply Chain Management research groups, the programme is accredited by the Chartered Institute of Procurement and Supply (CIPS) and the Chartered Institute of Logistics and Transport (CILT). The programme provides a theoretical and practical exposition of the factors necessary for effective operations and supply chain management in today's global and highly competitive markets. In addition, it demonstrates how successful operations performance can shape and influence the sales and profit ambition of a business. You will be equipped with a profound understanding of the processes and techniques for developing operations strategy and managing operations and supply chain activities. You will also be offered the opportunity to obtain the Six Sigma Green Belt and SAP Architect Professional qualifications.

Programme and Project Management MSc

This programme has been designed by one of the UK's leading Operations Management research groups. Our research work has attracted funding from one of the leading professional project management bodies, the PMI. The MSc in Programme and Project Management has been designed for graduates seeking to develop a career in a field which is gaining strong strategic importance in organisations, businesses and governments. In today's complex global business environment, effective project management skills are in demand.

Thoroughbred Horseracing Industries MBA

This unique Thoroughbred Horseracing Industries MBA is delivered through an exclusive partnership with Britain's Horserace Betting Levy Board and the British Horseracing Authority. The programme combines the Management School's expertise in sports industry management, with the specialist equine knowledge of the University School of Veterinary Science.

Executive Education

For further information on our Executive Master's programmes visit www.liverpool.ac.uk/management/executive/

Online programmes

For more on our online taught programmes please see www.liverpool.ac.uk/study/online/. Please note that in some cases the content of our online and on-campus programmes differ.

For details on our XJTLU IBSS based International MBA, please see www.xjtlu.edu.cn

For full details of all the modules on offer, consult the Management Postgraduate Brochure 2017 or our MBA Brochure, available on request, or visit www.liverpool.ac.uk/study/postgraduate/courses/taught

RESEARCH OPPORTUNITIES

Postgraduate research opportunities are listed on page 100. Full details can be found at www.liverpool.ac.uk/study/postgraduate/courses/research

The University of Liverpool also offers an online Doctor of Business Administration (DBA) programme. For more information visit www.liverpool.ac.uk/study/online

Contacting the Management School

The University of Liverpool Management School, Chatham Building Chatham Street, Liverpool L69 7ZH

MBA (Liverpool)

T: +44 (0)151 795 3718

MSc (Liverpool)

T: +44 (0)151 794 5927

London Campus enquiries

T: +44 (0)151 794 5927

Online programmes

T: +44 (0)151 795 2301

www.liverpool.ac.uk/management

Mathematical Sciences

92% of our research impact is judged outstanding and very considerable (REF 2014). Our research focuses on topics ranging from fundamental questions of theoretical mathematics and theoretical physics to applications in material science, biological systems, and financial mathematics.

| Taught programmes | Mode of delivery | Campus | UK and EU fees | International fees |
|---|------------------------|-----------|-----------------|--------------------|
| Financial Mathematics MSc/PGDip/PGCert | Full-time | Liverpool | £6,000 | £17,950 |
| Financial and Actuarial Mathematics MSc | Full-time | London | £10,000 | £18,750 |
| Mathematical Sciences MSc/PGDip/PGCert | Full-time Part-time | Liverpool | £6000 £3,000 | £13,950 |

For the very latest information on fees and scholarships, including Government loans and initiatives, visit www.liverpool.ac.uk/study/postgraduate/finance

Wide and varied research portfolio

Over the past six years we have solved fundamental questions of theoretical mathematics that had remained unsolved for decades, participated in ground-breaking work on the physics of the universe at CERN, discovered advanced materials with new properties, and pioneered new techniques in medical imaging. Our work has been recognised by a Whitehead Prize, a Senior Whitehead Prize, a Philip Leverhulme Prize, and the election of two Fellows of the American Mathematical Society.

TAUGHT PROGRAMMES

Financial Mathematics MSc

This cutting edge MSc programme will equip you with the mathematical, financial and computational skills needed to quantify and manage risk effectively in today's finance, investment and insurance industries.

The programme is also an excellent preparation for students wishing to embark upon research degree (PhD) in financial or actuarial mathematics, professionals looking to move from their current field into finance or for finance professionals who would like to take their careers to the next level.

Financial and Actuarial Mathematics MSc

This programme is supported by the University of Liverpool's prestigious Institute for Financial and Actuarial Mathematics. Therefore, as a student in London you will have access to this vibrant research community whilst studying within minutes of London's financial centre.

This cutting edge MSc programme is oriented towards you if you want to receive a high-profile education in quantitative finance and actuarial science. The MSc will equip you with the mathematical, financial and computational skills needed to quantify and manage risk effectively in today's finance, investment and insurance industries.

Mathematical Sciences MSc

This programme offers you the opportunity to specialise in a broad range of areas across pure and applied mathematics, probability and statistics, and theoretical physics. Advanced modules are available in areas including probability theory, algebra, asymptotic methods, geometry, mathematical biology, partial differential equations, quantum field theory, singularity theory, standard model and string theory and stochastic analysis.

RESEARCH OPPORTUNITIES

Postgraduate research opportunities are listed on page 101. Full details can be found at www.liverpool.ac.uk/study/postgraduate/courses/research

Contacting Mathematical Sciences

Mrs Shirley Farrell
T: +44 (0)151 794 4043
F: +44 (0)151 794 4061
E: s.a.farrell@liv.ac.uk
www.liverpool.ac.uk/mathematical-sciences

Medicine

Whether you want to develop a specialism or achieve your career goals, we have the answer with our wide choice of postgraduate programmes.



| Taught programmes | Mode of delivery | Campus | UK and EU fees | International fees |
|-----------------------------------|---|-----------------------------------|--|------------------------|
| Master of Public Health MPH | Full-time Part-time Full-time Flexible | Liverpool London Online | £6,800 £3,400 £8,100 Visit www.liverpool.ac.uk/study/online/ | £16,300 £18,150 |
| Medical Education MSc | Blended | Liverpool/ Online | £6,800 or CPD fee per module | £16,700 |
| Physician Associate Studies PGDip | Full-time | Liverpool* | N/A | N/A |

*Plus clinical placements across the North West.

For the very latest information on fees and scholarships, including Government loans and initiatives, visit www.liverpool.ac.uk/study/postgraduate/finance

Teaching excellence

The School's well-known for its innovative curriculum and high quality teaching and this was recognised when we were made a Centre for Excellence in Teaching and Learning. Here you'll gain the very latest knowledge and skills, under the guidance of academic staff who are all active researchers.

Focusing on your needs

Every professional has their own unique needs, so we take a flexible approach by blurring the boundaries between our taught programmes and continuous professional development courses. As a result you have the option to select CPD modules that are most relevant to your work and then compile these, with further study, into a master's qualification.

Innovative, flexible courses and programmes

Through our pioneering work both online and on campus, we offer a flexible range of well supported delivery modes to suit your needs, whether you are in currently in work or furthering your education directly from an undergraduate programme.

Medicine *(Continued)*

TAUGHT PROGRAMMES

Master of Public Health MPH

This programme is internationally respected for its multidisciplinary focus and commitment to the World Health Organization's (WHO) Health for All principles.

It is an essential programme if you are working in any area of public health: governmental organisations, health services management, policy and planning, housing, transport, or for community groups and non-governmental organisations (NGOs). Our students are medics, doctors, nurses, occupational therapists, pharmacists, environmental health officers and other professionals from various sectors of public health.

With its modular format and open learning facilities the programme can be studied to Postgraduate Certificate (PGCert), Postgraduate Diploma (PGDip) or master's levels at either the University's Liverpool or London Campuses. You can also study with other institutions by using the Credit Accumulation and Transfer Scheme (CATS).

The MPH provides a solid foundation for public health research and practice in a variety of public, NGO, and international settings.

You can opt to study full-time over one year, part-time over two to six years or integrate the programme with your job as part of your continuing professional development.

Medical Education MSc

We have teamed up with the University's Centre for Life Long Learning to deliver a programme in professionally focused education which is informed by experience and the latest research in both education and healthcare education. You will leave this programme with a clear understanding of theory, but have also developed skills and experience in applying that theory to real and practical situations. The blended learning approach which we have adopted (even for the full-time programme) means that we draw on current real experiences in shaping the way in which we think about the challenges that are faced by anyone who is involved in healthcare professions education.

Online programmes

For more on our online taught programmes please see www.liverpool.ac.uk/study/online. Please note that in some cases the content of our online and on-campus programmes differ.

Physician Associate Studies PGDip

This full-time, two-year Postgraduate Diploma in Physician Associate Studies offers a unique opportunity for you to join an exciting new profession in healthcare.

The Physician Associate is a rapidly expanding role in healthcare in the UK. Working alongside doctors and other healthcare professionals in hospitals and primary care settings, you will support them in the diagnosis and management of patients

The programme is supported by Health Education North West (HENW) and is offered as a partnership between the University, HENW and NHS partners. As a funded programme it has no tuition fees. You will receive generous financial support while you're studying and will be prepared to apply for a Band 7 'Agenda for Change' position on successful completion of the course.

RESEARCH OPPORTUNITIES

Postgraduate research opportunities offered within the Faculty of Health and Life Sciences are listed on page 101. Full details can be found at www.liverpool.ac.uk/study/postgraduate/courses/research

Contacting Medicine

Mr Tom Green
T: +44 (0)151 794 8255
E: mph@liverpool.ac.uk
Mrs Lynn Jones
T: +44 (0)151 794 5780
E: joneslk@liverpool.ac.uk
www.liverpool.ac.uk/medicine



Modern Languages and Cultures

In the Research Assessment Exercise 2014, we were ranked in the top 50% for 4* and 3* research with 90% of our environment at 4* and 3* (world leading and internationally excellent).

| Taught programmes | Mode of delivery | Campus | UK and EU fees | International fees |
|-----------------------------|------------------------|-----------|------------------|--------------------|
| Latin American Studies MRes | Full-time Part-time | Liverpool | £4,121 £2,060 | £14,100 |
| Modern Languages MRes | Full-time Part-time | Liverpool | £4,121 £2,060 | £14,100 |

Please note that the fees shown for the MRes programmes are for entry 2016 and will rise for entry 2017.

For the very latest information on fees and scholarships, including Government loans and initiatives, visit www.liverpool.ac.uk/study/postgraduate/finance

Exciting research master's programmes

Our MRes programmes provide a personalised and focused introduction to postgraduate research, allowing you to develop as an independent researcher with the support of an expert in that area.

You will achieve a rigorous overview of the current state of scholarship in your selected field. This will guide you through a programme of directed, individualised reading to the selection and completion of a substantial research project.

Scholarly journals

We are home to four scholarly journals: Catalan Review, Bulletin of Hispanic Studies, Bulletin of Latin American Research and Migrations and Identities.

We also participate in Modern Languages Open, a new open access publishing platform at Liverpool University Press.

MRES PROGRAMMES Latin American Studies MRes

This programme provides a personalised and focused introduction to postgraduate research, allowing you to develop as an independent researcher with the support of an expert in Latin American Studies. Our research is characterised by our wide-ranging interest in the national and global dimensions of Latin American Studies, including a focus on the cultures, politics and societies of Brazil, Mexico, Chile, Argentina, Colombia, Andean countries and Central America.

Our work places us at the cutting edge of fields such as colonial and post-colonial studies (including slavery studies), politics and international relations, cyber-culture and digital transformations, and world cinema. Our staff are fully engaged with the development of Latin American Studies nationally, many playing leading roles in academic publishing, subject associations, and on behalf of major funding bodies.

Modern Languages MRes

Our research is characterised by our wide-ranging interests in the national and global dimensions of language-based study, including a focus on China, France, Germany, Italy and the countries of the Iberian Peninsula as well as Sinophone, Francophone, Hispanophone and Lusophone cultures and societies outside Europe.

Within Modern Languages, we offer pathways in:

- Basque Studies
- Catalan Studies
- Chinese Studies
- Film Studies
- French Studies
- German Studies
- Hispanic Studies
- Italian Studies
- Portuguese Studies
- Spanish Studies.

Full details of the MRes programmes can be found at www.liverpool.ac.uk/study/postgraduate

RESEARCH OPPORTUNITIES

Postgraduate research opportunities are listed on page 100. Full details can be found at www.liverpool.ac.uk/study/postgraduate/courses/research

Contacting Modern Languages and Cultures

E: hlcvent@liverpool.ac.uk
www.liverpool.ac.uk/modern-languages-and-cultures

Music

 LIVERPOOL
PHILHARMONIC



In the latest Research Excellence Framework 2014, we increased the proportion of 4* research from 10% (in the RAE 2008) to 32%, with 40% of impact rated 4* (outstanding) and 50% of environment rated 4* (world-leading).

TAUGHT PROGRAMMES

Arts MRes

The Arts MRes allows you to undertake a research project in one or more of the School of the Arts' key subject areas: Architecture, Communications and Media, English, Music and Philosophy. You will receive training in research skills and supervision from one or more academic specialists in their subject area(s).

The programme provides excellent preparation for you if you're intending to undertake a PhD in the Arts and Humanities, but is also a good choice if you wish to pursue a research project for purposes of professional development or personal interest.

Music MMus

Our MMus allows you to focus on instrumental study and finely-tune your skills with an academic approach to musical performance, practice, pedagogy and historical performance. The programme gives you a critical and analytical understanding of issues pertaining to the production of musical performances to a standard exceeding that of BMus, whether you are from a university or conservatoire environment.

Music Industries MA

This MA will give you an advanced and discerning knowledge of music industry practices, drawing on our international research and the experience of our tutors. On the programme you'll investigate current music industry practices in-depth.

RESEARCH OPPORTUNITIES

Postgraduate research opportunities are listed on page 100. Full details can be found at www.liverpool.ac.uk/study/postgraduate/courses/research

Contacting Music

Taught programmes

T: +44 (0)151 795 0500

E: sscarts@liverpool.ac.uk

Research programmes

E: pgarts@liverpool.ac.uk

www.liverpool.ac.uk/music

Taught programmes

Mode of delivery

Campus

UK and EU fees

International fees

Arts MRes

Full-time
Part-time

Liverpool

£4,121
£2,060

£14,100

Music MMus

Full-time
Part-time

Liverpool

£5,700
£2,850

£13,000

Music Industries MA

Full-time
Part-time

Liverpool

£5,700
£2,850

£13,000

Please note that the fees shown for the MRes programmes are for entry 2016 and will rise for entry 2017.

For the very latest information on fees and scholarships, including Government loans and initiatives, visit www.liverpool.ac.uk/study/postgraduate/finance

Exciting postgraduate community

We're at the forefront of research and postgraduate teaching. Our Institute of Popular Music (IPM) was the first academic centre created specifically to study popular music – and where better than in the home of the Beatles? It also boasts an enviable archive of donated recorded material.

Guest speakers and collaborations

As a postgraduate student you'll be able to attend research seminars involving guest speakers from many disciplines and sub-disciplines. You'll also be closely involved in classical, traditional and popular music concerts performed by professional musicians and students. Composer Kenneth Hesketh and conductor Vasily Petrenko from the Royal Liverpool Philharmonic – neighbours with whom we have launched a partnership – have recently been made honorary professors of Music at Liverpool.

Ocean Sciences

Ocean Sciences is engaged in fundamental and applied research and is highly successful in attracting staff who are leaders in their fields, and funding for both research and teaching.

| Taught programmes | Mode of delivery | Campus | UK and EU fees | International fees |
|---|------------------|-----------|--|---|
| Sea Level: From Coast to Global Ocean MSc | Full-time | Liverpool | £6,700 (including Research Support Fees) | £17,500 (including Research Support Fees) |
| | Part-time | | £3,350 | |

For the very latest information on fees and scholarships, including Government loans and initiatives, visit www.liverpool.ac.uk/study/postgraduate/finance

Located alongside the National Oceanography Centre (NOC)

We work alongside Scientists at the NOC, to deliver our MSc, who are world leaders in the science of sea level, both in the context of global and regional sea level changes in response to a changing climate and in the science of forecasting coastal flooding as a result of tide and storm interaction.

TAUGHT PROGRAMMES

Sea Level: From Coast to Global Ocean MSc

The aim of this programme is to provide a grounding in both practical and theoretical aspects of sea level science in the context of climate change. Within Liverpool we are well placed to develop high-level training in sea level because of the co-location of the NOC and the School of Environmental Sciences.

For full details of all the modules on offer consult the School of Environmental Sciences Postgraduate Brochure 2017, available on request, or visit www.liverpool.ac.uk/study/postgraduate/courses/taught

RESEARCH OPPORTUNITIES

Postgraduate research opportunities are listed on page 101. Full details can be found at www.liverpool.ac.uk/study/postgraduate/courses/research

Contacting Ocean Sciences

T: +44 (0)151 794 3125

E: soesresearch@liverpool.ac.uk

www.liverpool.ac.uk/oceansciences



Philosophy

In the Department of Philosophy you will be taught by internationally recognised philosophers with research expertise that spans philosophy's breadth and history.

Art, Aesthetics and Cultural Institutions MA

This exciting interdisciplinary master's programme combines philosophy, history of art and museum studies as well as theory with practice. It is specifically designed to equip you with the competence and understanding to pursue either a doctorate programme in the Arts and Humanities, or a professional career in the cultural sector. In addition to traditionally taught modules, you will also benefit from research-led teaching and support with learner-directed independent projects, including the opportunity to take three-month studentships with Tate Liverpool and FACT, exclusively offered to our students. Professional skills and networking are developed through a 10-day placement with one of our cultural partners, which include: Tate Liverpool, FACT, National Museums Liverpool, the Bluecoat, METAL, Open Eye Gallery, Unity Theatre, the National Trust and many other leading institutions in Liverpool and the North West.

Philosophy MA

This programme gives you access to the very wide range of philosophical topics and expertise available in the Department. It's great preparation for Philosophy research, as well as an attractive postgraduate course. Our research is delivered primarily through three research groups: Metaphysics, Language and Mind; Religion, Ethics and Practical Philosophy; and Aesthetics, Art and Literature.

RESEARCH OPPORTUNITIES

Postgraduate research opportunities are listed on page 100. Full details can be found at www.liverpool.ac.uk/study/postgraduate/courses/research

Contacting Philosophy

Taught programmes

T: +44 (0)151 795 0500

E: sscarts@liverpool.ac.uk

Research programmes

E: pgarts@liverpool.ac.uk

www.liverpool.ac.uk/philosophy

Taught programmes

Mode of delivery

Campus

UK and EU fees

International fees

Arts MRes

Full-time
Part-time

Liverpool

£4,121
£2,060

£14,100

Art, Aesthetics and Cultural Institutions MA

Full-time
Part-time

Liverpool

£5,700
£2,850

£13,000

Philosophy MA

Full-time
Part-time

Liverpool

£5,700
£2,850

£13,000

Please note that the fees shown for the MRes programmes are for entry 2016 and will rise for entry 2017.

For the very latest information on fees and scholarships, including Government loans and initiatives, visit www.liverpool.ac.uk/study/postgraduate/finance

Experience the full breadth of our academics' expertise

Members of the Department are actively researching and publishing in a variety of fields with national and international reputations. This research activity underpins all our taught courses, and students benefit from the expertise and enthusiasm of staff for their subject. We are proud of the breadth of our research, which includes Ancient Philosophy, Environmental Philosophy, Metaphysics, Philosophy of Language, Philosophy of Mind, Philosophy of Religion, Ethics, Political Philosophy, Aesthetics, Philosophy of Art, Philosophy of Literature, Indian Philosophy, Logic, Modern French Philosophy, and Neo-platonism.

Be part of a city with a reputation for philosophical thought

Philosophy comes alive in Liverpool and we have a tradition of active engagement with the wider life of our city.

You will be able to get involved in many activities. Philosophy in the City is one such project. Run in collaboration with organisations including Liverpool Biennial, this links the Department to communities, culture, and learning in the region www.liverpool.ac.uk/philosophy/research/philosophy-in-the-city/

TAUGHT PROGRAMMES

Arts MRes

The Arts MRes allows you to undertake a research project in one or more of the School of the Arts' key subject areas: Architecture, Communications and Media, English, Music and Philosophy. You will receive training in research skills and supervision from one or more academic specialists in their subject area(s).

The programme provides excellent preparation for you if you're intending to undertake a PhD in the Arts and Humanities, but is also a good choice if you wish to pursue a research project for purposes of professional development or personal interest.

Physics



We are a world leader in Physics research. Our scientists work in research centres across four continents as well as carrying out research closer to home.

| Taught programmes | Mode of delivery | Campus | UK and EU fees | International fees |
|---|------------------------|--|--|--------------------|
| Nuclear Science and Technology MSc | Full-time Part-time | Various – see programme description below. | Fee set externally Visit www.ntec.ac.uk/fees.html | |
| Radiometrics: Instrumentation and Modelling MSc | Full-time Part-time | Liverpool | £6,500 £3,250 | £18,300 |

For the very latest information on fees and scholarships, including Government loans and initiatives, visit www.liverpool.ac.uk/study/postgraduate/finance

Our research activities

Our resources include the Liverpool Semiconductor Detector Centre, the Radiation Detector Laboratory, the Cockcroft Accelerator Science Institute, and the Stephenson Institute for Renewable Energy.

We are engaged in frontier research, including the Large Hadron Collider in CERN, Switzerland, ALICE, ARGONNE, DIAMOND, ESRF, GANIL, GSI, Jyväskylä and TRIUMF.

Centres for Doctoral Training

The University of Liverpool has been awarded significant funding as part of a government investment in postgraduate training. As one of only 24 UK Universities to be involved in setting up prestigious Centres for Doctoral Training (CDT), the University of Liverpool is collaborating in the following CDTs:

- Next Generation Nuclear
- New and Sustainable Photovoltaics
- Fusion Energy.

Learn in our award-winning facilities

Our facilities are second to none, in particular our £23 million state-of-the-art Central Teaching Laboratories have transformed the way in which Physical Sciences are taught at the University.

TAUGHT PROGRAMMES

Nuclear Science and Technology MSc

This programme is part of a new concept in postgraduate level training for the nuclear sector developed by a strong consortium of UK universities and HE institutions called the Nuclear Technology Education Consortium (NTEC). Together these institutions represent more than 90% of the nuclear postgraduate teaching expertise residing in the UK's universities and research institutes. NTEC thus provides a one-stop shop for a range of postgraduate training in Nuclear Science and Technology which is unparalleled in the UK.

The breadth and format of the training is designed to meet the UK's projected nuclear skills requirements in decommissioning and clean-up, reactor technology, fusion and nuclear medicine. Modules are generally delivered on the campus of the providing institution. Therefore you can register with the University of Liverpool and visit other members of the consortium to attend their selected modules. The NTEC MSc is accredited by the Institution of Engineering and Technology (IET), the Energy Institute (EI) and the Institute of Materials, Minerals and Mining (IoM3). The NTEC programme is also the first nuclear Master's to be endorsed by the Nuclear Institute (NI). For full details visit www.ntec.ac.uk/

Radiometrics: Instrumentation and Modelling MSc

This one-year full-time taught MSc programme (or up to six years part-time) will prepare you for a career in any industry involving radiation and radiation detectors. We cover basic radiation principles, the use of detection systems and associated instrumentation applications, and modelling. There's a strong focus on practicals and laboratory-based techniques. You'll be able to carry out a project, often in industry, making you even more employable in sectors such as nuclear power, medicine, environmental protection, oil and mining, and health and safety.

RESEARCH OPPORTUNITIES

Postgraduate Research opportunities are listed on page 101. Full details can be found at www.liverpool.ac.uk/study/postgraduate/courses/research

Contacting Physics

Mrs Marj Robson

T: +44 (0)151 794 3370

E: m.robson@liverpool.ac.uk

www.liverpool.ac.uk/physics

Planning

As the world's first planning school, established in 1909, Planning at Liverpool offers you quality professional education within a setting renowned for its innovative, influential research and scholarship.

Be at the forefront of the discipline through research-led teaching

Planning is one of the four subject disciplines within the School of Environmental Sciences and specialises in the planning of cities and regions. Our teaching is led by our research, which is focused on the topics of Spatial Planning and Impact Assessment. This means that you will benefit from working with staff who are experts within their fields, and up to date with the latest knowledge and innovations.

This is reflected in the fact that we edit two leading international journals, Town Planning Review and the Journal of Environmental Assessment Policy and Management. Specifically, our research is organised around the three world-leading research centres which we run:

- The Environmental Assessment and Management Research Centre
- The Centre for Sustainable and Resilient Cities
- Liverpool Institute for Coasts and Oceans.

Funding bodies of our research have included the European Commission, ESPON, ESRC/NERC/EPSC, Department of Communities and Local Government, North West Regional Assembly, British Academy, Countryside Agency, English Nature, a Welsh Consortium of Governments and others.



Taught programmes

Mode of delivery

Campus

UK and EU fees

International fees

Environmental Assessment and Management MSc

Full-time
Part-time

Liverpool

£6,000
£3,000

£13,950

Geographic Data Science MSc*

Full-time

Liverpool

£5,300

£13,000

Marine Planning and Management MSc

Full-time
Part-time

Liverpool

£6,000
£3,000

£13,950

Town and Regional Planning MCD

Full-time
Part-time

Liverpool

£6,500
£3,250

£13,950

Town and Regional Planning MA

Full-time
Part-time

Liverpool

£6,000
£3,000

£13,950

Urban Design and Property Development MSc

Full-time

London

£10,000

£18,400

Urban Planning MSc

Full-time

London

£10,000

£18,400

Urban Regeneration and Management MSc

Full-time
Part-time

Liverpool

£6,000
£3,000

£13,950

*For more information on the Geographic Data Science MSc, see Geography on page 66.

For the very latest information on fees and scholarships, including Government loans and initiatives, visit www.liverpool.ac.uk/study/postgraduate/finance

TAUGHT PROGRAMMES

Environmental Assessment and Management MSc

On this programme you'll develop advanced environmental planning and management skills. You'll also gain an understanding of the environmental implications of development action and of the wider social, political and economic issues surrounding decisions about the environment.

Marine Planning and Management MSc

This multidisciplinary programme is designed to equip you with the knowledge and skills required to take up the exciting job opportunities arising from recent changes to the planning system for UK marine areas. The programme bridges the gap between marine science and management and spatial planning, and equips you with the knowledge and skills needed to embark on a career within marine management, with a particular focus on the newly emerging practice of marine spatial planning.

Town and Regional Planning MCD

This programme is fully accredited by the Royal Town Planning Institute (RTPI) and will introduce you to the essential aspects of town and regional planning.

You'll learn about the social, economic and environmental challenges planners face, whilst becoming familiar with planning tools, methods and how they can be applied to particular planning contexts.

Three pathways are available to study, two of which have been tailored specifically to meet the needs of students who have completed an undergraduate degree in planning: Pathway B (Urban Design) and Pathway C (Spatial Modelling). Pathway A (Spatial Planning) is intended for students with an undergraduate degree in one of a range of disciplines related to planning, such as geography, sociology, environmental studies or politics; or for part-time students working in planning practice.



Town and Regional Planning MA

This taught programme is designed for you if you want to practise overseas and don't need a Royal Town Planning Institute (RTPI) accredited qualification. You'll not only gain a good understanding of town and regional planning but will also be able to tailor your studies to reflect your needs and interests, in consultation with the Programme Director. Three pathways are available to study: Pathway A (Spatial Planning), Pathway B (Urban Design) and Pathway C (Spatial Modelling).

Urban Design and Property Development MSc

This unique programme, one of the first of its kind in the UK, marries the related areas of property development and urban design. As a student, you will be engaged in exploring the dynamic connections between real estate valuation and the character of the built environment in one of the most rapidly changing property markets in the UK.

Taught at our London Campus, the location provides an ideal test bed for your studies; it is arguably the ideal city within which to study the production of the built environment from both an aesthetic and a commercial perspective.

Urban Planning MSc

This programme offers a unique combination of specialist study in urban planning, complemented by a range of optional modules in property development and design, and drawing upon our broad range of expertise in Urban Planning and Architecture. This programme is delivered at our London Campus.

Urban Regeneration and Management MSc

Through this programme you will develop an in-depth understanding of how cities around the world are dramatically increasing in size, scope and influence and why these transformations are occurring. You will explore the policies and practices that have been designed to manage the process of urban regeneration, renewal and transformation; policies and practices that try to address the issues of economic growth and competitiveness, ensuring that places are socially inclusive, the requirement that urban centres are resource efficient and interesting and distinctive places to be. It combines an understanding of contemporary policy with related skills in planning and management.

For details of all the modules on offer consult the School of Environmental Sciences Postgraduate Brochure 2017, available on request, or visit www.liverpool.ac.uk/study/postgraduate/courses/taught

RESEARCH OPPORTUNITIES

Postgraduate research opportunities offered by the School of Environmental Sciences are listed on page 101. Full details can be found at www.liverpool.ac.uk/study/postgraduate/courses/research

Contacting Planning

T: +44 (0)151 794 3125

E: soesresearch@liverpool.ac.uk

www.liverpool.ac.uk/planning

Politics

In the latest Research Excellence Framework 2014, 50% of our research impact was judged outstanding.



| Taught programmes | Mode of delivery | Campus | UK and EU fees | International fees |
|---|------------------------|-----------|------------------|--------------------|
| International Relations and Security MA | Full-time Part-time | Liverpool | £5,600 £2,800 | £12,750 |
| International Relations and Security MRes | Full-time Part-time | Liverpool | £4,121 £2,060 | £14,100 |

Please note that the fees shown for the MRes programmes are for entry 2016 and will rise for entry 2017.

For the very latest information on fees and scholarships, including Government loans and initiatives, visit www.liverpool.ac.uk/study/postgraduate/finance

Postgraduate community

We provide a friendly and encouraging atmosphere for students pursuing both taught and research programmes whilst maintaining high academic standards. We aim to facilitate productive dialogue between our postgraduate community and our staff and encourage a sense of common purpose.

High profile staff

Our staff have a high profile in the media, give evidence to select committees and work with a range of external bodies. As part of the School of Histories, Languages and Cultures and the University's wider research community, we bring an interdisciplinary focus to Politics, not least through our pioneering Europe and the World Centre which focuses on the relationships between Europe and other regions of the world.

TAUGHT PROGRAMMES

International Relations and Security MA/MRes

Along with fellow students from across the world, join contemporary global debates about the meaning of security, democracy and the role of political processes in international relations. The key characteristics of this programme are its flexibility and choice. You can pursue your own particular areas of interest through our optional pathways, which draw on the internationally recognised knowledge of our staff, experts on terrorism, international criminal actors, human trafficking, insurgency and private military and security companies. In a contracting job market and increasing competitiveness for the best jobs, this programme offers you a great opportunity to enhance your career prospects by learning about international relations, academic methods and contemporary security debates.

Our MRes programme involves more independent study than the MA and is often a route to a PhD. It provides a personalised and focused introduction to research allowing you to develop as an independent researcher with the support of an expert in that area.

RESEARCH OPPORTUNITIES

Postgraduate research opportunities are listed on page 100. Full details can be found at www.liverpool.ac.uk/study/postgraduate/courses/research

Contacting Politics

Taught enquiries
E: hlcevent@liverpool.ac.uk
www.liverpool.ac.uk/politics

Psychology

80% of our research is ranked 4* and 3* (world-leading and internationally excellent) with 100% of impact at outstanding or very considerable (REF 2014).

| Taught programmes | Mode of delivery | Campus | UK and EU fees | International fees |
|--|------------------|---------------------|--|--------------------|
| Doctor of Clinical Psychology DCLinPsy | Full-time | Liverpool | TBC | TBC |
| Investigative and Forensic Psychology MSc | Full-time | Liverpool | £7,600 | £16,350 |
| Mental Health Psychology MSc | Flexible | Online | Visit www.liverpool.ac.uk/study/online/ | |
| Organisational and Business Psychology MSc | Flexible | Online | Visit www.liverpool.ac.uk/study/online/ | |
| Psychology MSc | Flexible | Online | Visit www.liverpool.ac.uk/study/online/ | |
| Reading for Life MSc | Part-time | Liverpool London | TBC | TBC |
| Research Methods in Psychology MSc | Full-time | Liverpool | £6,800 | £16,350 |

For the very latest information on fees and scholarships, including Government loans and initiatives, visit www.liverpool.ac.uk/study/postgraduate/finance

TAUGHT PROGRAMMES

Doctor of Clinical Psychology DCLinPsy

Graduate from this programme and you'll be eligible for Chartered Clinical Psychologist status with the British Psychological Society, and for the registration with the Health and Care Professions Council, allowing you to practice as a Clinical Psychologist in the UK.

The programme provides a theoretical introduction to a wide range of clinical problems and approaches, together with basic clinical skills and a variety of practical experiences. There are places for up to 24 trainees per year. This is a three-year, full-time programme offering clinical placements throughout the year in NHS Trust settings across the North West.

Investigative and Forensic Psychology MSc

Our Investigative and Forensic Psychology MSc has a 20 year history; we're the only Russell Group university running this type of course, demonstrating our research excellence. Additionally, we have one of Europe's largest team of law enforcement psychology researchers with specialisms that span across the legal system.

You'll benefit from a large number of high calibre external guest speakers giving you a great opportunity to understand how knowledge is applied in practice, to network and to gain experience in communicating with a variety of audiences.

The MSc Investigative and Forensic Psychology is a one-year, full-time postgraduate programme. It is accredited by the British Psychological Society and recognised as the first step towards status as a Chartered Forensic Psychologist in the UK for students who have Graduate Basis for Chartership.

Reading for Life MSc

The Reading for Life MSc, the first of its kind in the country, is concerned with the wider and deeper ways in which serious creative literature 'finds' people, emotionally and imaginatively, by offering living models and visions of human troubles and human possibilities. The programme is run part-time over two years at our Liverpool Campus and is available to be studied on a CPD basis at our London Campus.

Research Methods in Psychology MSc

This one-year full-time programme will give you the psychological knowledge and research skills needed to pursue doctoral level studies in psychology and to enhance your psychology career.

Academic staff within the Psychology Department, together with visiting speakers, teach a valuable set of modules in practical research skills such as project management, quantitative and qualitative research, and statistics.

Online programmes

For more information on our taught online programmes visit www.liverpool.ac.uk/study/online

RESEARCH OPPORTUNITIES

Postgraduate research opportunities offered within the Faculty of Health and Life Sciences are listed on page 101. Full details can be found at www.liverpool.ac.uk/study/postgraduate/courses/research

Contacting Psychology

General enquiries

E: psychmsc@liverpool.ac.uk

www.liverpool.ac.uk/psychology

Sociology, Social Policy and Criminology

We are committed to using social science as a critical, evidence-based discipline that inspires constructive suggestions for social reform. This shared pursuit of research-based knowledge in support of social justice sets this department apart from most of its contemporaries in the UK and beyond.



Internationally renowned

As one of the UK's leading centres of sociology, social policy and criminology for over a century, throughout our history we have influenced society with the novel research insights in fields such as crime, health, welfare, housing, inequality and the operation of political power – at local, national and global levels. Today we are internationally renowned for our research and have a dynamic community of academic staff and students who work together in a shared spirit of discovery.

Our work makes a tangible difference to society

Our research over the past five years has led to changes in criminal justice policy and procedure, changes in the way that public bodies are audited, and has led to the establishment of best practice in the evaluation of large-scale arts and cultural programmes.

| Taught programmes | Mode of delivery | Campus | UK and EU fees | International fees |
|--|------------------------|-----------|--|--------------------|
| Criminological Research MRes | Full-time Part-time | Liverpool | £4,121 £2,060 | £14,100 |
| Social Research MRes | Full-time Part-time | Liverpool | £4,121 £2,060 | £14,100 |
| Social Research Methods MA | Full-time Part-time | Liverpool | £5,700 £2,850 | £13,000 |
| Social Research Methods (CPD 5 credit modules) | Part-time | Liverpool | Visit www.liverpool.ac.uk/sociology-social-policy-and-criminology/postgraduate-taught | |

Please note that the fees shown for the MRes programmes are for entry 2016 and will rise for entry 2017.

For the very latest information on fees and scholarships, including Government loans and initiatives, visit www.liverpool.ac.uk/study/postgraduate/finance

TAUGHT PROGRAMMES

Criminological Research MRes

This programme provides an excellent research training opportunity with advanced theoretical and practical training in postgraduate level research. Criminology research skills are developed at an advanced level. Students are introduced to ethical issues involved in conducting criminological research alongside skills training in qualitative and quantitative research methods and data analysis.

You will undertake a substantial research project which offers valuable experience whether you're preparing for a career or looking for continuous professional development.

Social Research MRes

This advanced course of study is designed to prepare you to successfully undertake postgraduate study at MPhil and PhD level, or to become an independent/career social researcher. You will undertake a substantial research project which offers valuable experience whether you're preparing for a career or looking for continuous professional development in sociology, social policy and criminology.

Emphasis is on research, supported by qualitative and quantitative data analysis and presentation. Practical skills are developed through task-based activity.

Social Research Methods MA

This programme is designed to prepare you to successfully undertake postgraduate study at MPhil and PhD level, or to become an independent/career social researcher.

It has Economic and Social Research Council 1+3 Recognition status and has been specifically constructed for you if you intend to undertake professional and/or academic research in sociology, social policy and criminology. It provides an excellent broad-based practical grounding in research techniques. You are introduced to the principles of research design and strategy, as well as qualitative and quantitative data-analysis and presentation. Practical skills are developed through task-based activity.

Social Research Methods

CPD 5 credit modules

These short 5-credit specialised methods and training modules in social sciences enable you to study alongside work and gain credits which can be used to gain a Professional Award (30 credits), Professional Certificate (60 credits), Professional Diploma (120 credits) or build towards an MA in Social Research Methods. Full details can be found at www.liverpool.ac.uk/sociology-social-policy-and-criminology/postgraduate-taught

RESEARCH OPPORTUNITIES

Postgraduate research opportunities are listed on page 100. Full details can be found at www.liverpool.ac.uk/study/postgraduate/courses/research

Contacting Sociology, Social Policy and Criminology

Taught programmes

E: slsjenq@liverpool.ac.uk

Research programmes

E: slsjpgr@liverpool.ac.uk

www.liverpool.ac.uk/sociology-social-policy-and-criminology



Veterinary Science

We will help you embrace new veterinary skills and opportunities through high quality postgraduate education.

| Taught programmes | Mode of delivery | Campus | UK and EU fees | International fees |
|--|------------------|-------------------|---|--|
| Bovine Reproduction DBR | Part-time | Liverpool/ Online | £3,250 per year, plus a £1,085 bench fee per year | £8,100, plus a £1,085 bench fee per year |
| Veterinary Business Management PGCert | Part-time | Online | CPD fee. Visit www.liverpool.ac.uk/vets/cpd | |
| Veterinary Physiotherapy MSc/PGDip | Part-time | Online | CPD fee. Visit www.liverpool.ac.uk/vets/cpd | |
| Veterinary Professional Studies MSc/PGDip/PGCert | Part-time | Online | CPD fee. Visit www.liverpool.ac.uk/vets/cpd | |

For the very latest information on fees and scholarships, including Government loans and initiatives, visit www.liverpool.ac.uk/study/postgraduate/finance

You'd be joining a school that pursues extensive research and has two leading referral hospitals for small animals and horses. Our hospitals, together with our veterinary practices and University-owned farms, are where theory and practice constantly advance together, to the benefit of our students and patients. We have five postgraduate programmes available within the School, four of which are delivered wholly online, designed for practising veterinary surgeons, physiotherapists or practice management staff.

TAUGHT PROGRAMMES

Bovine Reproduction DBR

For vets working primarily with cattle we've developed a two-year, part-time MSc in Veterinary Reproduction/Diploma in Bovine Reproduction (DBR), with access to our state-of-the-art farms and internationally renowned speakers from across the world speaking on their specialist areas of cattle reproduction.

Veterinary Business Management PGCert

For veterinary surgeons and practice managers with a serious interest in veterinary business, we have a Postgraduate Certificate in Veterinary Business Management which is another of our wholly online offerings and is a part-time programme studied over 2 years (maximum 3 years).

Veterinary Physiotherapy MSc/PGDip

For registered (chartered) physiotherapists we have a clinical Postgraduate Diploma and MSc in Veterinary Physiotherapy. This programme is designed to be completed part-time by practising chartered physiotherapists in the UK and their contemporaries abroad, with all modules available wholly online, supplemented by intensive practical weeks at our Leahurst Campus. The programme is recognised by the Association of Chartered Physiotherapists in Animal Therapy (ACPAT) as an upgrading route for 'Category A' membership.

Veterinary Professional Studies MSc/PGDip/PGCert

Our clinical taught programme, Veterinary Professional Studies, caters for small animal, equine or farm animal veterinarians. There are three degree levels – a Postgraduate Certificate, Postgraduate Diploma and MSc, all designed to be completed part-time by practising veterinary surgeons from anywhere in the world. All modules are available wholly online and are supplemented by practical workshops at our campus if required.

RESEARCH OPPORTUNITIES

Postgraduate research opportunities offered within the Faculty of Health and Life Sciences are listed on page 101. Full details can be found at www.liverpool.ac.uk/study/postgraduate/courses/research

Contacting Veterinary Science

Bovine Reproduction DBR

E: dbr@liverpool.ac.uk

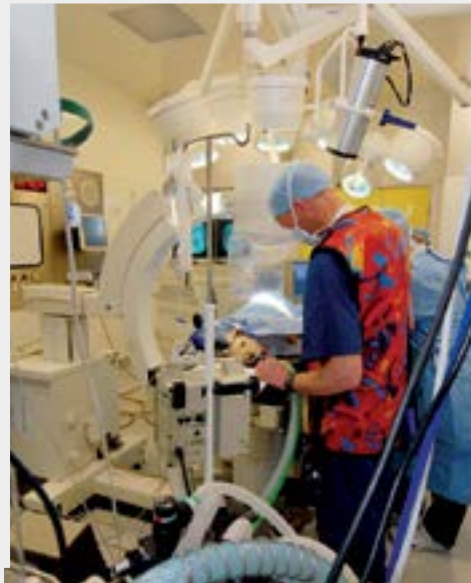
Veterinary Business Management PGCert, Veterinary Physiotherapy MSc and Veterinary Professional Studies MSc/PGDip/PGCert

E: pgtvets@liverpool.ac.uk

Veterinary Science MSc

E: vetpg@liverpool.ac.uk

www.liverpool.ac.uk/veterinary-science



Postgraduate research *at the University of Liverpool*

The University attracts the best and brightest early career researchers as we understand how important a supportive environment is for them to flourish and develop into leaders in their chosen field.

We offer innovative programmes, support systems and training alongside mentoring schemes, placement and networking opportunities and workshops to help our students successfully establish themselves as independent researchers. It's no wonder HEFCE ranked University of Liverpool 5th in the UK for its PhD completion rates.

Liverpool Doctoral College

The Liverpool Doctoral College is the home for all doctoral training and development across the University of Liverpool.

From the moment our PGR students join us they are welcomed into our community and encouraged to become active members of the Liverpool Doctoral College.

We support all postgraduate researchers undertaking their doctoral programme with our dedicated team of esteemed supervisors, professional services staff and student peers ensuring our students succeed in their studies.

We offer an innovative range of doctoral training opportunities across the three University faculties: Health and Life Sciences, Humanities and Social Sciences and Science and Engineering with excellent links to external partners as part of a supportive and vibrant academic environment.

Types of research programme

The Liverpool Doctoral College offers the following postgraduate research programmes:

Doctor in Philosophy (PhD) a research programme that normally takes three to four years to complete full-time and four to seven years part-time. You will conceptualise, design, and implement a substantial research project that results in new knowledge, applications, or understanding in a chosen field of study. The challenging nature of doctoral research is a reason that candidates develop qualities and transferable skills of much benefit to employment within and outside academia.

Master of Philosophy (MPhil) completed within one or two years full-time, the MPhil programme follows the same format as a PhD but is undertaken at master's level. The MPhil award can be taken in its own right or, following satisfactory progress being made, can be used to progress onto a PhD degree.

Doctor of Medicine (MD) the doctoral degree specifically available to graduates in Medicine, equivalent in requirements and format to the PhD but completed part-time within two to six years of registration.

Master of Research (MRes) the University also offers MRes programmes or 'research master's'. These one-year full-time programmes involve more independent study than a taught programme and are often a route to a PhD.

Our MRes programmes provide a personalised and focused introduction to postgraduate research allowing you to develop as an independent researcher with the support of an expert in that area. Available MRes programmes are listed in both the taught and research sections of this prospectus, but full details can be found at www.liverpool.ac.uk/study/postgraduate

How to find and apply for a postgraduate research programme

Self-funded opportunities

Our self-funded opportunities are listed on pages 100 and 101. To explore these opportunities further visit www.liverpool.ac.uk/study/postgraduate/courses/research where you will find details on research interests and specialisms and the fees associated with your studies. You should note that this list of research opportunities isn't exhaustive and we encourage you to contact us if you have an interesting research proposal that links to our research specialisms and interests.

A range of scholarships awarded through annual competition are available to help eligible researchers meet funding costs and living expenses. Visit www.liverpool.ac.uk/study/postgraduate/finance/scholarships/ for more information.

Funded studentships and scholarships

You can join our research teams who have already secured funding to support your degree, including funding to cover fees and expenses. A range of scholarships are also available to help eligible researchers meet funding costs and living expenses.

There are numerous models of funded places, including:

- Doctoral training centres
- University studentships in priority research areas
- Large scale research programmes and projects involving teams working on specific research areas
- University studentships on collaborative degrees with leading institutions overseas
- Single studentships funded by our external partners and sponsors.

These opportunities are publicised through our job vacancy listings www.liverpool.ac.uk/working/jobvacancies/studentships/, and the research section of individual School and Department websites. These website addresses can be found on pages 100 and 101 alongside self-funded opportunities.

Our Doctoral Training Centres

The University leads 14 Doctoral Training Centres that are designed to give students the skills they need to address some of the world's toughest challenges – from climate change and energy to global health issues and social sciences.

Funded through various research councils, the centres enable postgraduate students to access a breadth of research across multiple institutions, helping to develop them into cutting-edge scientists who are capable of competing for the best jobs and research opportunities.

We also have Marie Curie Initial Training Networks and research student cohorts in major centres, such as the MRC Centre for Drug Safety Science, which brings together a critical mass of knowledge and technologies in order to advance understanding of adverse drug reactions.

Current opportunities

- ESRC North West Doctoral Training Centre
- EPSRC CDT in New and Sustainable Photovoltaics
- EPSRC and EPSRC CDT on Quantification and Management of Risk and Uncertainty in Complex Systems and Environments
- Wellcome Trust DTP in Cellular and Molecular Physiology
- NW England MRC Fellowship Scheme in Clinical Pharmacology and Therapeutics
- Newcastle-Liverpool-Durham BBSRC Doctoral Training Partnership (DTP)
- AHRC NW Consortium DTP
- NERC DTP in Adapting to the Challenges of a Changing Environment (ACCE)
- Manchester and Liverpool Doctoral Training Programme – Understanding the Earth, Atmosphere and Ocean
- EPSRC CDT in Fusion
- EPSRC CDT in Next Generation Nuclear
- EPSRC CDT in Additive Manufacturing
- Wellcome Trust Clinical 4-yr PhD Programme in Global Health
- Centre for Global Eco-Innovation.

Support for your development

Many of our doctoral students continue into academic careers. However, nearly half of UK doctoral graduates move into careers outside of higher education. We arm our postgraduate researchers with the skills and acumen to succeed in the 21st Century economy.

Design a personal development programme

Working with your academic supervisor and the University's dedicated PGR Development professionals, you will design a personal development programme. This will prepare you to be an effective researcher as well as providing you with the tools to build the knowledge, behaviours and attributes that employers demand.

Our professional partnerships ensure we can offer high-profile placements in international, national and local companies. We offer networking opportunities with industrial, public sector and charitable partners, alumni and fellow postgraduate research students beyond your discipline, to learn and share from real-life examples. Postgraduate researchers can also utilise training opportunities from within the University research community.

Skills for your professional development

Our in-house development programmes will develop the skills essential for your future via on-campus events and workshops, online options and self-selected activities. Our development aims link closely with those of VITAE, the dedicated organisation that works to realise the potential of researchers through transforming their professional and career development.

The PGR Development Programme also provides access to the PGR Toolbox, a bespoke online resource centre designed specifically for postgraduate researchers. The PGR Toolbox facilitates your development by providing relevant information and the space for you to record and reflect on your ongoing professional development throughout your research degree.

For more information, visit www.liverpool.ac.uk/pgr-development/

Everything you need to know about postgraduate research at Liverpool can be found on our Doctoral College website,
www.liverpool.ac.uk/doctoral-college

Self-funded postgraduate research opportunities

Applying for self funded opportunities:



Research programmes fees

For the 2016-2017 session, tuition fees for UK and EU postgraduate research students are:

MPhil/PhD Full-time £4,121 per year Part-time £1,236 per year

MRes Full-time £4,121 per year Part-time £2,060 per year

For the 2016-2017 session, tuition fees for international postgraduate research students are:

MPhil/PhD Full-time £14,100 per year (Arts based) Part-time £4,230 per year
Full-time £18,000 per year (Science based) Part-time £5,400 per year

MRes Full-time £14,100 per year (Arts based) Part-time £7,050 per year (Arts based)
Full-time £18,000 per year (Science based) Part-time £9,000 per year (Science based)

Fees will rise for entry 2017 based on government guidelines. Please note, some programmes may incur additional research support costs/bench fees. You will be notified of any such fees in your offer letter. For the very latest information on fees visit www.liverpool.ac.uk/study/postgraduate/finance

Faculty of Humanities and Social Sciences

School of The Arts

www.liverpool.ac.uk/arts/sota-research

- Architecture MPhil/PhD
- Arts MRes
- Communication and Media MPhil/PhD
- Creative Writing PhD

- English MPhil/PhD
- Music MRes/MPhil/PhD
- Philosophy MPhil/PhD

School of Histories Languages and Cultures

www.liverpool.ac.uk/histories-languages-and-cultures/postgraduate-research

- Archaeology MRes/MPhil/PhD
- Archives and Records Management MPhil/PhD

- Classics and Ancient History MRes/MPhil/PhD
- Egyptology MRes/MPhil/PhD
- Film Studies MPhil/PhD
- French PhD
- German PhD
- Hispanic Studies PhD
- History MRes/MPhil/PhD
- Irish Studies MPhil/PhD
- Italian MPhil/PhD
- Latin American Studies PhD
- Modern Languages MRes
- Palaeoanthropology MRes
- Politics MPhil/PhD

School of Law and Social Justice

www.liverpool.ac.uk/law-and-social-justice/research

- Criminological Research MRes
- Law MPhil/PhD
- LLM (By Research)
- Social Research MRes
- Sociology and Social Policy MPhil/PhD

Management School

www.liverpool.ac.uk/management/postgraduate-research

- Economics and Finance PhD
- Management MRes/PhD

Faculty of Science and Engineering

School of Environmental Sciences

www.liverpool.ac.uk/environmental-sciences/research

- Civic Design MPhil/PhD
- Conservation and Resource Management MRes
- Earth and Ocean Sciences MPhil/PhD
- Ecology MPhil/PhD
- Geography MPhil/PhD

School of Engineering

www.liverpool.ac.uk/engineering/research

- Biomedical Engineering MPhil/PhD
- Computational Fluid Dynamics MPhil/PhD
- Engineering MPhil/PhD
- Flight Simulation and Technology Engineering MPhil/PhD
- Fluids Engineering MPhil/PhD
- Manufacturing MPhil/PhD
- Maritime Engineering MPhil/PhD
- Risk and Uncertainty in Engineering MRes/PhD
- Vibration and Control MPhil/PhD

School of Electrical Engineering Electronics and Computer Science

www.liverpool.ac.uk/electrical-engineering-electronics-and-computer-science/research

- Computer Science MPhil/PhD
- Electrical Engineering and Electronics MPhil/PhD

School of Physical Sciences

www.liverpool.ac.uk/physical-sciences/research

- Chemistry MPhil/PhD
- Mathematical Sciences MPhil/PhD
- Physics MPhil/PhD

Faculty of Health and Life Sciences

Institute of Ageing and Chronic Disease

www.liverpool.ac.uk/ageing-and-chronic-disease

- Clinical Sciences MRes
- Eye and Vision Sciences MPhil/PhD/MD
- Musculoskeletal Ageing MRes

- Musculoskeletal Biology (Medicine) MPhil/PhD/MD
- Musculoskeletal Biology (Veterinary) MPhil/PhD/MD
- Obesity and Endocrinology (Medicine) MPhil/PhD/MD
- Obesity and Endocrinology (Veterinary) MPhil/PhD/MD

Institute of Integrative Biology

www.liverpool.ac.uk/integrative-biology

- Advanced Biological Sciences MRes
- Biological Sciences (Biochemistry) MPhil/PhD
- Biological Sciences (Evolution, Ecology and Behaviour) MPhil/PhD
- Biological Sciences (Functional and Comparative Genomics) MPhil/PhD
- Biological Sciences (Plant Sciences) MPhil/PhD
- Biological Sciences (Structural and Chemical Biology) MPhil/PhD

Institute of Infection and Global Health

www.liverpool.ac.uk/infection-and-global-health

- Critical Care MPhil/PhD/MD
- Dental Microbiology MPhil/PhD/MD
- Epidemiology and Population Health MPhil/PhD
- Epidemiology MPhil/PhD
- Food Security MPhil/PhD
- Gastrointestinal Diseases MPhil/PhD/MD
- Global Health MPhil/PhD/MD
- Immunology MPhil/PhD/MD
- Infection and Global Health (Medical) MPhil/PhD/MD
- Infection and Global Health (Veterinary) MPhil/PhD
- Infection and Immunity MPhil/PhD/MD
- Infectious Diseases MPhil/PhD/MD
- Medical Microbiology MPhil/PhD/MD
- Medical Parasitology MPhil/PhD/MD
- Neurological Science MPhil/PhD/MD
- One Health (Medical) MPhil/PhD/MD
- One Health (Veterinary) MPhil/PhD
- Respiratory Diseases MPhil/PhD/MD
- Veterinary Epidemiology MPhil/PhD
- Veterinary Immunology MPhil/PhD

- Veterinary Microbiology MPhil/PhD
- Veterinary Parasitology MPhil/MD
- Veterinary Pathology MPhil/PhD
- Veterinary Virology MPhil/PhD
- Virology MPhil/PhD/MD

Institute of Psychology Health and Society

www.liverpool.ac.uk/psychology-health-and-society

- Clinical Psychology MPhil/PhD
- Health Services Research MPhil/PhD/MD
- Medical Education MPhil/PhD/MD
- Nursing MPhil/PhD
- Primary Care MPhil/PhD/MD
- Psychiatry MPhil/PhD/MD
- Psychology MPhil/PhD
- Public Health MPhil/PhD/MD

Institute of Translational Medicine

www.liverpool.ac.uk/translational-medicine/

- Biomedical Sciences and Translational Medicine MRes
- Biostatistics MPhil/PhD/MD
- Cancer Biology MPhil/PhD/MD
- Cancer Medicine MPhil/PhD/MD
- Cellular and Molecular Physiology MPhil/PhD/MD
- Child Health MPhil/PhD/MD
- Gastroenterology MPhil/PhD/MD
- Haematology and Leukaemia MPhil/PhD/MD
- Medical Imaging MPhil/PhD/MD
- Ocular Oncology MPhil/PhD/MD
- Orthopaedic Biology MPhil/PhD/MD
- Palliative Care MPhil/PhD/MD
- Pancreatology MPhil/PhD/MD
- Pathology MPhil/PhD/MD
- Perinatal and Reproductive Medicine PhD/MPhil/MD
- Pharmacology MPhil/PhD/MD
- Radiotherapy MPhil/PhD/MD
- Surgery and Oncology MPhil/PhD/MD
- Women's Health MPhil/PhD/MD

You should note that this list of research opportunities isn't exhaustive and we encourage you to contact us if you have an interesting research proposal that links to our research specialisms and interests.

How to apply

Our Admissions Team will send you an acknowledgement email within 24 hours of processing your application and are available to answer your questions throughout the application process.

The Admissions Team is part of the External Relations, Marketing and Communications department, which provides a link between the University and potential students. Members of the Team process applications and deal with enquiries from potential students. If you have any queries about postgraduate study at the University of Liverpool, you may either use our online 'ask' facility or contact us at the address shown on page 103.

Making an application for postgraduate study

For both postgraduate taught and research programmes, the easiest way to make an application is online.

Go to www.liverpool.ac.uk/study/postgraduate/applying/online.htm

If you are unable to apply online, you can apply by downloading a copy of the relevant Postgraduate Application Form from the University's website at www.liverpool.ac.uk/study/postgraduate/applying/offline and returning it to us by post or email.

All applications

When you have completed the application form you should either submit it online, email it or send it to the address below together with hard copies or scans of the following supporting documentation:

- School or college transcripts/certificates
- University transcripts
- Degree certificates
- Evidence of English language proficiency (international/EU applicants only)
- Personal statement
- Two references.

NB: We would advise that photocopies and scanned documents are acceptable at application stage. However, originals will be required should your application be successful.

International postgraduate taught applicants

The University operates a fee deposit scheme. Under this scheme postgraduate international students who accept an unconditional offer are required to pay a fee deposit of £1,000. The introduction of the fee deposit initiative brings us into line with many other UK universities who already operate this requirement.

After you inform us that you have accepted your offer to study at the University of Liverpool you will receive an email from the University's approved payment provider, Flywire.

Once we have received payment of your fee deposit your Confirmation of Acceptance for Studies (CAS) will be issued as a priority. A CAS is an essential document if you are applying for a student visa through the UKVI Tier 4 Points Based System. For all programmes your full deposit amount will be deducted from your tuition fee when you register with us.

For more information visit www.liverpool.ac.uk/study/international/money-and-scholarships/fee-deposits/

Research applicants

Students applying for self-funded research degrees (MPhil/PhD/MD) should follow these steps:

- Check the research interests detailed on the relevant department's website to see if we can offer expert supervision in your chosen area of specialisation
- Prepare a brief research proposal to outline the research project you would like to undertake
- Submit a full application with all supporting documents, including a clear statement on how you intend to fund your research degree
- The Admissions Team will acknowledge receipt of your application and will pass it to the appropriate academic department(s) for consideration.

Graduate diploma applications

You can apply directly to Liverpool International College using the online application form at www.kic.org.uk/liverpool. Please note there is no application fee.

Admissions Policy

Full details of the admissions procedures operated by individual departments may be found in the departmental Postgraduate Admissions Policies, which are available on the University's website via www.liverpool.ac.uk/study/postgraduate/applying

Deadlines

Although the University does not have an official deadline by which postgraduate applications should be received, some individual departments do have deadlines. If you are in any doubt, please contact either the department concerned or the Admissions Team.

Representatives overseas

In some countries the University works with local representatives who can provide more information and help you with the application process. For further details, please visit www.liverpool.ac.uk/study/international/countries/

EU Referendum outcome

As you will be aware, the UK voted to leave the European Union on 23 June 2016. At the time of going to print we are unsure how this decision will affect our EU students.

We value our international student community. Every single student at the University contributes to our welcoming and diverse community and we will continue to take great pride in offering a truly international experience for all of our students.

As the country begins to move away from EU membership, we will endeavour to keep you as up-to-date as possible on any changes that may affect you.

For the latest information visit www.liverpool.ac.uk/europe/prospective-students

Admissions Team

The University of Liverpool
Foundation Building
Brownlow Hill
Liverpool L69 7ZX UK

T: +44 (0)151 794 5927
<http://ask.liv.ac.uk>

UK and EU applications

E: pguk@liverpool.ac.uk

International applications

E: pgint@liverpool.ac.uk

Terms and conditions

Every effort has been made to ensure that information contained within this prospectus is accurate at the time of going to press.

The University will use all reasonable endeavours to deliver programmes and other services in accordance with the descriptions set out. However, the University reserves the right to make variations to the contents, entrance requirements and methods of delivery, to discontinue programmes and to combine and merge programmes, if such action is reasonably considered to be necessary by the University. If the University discontinues any programme, it will use reasonable endeavours to provide a suitable alternative.

If, following acceptance of the student's application, the programme is substantially varied from that described in the prospectus, the student is entitled to withdraw from the programme. In the event of such withdrawal an appropriate refund of programme fees will be made. Should industrial action occur, or other circumstances beyond the control of the University, which will interfere with its ability to deliver programmes or other services in accordance with descriptions set out in this prospectus, the University will try to minimise disruption as far as it is practical to do so.

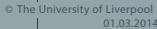
In accepting an offer of a place at the University of Liverpool, students agree to be bound by the University's rules and regulations under which the University and its students must operate, the principles of which are set out in the University's Statutes, Ordinances and Regulations.

The current Statutes, Ordinances and Regulations are contained in the University Calendar which can be accessed at www.liverpool.ac.uk/legal/. Alternatively details can be obtained on request from the Committee Secretariat, University of Liverpool, Foundation Building, Brownlow Hill, Liverpool, L69 7ZX.

Before admission, a student must provide satisfactory evidence of ability to pay all academic fees, cover maintenance expenditure and pay other dues. Unless otherwise agreed with the University, a student's registration will be suspended if agreed arrangements for payment of fees are not fulfilled. Please note that all outstanding tuition fees must have been paid by a student before he or she may receive their degree certificate. The University is entitled to withhold degree certificates for non payment of tuition fees and the University will retain any degree certificate which the student would otherwise be awarded until a student has discharged in full any outstanding tuition fees.

The University reserves the right to terminate the registration of a student who is subsequently found to have omitted or falsified facts or information in connection with his/her application for admission. If a student is dissatisfied with the information given in this prospectus, or about the way in which his/her application has been treated, the University has a formal admissions complaints procedure which can be accessed at www.liverpool.ac.uk/study/undergraduate/applying/admissions-policy/

Please note that, as part of the effort to ensure the best possible student experience, the University regularly reviews its portfolio to offer research driven, distinctive and challenging programmes of study. For the very latest developments on all our postgraduate programmes for 2017 entry, visit www.liverpool.ac.uk/study/postgraduate



| Department | Building | Grid | Department | Building | Grid | Department | Building | Grid | Department | Building | Grid |
|---|---------------------------|--------|--|--------------------|------------|---|--------------------------|--------|---|---------------|---------|
| A | | | E | | | L | | | | | |
| Academic Secretary's Office | 765 | D7 | Earth & Ocean Sciences | 201, 203 | B9 | Latin American Studies | 111, 107 | D2, E2 | Princes Trust | 505 | D4 |
| Accommodation Office | 528 | G7 | Educational Development | 776 | C5 | Law Clinic | 106 | D1 | Procurement | 765 | D7 |
| Active Learning Laboratory | 238 | C7 | Educational Opportunities | 421 | D7 | Law & Social Justice, School of | 106, 232 | D2, C8 | Proudman Oceanographic Laboratories | 259 | B9 |
| Almighier Directorate | 502 | D6 | Eleanor Rathbone Building | 106 | D2 | Legal, Risk & Compliance | 765 | D7 | Psychiatry | 315 | E11 |
| Alsop Building | 750 | E7 | Electrical Engineering & Electronics | 235, 236 | E7 | Leggatt Theatre | 421 | D7 | Psychology, Clinical | 302 | C8 |
| Alumni & Development Office | 765 | D7 | Energy Centre | 415 | D9 | Leverhulme Building | 149 | E4 | Psychology, School of | 106 | D2 |
| Applied Psychology | 106 | D2 | Energy Centre 2 | 357 | D9 | Library, Harold Cohen | 431 | D8 | Public Health & Policy | 302 | C8 |
| Archaeology, Classics & Egyptology | 146, 147, 253 | E3, B8 | Engineering, School of | 238, 233, 231, 237 | C7, C8, D8 | Library, Sydney Jones | 423 | F3 | | | |
| Architecture | 149 | E4 | English | 148 | E4 | Lifelong Learning, Centre for | 114 | C4 | Quality Control North West (Entrance via Block B) | 355 | C9 |
| Archive Studies | 144 | D3 | English Language Centre | 108, 406, 141 | E2, D3 | Life Sciences Building | 215 | F8 | | | |
| Archives Unit | 433 | F3 | Environmental Sciences, School of | 107, 109, 201, 203 | E2, D3, B9 | Liverpool Cancer Trials Unit | 353 | C9 | R | | |
| Arts, The School of | 148, 149 | E4 | Epidemiology & Population Health | 803 | F9 | Liverpool International College | 152 | D2 | Radiotherapy | 301 | C8 |
| Ashton Building | 422 | D7 | Evolution, Ecology & Behaviour | 215, 216 | F8, G8 | Liverpool Law School, The | 106 | D2 | Reilly Building | 501 | D6 |
| Augustus John Pub | 750 | E7 | Examinations Office | 765 | D7 | Liverpool Medical Institution | | B4 | Rendall Building | 432 | D2 |
| | | | Experimental Psychology | 352 | C9 | Liverpool Science Park Innovation Centre 1 | | B5 | Research Support Office | 353, 354 | C9 |
| B | | | Eye & Vision Science | 316 | E11 | Liverpool Science Park Innovation Centre 2 | | B6 | Research Finance | 354 | C9 |
| Bedford House | 505 | D4 | | | | Liverpool Student Homes | 776 | C5 | Research in Primary Science & Technology | 114 | C4 |
| Biochemistry and Cell Biology | 215, 216 | F8, G8 | | | | Liverpool University Press | 115 | D3 | Residential, Sport & Commercial Services (RSCS) | 765 | D7 |
| Biostatistics | 315 | B11 | F | | | | | | Ronald Ross Building | 803 | F9 |
| Biosciences Building | 215, 216 | F8, G8 | Facilities Management | 505 | D4 | Magnetic Resonance and Image Analysis Research Centre (MARIARC) | 310 | E9 | Royal Liverpool University Hospital | RLUH | E11 |
| Biomedical Sciences | 312, 313, 315 D8, E8, D11 | | Facilities Management Workshops | 236 | E7 | Mail Room | 433 | F3 | Roxby Building | 107 | E2 |
| Blackwell's Bookshop | 750 | E7 | Facilities Support Office | 765 | D7 | Management School (ULMS) | 427 | F2 | | | |
| Brodie Tower | 233 | C8 | Faculty of Health & Life Sciences Teaching Suite | 352 | C9 | Marie Curie Palliative Care Institute Liverpool | 329 | C11 | S | | |
| Brownlow Group Practice | 358 | D10 | Faith Express | 765 | D7 | Marine Ecology | 203 | B9 | Safety Adviser | 444 | C4 |
| Business Gateway | 354 | C9 | Finance Office | 765 | D7 | Mathematical Sciences Building | 206 | E6 | Security | 444 | C4 |
| | | | Foresight Centre (Block J) | 359 | C10 | MBA Suite | 423 | F3 | Shelley's Cottage | 255 | B8 |
| C | | | Foundation Building | 765 | D7 | Mechanical Engineering Building | 234 | B7 | Sherrington Building | 311 | D9 |
| Cafe on the Square | 750 | E7 | French | 108 | E2 | Medical Education | 360 | D10 | Sir Alastair Pilkington Building | 152 | D2 |
| Cancer Registry | 232 | C8 | Functional & Comparative Genomics | 215, 216 | F8, G8 | Medical Microbiology & Genito-Urinary Medicine | 315 | D1 | Sociology, Social Policy & Criminology | 106, 432 | D2 |
| Cancer Research Centre (CRC) | 329 | E11 | | | | Medicine, School Office | 301 | D11 | South Campus Teaching Hub | 120 | E2 |
| Cancer Studies | RLUH | C10 | G | | | Melville Grove Halls of Residence | 679 | G3 | Sports & Fitness Centre | 511 | D4 |
| Cancer Trials Unit | 353 | C9 | Garstang Museum | 147 | E3 | Mental & Behavioural Health Sciences | 233 | C8 | Sports & Fitness Centre – The Hall of Fame | 511 | D5 |
| Careers & Employability Service | 502 | D6 | Gastroenterology | 312 | E8 | MerseyBio | 216 | G8 | Stanley Theatre | 501 | D6 |
| Cedar House | 360 | D10 | Geography | 107 | E2 | Molecular & Clinical Cancer Medicine | 312 | D8 | Stephenson Institute for Renewable Energy | 207 | E5 |
| Cellular and Molecular Physiology | 312 | E8 | Geomagnetism Laboratory | 208 | F4 | Molecular & Clinical Cancer Medicine | 312 | D8 | Structural & Chemical Biology | 215, 216 | F8, G8 |
| Central & Eastern European Studies | 145 | E3 | George Holt Building | 231 | D8 | Mount Pleasant, 126 | 114 | C4 | Student Administration & Support | 765 | D7 |
| Central Teaching Hub | 221 | F6 | German | 108 | D3 | Mount Pleasant, 128 | 776 | C5 | Student Administration Centre | 765 | D7 |
| Central Teaching Laboratory (CTL) | 802 | F6 | Gordon Stephenson Building | 109 | D3 | Mountford Hall | 501 | D6 | Student Support Services | 502 | D6 |
| Centre for Excellence in Evidence-Based Learning & Teaching | 301 | C8 | Graduate School | 765 | D7 | Mulberry Court Halls of Residence | 670 | C5 | Student Health Service | 502 | D5 |
| Centre for Excellence in Medical Education | 360 | D10 | Graduate School Suite | 221 | F6 | Musculo-Skeletal Biology I & II | 104 | D3 | Student Recruitment & Admissions Office | 765 | D7 |
| Centre for Materials Discovery (CMD) | 213 | G6 | Gr Newton St Residences | 806 | B9 | Muslim Prayer Room | 423 | F3 | Student Services Centre | 502 | D6 |
| Chadwick Tower | 207 | E5 | Guild of Students | 501 | D6 | Muspratt Building | 232 | C8 | Surface Science Research Centre | 210 | F4 |
| Chapel, The (Foresight Centre) | 353 | C9 | Guild Shop | 502 | D6 | | | | Surgery & Oncology | RLUH | E11 |
| Chatham Building | 425 | F2 | H | | | | | | Sydney Jones Library | 423 | F3 |
| Chemistry | 213 | G5 | Haematology | 315 | D11 | N | | | | | |
| Children's Centre | 507 | G5 | Harrison Hughes Building | 238 | C7 | NanoInvestigation Centre at Liverpool (NICAL) | 353 | C9 | T | | |
| Civic Design | 109 | D3 | Harold Cohen Library | 431 | D8 | Nicholson Building | 203 | B9 | Teaching Quality Support Division | 765 | D7 |
| Clinical Chemistry | 315 | D11 | Hart Building | 766 | D6 | Nuclear Magnetic Resonance Centre for Structural Biology (NMR) | 214 | G8 | Thompson Yates Building | 301 | C8 |
| Clinical Engineering | 315 | D11 | Hartley Building | 253 | B8 | Nuffield Wing | 312 | E8 | Trade Union Office | 232 | C8 |
| Clinical Infection, Microbiology & Immunology | 803 | F9 | Health Sciences, School of | 301 | C8 | Nursery | 507 | G5 | Training & Development | 354 | C9 |
| Clinical Psychology | 302 | C8 | Health Sciences (Waterhouse Building B) | 352 | C9 | Nursing | 302 | C8 | Tudor Close Halls of Residence | 675 | C4 |
| Clinical Science | RLUH | E11 | Health Services Research | 352 | C9 | | | | U | | |
| Clinical Skills Resource Centre | 355 | C9 | Henry Cohen Lecture Theatre | 315 | D11 | Obesity & Endocrinology | 316 | E11 | University & College Union | 439 | C4 |
| Combined Honours | 148 | E4 | Hispanic Studies | 108 | E2 | Occupational Health Service | 444 | C4 | University Clinical Departments (UCD) | 316 | E11 |
| Committee Secretariat | 765 | D7 | History | 144 | D3 | Occupational Therapy | 304 | D8 | | | |
| Communication & Media | 148 | E4 | Hospitality Liverpool | 503 | D3 | Oliver Lodge | 208 | F4 | V | | |
| Community Studies | 360 | D10 | Human Anatomy Resource Centre | 301 | C8 | Orthoptics | 301 | C8 | Veterinary Science, School Office | 301 | C8 |
| Computer Science | 231, 422 | D8, D7 | Human Resources | 766 | D6 | Partnerships & Innovation | 765 | D7 | Veterinary Infection Biology | | B6 |
| Computer Services | 224 | F7 | I | | | Pathology | 315 | D11 | Veterinary Practice | 220 | H6 |
| Confucius Institute | 114 | C4 | Immunology | 315 | D11 | Philosophy | 143 | D3 | Veterinary Teaching Suite | 401 | B8 |
| Continuing Education & Professional Development | 114 | C4 | Innovative Catalysis | 203 | G5 | Physical Science, School of | 207, 208, 213 E5, F4, G5 | | Vine Court (East & West Blocks) | 804, 805 | F1, F2 |
| Corporate Communications | 765 | D7 | Infection Biology | 813 | F9 | Physics | 208, 210 | E4, F4 | Vice-Chancellor's Office | 765 | D7 |
| Counselling Service | 436 | C4 | Integrated Biology | 215, 216 | F8, G8 | Physiology | 313 | E8 | Victoria Building | 421 | D7 |
| Crown Place (Blocks 1, 2 & 3) | 526, 527, 528 | F7, G7 | International Recruitment & Relations Team | 765 | D7 | Physiotherapy | 304 | D8 | Victoria Gallery & Museum | 421 | D7 |
| Cultures, Languages & Area Studies | 108 | E2 | Institute of Ageing & Chronic Disease | 316 | E11 | Planning & Development Division | 765 | D7 | | | |
| Cypress Building | 108 | E2 | Institute of Infection and Global Health | 803 | F9 | Plant Sciences | 215, 216 | F8, G8 | Walker Building | 237 | C7 |
| | | | Institute of Learning & Teaching | 301 | C8 | Politics | 107 | E2 | Waterhouse Buildings A, B, C | 351, 352, 353 | D9, C9 |
| D | | | Institute of Translational Medicine | 312 | D8 | Popular Music | 101 | D2 | Waterhouse Buildings D, E | 354, 355 | C9 |
| Dental Hospital | 322 | C10 | Institute of Psychology, Health & Society | 352 | C9 | Port & Maritime History | 145 | E3 | Waterhouse Buildings F, J | 356, 359 | D9, C10 |
| Dental School | 322 | C10 | Irish Studies | 141 | D4 | Press Office | 765 | D7 | Wellcome Trust Tropical Centre | 355 | C9 |
| Derby Building | 252 | B8 | Italian | 108 | D2 | Primary Care | 302 | C8 | Whelan Building | 302 | C8 |
| Donnan & Robert Robinson | 213 | G5 | J | | | | | | Wolfson Centre for Personalised Medicine | 351 | D9 |
| Dover Court Residences | 806 | B9 | Jane Herdman Building | 201 | B9 | | | | Women's & Children's Health | 312 | D8 |
| Duncan Building | 315 | D11 | Johnston Building | 304 | D8 | | | | | | |
| | | | Jones Building | 303 | C8 | | | | | | |

Index of taught programmes by department

Archaeology, Classics and Egyptology

46

Ancient History MA
 Archaeology MSc
 Archaeology MA
 Archaeology MRes
 Classics MA
 Classics and Ancient History MRes
 Egyptology MA
 Egyptology MRes
 Palaeoanthropology MSc
 Palaeoanthropology MRes

Architecture

48

Master of Architecture MArch
 Advanced Transdisciplinary Design MSc
(London Campus)
 Architecture MA
 Architecture MSc *(London Campus)*
 Arts MRes
 Building Information Modelling MSc
 Digital Integrated Design MSc
 Sustainable Environmental Design
 in Architecture (SEDA) MSc

Chemistry

51

Advanced Chemical Sciences MSc

Communication and Media

52

Arts MRes
 Media and Communication MA
 (pathways in Digital Culture and
 Communication, and Media and Politics)
 Strategic Communication MSc
(London Campus)

Computer Science

54

Advanced Computer Science
 MSc/PGDip/PGCert*
 Advanced Computer Science with
 Internet Economics MSc/PGDip/PGCert*
 Big Data and High Performance
 Computing MSc/PGDip/PGCert*
 Computer and Information Security
 MSc/PGCert *(in partnership with
 Laureate Online Education)*
 Computer Science MSc/PGDip/PGCert

Information Systems Management
 MSc/PGCert *(in partnership with
 Laureate Online Education)*
 Information Systems Project Management
 MSc/PGCert *(in partnership with Laureate
 Online Education)*
 Information Technology MSc/PGCert
*(in partnership with Laureate Online
 Education)*
 Software Engineering MSc/PGCert
*(in partnership with Laureate Online
 Education)*
 Web Sciences and Big Data MSc/PGCert
*(in partnership with Laureate Online
 Education)*

Dentistry

56

Endodontics DDSc
 Orthodontics DDSc
 Special Care Dentistry DDSc

Earth Sciences

58

Petroleum Reservoir Geoscience MSc

Ecology and Marine Biology

59

Conservation and Resource
 Management MSc
 Conservation and Resource
 Management MRes

Electrical Engineering and Electronics

60

Energy and Power Systems MSc (Eng)*
 Microelectronic Systems MSc (Eng)*
 Telecommunications and Wireless
 Systems MSc (Eng)*

Engineering

62

Advanced Aerospace Engineering
 MSc (Eng)
 Advanced Manufacturing Systems
 and Technology MSc (Eng)
 Advanced Mechanical Engineering
 MSc (Eng)
 Advanced Transdisciplinary Design MSc
(London Campus)
 Biomedical Engineering MSc (Eng)
 Product Design and Management
 MSc (Eng)
 Risk and Uncertainty MSc (Eng)
 Sustainable Civil and Structural
 Engineering MSc (Eng)

English

64

Applied Linguistics MA
 Teaching English to Speakers of
 Other Languages (TESOL) MA
 Arts MRes
 English MA (pathways in Renaissance
 and Eighteenth-Century Literature,
 Victorian Literature, Modern and
 Contemporary Literature)

Geography

66

Contemporary Human Geography
 (Research Methods) MA
 Environment and Climate Change MSc
 Environmental Sciences MSc
 Geographic Data Science MSc
 Population and Health MSc

Health Sciences

68

Advanced Practice in Healthcare
 MSc/PGDip/PGCert
 Nursing MSc
 Radiotherapy MSc/PGDip

History

70

Master in Archives and
 Records Management
 Master in Archives and Records
 Management (International pathway)
 History MA (pathways in Cultural History,
 Twentieth Century History, Eighteenth
 Century Worlds and Medieval and
 Renaissance Studies)
 History MRes
 International Slavery Studies MA

Irish Studies

72

Irish Studies MA/PGDip/MRes
 Social Justice and Peace Building MA

Law

74

LLM/PGDip/PGCert
 Business Law and Economics MSc
(London Campus)
 LLM International Business Law
*(in partnership with Laureate
 Online Education)*

* These programmes are available with a Year in Industry.

Life Sciences 76

Advanced Biological Sciences MSc
Advanced Biological Sciences MRes

Management 77

Accounting DPS (London Campus)
Accounting MSc
Big Data Management MSc/PGDip/PGCert
Business Administration
(Football Industries) PGCert
Business Law and Economics MSc
(London Campus)
Corporate Finance MSc/PGCert
(in partnership with Laureate Online
Education)
Digital Business Enterprise
Management MSc
Economics MSc
Entrepreneurship MSc
Executive Healthcare Leadership
and Management PGCert
Executive Masters in International
Trade Compliance (London Campus)
Finance MSc/PGDip/PGCert
Finance and Investment
Management MSc (London Campus)
Financial Risk Management MSc
Football Industries MBA
Human Resource Management MSc
(Liverpool Campus and in partnership
with Laureate Online Education)
International Accounting and Finance
MSc/PGCert (in partnership with
Laureate Online Education)
International Business MSc
Liverpool MBA
Management MSc (Liverpool Campus
and in partnership with Laureate Online
Education)
Management MRes
Management PGCert (in partnership
with Laureate Online Education)
Management and Entrepreneurship MSc
Marketing MSc (Liverpool Campus and
in partnership with Laureate Online
Education)

Marketing PGCert (in partnership
with Laureate Online Education)
Master of Business Administration
MBA/PGCert (in partnership with
Laureate Online Education)
Operations and Supply Chain Management
MSc/PGDip/PGCert (Liverpool Campus
and in partnership with Laureate Online
Education)
Programme and Project Management MSc
Project Management (in partnership
with Laureate Online Education)
Public Administration MPA/PGCert
(in partnership with Laureate Online
Education)
Thoroughbred Horseracing Industries MBA

Mathematical Sciences 82

Financial Mathematics MSc/PGDip/PGCert
Financial and Actuarial Mathematics MSc
(London Campus)
Mathematical Sciences MSc/PGDip/PGCert

Medicine 83

Master of Public Health MPH (Liverpool and
London Campuses, and in partnership with
Laureate Online Education)
Medical Education MSc
Physician Associate Students PGDip

Modern Languages and Cultures 85

Latin American Studies MRes
Modern Languages MRes

Music 86

Arts MRes
Music MMus
Music Industries MA

Ocean Sciences 87

Sea Level: From Coast to Global Ocean MSc

Philosophy 88

Arts MRes
Art, Aesthetics and Cultural Institutions MA
Philosophy MA

Physics 89

Nuclear Science and Technology MSc
Radiometrics: Instrumentation
and Modelling MSc

Planning 90

Environmental Assessment
and Management MSc
Geographic Data Science MSc
Marine Planning and Management MSc
Town and Regional Planning MCD
Town and Regional Planning MA
Urban Design and Property
Development MSc (London Campus)
Urban Planning MSc (London Campus)
Urban Regeneration and Management MSc

Politics 92

International Relations and Security MA
International Relations and Security MRes

Psychology 93

Doctor of Clinical Psychology DClInPsy
Investigative and Forensic Psychology MSc
Mental Health Psychology MSc
(in partnership with Laureate Online
Education)
Organisational and Business Psychology
MSc (in partnership with Laureate
Online Education)
Psychology MSc (in partnership
with Laureate Online Education)
Reading for Life MSc (Liverpool
and London Campuses)
Research Methods in Psychology MSc

Sociology, Social Policy and Criminology 94

Criminological Research MRes
Social Research MRes
Social Research Methods MA
Social Research Methods
(CPD 5 credit modules)

Veterinary Science 96

Bovine Reproduction DBR
Veterinary Business Management PGCert
Veterinary Physiotherapy MSc/PGDip
Veterinary Professional Studies
MSc/PGDip/PGCert

Postgraduate research 98

Index of self-funded research programmes 100





Postgraduate Prospectus 2017

The University of Liverpool L69 7ZX

University Switchboard T: +44 (0)151 794 2000

Enquiries and Applications T: +44 (0)151 794 5927

<http://ask.liv.ac.uk>

www.liverpool.ac.uk/study/postgraduate



@livuni



www.facebook.com/UniversityofLiverpool



@livuni



UofLTube

