

# Combining Subjects

---

in the Faculty of Humanities  
and Social Sciences



2019/20





## A warm welcome to the Faculty of Humanities and Social Sciences!

As a student studying more than one subject within the Faculty, you are part of our 'Honours Select' community.

You will benefit from the opportunity to study contrasting or complementary subjects, broadening your academic knowledge and skills, and enhancing your prospects for after graduation.

However, you will also need to be prepared for the challenges of studying across different subjects to manage your time carefully and prioritise your work.

Here we provide some additional tips and information to help you navigate the process as an Honours Select Student.

Please contact **[hssenq@liverpool.ac.uk](mailto:hssenq@liverpool.ac.uk)** if you require any additional information.

Good Luck with the start of your studies.



**Prof Kristyan Spelman Miller**  
Associate Pro Vice Chancellor  
(Education)  
Faculty of Humanities and Social  
Sciences

# Information & Support

When combining two subjects in the Faculty of Humanities and Social Sciences, you will be able to access the same information and support services as Single Honours students. These include Central Support Services such as disability advice, counselling and mental health services, and money guidance. However, we understand that you may have some questions about the practicalities of studying two subjects. With that in mind, this guide details some of the key features of a combined degree, as well as where you can access assistance and advice relating to your studies.

## Overview

---

Degrees that combine two Faculty of Humanities and Social Sciences subjects are often referred to at the University of Liverpool as Honours Select programmes. What this means in practice is that you will be studying in two academic departments. Each of these departments will be based in one of the Faculty of Humanities and Social Sciences' four schools: School of the Arts; Histories, Languages and Cultures; School of Law and Social Justice; and the University of Liverpool Management School. If your chosen subjects are based in different schools, you will have contact with administrative and support services in both of them.







## Welcome Week

---

You will have received your Welcome Week timetables from the two departments you are studying in.

If you have a timetable clash with your combination of subjects, we are here to help! Many sessions are run twice to allow students to work around their other commitments.

There will also be a Faculty of Humanities and Social Sciences help desk in the Sydney Jones Library throughout Welcome Week with staff and current students available to answer your queries, point you in the right direction and ensure that your welcome week experience is positive and informative.

## Student Handbook

---

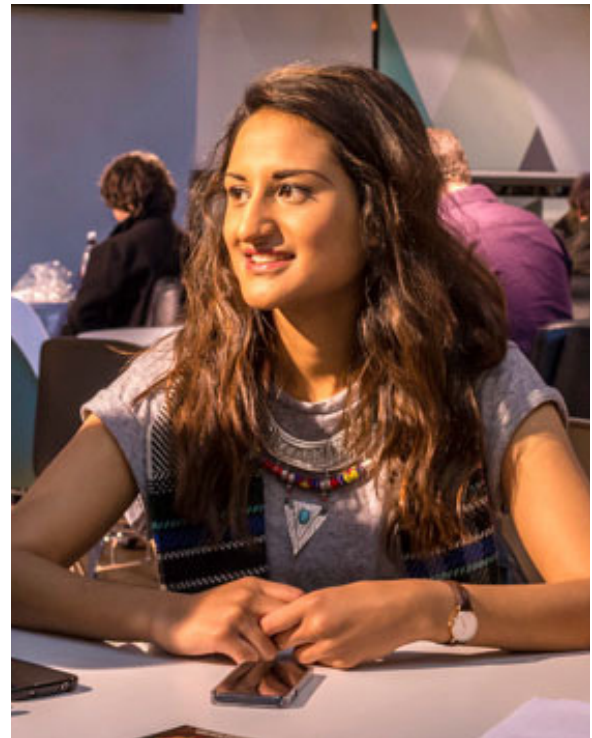
One of your main sources of information during your degree will be your student handbook, which you should receive during Welcome Week. Each school produces its own student handbook, providing guidance on key aspects of your student experience, such as assessment and feedback and procedures for reporting extenuating circumstances that may have affected your ability to study. If the subjects you are studying are based in different schools, you should receive two handbooks.



## Student Support Centre

---

Each School in the Faculty of Humanities and Social Sciences has a dedicated Student Support Centre providing dedicated administrative support for the duration of your studies. Staff in the centre will be able to assist you with a wide range of queries, including the following: registration and module changes; timetabling; coursework submission and examinations; and mitigating circumstances. As an Honours Select student, you should direct your query to the support centre it is most relevant to.



## Learning and Teaching Support Officers

---

If you are struggling with any aspect of University life, there are dedicated Learning and Teaching Support Officers (LTSOs) in each Student Support Centre who can help you. LTSOs can provide pastoral and academic support throughout your studies, as well as signposting you to specialised support if required. The guidance they provide is completely confidential and can be accessed through either pre-booked appointments or regularly scheduled drop-in sessions. If the two subjects you are studying are based in different schools, you are permitted to contact either schools' LTSOs.



## Academic Advisors

---

All University of Liverpool students are assigned an Academic Advisor at the beginning of their degree. Their role is to provide appropriate support for the duration of your studies, helping you to achieve your academic potential.

You will be introduced to your Academic Advisor during Welcome Week and will have the opportunity to schedule appointments with them to discuss your progress at regular points throughout your degree.

In addition, your Academic Advisor will be responsible for writing your reference for employment or further study during your final year. It is vital, therefore, that you meet with them regularly, in order for them to be able to provide an accurate representation of your capabilities to future employers.

## Honours Select Contacts

---

As an Honours Select student, your Academic Advisor will be based in the department responsible for administering the subject combination you are studying. However, there may be occasions when you require information or support relating to the other strand of your degree. To this end, there is additional guidance available to you as a student studying two subjects.

In addition to being able to access the Student Support Centre and LTSOs associated with either of your degree subjects, there is a dedicated Honours Select contact in each department. They will be able to provide subject-specific advice about the options available to you at the end of your first year, along with information about module choices in the subject area they oversee.

Details of who the Honours Select contact is in each department can be found at the back of this guide.





# Your Degree Pathway



One of the benefits of combining subjects is the variety and flexibility it offers you. Below you will find information about the various study options available to you as a student on a combined programme.

---

## Can I change the weighting of my subjects?

We recognise that your interests and aspirations may change during your first year of study. To this end, most subject combinations offer the opportunity to adjust the credit weighting of your chosen subjects by 25% at the end of your first year. This means that joint (50/50) programmes can be changed to a major/minor combination, whereby you take 75% of your credits in one subject and 25% in the other. Likewise, the weighting of most major/minor programmes can be adjusted to allow you to study either an equal number of credits in both subjects or to drop your minor subject and pursue a single honours degree in what had previously been your major.

However, there are some important exceptions that you need to be aware of:

- The weighting of Business Studies or Economics cannot be increased, regardless of whether they constitute 75%, 50%, or 25% of your degree.
- For 50/50 combinations involving Law, the Law component cannot be increased, due to mandatory module requirements for Qualifying Law Degrees. To practise Law after you graduate, you need to study the subject as either a single honours degree or as your major in a 75/25 programme. Equally, this means that if you choose to decrease the weighting of the Law component of your degree to 50%, you will not obtain a Qualifying Law Degree.
- Some languages, such as Basque and Catalan, can only be studied as 25% of your degree.

If you are unsure about the options that are available to you, please speak to your Academic Advisor or consult the relevant Honours Select contact.

---

## How do I adjust the weighting of my subjects?

You will be contacted by email early in the second semester of your first year. The email will include a form on which you can indicate whether and how you wish to adjust your subject weightings. Copies of this form will also be available in the Student Support Centres related to your programme.

If you wish to adjust the respective weightings of the subjects you are studying, the form will need to be signed by both your Academic Advisor and the relevant Honours Select contact for your subject combination. Completed applications should be returned to the email address or office specified on the form, with any changes to your degree coming into effect from the beginning of your second year.

If you do not wish to change the weighting of your subjects, you do not need to complete the form. You will simply continue on your existing pathway for the remainder of your degree.



---

## When will I have to decide on my final degree combination?

Your final degree combination needs to have been agreed by the end of your first year. To allow us to make any necessary timetabling adjustments, however, we usually ask that completed transfer forms are returned to us by the end of March.





# Study Abroad

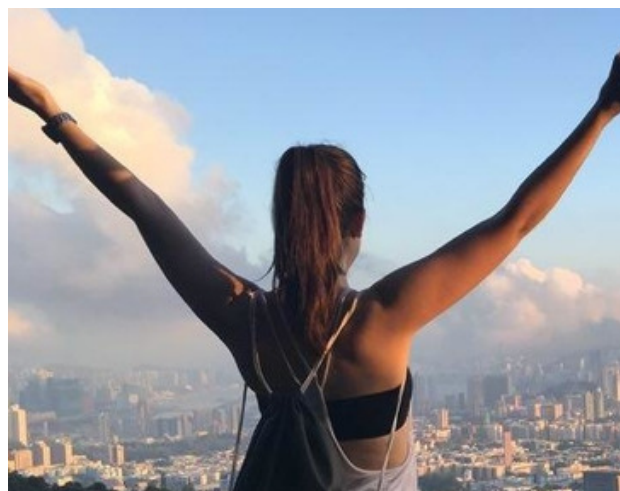


Many of our programmes provide students with the option to study abroad for part of their degree. The University of Liverpool has partnerships with almost 100 institutions in 27 countries, with opportunities ranging from a semester or summer abroad to spending a year at Xi'an Jiaotong-Liverpool University (XJTLU), our pioneering joint-venture university in Suzhou, China.

As a student studying two subjects, study abroad opportunities will be available to you, providing at least one of your subjects has a compatible partner institution and you meet any entry requirements that are specified.

For more information on study abroad opportunities, please visit:

[www.liverpool.ac.uk/study-abroad](http://www.liverpool.ac.uk/study-abroad).



# Rules and Regulations

---

As a student studying two subjects, you will need to follow the subject-specific regulations for both strands of your degree. These can be found in the respective programme handbooks for each subject which you should receive upon commencing your studies.

More broadly, you must also adhere to the University of Liverpool's general regulations at all times during the course of your studies. For more information, please refer to the 'Your University' handbook.

The University of Liverpool has an

institution-wide Code of Practice on Assessment which collates key policies and rules pertaining to assessment, as well as the principles that underpin them.

Within the Code of Practice, there are a number of appendices, detailing regulations such as the University's marking scale, degree classification system, examination regulations, and appeals and mitigating circumstances procedures.

To access the Code of Practice on Assessment, please visit:

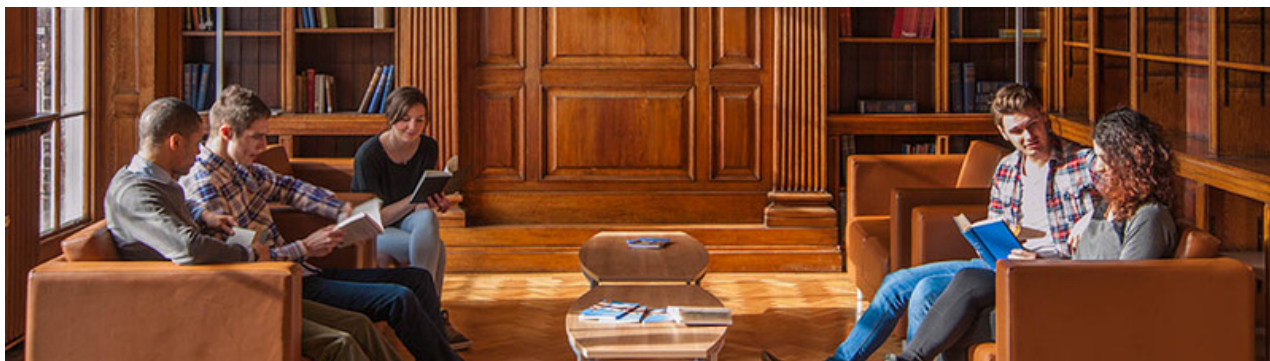
<https://www.liverpool.ac.uk/aqsd/academic-codes-of-practice/code-of-practice-on-assessment/>





# Useful Contacts

---



## School of the Arts

---

### Student Support Centre

Monday to Friday, 9am - 4:30pm

### LTSO Drop-in

Monday: 10am-12pm

Thursday: 2pm-4pm

Friday: 10am-12pm

**Email:** SSCArts@liverpool.ac.uk

**Tel:** 0151 795 0500

**Location:** 19 Abercromby Square

## School of Histories, Languages and Cultures

---

### Student Support Centre

Monday to Friday, 8:30am-5pm

### LTSO Drop-in

Monday to Friday, 1:30pm-3pm

**Email:** hlcenq@liverpool.ac.uk

**Tel:** 0151 794 2393 / 0151 794 2413

**Location:** 11 Abercromby Square

## School of Law and Social Justice

---

### Student Support Centre

Monday to Friday, 9am-5pm

### LTSO Drop-in

Monday: 2:30pm-4pm

Tuesday: 10:30am-12pm

Thursday: 2:30pm-4pm

Friday: 10:30am-12pm

**Email:** slsjteach@liv.ac.uk (teaching and timetabling queries); slsjsupport@liv.ac.uk (personal, support, and welfare queries)

**Tel:** 0151 795 0582

**Location:** School of Law and Social Justice Building

## University of Liverpool Management School

---

### Student Support Centre

Monday to Friday, 9am-5pm

### LTSO Drop-in

Monday to Friday, 10am-12pm

**Email:** ulmsenq@liv.ac.uk

**Tel:** 0151 795 3007

**Location:** University of Liverpool Management School Building



## Honours Select Contacts

Honours Select contacts can provide you with subject-specific advice for the strand of your degree based outside of your Academic Advisor's department. For example, if you are studying English and History and your Academic Advisor is based in the English department, you would speak to the Honours Select contact for History if your query related to that subject, rather than English. More specifically, Honours Select contacts can provide guidance on the options available to you at the end of your first year, as well as information about module choices in the subject area they oversee.

### School of the Arts

---

**Communication & Media:** Mr Peter Goddard (P.Goddard@liverpool.ac.uk)  
**English:** Professor Jill Rudd (g.a.rudd@liverpool.ac.uk)  
**Music:** Dr Paul Turowski (Paul.Turowski@liverpool.ac.uk)  
**Music Technology:** Dr Paul Turowski (Paul.Turowski@liverpool.ac.uk)  
**Philosophy:** Dr Daniel Hill (Djhill@liverpool.ac.uk)  
**Popular Music:** Dr Paul Turowski (Paul.Turowski@liverpool.ac.uk)

### School of Histories Languages and Cultures

---

**Ancient Greek:** Dr Zosia Archibald (z.archibald@liverpool.ac.uk)  
**Ancient History:** Dr Zosia Archibald (z.archibald@liverpool.ac.uk)  
**Archaeology:** Dr Jess Pearson (Jessica.Pearson@liverpool.ac.uk)  
**Chinese:** Dr Angela Becher (Angela.Becher@liverpool.ac.uk)  
**Classics:** Dr Zosia Archibald (z.archibald@liverpool.ac.uk)  
**Classical Studies:** Dr Zosia Archibald (z.archibald@liverpool.ac.uk)  
**Egyptology:** Dr Roland Enmarch (Enmarch@liverpool.ac.uk)  
**Evolutionary Anthropology:** Dr Jess Pearson (Jessica.Pearson@liverpool.ac.uk)  
**Film Studies:** Dr Abigail Loxham (Abigail.Loxham@liverpool.ac.uk)



---

**French:** Dr Rebecca Dixon (Rebecca.Dixon@liverpool.ac.uk)  
**German:** Dr Lyn Marven (L.Marven@liverpool.ac.uk)  
**Hispanic Studies:** Ms Ana Almeida (A.Almeida@liverpool.ac.uk)  
**History:** Dr Jon Hogg (jgh@liverpool.ac.uk)  
**International Politics and Policy;** Politics: Dr Nick Martin (N.J.Martin@liverpool.ac.uk)  
**Irish Studies:** Dr Clare Downham (Downham@liverpool.ac.uk)  
**Italian:** Dr Rosalba Biasini (Rosalba.Biasini@liverpool.ac.uk)  
**Latin:** Dr Zosia Archibald (z.archibald@liverpool.ac.uk)

## School of Law and Social Justice

---

**Criminology:** Dr Lynn Hancock (L.Hancock@liverpool.ac.uk)  
**Law:** Professor Rob Stokes (R.Stokes@liverpool.ac.uk)  
**Sociology:** Dr Lynn Hancock (L.Hancock@liverpool.ac.uk)  
**Social Policy:** Dr Lynn Hancock (L.Hancock@liverpool.ac.uk)

## University of Liverpool Management School

---

**Business:** Dr Julia Brennecke (jbrenne@liverpool.ac.uk)  
**Economics:** Dr Julia Brennecke (jbrenne@liverpool.ac.uk)



Faculty of Humanities  
and Social Sciences  
The University of Liverpool  
1-7 Abercromby Square  
Liverpool  
L69 7WY

[liverpool.ac.uk/honours-select](https://liverpool.ac.uk/honours-select)  
Email: [hssengq@liverpool.ac.uk](mailto:hssengq@liverpool.ac.uk)

---