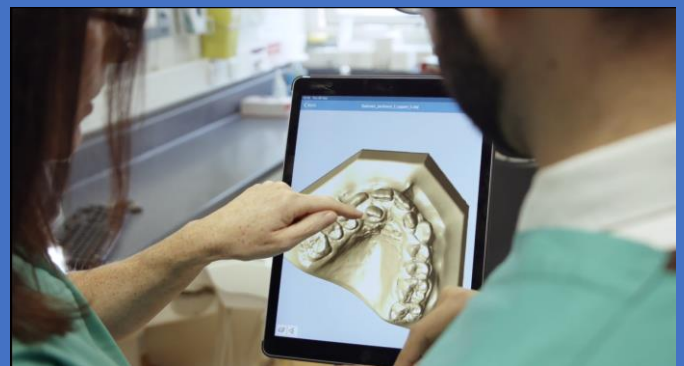




UNIVERSITY OF  
LIVERPOOL

School of  
Dentistry

# Research Strategy 2020 - 2023





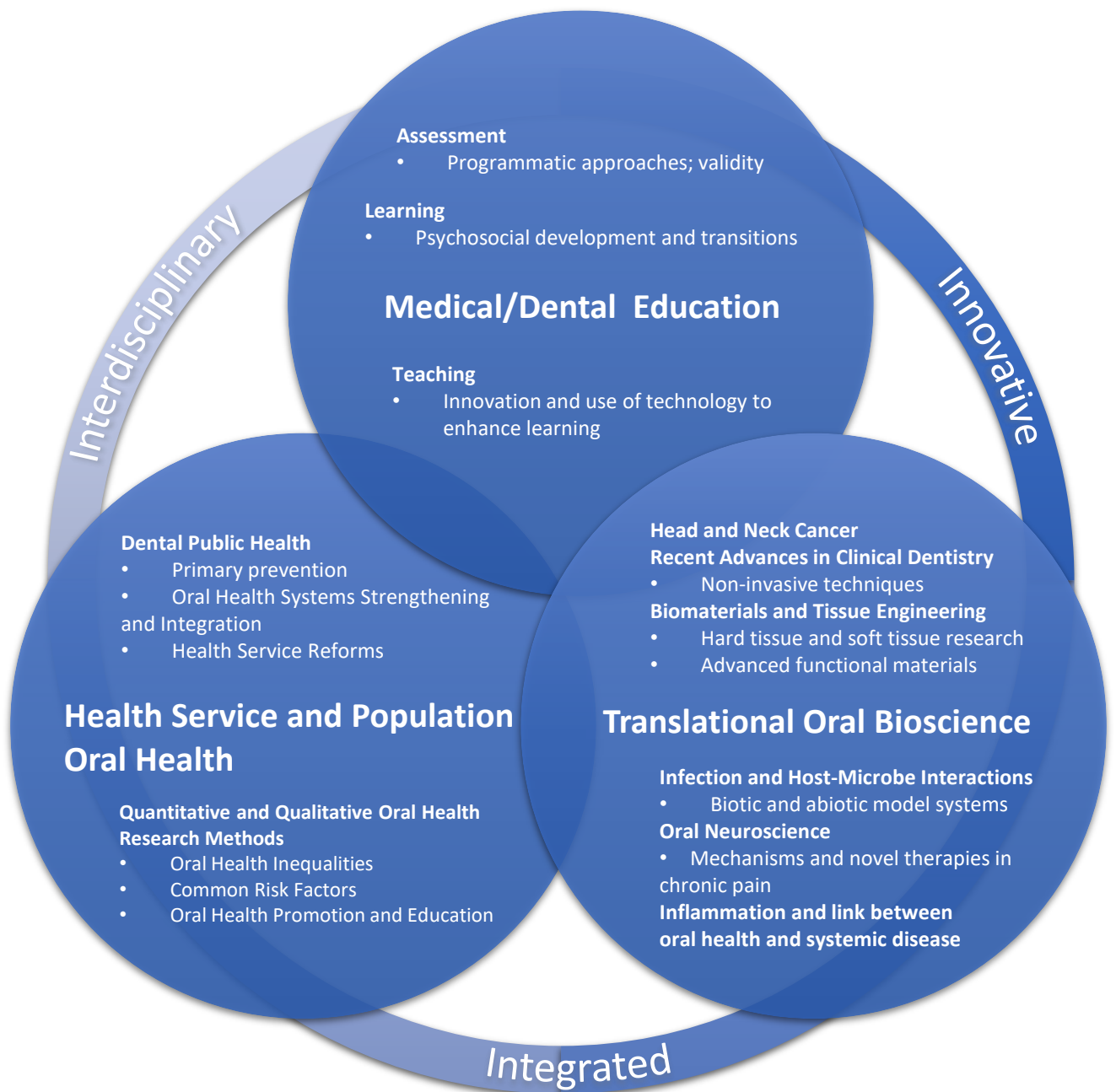
# Background

- In 2008, the changes to the faculty structures meant that high impact dental research was no longer associated with the School of Dentistry. This change had some advantages in allowing the school to concentrate on improving the student experience and the outcomes of the teaching programs. However, there were many drawbacks to this change, including the reduction in student exposure to research experience, an unfavorable change to the school's research reputation, significant decline in the number of PGR students in dentistry. This led to a lack of career development into research and teaching for clinical academics with both teaching and research outputs.
- Recent restructure of the Faculty of Health and Life Sciences, has meant that the School of Dentistry is now part of the Institute of life course and medical sciences (ILCaMs). The School is now in a position to forge new collaborations and develop its excellence in research whilst maintaining and further developing its educational reputation. Our research will focus on the needs of our NHS partners, local community and the wider communities, nationally and internationally.

**Professor Sondos Albadri**

Vice-Dean, Research & Postgraduate Studies

# School of Dentistry Research



Our dental research encompasses multidisciplinary groups of clinicians and scientists whose aim is to develop systems which promote, sustain and protect oral health through a combination of laboratory and clinical studies together with the development of innovative technologies which enhance dental education by research led teaching.



## Aims

- Improve our research performance and position to be recognised nationally and internationally as a research active dental school.
- Integrate our research into our curricula and deliver research connected teaching in an evidence based way according to the University Curriculum 2021.
- Deliver world class research that leads to improvements in oral health, the delivery of care and treatment outcomes.

# Objective 1

Focus our research activities to create an outstanding research portfolio that aligns with the priorities of our local community and local NHS partners, the national top 10 priorities for Oral and Dental Health Research set by the James Lind Alliance Priority Setting Partnership (2018) and the current and future University strengths.

## Actions /indicators

Support and promote	Support and promote the development of NIHR/ MRC and other grant applications
Support	Support the start-up and recruitment to NIHR portfolio studies
Promote and support	Promote and support inter-disciplinary collaboration within the university and nationally to develop grant applications
Support and develop	Support and develop staff who are research active by ensuring their job plan /workload allow for protected research time
Work	Work closely with NHS partners in primary, secondary and tertiary care to address their needs and the needs of the local communities
Develop	Develop Patient and Public Involvement groups to support research development and delivery

# Objective 2

Develop new global inter and intra disciplinary collaborations to address the university's international aims.

## Actions /indicators

Consolidate	Consolidate and build collaboration within ILCaMs and the wider university through PhD and DDSc studentships leading to larger funding applications
Support	Support the start-up and recruitment to NIHR portfolio studies
Ensure	Ensure active school presence at international research conferences including IADR and OTTAWA
Support Opportunity	Support staff to explore international exchange opportunities
Increase	Increase number of PGR students both clinical and non-clinical with a clear association to the School of Dentistry
Promote	Promote and support the publication of the school research output

# Objective 3

Ensure that our research basic science activities focus on the impact and the link to clinical research.

## Actions /indicators

Review	Review current research structure, facilities, staff and outcomes
Create Priorities	Create a clear research structure focusing on impact and addressing key priorities to improve delivery of care, health and educational outcomes
Collaborate	Collaborate with scientist in ILCaMS, the faculty and university to develop doctoral and post-doctoral fellowships applications



# Objective 4

Develop future clinical academic workforce.

## Actions /indicators

Support	Support academic clinical fellows (ACF) and NIHR academic clinical lecturers (ACL) to develop doctoral and post-doctoral applications in line with key research priorities
Alignment	Ensure that annual IAT allocation are aligned to the School research aims and areas of strength
support	Support academic career development opportunities in primary care
Attract	Attract UG dental students towards academic careers through the Academy of Medical Science's INSPIRE program and university intercalation opportunities
Work With	Work with university ICAT to support academic trainees to develop fellowship application
Develop Opportunities	Develop opportunities to retain clinical academic trainees who demonstrate excellence and drive towards an academic career



# Objective 5

Engage our UG students in research opportunities within the school, faculty, the wider university to inspire them towards an academic career.

## Actions /indicators

Promote	Promote UG research opportunities through the use of collaborative research projects with active groups and PGR projects
Increase	Increase UG awareness of evidence-based dentistry through research initiatives such as journal clubs and through the promotion of current research output from the school
Develop	Develop research focused modules for the centennial curriculum that further promote the role of clinical academics in improving health outcomes
Reintroduce	Reintroduce intercalation for UG students with the development of dentistry specific modules or programs

