



LATEST RESEARCH FROM SAVSNET

ANTIMICROBIAL PRESCRIPTION

AND HOW YOU CAN EVALUATE YOUR OWN

Full paper published in The Veterinary Journal available [here](#)

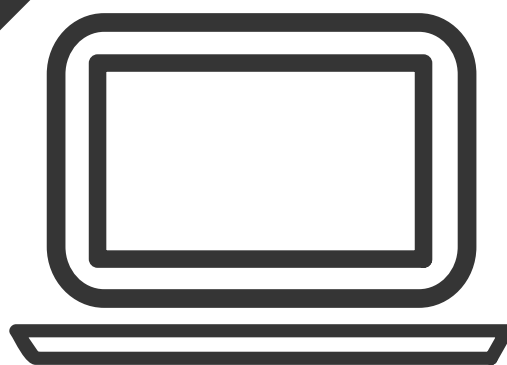
1



RESISTANCE

Antimicrobial resistance is an increasingly important global health threat

2



STUDY

Data from 457 UK vet premises taking part in SAVSNET to investigate antimicrobial prescription

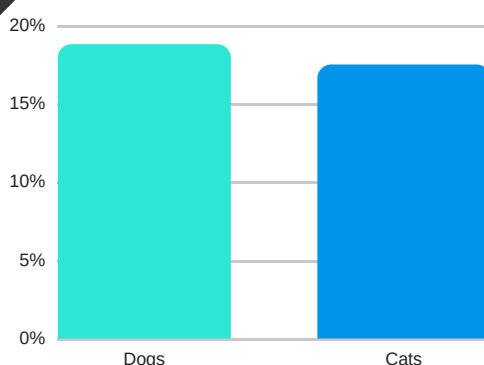
3



DATA

Data was collected from 413,870 dogs and 200,541 cats

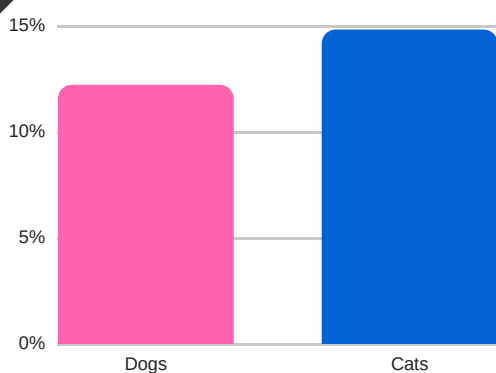
4



TOTAL USE

Antimicrobials prescribed more frequently in dogs than cats

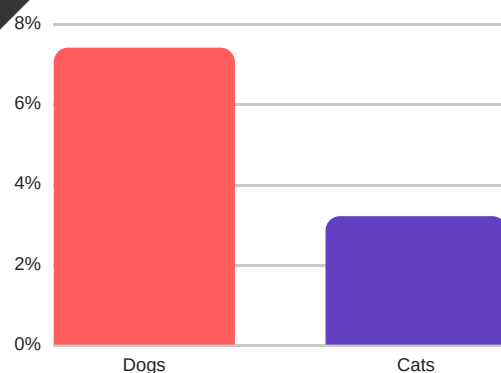
5



SYSTEMIC USE

Systemic antimicrobials were more frequently prescribed in cats compared to dogs

6



TOPICAL USE

Dogs were prescribed topical antimicrobials more frequently than cats

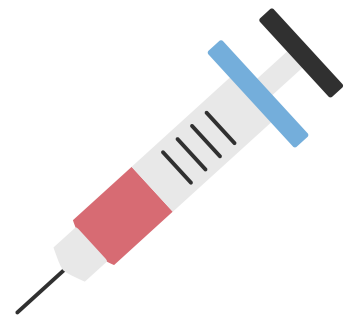
7



DOGS

In dogs, clavulanic acid potentiated amoxicillin was the most frequently prescribed agent

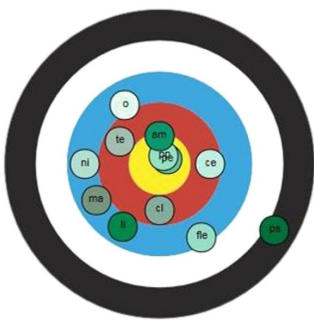
8



CATS

Cats were most frequently prescribed cefovecin

9



WHAT ABOUT YOU?

Your **SAVSNET portal** allows you to evaluate your usage of different antimicrobials

10



THE BENEFITS?

See how you compare to others
Use in practice meetings
Assess your responsible use

"Antimicrobial resistance (AMR) is becoming a real issue in veterinary and medical practice, leading some to question the right of veterinary surgeons to prescribe particular classes of antimicrobials. If vets want to help retain efficacy of antimicrobials and the right to prescribe, the profession has to demonstrate a continued commitment to responsible usage of antimicrobials.

We believe that giving vets personal knowledge of how they prescribe in relation to their anonymised peers is a first step, allowing them to reflect on their own individual prescription and, if needed, helps them take the necessary steps in their own practice to ensure continued responsible use of antimicrobials."

David Singleton MSc, BVSc, MRCVS
PhD student funded by the VMD, SAVSNET and University of Liverpool



Veterinary practices

Register now for your portal

Email savsnet@liverpool.ac.uk to request portal access and see your practice data in a new way