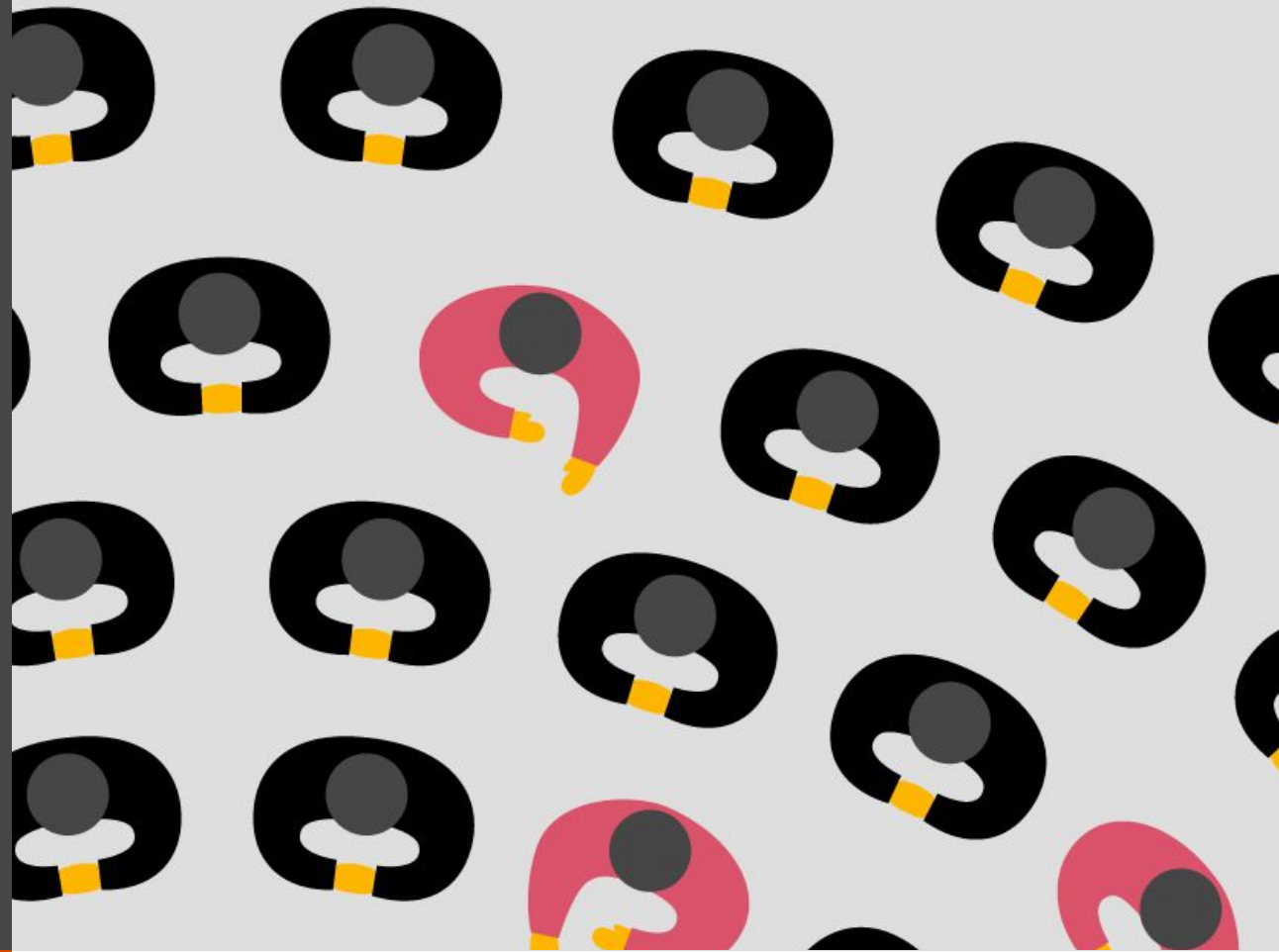


AI and the implications for the Future of Work

Jon Andrews
Head of Technology & Investments
[@jonandrews139](#)



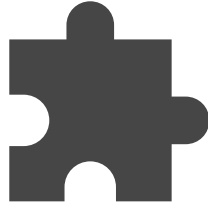
What do we mean when we talk about AI?



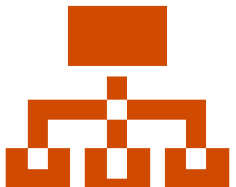
**Artificial
Intelligence**



**Natural
Language
Processing**



**Machine
Learning**



Deep Learning



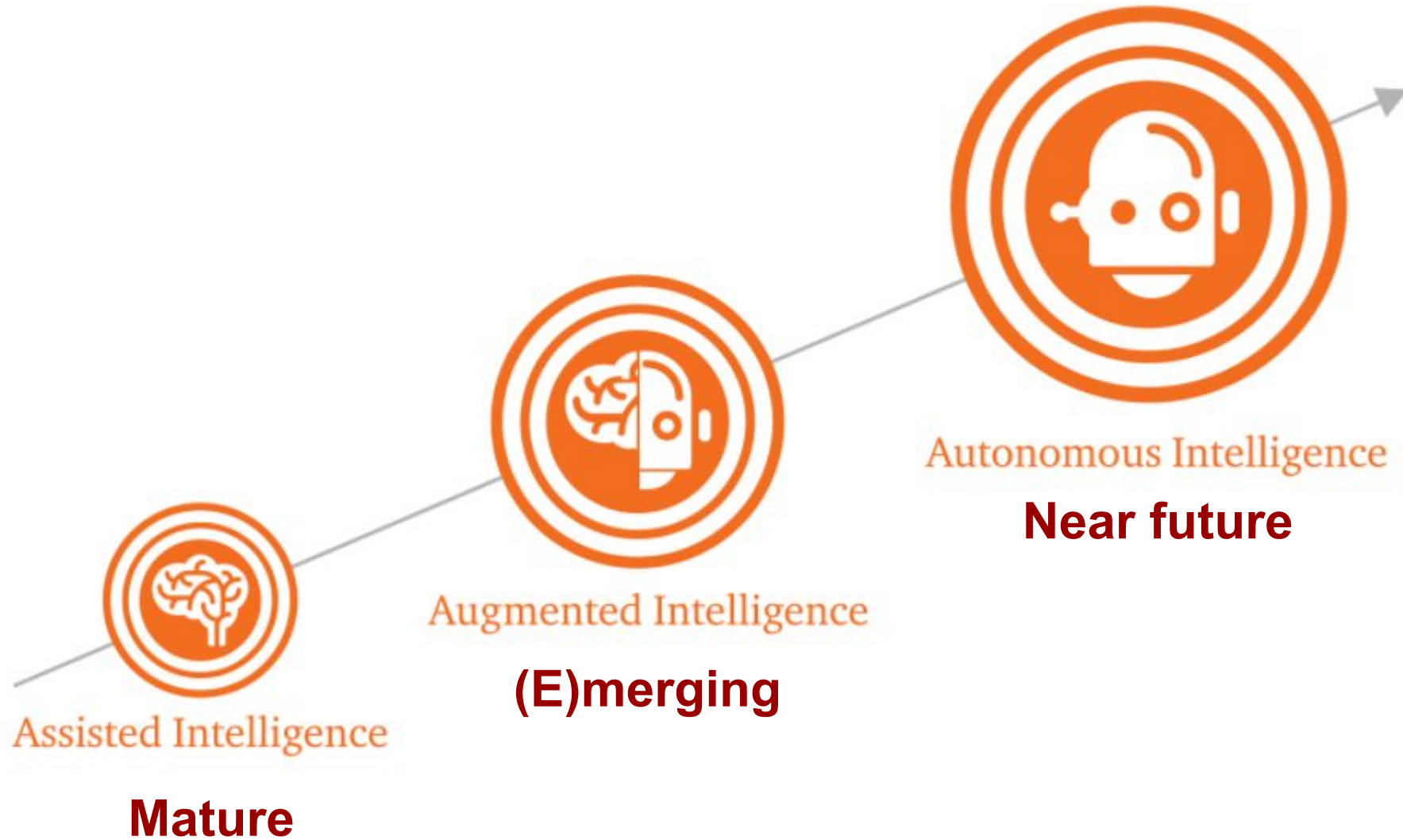
**Speech
recognition**



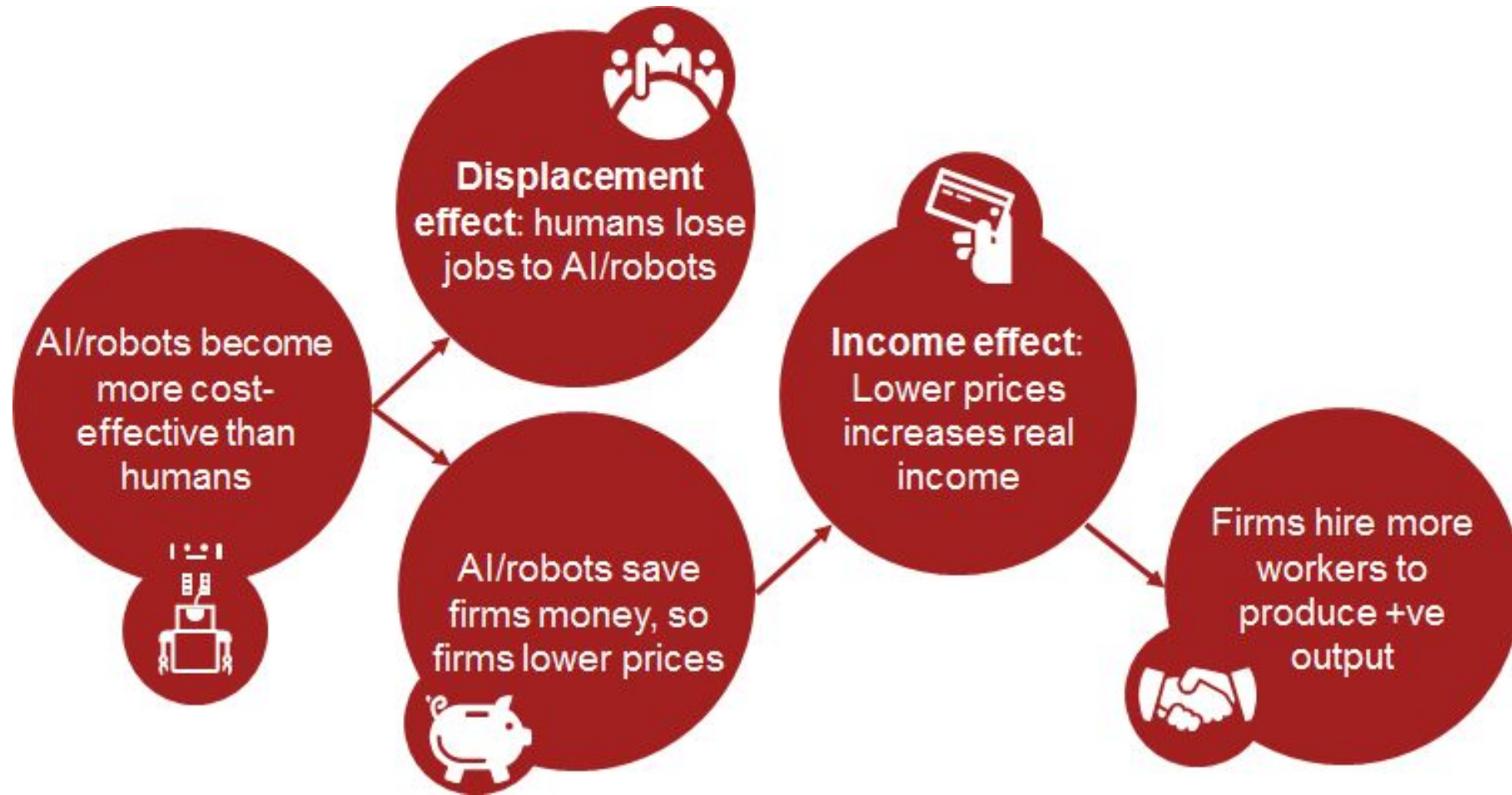
**Machine
vision**



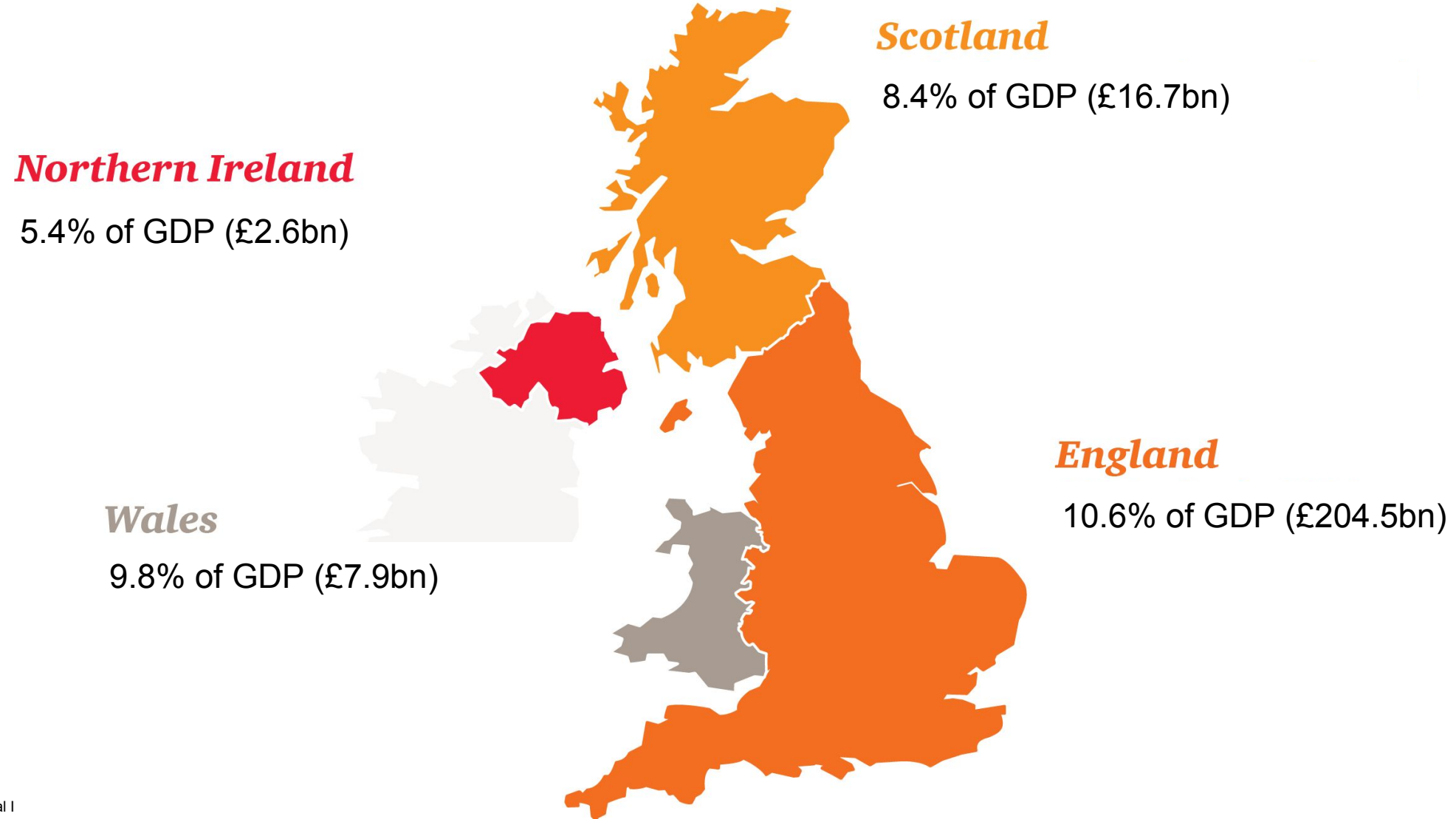
Where is AI now?



How will AI impact the world of work?



What will the macroeconomic impact of AI be on the UK?



Who will be impacted by AI?



*Autonomous
vehicles*



Healthcare

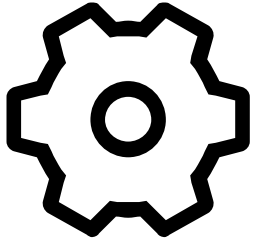


FS

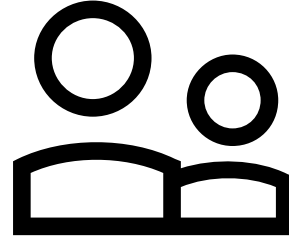


Retail

Who will be impacted by AI?

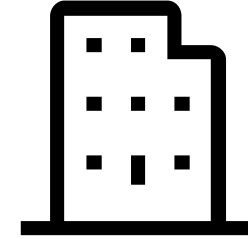


Share of UK
jobs that
could be
automated **30%**



Men **34%**

Women **26%**



Graduates **11%**

Medium
education **36%**

Lower
education **44%**

What does this mean for humans at work?

Businesses are facing challenges to digital innovation

Skills

63%

cited lack of skilled teams as a key obstacle to digital innovation

Processes

42%

cited slow or inflexible processes

Leadership

54%

say their leadership is digitally savvy

Workforce

28%

say they lack a strategic focus on training

What do we need to do?

- Democratising tech
- Build agility and leadership
- Test strategies against potential futures

“We always overestimate the change that will occur in the next two years and underestimate the change that will occur in the next ten. Don't let yourself be lulled into inaction.”

Bill Gates

The Road Ahead, 1996



Thank you

pwc.com

