



Pain Research Institute

This is the Pain Research Institute newsletter, the purpose of which is to keep researchers and clinicians informed of the current research going on in the institute. We hope this will enable clinicians to identify areas of research that they may be interested in whilst keeping informed about studies opening to recruitment as they may have pain patients they wish to refer.

European Standards for CRPS



The European Pain Federation established a pan-European task force of experts in CRPS led by PRI Director Andreas Goebel who followed a four-stage consensus challenge process to produce mandatory quality standards worded as grammatically correct statements. This has led to European Standards for the diagnosis and management of Complex Regional Pain Syndrome. (Goebel et al., European Journal of Pain 2018, in press)

Volunteers for PRI Research Day 2019

So far we have had good response to our invite to the next PRI Research and Publication Day which will be held on 22nd March 2019 at Clinical Sciences Building, Aintree University Hospital, L9 7AL. We are now looking for volunteers to present either a poster or short presentation at the event on any pain projects you are involved in. If you are interested in taking part or attending the event then please contact

Hayley.McCullough@Liverpool.ac.uk

OPIOID MANAGEMENT

Opioid Management in Chronic non-malignant Pain Workshop -16th February 2019

With Dr Bernhard Frank as the course convenor, the course is aimed at Consultants in pain medicine, Gp's, Nurse Prescribers & Community Pharmacists. The fee is £50 to attend. For more information please contact 0151-529-5820

Dr. Andreas Goebel, Reader in Pain Medicine & Director of the PRI



Turo Nurmikko, Professor of Pain Relief, Walton Centre NHS Foundation Trust



Francis McGlone, Professor in Neuroscience, School of Natural Sciences & Psychology, Liverpool John Moores University



Dr. Bernhard Frank, Consultant in Pain Medicine and Anaesthesia Walton Centre NHS Foundation Trust



Selina Johnson, Pain Specialist Physiotherapist



Manohar Lal Sharma, Consultant in Pain Medicine, Walton Centre NHS Foundation Trust



Andy Marshall, Consultant Clinical Neurophysiologist, Salford Royal Foundation Trust



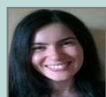
Francis O'Neill, Senior Lecturer and Honorary Consultant in Oral Surgery



Helen Poole, Reader in Applied Health Psychology, Liverpool John Moores University



Serena Sensi, Research Technician at the Rheumatology Laboratory, University Hospital Aintree



Hannah Twiddy, Specialist Clinical Psychologist & Research Lead for Pain Management Programmes



Hayley McCullough, PRI Administrator



Major Grant Application Submitted

A 3.5Mil€ European Union Marie-Curie PhD training grant program application, 'RELIEVE', has been submitted by an international consortium led by PRI researcher Dr. Andreas Goebel, to investigate a new mechanism for chronic pain, and to train the next generation of young European pain researchers. The consortium includes senior applicants from 10 European countries, who will eventually take on 13 PhD students between them. Their initial proposal was rated highly, with 90% and the group have now further strengthened their application - fingers crossed! These EU grants are a unique opportunity to build on collaborative strength between European research groups, combining expertise not available in any single institution.



Liverpool Course on Management of Chronic Pain "A Practical Approach" 4th-6th July 2019

Pain Relief Foundation have announced their next course and there's an early bird registration fee of £350 so be quick as after 3rd May 2019 the fee will be £450. For more information on the course including a detailed programme or to register for the event then please contact either B.hall@painrelieffoundation.org.uk or Lorraine.Roberts@painrelieffoundation.org.uk or visit the PRF website



Research Studies... a few to mention

- Investigating Diabetic Neuropathy During Initiation of Intensive Glycaemic Control
- The Utility of Non-Invasive Ocular Imaging in Diabetic Foot Disease
- A Multicentre, double-blind, centre-stratified multi-period crossover trial to evaluate the efficiency of the Optimal Pathway for Treating neuropathic pain in Diabetes Mellitus (OPTION-DM)
- **Pain Relief Foundation Studentship**-A study looking into validity of confocal corneal microscopy in patients with painful chemotherapy induced and idiopathic small fibre neuropathy.

For more information on all of the above studies please contact the Principal Investigator on Ualam@Liverpool.ac.uk

- **Serum IgG autoantibodies in patients with Fibromyalgia**-We require 100 patients with a diagnoses of FMS (>1year), without other conditions, we will be collecting blood to be used in laboratory experiments. Principal investigator at andreasgoebel@rocketmail.com
- **Doctorate Clinical Psychology trainee project**- 8 participants post PMP who may not have shown significant change. It is hypothesised that those who do not respond well to Cognitive Behavioural based intervention may respond better to therapy such as PIT. Principal Investigator Hannah.Twiddy@thewaltoncentre.nhs.uk
- A study for long term benefit of Spinal Cord Stimulator –Principal Investigator Bernhard.frank@thewaltoncentre.nhs.uk

If anybody has anything they would like to add to the newsletter please contact Hayley.McCullough@liv.ac.uk