

# Stroke, Vision and Driving

## IN GENERAL

- No driving within 1 month of stroke onset
- No driving within 6 months if neurosurgery
- No driving if persistent functional impairment



O H

## VISION

You should be able to read these letters when held 3 metres away from you.

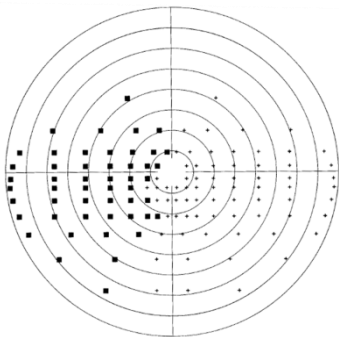
## DOUBLE VISION

- You cannot drive with this.
- Double vision can be corrected by a prism or patch.
- If using a patch you must have adapted to being one eyed.
- Special cases - some people can drive with double vision if present for longer than 6 months and they have adapted to it.



## VISUAL FIELD LOSS

- You cannot drive with significant visual field loss.
  - Insurance becomes null and void.
- DVLA requirements for visual field =
- 120 degrees wide with at least 50 degrees to each side
  - 40 degrees high with clear 20 degrees above/below centre
  - Special cases - some people can request a specialist driving test if they have non-progressive visual field loss, are at least one year post stroke and adapted to vision loss.



## VISUAL PERCEPTION

- If you struggle to recognise what you see (e.g. not recognising familiar objects/ surroundings), it is not safe to drive.

## CAUTION

Loss of independence from loss of driving causes huge impact to individuals. BUT, not so huge as harm/death to others through continued, illegal driving.