



## Being Posthuman? Some Thoughts

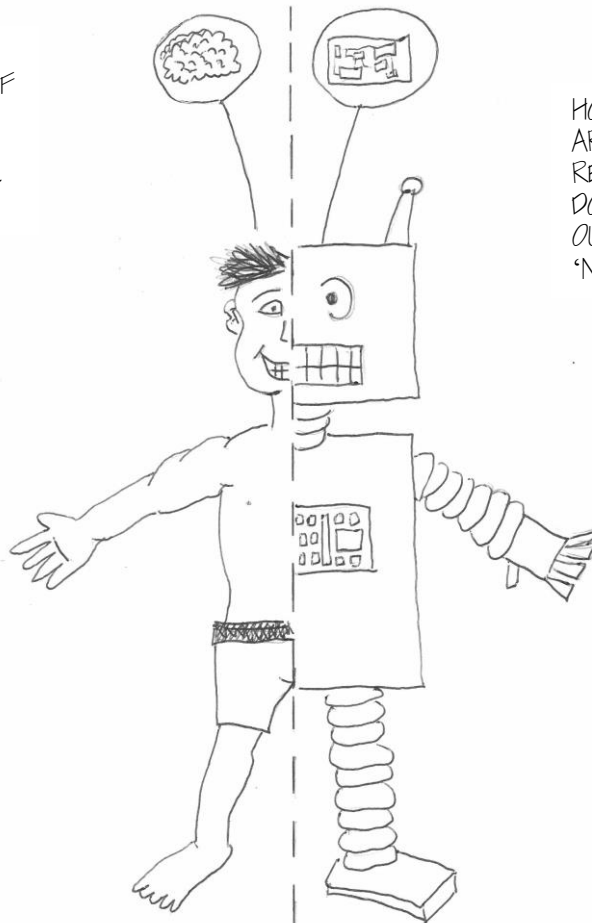
WHAT ISSUES EMERGE IF A HUMAN MIND IS 'UPLOADED' INTO A MACHINE? IS IT STILL HUMAN?

HOW DO MACHINES 'THINK'? COULD MACHINES EVER THINK LIKE HUMANS? COULD THEY EVER 'FEEL'?

HOW DO HUMAN MINDS PROCESS INFORMATION? IF WE CHANGE GENETICALLY AND TECHNOLOGICALLY, WILL WE STILL THINK THE SAME WAY?

HOW ARE ROBOTS AND ARTIFICIAL INTELLIGENCES REPRESENTED IN SF? WHAT DOES THIS TELL US ABOUT OUR ATTITUDES TOWARDS 'NON-HUMAN' INTELLIGENCE?

**Will Slocombe**, a member of the Department of English, is interested in how we think, and the ways in which we represent this. He is also interested in the ways in which Science Fiction has represented Artificial Intelligences, robots, and cyborgs. He is far better at thinking than he is at art.



GIVEN THAT THINGS LIKE ALIENS AND ROBOTS ARE USED TO EXAMINE HUMAN CHARACTERISTICS, WHAT DO THESE FORMS OF REPRESENTATION TELL US ABOUT OURSELVES?

HOW WORRIED SHOULD WE BE ABOUT AI / ROBOTS TAKING OVER THE WORLD? WHAT IS THE 'SINGULARITY' AND WHAT MIGHT IT MEAN FOR HUMAN EXISTENCE?

WHAT HAPPENS WHEN A MACHINE LOOKS AND ACTS MORE LIKE THIS THAN LIKE THIS?

WHERE DOES THE 'CYBORG' FIT INTO THE RELATIONSHIP BETWEEN 'MAN' AND 'MACHINE'? WHAT DOES IT MEAN TO BE A 'CYBORG'?

WHAT IS THE DIVIDING LINE BETWEEN 'MAN' AND 'MACHINE' - WHEN DOES ONE BECOME THE OTHER?