

Infectious bovine keratoconjunctivitis (New forest eye)

Cause:

Bacteria called *Moraxella bovis* which are normally found on the surface of healthy eyes. Complications such as flies, dust, and other infections (such as IBR) affecting the eye then allow this bacteria to cause disease.

Due to the connection with flies and dust it is more commonly seen in the summer time, when cows are out at grass.

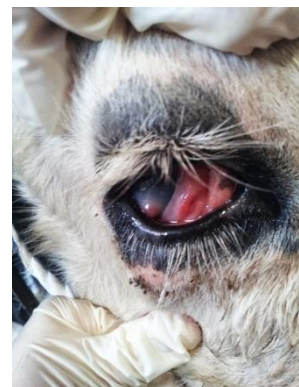
Signs:

- White spot seen in the middle of the eye
- Both or one eye can be affected
- The eye may be reddened, swollen and discharging
- The animal may have its eye closed



Treatment:

- Antibiotics:
 - o Topical creams – need repeating
 - o Injection into the eyelid
 - o Injection into the muscle
- Third eyelid flap:
 - o May need to be done in advanced/severe cases to protect the eye to try and prevent rupture of the eye itself.
- Isolate affected animals if possible



Prevention is aimed around reducing predisposing factors such as:

- Fly control
- Adequate space at feeders
- Avoiding particularly dusty areas or those with long vegetation