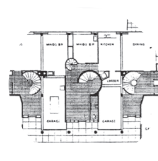
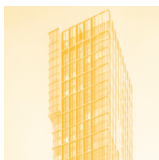




How do



we live?



Housing Workshop \ London 2019
11th — 18th April
Jocelyn Froimovich, Johanna Muszbek \ Project Home
london@howdowelive.com

University of Liverpool
in London
33 Finsbury Square,
London EC2A 1AG



“How Do We Live?” Housing Workshop / London II

11th April— 18th April 2019

Jocelyn Froimovich, Johanna Muszbek, University of Liverpool in London

A big percentage of a city's building stock is destined to housing. The sort of housing that is continuously repeated, not the one-of-a kind client-tailored house. As cities' growth fluctuate, housing demands vary. Thus, housing in a city is a constant enterprise: built, converted, recycled, and restored. **Housing is the stuff cities are made of.**

Cities house housing. Housing house lives. **Lives have changed significantly. Has housing in the city followed these changes?** Is urban housing being designed accordingly?

Different lifestyles need different homes. Different homes develop within housing types. Housing types respond to and create a particular urban condition and vice versa. This is a problem that has been thought of before. The question of how to design housing has accompanied the discipline throughout the last century, but many housing design paradigms still remain the same. Thus, **the goal of the workshop is to design new housing types that expand the existing housing repertoire.** These new types will respond to current and future lifestyles and contribute to resolve specific urban demands.

As part of *Project Home*, a research and pedagogic programme on housing launched in 2015, the series of workshops *How Do We Live?* analyse domesticity in different urban scenarios. This series will continue as a collaboration between University of Liverpool School of Architecture and Pontificia Universidad Católica de Chile, with a one-week workshop in London - at the University of Liverpool in London Campus. **This workshop will take London's housing and urban conditions as its case study.** The question for this workshop is: **what defines the housing crisis of London today?** By forcing the notion of crisis as a methodology, students will question a specific London housing type and propose alternative designs for each of them. Following our previous design investigations on ownership models and shared spaces, this time **London's housing crisis will be framed through the analysis of materials and technologies related to residential types.**

We will look closely at some of the city's exemplary and banal residential buildings. Analysing the framework in which these housing projects are produced will allow us to assess the relationship between current models of residence and design solutions. **The goal is to productively critique preconceived notions of efficiency, programme, and other modernist inheritances so as to envision future schemes.**

The workshop will take place in London between April 11th and April 18th, 2019.

University of Liverpool in London Campus, 33 Finsbury Square, London EC2A 1AG.