



UNIVERSITY OF  
LIVERPOOL

*Thank you*

**DONOR REPORT** 2019-20



Selection of images including: Alumni Awards 2019 and IntoUniversity North Liverpool Celebration March 2020

# Welcome

First and foremost, I hope that you and your families are safe and well. This has been a challenging and unprecedented year and I would like to express my personal thanks to you for your support for the University. Your generosity has enabled us to provide scholarships that will support the next generation of high calibre leaders and innovators, as well as fund urgent, ground-breaking research that will literally save lives.

The University is proud to offer an unrivalled student experience and we are recognised for our outstanding work in widening participation and student employability. Philanthropic support has played a large part in enabling projects such as the IntoUniversity North Liverpool project which is helping students aspire to go to university.

We launched our COVID-19 Emergency Response campaign in March to provide vital funds for research into combating and treating the virus, and to support those of our students struggling with financial hardship as a result of the pandemic. We are delighted to report that we have received over half a million pounds worth of donations and PPE equipment.

Our new teaching and performance centre, which opens next year, will provide our students and the city of Liverpool with a fantastic new performance venue and rich cultural experiences. I am thrilled that one of our most generous supporters, Yoko Ono Lennon, will add her name to the new centre.

Civic pride is at the heart of our work and the University continues to invest in crucial research to support better health outcomes for the local community. We are also proud to be at the forefront of helping to deliver the road map for Liverpool's post-pandemic recovery. Your support is vital to our work and I would like to express our grateful thanks.

*Janet Beer*

Professor Dame Janet Beer  
Vice-Chancellor



# Your impact 2019-20

THANKS TO  
SUPPORTERS LIKE YOU,  
THE UNIVERSITY  
HAS RAISED A TOTAL OF  
**£2,935,652**  
BETWEEN 1 AUGUST 2019 AND 31 JULY 2020

**783**  
REGISTERED VOLUNTEERS

**1,445**  
DONORS  
**522**  
NEW DONORS



**5,520**  
VOLUNTEER HOURS

GIFTS FROM  
DONORS IN  
**41**  
COUNTRIES



**188** LEGACY  
PLEDGERS

**\$769,378**  
RAISED BY DONORS  
IN THE UNITED STATES

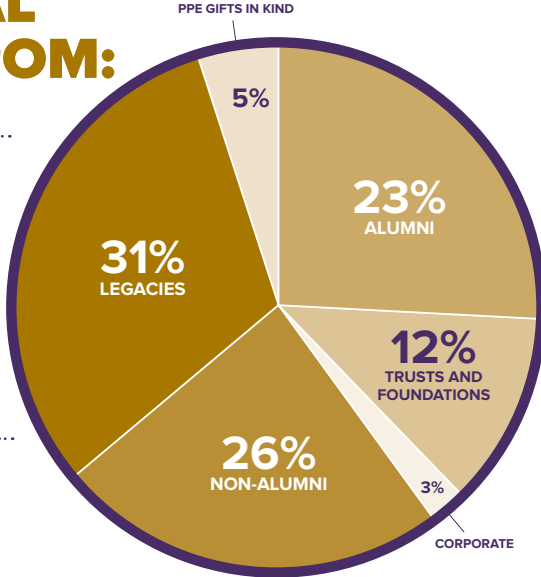


**£70,040**  
RAISED BY DONORS IN  
HONG KONG AND CHINA



## AMOUNTS AND % OF TOTAL RAISED FROM:

- LEGACIES - £909,848
- NON-ALUMNI - £750,624
- ALUMNI - £681,099
- TRUSTS AND FOUNDATIONS - £342,941
- PPE GIFTS IN KIND - £158,640
- CORPORATE - £93,500





# The Alumni and Friends Fund

## AREAS OF GREATEST NEED 2019-20

**£5,000**

for the ACE\*  
Photogrammetry  
student team

**£4,000**

for the ICRA\*\*  
RoboMaster  
AI Challenge

**£2,400**

for the  
Postgraduate  
Bioethics Conference

**£1,000**

to the  
Canoe Club

**£4,500**

for the  
Judo Club

**£3,000**

to the  
Surf Club

**£1,500**

to Boat Club  
Men's Squad

**£700**

for the International  
Veterinary Student  
Association's Exchange

\*Archaeology, Classics & Egyptology and \*\*International Conference on Robotics & Automation



“  
Thank you to all the supporters of  
the Alumni and Friends Fund!  
Your generosity greatly enhances  
and improves the societies and sports  
within the University, and allows us to  
develop the society further and achieve  
our full potential. Your kind donation  
will greatly improve the performance  
and capability of the current and  
future LUBC men's squad.  
”

Sean Young, President 2019-20, Liverpool University Boat Club



# Supporting student aspirations

The University is committed to widening access to higher education and your donations are supporting students to realise their academic ambitions.

## Undergraduate Scholarships

The programme gives talented undergraduate students in need of financial support the opportunity to realise their potential.

Since it was established in 2014, a total of £613,397 has been raised from more than 700 donors, and has eased the financial constraints for more than 800 students.



Jess Roe (BVSc 2020) UG Scholar

## The Sir Joseph Rotblat Alumni Scholarships

Named after former University lecturer and Nobel Peace Prize winner Sir Joseph Rotblat (PhD 1950, Hon DSc 1989), the Scholarship provides financial support for exceptional graduates of the University to study at postgraduate level. The award is funded by generous donations from alumni and friends of the University.



*The Undergraduate Scholarship has helped to reduce some of the pressure when it comes to job searching at a time when the veterinary industry has been impacted by the COVID-19 pandemic.*

*The ULGAHK scholarship helps me continue my studies and creates a safe space to allow me to focus on my research.*



Xinxin Cao (BA Hons Environment & Planning 2015, MSc Environment Assessment & Management 2016), current PhD student in Environmental Sciences and ULGAHK Scholar

## John Lennon Memorial Scholarships

Established in 1991 by Dr Yoko Ono Lennon (Hon LLD 2001) in memory of John Ono Lennon, the scholarships support students from Merseyside who are in financial need and who, as part of their studies, aim to raise awareness of global and environmental issues.



Jaimie Platt (BSc Hons Physics 2015, MSc Radiometrics Instrumentation & Modelling 2016), current PhD student in Nuclear Physics and John Lennon Memorial Scholar

## University of Liverpool Graduate Association Hong Kong Scholarships

Every year a number of academically outstanding undergraduate and postgraduate students from Hong Kong or China are awarded a University of Liverpool Graduate Association Hong Kong scholarship.

The scholarships were established in 1997 by the University's largest and most active alumni association to promote educational exchange and academic research between the University of Liverpool and residents of Hong Kong.

*I will hopefully be able to submit my thesis in a few months and gain a doctorate, something no one in my family has. On a personal level, the scholarship has allowed me to have this achievement.*

### Duncan Norman Scholarships

Adjoa Osei is a PhD student and recipient of the prestigious Duncan Norman Research Scholarship, established in 2004 to enable academically gifted students with leadership qualities the opportunity to pursue postgraduate study.

The Duncan Norman Charitable Trust was established in memory of Mr Norman who first joined the University's Council in 1942, beginning a tenure that was to span 21 years.

Adjoa's research is entitled "A Brazilian Soprano in Paris and New York – A Case Study of Elsie Houston from 1920 to 1945."



Adjoa Osei, PhD student,  
Duncan Norman Scholar

“  
*This scholarship  
has afforded me  
the opportunity to  
conduct intellectually  
exciting research  
in Washington DC,  
New York, Rio de  
Janeiro, and São  
Paulo; moreover,  
it has enriched me  
personally, providing  
me with new cultural  
perspectives.*  
”

### Newhall Entrepreneurship Research Impact Award

Awarded to Dr Virva Salmivaara, Post Doctoral Researcher at Aalto University and the University of Oxford, this annual award encourages methodologically rigorous and societally beneficial entrepreneurship studies.

Donated by the Chairman of Newhall Publishing, Dr Andrew Douglas (BA Hons Economic History 1982, PhD 1993, MPhil 2000), the award is given by the University of Liverpool Management School's Centre for Entrepreneurship.

Dr Virva Salmivaara is pictured receiving the award for her research titled: 'Rhetoric mix' of argumentations: How policy rhetoric conveys meaning of entrepreneurship for sustainable development. *Entrepreneurship Theory and Practice.*



### The Fang-Saxby Scholarships

The Scholarships were established by the Fang and Saxby families with the support of a number of former tutees of Emeritus Professor Michael Fang (Hon LLD 2016) (pictured left).



The scholarships have supported UK and EU undergraduate students in their second year to study at Xi'an Jiaotong-Liverpool University (XJTLU) in Suzhou, China, with the objective of promoting educational and cultural exchange.

### The Rushworth Scholarships

Sponsored by Dr Jonathan Rushworth (LLB Hons 1970, Hon LLD 2018), the Rushworth Scholarships, established in 2017, are awarded to talented and high-attaining students from the North West region who wish to study for an MA in Classical Music Industry.

The Rushworth family's generosity to the University is long-standing; as well as supporting postgraduate studies, this year the family supported the University's COVID-19 Emergency Response campaign, and have marked the family's musical legacy by naming the Rushworth Conductor's Room housed within the Yoko Ono Lennon Centre.

### The Hodgson Trust Scholarships

These international scholarships support high calibre LLM and postgraduate Law students from across the world to study at Liverpool. Through these scholarships long term links have been established between Law scholars from countries such as Brazil, Zimbabwe, Ukraine and Malaysia and the Liverpool City Region.



“  
*The Hodgson scholarship  
gave me the opportunity  
to pursue my PhD  
research at an amazing  
law school, here at the  
University of Liverpool.*  
”

Darryn Nyatanga (BA Hons Politics with Law 2017, LLM 2018),  
current PhD student and Hodgson Scholar



#### Dr Peter G Milner Fellowship for Biomedical Innovation

The fellowship is funded by alumnus Dr Peter Milner (BSc Hons 1978, MBChB 1980), and supports junior doctors in a three month placement in the USA with biotechnology and biomedical businesses.

“  
The fellowship  
was a truly unique  
experience, both in  
terms of observing  
the inner workings  
of biotechnology  
start-ups and  
understanding  
the culture of the  
Silicon Valley  
entrepreneurial  
lifestyle.  
”

Dr Jing Ouyang,  
Foundation Doctor at Aintree  
University Hospital, Dr Milner  
Fellowship recipient

#### E J Jones Prize

Established in 2019 by benefactor Celia Jones in memory of her father, this annual prize is awarded to a team from the Capstone Project Group, a programme for MEng mechanical engineering students who are given the challenge to design, build and test a project that replicates as closely as possible professional engineering practice.

E J Jones (pictured above) graduated from Liverpool in 1941 in Mechanical Engineering. He served in the Royal Electrical & Mechanical Engineers from 1943-1947, and worked at ICI in Runcorn, until his retirement in 1981.

Team Agila, E J Jones Prize winners 2019 with Celia Jones: Team Agila produced a remote-controlled aircraft and competed in the British Model Flying Association (BFMA) competition.



#### The Norton-Walford Prize

Dr Matt Smallbones (MBChB 2016) is a recipient of the Norton-Walford Prize, established by Dr Diana Walford CBE (BSc Hons Physiology 1965, MBChB 1968, MD 1976), former principal of Mansfield College, University of Oxford. The prize aims to encourage the study of Physiology as an intercalated BSc within the MBChB degree and is awarded for the highest exam marks for an intercalating student in Physiology.

“  
The Norton-Walford Prize has  
been a great boost for both my  
career and personal confidence.  
It is responsible for helping me  
get into the surgical training  
post I will be starting next  
month.  
”

Dr Matt Smallbones (MBChB 2016),  
Norton-Walford Prize recipient



#### Eva & Herbert Austin Travel Bursary

Established by benefactor Ronnie Austin (LLB Hons 1967) in memory of his parents, the Bursary provides career enhancing travel for early career researchers working at the Centre for Drug Safety Science.

This year, instead of travel, it has supported researchers to continue their studies during the COVID-19 pandemic.

“  
Receiving this  
award means  
everything to me,  
particularly now.  
While it would have  
been great to use  
it for research  
travel, this  
award will  
enable successful  
completion of  
my thesis at a  
time when I am  
personally  
faced with financial  
difficulties due to  
the COVID-19  
pandemic.  
”

Audrey Hamachila,  
PhD student, Eva & Herbert Austin  
Travel Bursary recipient



# The Yoko Ono Lennon Centre

“  
*I am thrilled to be recognised  
with the naming of the new  
performance centre at the  
University of Liverpool.*

*Thank you to the University  
and to the people of Liverpool  
for this wonderful honour.*  
”

Dr Yoko Ono Lennon, Hon LLD 2001

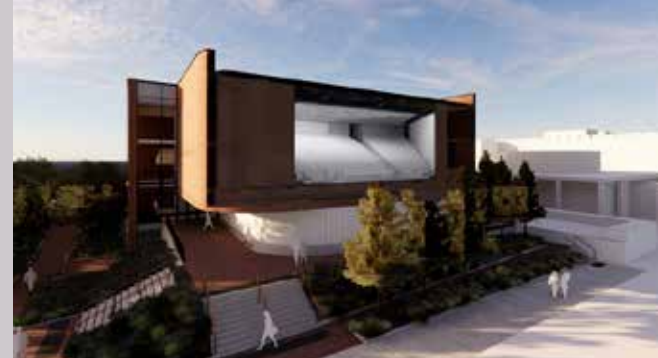
The University of Liverpool recently announced its new teaching and performance centre, opening in late 2021, will be named the Yoko Ono Lennon Centre in recognition of Yoko's long-standing philanthropic support of the University, particularly in the area of student scholarships (see page 7).

Earlier this year, Dr Yoko Ono Lennon joined a list of distinguished individuals as one of the Centre's campaign ambassadors; among them award-winning actor Dame Patricia Routledge DBE (BA Hons English Language & Literature 1951, Hon LittD 1999); the first British woman appointed a Professor of Surgery Averil Mansfield CBE (MBChB 1960, ChM 1973, Hon MD 1994); soprano Dr Joan Rodgers CBE (BA Hons Russian 1978, Hon DMus 2005); composer Professor Shirley Thompson OBE (BA Hons Music 1979); the former Head of Liverpool University Press Robin Bloxidge (BA Hons Geography 1969) and retired barrister and arts patron Nick Riddle.



The University has invested £22.1m in the project and to date has raised £2.1m in donations against a £3m target. These include transformational gifts from the Tung Foundation after whom the Tung Auditorium is named and from alumnus Dr Paul Brett (BA Hons Geography 1965, Hon LLD 2017) after whom the Paul Brett Lecture Theatre, the largest purpose-built lecture theatre on campus, will be named. Further generous gifts have been received from the estate of Fanchon Frohlich, the Rushworth Family and from campaign ambassadors Professor Averil Mansfield and The Patricia Routledge Charitable Trust, with £900,000 still to raise.

The Yoko Ono Lennon Centre will cater for more than 1,000 students across multiple disciplines, providing seminar facilities, informal study spaces and a dedicated performance space enabling students to get involved in all aspects of the arts business, as well as gaining invaluable work experience to complement their academic studies.



Architects' impression of the internal view of the Paul Brett Lecture Theatre

The University is honoured to add the iconic name of Yoko Ono Lennon to its new state-of-the-art building in which talented musicians and performers of the future will be nurtured.

To find out more visit: [liverpool.ac.uk/yoko](https://liverpool.ac.uk/yoko)

“  
*The Yoko Ono Lennon Centre  
will provide exciting new  
opportunities for students and  
complement Liverpool's existing  
musical infrastructure.*  
”

Professor Catherine Tackley, Head of the Department of Music



# Take a seat in the Tung Auditorium

The University's Name a Seat campaign was launched as part of our campaign to fund the new Yoko Ono Lennon Centre. To date, more than 100 supporters have chosen to leave their mark by naming a seat in the Tung Auditorium and, in doing so, raising over £25,000 to help us bring this new Centre to life in the city.

The Tung Auditorium located at the heart of the building will seat 400 people with space for a 70-piece orchestra. The Auditorium will offer students the opportunity to perform and to hear their compositions played professionally. It will also become home to the University's popular Lunchtime Concert Series and will provide the city with a high-quality, medium-sized venue suited to the performance of a diverse range of musical genres.

Visit: [liverpool.ac.uk/symphony/name-a-seat](http://liverpool.ac.uk/symphony/name-a-seat)



“  
*I just cannot imagine what life would be without music. And what would my life be without all the experiences and memories in Liverpool?*  
”

Xiaoxiao Hou, Music PhD student and donor



Celebrating the completion of the University's £300,000 fundraising campaign, staff and students from IntoUniversity North Liverpool with LFC's leading goal scorer, Ian Rush, and former CEO, Peter Moore.

## Celebrating IntoUniversity

The IntoUniversity North Liverpool Centre, a collaboration between educational charity IntoUniversity, the University of Liverpool and the LFC Foundation, has just celebrated its second successful year. As a result of your donations, more than 1,750 local children have been able to take advantage of the Centre's support services.

The Centre helps students in Anfield aged 7 to 18 aspire to do better at school and believe in their ability to get to university. In parts of North Liverpool where the Centre operates, the higher education progression rate is as low as 17.5%, less than half the national average (37%). As the Centre enters its third year of operation, 20 students who have completed the IntoUniversity programme have offers to study at the University of Liverpool in the forthcoming academic year.



Foundation

IntoUniversity

“  
*IntoUniversity is a great place for young students like me. The team at the Centre encourage us to do our best and give us all the help and support they can.*  
”

Precious, current IntoUniversity North Liverpool student, with alumna Lady Tetley, mentor and former IntoUniversity student



# COVID-19 Emergency Response Campaign

The University reacted quickly to the COVID-19 pandemic, launching a campaign within a week with three main priorities: to fund vital research, to support our students and to secure PPE.

**TO DATE THE CAMPAIGN  
HAS RAISED MORE THAN £500,000**

**HOW YOUR DONATIONS HAVE  
SUPPORTED THE CAMPAIGN**

**£246,094**  
TO FUND  
RESEARCH

**£162,000**  
STUDENT CRISIS  
SUPPORT  
FUND

**£158,640**  
PPE  
'GIFTS IN KIND'  
DONATIONS

The **Emergency Response Campaign** has helped fund ground-breaking research into coronavirus being undertaken at the University. Thanks to the generosity of donors, the Campaign has raised £246,094, including a gift of £29,000 from the Dowager Countess Eleanor Peel Trust for a new S5 Sequencer (pictured below), and a generous donation from Honorary Graduates Dr Heidi Thomas (BA Hons English Language & Literature 1983, Hon LittD 2019) and Dr Stephen McGann (Hon LittD 2019) whose donation helped launch the campaign.



Researcher Katie Bullock runs DNA samples through the Sequencer



University staff receiving PPE from China

The Liverpool Household COVID-19 Cohort Study, led by Professor Neil French is collecting data from approximately 300 households across the North West to better understand the behaviours that affect transmission rates. The study has been made possible by an anonymous £100,000 donation and a further £5,000 donation from the Pilkington Charities Fund.

## New COVID-19 studies

A further £100,000 has been allocated to fund nine new research projects. They include Professor Calum Semple, who is leading a study to help with pandemic preparedness and the scientific response to future pandemics; Professor Anne McArdle who will study chronic fatigue in COVID-19 patients; and Professor Cheng-Hock Toh, who is examining the relationship between COVID-19 and histones, a toxic protein found in blood clots.

**Read more about these projects and other research into COVID-19 here:**  
[liverpool.ac.uk/coronavirus/research-and-analysis](https://liverpool.ac.uk/coronavirus/research-and-analysis)

## PPE Donations are supporting frontline health-care workers and University researchers

In response to the University's request for donations of personal protective equipment (PPE), we received more than 210,000 items of PPE from more than 30 companies, groups and individuals around the world.

These include many of our friends in China and Hong Kong, our Nigerian Alumni Network and companies like Taylor Wessing LLP who in addition to a £2,500 donation provided acetate, which enabled University of Liverpool staff to produce more than 15,000 3-D printed protective visors for use by NHS staff across the city region.

In monetary terms, these 'gifts in kind' are worth an additional £158,640 to the campaign.

Thank you to our global community whose generosity and resourcefulness in supporting our COVID-19 Campaign has made all of this possible.

**To find out more about the Campaign visit:**  
[liverpool.ac.uk/coronavirus/support-us](https://liverpool.ac.uk/coronavirus/support-us)

The **Student Crisis Support Fund** is providing a lifeline for students facing financial difficulties as a result of COVID-19. The Fund has supported more than 70 students since its launch, with nearly one-third of applications from international students.

Ely Miyoshi Tamashiro Rizo is in the final year of her Marketing degree. Miyoshi's summer internship was withdrawn because of COVID-19 but thankfully, the £500 she was awarded from the Fund is helping her pay her rent.

The Fund was set up thanks to a generous £100,000 legacy gift, bequeathed by the late Mr & Dr Alston-Garnjost and £25,000 from Santander Universities UK. An additional £125,000 will be raised from donations.



**Dr Margaret Hope Alston-Garnjost**  
(BSc Hons Physics 1952, PhD 1955)  
(23 January 1929 – 7 February 2019)

Dr Margaret Hope Alston-Garnjost, was a physicist who earned her Doctorate in Physics at the University of Liverpool, in 1955.

Later moving to the University of California, Berkeley, USA, she co-authored several articles with Dr Luis Alvarez, who was awarded the Nobel Prize for Physics in 1968.



*“I feel part of a community who helps each other in times of crisis. I will forever be grateful for this act of kindness.”*

Ely Miyoshi Tamashiro Rizo, BA Hons Marketing student



Vice-Chancellor Professor Dame Janet Beer with Matt Hutnell, Director of Santander Universities UK

## In partnership with Santander

Since the long-standing partnership between the University of Liverpool and Santander Universities UK was established in 2012, many of our students have benefited directly from the transformational impact of Santander's support.

### COVID-19 Campaign

This year, existing funds from Santander were diverted to our COVID-19 Emergency Response Campaign to help fund the University's research into coronavirus. An additional donation of £25,000 to our Student Crisis Support Fund has enabled us to help more students facing financial hardship.

### New Programmes

A donation of £31,000 from Santander as part of their new Employ Autism Programme, will help increase young people's access to employment through a new work experience programme.

And a new Student Online Self-Development Programme which launches in 2021, will benefit 19 of our students. Students will have the opportunity to win a Santander Development Grant of £10,000 to support their professional and personal development.

### Enterprise Fund

Now in its second year, the Enterprise Fund supports student entrepreneurs to develop their business ideas by providing seed funding. Linda Donnelly started her eco-friendly skincare company, Divinely Inspired, thanks to funding from Santander.



*“Without this provision my business idea would not have gone forward so soon, or it may have been left like so many ideas to never materialise at all. The award really has changed my life for the better.”*

Linda Donnelly  
BSc Hons Psychology 2020



# Gifts from Trusts and Foundations

Gifts from Trusts and Foundations featured throughout this report are crucial in helping us achieve impact across a range of projects; from capital and research to teaching and scholarships.

## The Ulverscroft Fellowship

The Ulverscroft Fellowship at the Institute of Ageing and Chronic Disease, made possible by a gift of £155,000 from the Ulverscroft Foundation, will fund Dr Lucy Bosworth's research for the next three years into the restoration of vision for patients with glaucoma, a leading cause of sight loss.

## The Equine Isolation Unit

A new intensive care facility in the Philip Leverhulme Equine Hospital opens this year, made possible by a generous gift of £400,000 from Lord Leverhulme's Charitable Trust.



The Unit will create an isolation environment for horses aimed at preventing the spread of contagious disease and improving equine welfare, as well as upgrading facilities for staff and students.

## Improving Child Health in Bangalore

In Bangalore, India, The National Institute for Mental Health and Neuroscience is extending its Family Wellbeing Centre to accommodate the Child Health and Development Study collaboration with the University. A gift of £3,000 from the Eleanor Rathbone Charitable Trust will provide an air-conditioning unit in the Centre to make health assessments more comfortable.



Dr Prabha Chandra (centre), Professor of Psychiatry at NIMHANS.

## Research Grant Funding

We are grateful for the continued support of a number of large Trusts and Foundations which have made transformational contributions to the important research we carry out.

LEVERHULME  
TRUST



BILL & MELINDA  
GATES foundation

# Investing in health research

## Understanding Osteoarthritis

Osteoarthritis, the most common cause of disability in the UK, can affect any joint in the body but 1 in 5 adults have osteoarthritis of the knee.

The Geoffrey and Pauline Martin Trust is supporting a project led by Dr Brendan Geraghty and Professor Eithne Comerford in the Department of Musculoskeletal Biology to understand how knee ligaments alter with age in order to delay the onset of the disease.

## Research into pancreatic cancer

Despite major advances in the treatment of pancreatic cancer, 8,700 people still die from the disease each year in the UK.

A gift of £33,000 from alumnus James Miller (BEng Hons Electronics 1968) is enabling Dr Pedro Perez-Mancera and Professor Paula Ghaneh to identify markers found during the progression of pancreatic cancer that can predict which patients will benefit most from treatment.

## Alcohol-Related Brain Injury

Alcohol Concern estimates around 35% of the heaviest drinkers have some form of alcohol-related brain injury (ARBI). With sustained abstinence this condition can be reversed. Early recognition of ARBI is vital, therefore, to optimise medical and psychosocial care.

The Oglesby Charitable Trust has pledged a gift of £230,000 to the Liverpool Centre for Alcohol Research to develop a new early identification, support and rehabilitation programme for ARBI patients, with follow-up care in the community provided by specialist Occupational Therapists.

“Alcohol addiction and its devastating impact on people and their families, is an issue close to our hearts at the Oglesby Charitable Trust.

We are pleased to support the team as they trial a practical new approach for patients with Alcohol-Related Brain Injury.”

Jane Oglesby, Trustee,  
Oglesby Charitable Trust

## Gifts made by our non-alumni friends

### Researching motor neurone disease

Amyotrophic lateral sclerosis (ALS), also known as motor neurone disease or Lou Gehrig's disease, is a degenerative condition which causes the death of the neurons that control voluntary muscle movements such as chewing, walking, breathing and talking. There is no known cure for ALS and the average survival period from onset to death is just two to four years, with only 10% of patients surviving longer than 10 years.

Professor John Quinn, Chair of Neurobiology at the University of Liverpool, is undertaking ground-breaking research into ALS. The project, an international collaboration between researchers in the UK as well as Washington DC, Frankfurt and Tartu, is studying retrotransposons, or 'jumping genes', so-called because they jump from place to place and cause damage within DNA, including the brain.

The research has been made possible thanks to generous donations totalling £98,000 from the Andrzej Wlodarski Memorial Research Fund.

The Fund was set up by Brenda Wlodarski, a former medical researcher at the University of Liverpool, in memory of her husband Andrzej who passed away from the disease.



“

*That a fellow researcher has chosen our group as the sole recipient of the fund she established is a professional honour and a personal joy.*

*Importantly, this donation allows the group to explore new avenues to better attack diseases such as ALS in a timely manner.*

”

Professor John Quinn, Pain Research Institute, University of Liverpool

## Gifts from our US donors

Chapel & York Foundation Inc. is an independent, not-for-profit organisation which enables US alumni to retain their connection with the University and support its advancement.

### Complex Regional Pain Syndrome

Complex Regional Pain Syndrome (CRPS) is a post-traumatic pain condition which affects the limbs. Often difficult to diagnose, the prognosis for CRPS is poor and drug therapy for pain relief can be ineffective. Approximately 15 percent of patients with CRPS still have symptoms one year after onset that severely impact their quality of life.

Thanks to a transformational gift of £565,709 from the Edelman Family Foundation in New York, USA, a team of international researchers, led by Dr Andreas Goebel from the University's Pain Research Institute, is undertaking research to better understand the immunological causes for CRPS. Read more about the research here: [liverpool.ac.uk/pain-research-institute](http://liverpool.ac.uk/pain-research-institute)

The gift from the Edelman Family Foundation was made to the University via Chapel & York Foundation Inc., an independent, not-for-profit organisation which enables alumni and supporters in the US to support the University philanthropically.

Donations made to the Foundation are tax-exempt under Section 501 (c) (3) of the US Internal Revenue Code.

If you would like to make a donation to Chapel & York Foundation Inc. visit: [chapel-yorkfoundation.org/donate-university-of-liverpool](http://chapel-yorkfoundation.org/donate-university-of-liverpool) to donate online or download the donation form and email it to [giving@liverpool.ac.uk](mailto:giving@liverpool.ac.uk).

Alternatively, you can send it to: Chapel & York US Foundation, Inc., 155 E 44th Street, 6th Floor, Suite 34, New York, NY 10017

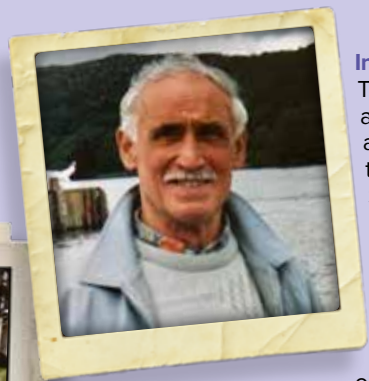


# Remembering friends and loved ones

## Joseph Brendon Collins

The School of Veterinary Science has received a £10,000 legacy gift from the estate of Joseph Brendon Collins to support its equine healthcare facilities. Mr Collins' love for horses began on the farm where he grew up, and stayed with him until his passing this year.

Remembered as a "true gentleman" by his niece, Mr Collins and his wife were devoted supporters of animal charities, and adopted a number of horses and donkeys, including Peanuts (*pictured with Mr Collins*).



## In memoriam

The Grady family are significantly affected by hereditary pancreatitis and, having taken part in research trials under the care of Dr Ioannis Sarantis, are advocates for the pioneering research contributed by the EUROPAC fund.

The family continues to support the Fund through donations made in memory of their loved ones, Frank (*pictured*), who they lost to the chronic condition in 1998 and John, who died in 2019, in the hope of helping improve treatment for future generations.

*(European Registry of Hereditary Pancreatitis and Familial Pancreatic Cancer)*

**Please consider the University when you are preparing your will.**

Legacy gifts benefit the University long into the future and are an important way to leave your mark on the institution. In 2019-20, almost a third of the University's philanthropic income was from legacies. Leaving a legacy is easy to arrange and could reduce the amount of tax payable on your estate.

**Inspired to find out more about legacy giving?**

**Visit:** [liverpool.ac.uk/giving/legacies/](https://liverpool.ac.uk/giving/legacies/)  
**or contact our Legacy Officer, Carolyn Jones via email:** [carolyn.jones@liverpool.ac.uk](mailto:carolyn.jones@liverpool.ac.uk).



## In memory of Pete Wildish

Pete Wildish (*pictured*) was 75 and eight days away from celebrating his 48th wedding anniversary when he sadly died of coronavirus in June this year. His daughter Alison Kerwin, Director of Marketing at the University, decided to fundraise in her Dad's memory to support the University's COVID-19 Campaign, having witnessed first-hand how colleagues had risen to the challenge of the pandemic.

**Read Alison's story here:** [liverpool.ac.uk/coronavirus/blog](https://liverpool.ac.uk/coronavirus/blog)

“  
*What better way to honour my dad and to support the incredible endeavours of my colleagues than to raise funds for our own COVID-19 Emergency Response Campaign.*  
”

Alison Kerwin, Director of Marketing, University of Liverpool





## Donations of time and expertise

In the last five years, over 2,800 volunteers have donated nearly 20,000 hours of their time.

This year a number of alumni returned to campus, either in person or virtually, to participate in networking breakfasts and speaker events such as the highly successful #InspiredFutures2020 careers event (pictured). Supporting student employability is just one of the positive ways in which our volunteers contribute to the University's strategic priorities and demonstrates the impact that volunteering has for the University.

Due to the pandemic, we've had to adapt the delivery of our volunteering programmes this year and in June launched a new online series, 'Bringing the World to Liverpool'. Nine events took place in the UK, China, India, Singapore, Malaysia, Nigeria, Europe and North America, with a number of our prominent international alumni providing sector, career and life insights for the countries in which they live or work. Over 600 students and graduates registered, demonstrating the global impact of our alumni.

### Alumni Associations

The University of Liverpool Veterinary Alumni Association (ULVAA) and Liverpool Law School Alumni Association (LLSAA) are volunteer-led associations that organise social events for alumni from those disciplines, as well as offering support to students through donations and by participating in guest lectures and events.

Holly Fitzgerald (BA Hons Marketing 2017) is a regular volunteer and has delivered many guest speaker sessions. She's also shared her insights with students about starting their own business and joined conversations about how the Management School's programmes can give students the skills most needed in the workplace.

To every one of our volunteers we'd like to say thank you, we hope you know how much your time and support means to us.

“  
Volunteering is something I continue to look forward to. It's fantastic to be able to give back to the place that has given me opportunities to get where I am in my career.  
”



Holly Fitzgerald,  
BA Hons Marketing graduate

### SNAPSHOT OF THE PAST 5 YEARS

**2,881**  
VOLUNTEERS

**1,683**  
MENTORS  
(INCLUDING  
LIVERPOOL CONNECT)

**37**  
PROFESSIONAL,  
ACADEMIC  
AND REGIONAL  
NETWORKS

**75**  
INTERNATIONAL  
VOLUNTEERS

**19,775**  
VOLUNTEER HOURS



# Please continue to help us make a difference

Thank you to all those who have supported us this year. Your support is invaluable, and will allow us to build a stronger and more sustainable future for the University of Liverpool and its students.

The University is committed to inspiring people to learn and achieve, enabling them to realise their ambitions. With your help we're able to provide opportunities for the most talented students to access a world-class education, regardless of background, and to nurture and inspire tomorrow's leaders and thinkers.

The University is helping to solve some of the biggest issues facing our global society and providing answers for a post-COVID-19 world. With your help, the discoveries of scientists and academics at the University will transform the way we live, both now and in the future.

Every one of our supporters has played a role in our University's future. Please consider helping us again; we really appreciate your gifts and hope this report has shown you the impact of your generosity. Thank you for your continued support.

**Giving to the University is rewarding and could help to change lives.**

To make a donation or to find out more about our fundraising priorities, please visit: [liverpool.ac.uk/giving/priorities/](https://liverpool.ac.uk/giving/priorities/) or email us: [giving@liverpool.ac.uk](mailto:giving@liverpool.ac.uk)



*Selection of images including Alumni Awards 2019, IntoUniversity North Liverpool Celebration March 2020, Fred Freeman Lecture 2019 and Santander Enterprise Awards 2019*

“

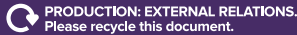
*What counts in life is not the mere fact that we have lived. It is what difference we have made to the lives of others that will determine the significance of the life we lead.*

”

Nelson Mandela (18 July 1918 – 5 December 2013),  
President of South Africa, Freeman of the City of Liverpool 1994



THE UNIVERSITY IS A MEMBER OF THE ELITE  
RUSSELL GROUP OF RESEARCH-LED UK UNIVERSITIES



@LivUniAlumni

